

Stock Selections & Timing

Watercourse Way Holdings, LLC

P.O. Box 830396
Richardson, TX 75083-0396
972-680-2366

August 2, 2010 (data through previous Friday's close)
Volume 1
Issue 14

Extension of Rally

I mentioned last week that the market discounted the bad news of a slowing economy and expiring fiscal stimulus programs by selling off between April and July. The economic news recently has still been poor, but now the market is rallying. So evidently, not only was the bad news discounted, but so was the possibility of a

double-dip recession.

The market's problem is that the economy is not in another recession, hence the market overshot the bad news to the downside and now has to correct its correction; it is now back in gear to the upside.

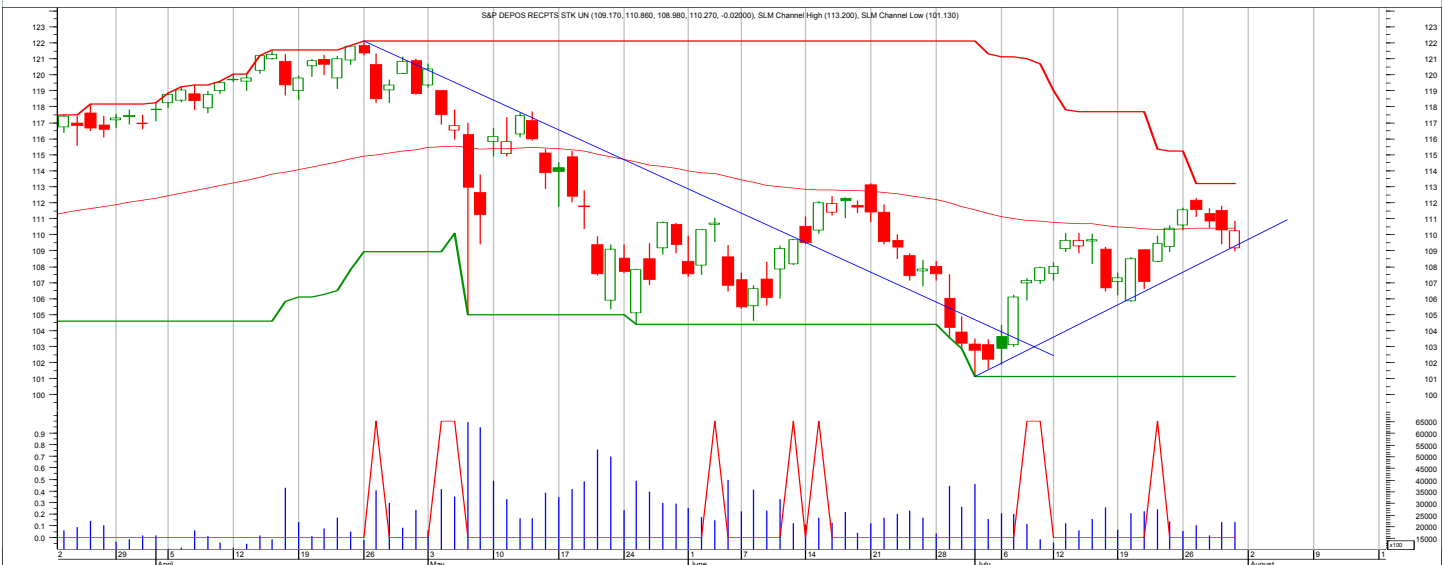
For example, the ISM manufacturing index number fell again for the third month,

but it is still at 55, which is above the 50 level that is the fulcrum point between expansion and contraction.

Likewise, the GDP report slowed from 3.7% in the first quarter to 2.4% in the second quarter. Slowing expansion, but the key word is expansion.

The leading economic indi-

(Continued on bottom left on page 4)



The chart is the daily S&P 500 with an 80-day moving average.

SCOREBOARD

Model	YTD	52-week	26-week	13-week	4-week	1-week
Stock Portfolio	4.1%		4.1%	1.0%	1.0%	2.0%
Dow30 Portfolio	0.1%		2.8%	-5.1%	6.8%	1.2%
Wilshire 5000	0.0%		3.1%	-7.4%	7.9%	0.9%
Dow Industrials	0.4%		4.0%	-4.9%	8.1%	0.4%

CONTENTS

Page 2.....	Portfolio
Page 3.....	Dow 30
Page 4.....	Featured
Page 5.....	Disclaimers

Stock Portfolio

ACTION FOR						PORTFOLIO DETAILS						Value as of date: 7/30/2010	
Action Dates	Action	Symbol	Action Price	# of Shares	Action Value	Symbol	Closing Stop	Description	Start Price	Ending Price	# of Shares	Current Value	Percent of Total
2/8-2/12	buy	TIII	1.28	7,813	10,000	TIII			1.28	1.62	7,813	12,657.06	12.2%
						DRAD			1.95	1.84	5,128	9,435.52	9.1%
2/22--	buy	DRAD	1.95	5,128	10,000	ECGI			0.98	1.10	10,204	11,224.40	10.8%
						GENC			7.82	7.63	1,278	9,751.14	9.4%
4/5 -	buy	ECGI	0.98	10,204	10,010	QCC			1.41	1.56	7,092	11,063.52	10.6%
						TAXI							
6/1 -	buy	GENC	7.82	1,278	10,004								
6/14 -	buy	QCC	1.41	7,092	10,010								
5-Aug	buy	TAXI	up to \$7.40		10,000								
						Money Market			1.00		50,000	50,000.00	48.0%
									Total Valuation=			104,131.64	100.0%

REVIEW since last issue

Each position is doing fairly well. The weakest is DRAD and the strongest is TIII. DRAD announced that their positive earnings would be pushed out another quarter or two, but it still has around \$1.62 net cash in the bank.

No changes for now.

Dow 30 Portfolio

ACTION FOR			PORTFOLIO DETAILS				Value as of date: 7/30/2010						
Action Date	Action	Symbol	Action Price	# of Shares	Action Value	Symbol	Closing Stop	Description	Start Price	Ending Price	# of Shares	Current Value	Percent of Total
3-May	sell	CVX	82.83	43	3,562	DIA			103.83	104.70	771.04	80,727.89	80.6%
3-May	buy	VZ	29.29	50	1,475								
3-May	buy	PFE	16.91	60	1,025	T			25.18	25.94	120	3,112.80	3.1%
3-May	buy	AA	13.15	231	3,048	VZ			28.70	29.06	155	4,504.30	4.5%
						PFE			17.86	15.00	227	3,405.00	3.4%
2-Aug	sell	T		120		AA			13.15	11.17	231	2,580.27	2.6%
2-Aug	sell	VZ		155		XOM			65.11	59.68	46	2,745.28	2.7%
2-Aug	buy	BAC		200									
2-Aug	buy	JNJ		50									
						Money Market			1.00		3,024	3,024.00	3.0%
									Total Valuation=		100,099.54	100.0%	

Company	Symbol
Alcoa	AA
American Express	AXP
Boeing	BA
Bank of America	BAC
Catepillar	CAT
Cisco	CSCO
Chevron	CVX
DuPont	DD
Disney	DIS
GE	GE
Home Depot	HD
Hewlett Packard	HPQ
IBM	IBM
Intel	INTC
Johnson & Johnson	JNJ

Company	Symbol
JP Morgan	JPM
Kraft	KFT
Coca-Cola	KO
McDonalds	MCD
3M Company	MMM
Merck	MRK
Microsoft	MSFT
Pfizer	PFE
Proctor & Gamble	PG
ATT	T
Travelers	TRV
United Technologies	UTX
Verizon	VZ
Wal-Mart	WMT
Exxon Mobil	XOM

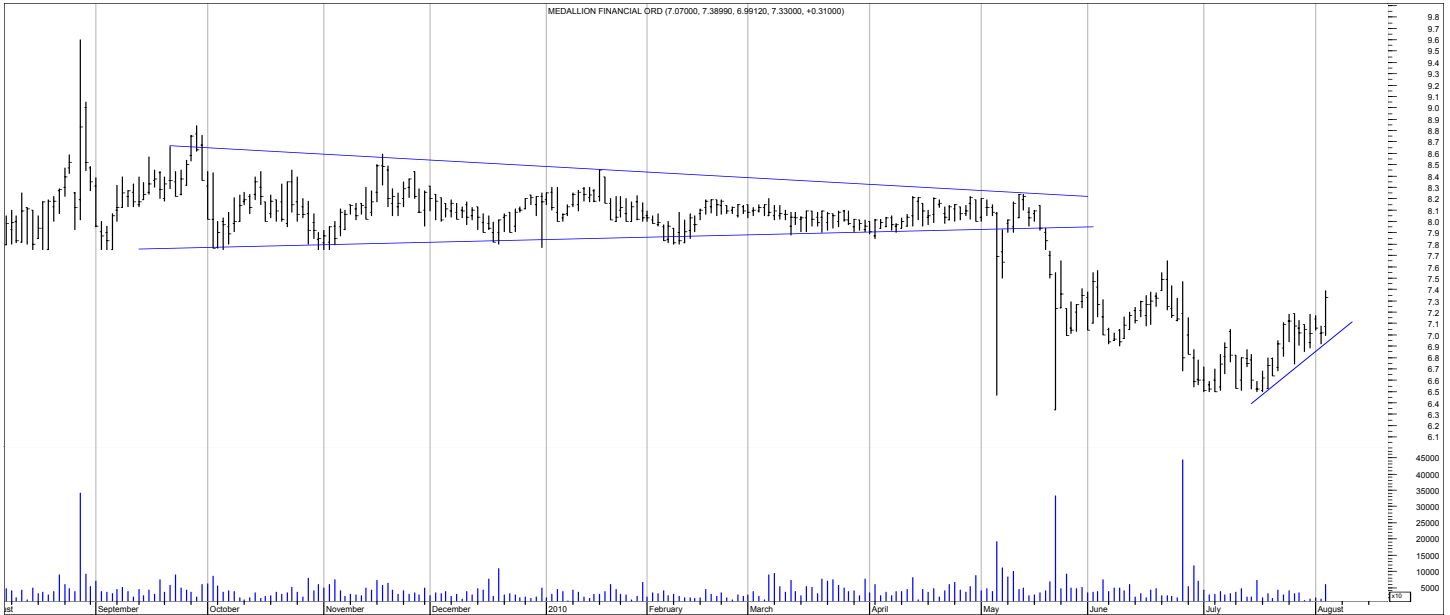
For this portfolio, we seek to outperform the Dow Industrials using proprietary timing and weighting formulas of the underlying thirty stocks of the Dow Industrials. We also will use the ETF that tracks the same. The symbol is DIA.

We monitor the underlying individual stocks for buys and sells in order to overweight the portfolio to what is expected to outperform and underweight the portfolio with what is expected to underperform.

REVIEW since last issue

As noted above, I'm selling two positions that have rallied back to their apparent tops and am buying two new positions that are trading nearer their lows.

Feature Company



As mentioned two weeks ago—

Working on a large-cap dividend strategy. When completed, I will post it.

The Feature Company is from the large-cap dividend strategy. It is Medallion Financial (TAXI). They finance taxi-cab

loans for the New York, Chicago, and other markets.

To drive a cab, you must own a medallion. The ones in New York are trading at about \$800,000. They are all regulated and scarce.

The company finances the pur-

chase. Delinquent loans 90 days or more past due were 1.5% down from 2.2% a year ago. It is a strong business.

The company has a tangible book value of \$9.16 per share. The stock price is about \$7.20, providing a yield of 8.33%. Buy up to \$7.40.

(Continued from page 1)

cators have moved lower in their latest reporting period on July 22 for June. But one month does not make a trend. It is still up over the last three months and longer.

So, I expect the market to continue its climb to recovery highs. It is this recovery, however, in which some negative divergences form. The economy is slowing, I don't expect it to stop, but if it does, the market will turn

down again. If the economy doesn't stop, then things should remain in gear to the upside. Close monitoring will be very necessary in the months ahead.

Descriptions & Disclosures

PORTFOLIO DESCRIPTIONS (pages 2 and 3)

Our guiding goal is to provide the most return with the least risk.

The portfolios were started on 1/1/10 with \$100,000.

Portfolio changes will usually be made either at the close on Monday (the day this eNewsletter is posted), unless otherwise noted.

Portfolios are updated through the preceding Friday's close.

Dividends are paid in cash. Interest is zero for the money market (cash) position.

SUBSCRIPTIONS: To receive *Stock Selections & Timing*, you may subscribe in one of three ways. You may subscribe on the web site InvestmentST.com using PayPal or call 1-800-800-6563 for Visa or MasterCard orders or send a check to the address on the front page. Subscriptions may be tax deductible.

The recurring monthly subscription is \$49.00. An annual subscription is \$395.00. Subscribers receive this weekly eNewsletter. There is no mailed issue. Subscribers retrieve the current issue at the web site InvestmentST.com by logging in using a log in name and password. There may be emailed hotline reports between issues.

Unless otherwise noted, the weekly eNewsletter is posted by 2:30 PM central time every other Monday, except for holidays and then on Tuesday. It may contain actionable, specific buy or sell advice to take that day or during the week. Symbols, rather than names, are the official identification used for activity.

GUARANTEE: Subscriptions may be cancelled at any time. Annual subscriptions are refundable for the weekly term remaining with a four-week minimum charge, using a 52-week count. A monthly subscription just expires.

PUBLISHER: Watercourse Way Holdings, LLC publishes this newsletter.

REPRINTS: This eNewsletter is intended for subscribers only, reprints are not permitted.

DISCLAIMER: The information contained herein is assembled from sources who are believed reliable, but the accuracy of data or advice cannot be guaranteed. Past performance does not guarantee future performance. Portfolio values include a commission of \$10/trade, dividends in cash. The Wilshire 5000 is a broad based equity index and may or may not be useful in comparing returns. Security values fluctuate. Information is provided without consideration for your personal situation. Watercourse Way Holdings, LLC its members and associates may or may not invest identically to or at the same time as portfolios or advice shown herein. They may or may not own company shares mentioned herein and may or may not buy and sell at any time.

COPYRIGHT: Copyright, 2010, Watercourse Way Holdings, LLC. All rights reserved.