



No-Load Mutual Fund Selections & Timing Newsletter

Striving to provide you with the most return and the least risk.

Date: May, 2013 (pricing data through 4/30/13)

Publisher: Watercourse Way Holdings, LLC

Volume: 31 Number: 5

InvestmentST.com

Editor: Stephen L. McKee

Top 5% Funds By C (comet)

C measures the risk adjusted (V) relative performance between a fund and market (CS). Top 5% funds are sorted by asset class (first letter in style) E-equity, H-hybrid, or B-bond, listed alphabetically, and grouped by fives.

Fund	Symbol	Style	C
Amana Incm	AMANX	EV	28.5
Baron Partners	BPTRX	EMC	29.4
Bridgeway Large Val	BRLVX	ELC	29.3
Bridgeway Small Val	BRSVX	ESC	28.7
iShares DJ Sltc Div	DVY	EGI	30.5
iShares Russel MidVal	IWS	EV	28.8
PS High Yield Eqty	PEY	EMC	32.9
Select SPDR Cnsmr Stpl	XLP	EA	28.4
Select SPDR Dividend	SDY	EGI	33.6
Select SPDR Health	XLV	EA	32.3
FAM Equity Income	FAMEX	EGI	28.3
Fidelity Japan	FJPNX	EWR	28.9
Fidelity Pacific Basin	FPBFX	EWR	29.8
Fidelity Value Strategies	FSLSX	EV	28.4
Hennessey Focus	HFCSX	EMC	30.2
Icon Health	ICHCX	EA	28.6
Janus Gbl Life Science	JAGLX	EWR	28.8
Kinetics SmCap Opp	KSCOX	ESC	32.2
Legg Mason Opp	LMOPX	EMC	29.2
Matthew's Asia Dividend	MAPIX	EW	28.7
Matthew's Asia Grth	MPACX	EW	29.4
Matthew's Japan	MJFOX	EW	37.1
Nicholas Equity Income	NSEX	EGI	29.9
RBB Lng/Shrt Eqty	BPlex	EC	31.9
Price Japan	PRJPX	EWR	32.2
Vanguard PRIMECAP	VPMCX	ELC	28.9
Weitz Partners Val	WPVLX	EV	29.5
Berwyn Income	BERIX	HGI	28.4
Vanguard Wellesley Incm	VWINX	HB	29.8
Villere Balanced	VILLX	HB	27.9
Artio Gbl Hlncm	BJBFX	BW	29.6
Homestead Shrt Bond	HOSBX	BS	29.9
Managers Bond	MGFX	BF	30.1
Payden Gbl Flncm	PYGFX	BW	29.5
Permanent Versatile Bond	PRVBX	BF	47.2
Pimco Income	PONDY	BF	31.2
SSgA Intrmtd Fl	SSINX	BI	30.1
Weitz Shr Intrmtd Incm	WEFIX	BS	31.2

Luck and Skill

Working in the investment market, whether in stocks, bonds, or commodities, it has to be one of the most humbling jobs there is. And if you don't humble yourself, you can be sure the market will do it for you shortly.

So, it was with interest I read about the Bond King, Bill Gross of PIMCO, who asked last month about whether or not he was a good investor. Eh, what? The same guy with billions under management with a great track record built over 30 years? Was his career coming to an end and it was time for some self-reflection or what gives? The Stock King, or more accurately the Oracle of Omaha, Warren Buffett also conducts this self appraisal, looking at his successes and his failures in his annual letter to shareholders.

Gross's question was whether or not he was good because he really was good at what he did or whether he was good because of the times, the epoch, in which he invested. To his point, we have been in a 30-year bull market in bonds (see recent Special Report). Was he good or was it falling interest rates and therefore the rising bond prices by default that made him good?

To his credit, he is publicly asking the question. This by itself suggests a certain humbleness. To seriously ask the question, whether you're good or lucky, is to humble yourself; it really is what every man-

ager must and should do regularly. History is littered with so-called great managers who did well for awhile, but who basically failed to keep asking the question over their careers.

When the market is rising, it is the easiest thing to do, to confuse your brains with the bull market. Has your fund or ETF been making money the past year? Is it because of smarts, because of being good at the job, or is it simply the rising market?

The rising tide lifts all boats; when it goes out, we see who was swimming naked (Buffett). Mark Hulbert has suggested it takes some 15 years before one is able to separate the lucky manager from the skillful manager. 15 years that will include many cyclical bull and bear markets and may include the start and end of secular ones. And even then, it is still possible to play the fool who yet turns and says yep, 15 years and I am invincible at what I do.

Stay humble, my friends.

TABLE OF CONTENTS

Top 5% of NLMFS&T	Page 1
Fund Data (highest ranked)	Pages 2-4
MAAP Income	Page 5
MAAP Growth and Balanced	Page 6
Timing & Allocation	Page 7
Scoreboard	Page 8
All Funds (on-line only)	Pages 9-26



AROUND THE CAMPFIRE

I will be in Las Vegas at The MoneyShow May 13-16. I'll be giving two workshops on picking the top mutual funds and ETFs.

I plan also to be at their next show in San Francisco August 15-17.

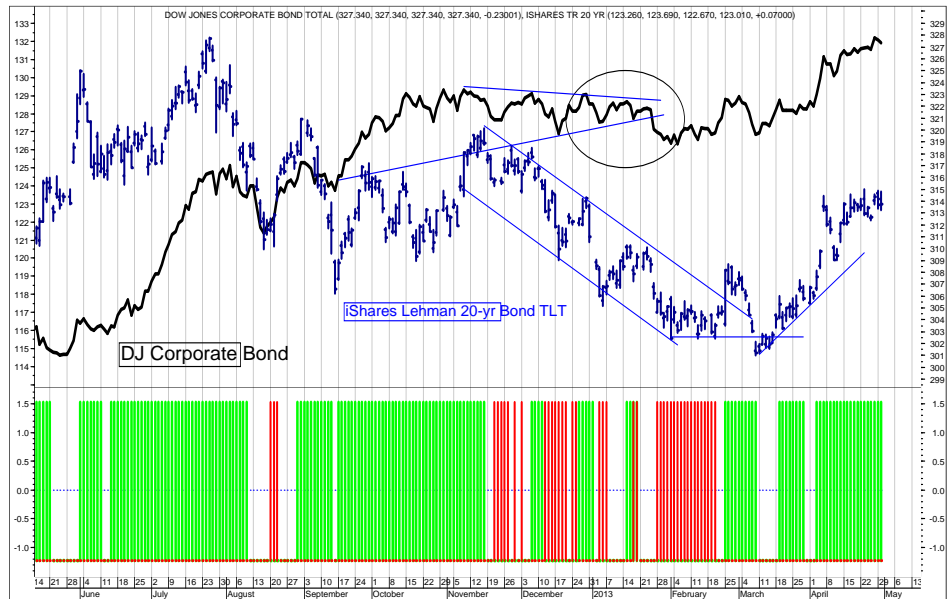
Hope to meet you at either one.

Interest Rates and Bond Prices

Within a week of my Special Report on the secular bull market in bonds (posted to InvestmentST.com) that mentioned one indicator to monitor, the Treasury announced it would repay some \$35 billion of debt in Q2. This was in contrast to an expected borrowing of \$103 billion. The Fiscal Cliff (raise taxes) and Sequestration (cut spending) have had one of their intended effects, which was to pay down debt.

While one quarter doesn't make a trend, and while one quarter is not akin to the meaning of secular (5-30 years), it does remind us that every trend will eventually end. The secular bond bull market has lasted 30 years. If Federal debt as a percentage of GDP begins to consistently decline, then interest rates may reverse course.

In the meantime, I remain generally bullish on bonds.



The SLM Bond Market Timing Model shown on bottom part of chart above is an intermediate-term (weeks to months) forecasting tool of the direction of bond prices and yields, which move inversely. If you see this as a PDF file off the internet, the green bars are buy/hold, the red bars are sell/avoid signals. White spaces indicate that the previous signal is still in effect. If you see this as a printed version, sell signals are darker, buy signals are lighter. The model is based on the corporate bond market, not governments or high-yield.

MAAP: Income

There were no changes last month. The Fed is still committed to buying \$85 billion of bonds per month. The European Central Bank and Bank of Japan are also attempting to force rates lower. These things may contribute to the end game.

MONTHLY ACTIVITY

MONTH ENDING: 4/30/2013

MONTH END VALUATIONS

INCOME, selected & timed, style and asset allocated (bond, hybrid, cash)

Activity Date	Activity	Fund	Action Price	Number of Shares	Action Value	Symbol	Fund Style	Fund	Ending NAV	Number of Shares	Current Value	Percent of Total
14-Mar	sell	LQD	14.65	238.5880	27,344	POND	Bond Flex	PIMCO Incm	12.74	16917431	21,553	9%
14-Mar	sell	TLH	126.91	150.0000	19,027	DLTN	Bond Flex	DoubleLn Trl Rtrn	11.41	2,308.9619	26,345	11%
9-Aug	buy	DLTN	11.30	2,212.3894	25,000	FBND	Bond Intrmd	Fidelity Inv Grd Bond	8.03	3,258.9673	26,170	11%
14-Sep	sell	PLW	32.21	785.3589	25,286	MBB	Bond US	iShares MBS	108.33	374.8942	40,612	17%
14-Sep	sell	TLH	132.98	244.6004	32,517							
14-Sep	buy	POND	12.16	1,644.7368	20,000							
14-Sep	buy	MBB	109.05	366.8042	40,000							
22-Feb	sell	BGNM	11.07	2,292.0490	25,373							
						Cash	Money Market		1.00	127,347.0000	127,347	53%
						Total Valuation=					242,027	100%

MAAP: Aggressive Growth, Growth, and Balanced

PREVIOUS ACTIVITY			TO MONTH ENDING: 4/30/2013			MONTH END VALUATIONS						
AGGRESSIVE GROWTH, selected & timed, style allocated (equity, hybrid, cash)												
Activity Date	Activity	Fund	Action Price	Number of Shares	Action Value	Symbol	Style	Name	Ending NAV	Number of Shares	Current Value	Percent of Total
9-Jan	sell	HEIFX	14.23	2,011.8152	28,628	BUFBX	Hybrid	Buffalo Flex Incm	13.70	3,999.3071	54,791	10%
9-Jan	sell	MOBAX	21.93	2,300.4695	50,449	VILLX	Hybrid	Villere Blncd	22.72	2,302.0258	52,302	10%
9-Jan	sell	WVALX	35.00	616.2340	21,568							
9-Jan	buy	VILLX	21.72	2,302.0258	50,000	DVY	Eqty Gl	iShares DJ Slct Div	65.47	913.0300	59,776	11%
9-Jan	buy	WEHIX	47.12	530.5603	25,000	SDY	Eqty Gl	Select SPDR Div	67.25	396.9200	26,693	5%
9-Jan	buy	OAKIX	21.39	1,168.7705	25,000	IWS	Eqty V	iShares Rus MidVal	57.75	554.0900	31,999	6%
22-Feb	sell	DLN	56.86	361.5400	20,557	WEHIX	Eqty SC	Weitz Hickory	50.10	530.5603	26,581	5%
22-Feb	buy	SDY	63.27	396.0000	25,055							
22-Feb	sell	DHS	49.07	455.5700	22,355	OAKIX	Eqty W	Oakmark Intrntl	23.30	1,168.7705	27,232	5%
22-Feb	buy	IWS	54.89	552.0000	30,299	ARTGX	Eqty W	Artisan Gbl Value	13.37	1,965.4088	26,278	5%
22-Feb	buy	ARTGX	12.72	1,965.4088	25,000							
						Cash	Money Market		100	216,615.0000	216,615	41%
Total Valuation=											522,266	100%

GROWTH, selected & timed, style & asset allocated (equity, hybrid, cash)												
Activity Date	Activity	Fund	Action Price	Number of Shares	Action Value	Symbol	Fund Style	Fund	Ending NAV	Number of Shares	Current Value	Percent of Total
9-Jan	sell	HEIFX	14.23	3,379.8847	48,096	BUFBX	Hybrid	Buffalo Flex Incm	13.70	6,798.7500	93,143	10%
9-Jan	sell	MOBAX	21.93	4,084.5070	89,573	VILLX	Hybrid	Villere Blncd	22.72	3,683.2413	83,683	9%
9-Jan	sell	WVALX	35.00	1,078.4045	37,744							
9-Jan	buy	VILLX	21.72	3,683.2413	80,000	DVY	Eqty Gl	iShares DJ Slct Div	65.47	1,621.2900	106,146	12%
9-Jan	buy	WEHIX	47.12	848.8964	40,000	SDY	Eqty Gl	Select SPDR Div	67.25	698.6200	46,982	5%
9-Jan	buy	OAKIX	21.39	1,870.0327	40,000	IWS	Eqty V	iShares Rus MidVal	57.75	804.9300	46,485	5%
22-Feb	sell	DLN	56.86	611.8800	34,791	WEHIX	Eqty SC	Weitz Hickory	50.10	848.8964	42,530	5%
22-Feb	buy	SDY	63.27	697.0000	44,099							
22-Feb	sell	DHS	49.07	755.6000	37,077	OAKIX	Eqty W	Oakmark Intrntl	23.30	1,870.0327	43,572	5%
22-Feb	buy	IWS	54.89	802.0000	44,022	ARTGX	Eqty W	Artisan Gbl Value	13.37	3,144.6541	42,044	5%
22-Feb	buy	ARTGX	12.72	3,144.6541	40,000							
						Cash	Money Market		100	401,278.0000	401,278	44%
Total Valuation=											905,862	100%

BALANCED, selected & timed, style & asset allocated (equity, hybrid, bond, cash)												
Activity Date	Activity	Fund	Action Price	Number of Shares	Action Value	Symbol	Fund Style	Fund	Ending NAV	Number of Shares	Current Value	Percent of Total
9-Jan	sell	HEIFX	14.23	2,897.0454	41,225	BUFBX	Hybrid	Buffalo Flex Incm	13.70	4,573.7667	62,661	8%
9-Jan	sell	MOBAX	21.93	3,239.4366	71,041	VILLX	Hybrid	Villere Blncd	22.72	3,222.8361	73,223	10%
9-Jan	sell	WVALX	35.00	924.3510	32,352							
9-Jan	buy	VILLX	21.72	3,222.8361	70,000	DVY	Eqty Gl	iShares DJ Slct Div	65.47	1,285.6300	84,170	11%
9-Jan	buy	WEHIX	47.12	742.7844	35,000	SDY	Eqty Gl	Select SPDR Div	67.25	583.4100	39,234	5%
9-Jan	buy	OAKIX	21.39	1,636.2786	35,000	IWS	Eqty V	iShares Rus MidVal	57.75	671.0000	38,750	5%
22-Feb	sell	DLN	56.86	560.8800	31,892	WEHIX	Eqty SC	Weitz Hickory	50.10	742.7844	37,213	5%
22-Feb	buy	SDY	63.27	582.0000	36,823							
22-Feb	sell	DHS	49.07	652.8430	32,035	OAKIX	Eqty W	Oakmark Intrntl	23.30	1,636.2786	38,125	5%
22-Feb	buy	IWS	54.89	671.0000	36,831	ARTGX	Eqty W	Artisan Gbl Value	13.37	2,751.5723	36,789	5%
22-Feb	buy	ARTGX	12.72	2,751.5723	35,000	DLTNX	Bond Flex	DoubleLn Ttl Rtrn	11.41	4,599.2988	52,478	7%
22-Feb	sell	BGNMX	11.07	4,584.7880	50,754							
						Cash	Money Market		100	303,536.0000	303,536	40%
Total Valuation=											766,180	100%

PORTFOLIO CHANGES: No changes last month.

WHAT TO DO NOW: OAKIX has jumped nicely in the last month, but overall continues to lag and remains in the 3 comet group. It is now past its short-term holding period in order to avoid a short-term redemption charge, and thus it is available to evolve out of this month. Watch for an emailed Hotline.

All of the other positions remain in the top 20% (5 and 4 comets).

Market Timing and Asset Allocation

XAU (gold/silver index), GLD etf, and Ratio

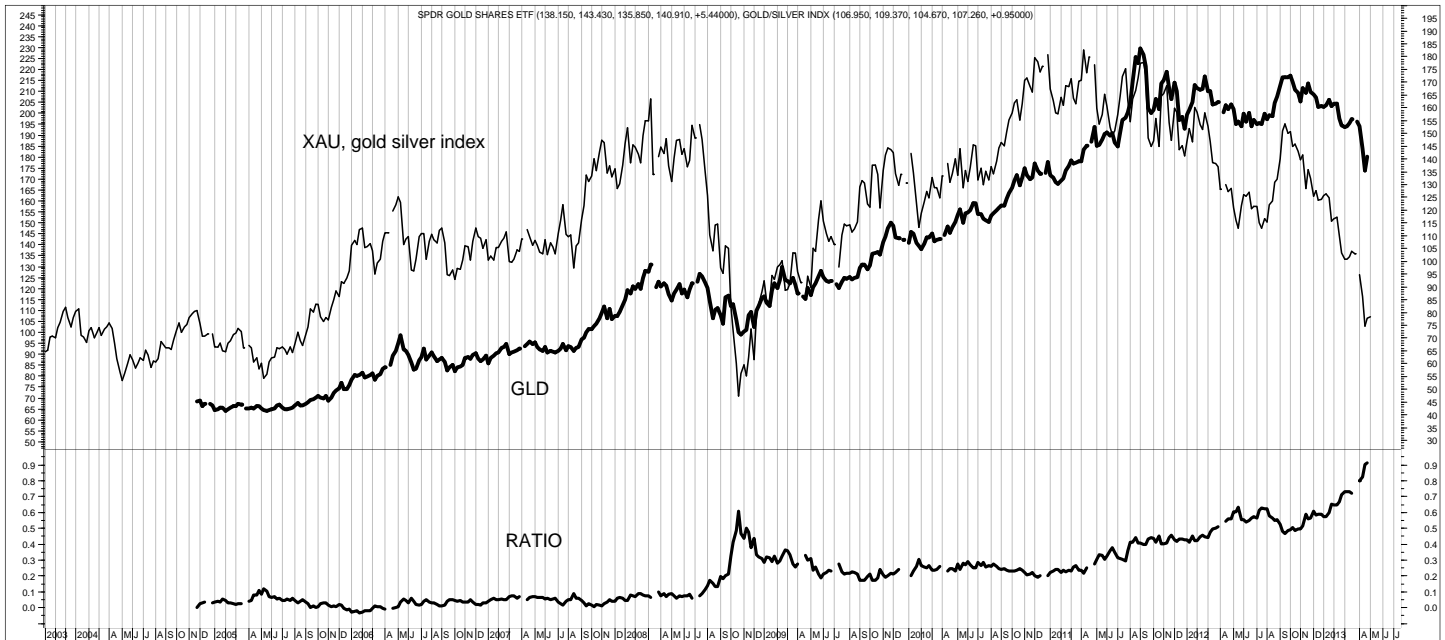
The chart below shows the weekly XAU (thin line on top, an index of 16 gold mining stocks), GLD (thick line on top, gold etf), and the ratio between the two (bottom part). The ratio begins 11/2004 and runs through the present. When the ratio rises, it indicates that GLD is stronger than XAU. When it falls, it shows the reverse.

Basically, the idea here is that the current weak ratio

suggests that mining stocks (XAU) are “cheap” relative to the price of gold. It suggests either XAU should rally or that GLD should fall more to get the ratio back “in line”.

The last time the ratio spiked higher like this was Oct. 2008 when XAU tumbled much further than the price of GLD would warrant.

So, a cautiously bullish development.



TIMING POSITIONS (Intermediate is weeks to months. Long term is months to years. Bullish is an expected series over time of higher highs and higher lows. Bearish is an expected series of lower highs and lower lows. Neutral is an expected series of sideways, without a discernible trend.)

STOCKS: Neutral intermediate-term Neutral long-term

GOLD: Neutral **BONDS:** Bullish (p. 5)

STOCK MARKET COMMENTS (SUM: 4 bull, 5 neutral, 3 bear)

US Gov. fiscal policy, **bearish** (tax hikes, spending cuts).

Corporate activity **neutral** (profit margins to decline).

Economy, **neutral** (GDP estimate at 2% for q1 and q2).

Inflation, **neutral** (moderate expectations of 2%, no surprises yet).

World input, **bullish** (central banks easing).

Consumer, **neutral** (housing stable, taxes up, income flat).

Investor sentiment, **bearish** (too many bulls).

Federal Reserve policy, **bullish** (maintain low rates across curve).

Market valuation, **bullish** (undervalued relative to bond yields).

(40,000 projected on DJ Industrials) (PE at 18x, earnings yield at 5.5%).

Exogenous events, **neutral** (margin calls?).

Hedge fund/leverage risk, **bearish** (NYSE margin debt at a peak).

Technical, **bullish**, (back in gear to the upside).

More of the same from the timing indicators. Economic news remains generally mixed with a positive bias and the stock market loves it. It is banking on Bernanke to bail it out with easy money. Frankly, so far, it has been working. Witness also the recent price recovery in the housing markets across the country. The wealth effect is palpable. The trouble is the stock market moves long-term on earnings, not on the level of interest rates.

At the same time, it's hard to argue with an uptrend that is still climbing the “wall of worry” that morphed over the last year from Europe to China to Fiscal Cliff to Sequestration. Higher taxes and reduced spending should have taken their toll, but the odds of a recession are slim to none right now.

So, the trend in stocks remains up, supported by easy money and corporate belt tightening that has helped earnings.

Performance Scoreboard

INDEXES, FUND STYLES & MAAP PORTFOLIOS	% RETURNS FROM THE PAST X MONTHS THRU 4/30/13					V Vol- atility	INDEX CLOSE	PERFORMANCE IN:						
	X= 12	9	6	3	1			2012	2011	2010	2009	2008	2007	
World Growth Index*	14.31	17.73	13.46	5.25	188	2.7	85.95	-	16.44	-4.17	17.17	35.08	-39.25	9.15
Dow Jones Industrials	12.31	14.08	13.31	7.06	179	2.4	14839.80	-	7.26	5.53	11.02	18.82	-33.84	6.43
Standard & Poors 500	16.63	17.53	14.14	7.02	194	2.7	6432.36	-	15.88	0.00	12.78	23.45	-38.49	3.53
Russell 2000	17.69	21.73	16.58	5.38	-0.37	3.0	4369.83	-	16.35	-5.45	25.31	25.22	-34.80	-2.75
Dow Jones World Index	12.78	17.71	12.77	4.24	2.60	2.6	283.68	-	13.72	-9.91	11.89	31.97	-42.85	8.43
Gold/Sliver Index (XAU)	-33.68	-27.53	-41.91	-26.94	-19.45	7.4	109.36	-	-8.33	-20.28	34.67	35.85	-28.54	21.84
Dow Jones Ttl Bond	8.52	3.37	1.23	2.48	1.74	0.9	327.34	-	10.81	8.51	8.54	17.89	1.80	5.24
Small Cap	13.92	19.66	14.93	4.76	-0.50	2.9	Columns 2 through 6 are the average returns and Column 7 is the average V (Volatility) for all funds in each fund style. Usually, the larger the V, the greater the risk.		14.00	-3.18	24.55	31.86	-39.13	-3.52
Mid Cap	14.68	20.95	16.08	5.46	0.55	2.8			14.79	-4.58	20.91	35.93	-41.93	6.00
Large Cap	13.64	17.69	14.08	5.90	1.47	2.8			15.68	-2.14	15.38	33.01	-39.89	5.81
Value	18.31	21.02	15.78	6.24	1.18	2.7			15.69	-1.81	14.54	30.13	-37.96	-6.44
Contrary	-8.64	-6.68	-6.35	-5.01	-1.85	2.7			-6.86	-11.34	-9.02	-5.99	5.36	-1.11
World/Intntl Growth	13.82	20.31	13.17	3.15	2.93	3.2			18.27	-13.98	16.55	37.01	-47.03	x
Growth/Income	16.63	17.80	14.39	6.78	1.83	2.5	For more information about these model portfolios, please see pages five and six.		13.94	1.57	12.56	25.16	-36.20	0.47
Bond Long	6.09	-1.12	0.41	3.68	2.83	2.4			4.19	24.66	2.99	-8.70	11.91	6.19
Bond High Yield	11.46	9.16	5.93	2.79	1.36	1.2			12.93	3.52	5.41	30.64	-23.05	x
Bond World	7.45	5.16	1.71	0.83	1.75	1.3			11.27	3.98	1.77	10.54	-7.34	4.74
MAAP Aggrsv Grth	4.79	5.21	4.99	3.20	1.32	0.9			3.73	-1.30	11.21	21.35	-10.73	4.30
MAAP Growth	4.55	4.95	4.74	3.07	1.26	0.9			4.09	-1.45	11.47	20.83	-5.75	3.39
MAAP Balanced	5.47	5.93	5.44	4.17	1.28	0.9			4.98	-2.11	13.43	24.69	-13.09	3.17
MAAP Income	1.54	-0.12	0.60	0.72	0.52	0.4			1.72	4.97	3.10	5.60	-4.78	4.32

*World Growth Index is a fully and always invested blend of 20% each in EEM (emrg mkt), EFA (euro asia), IWM (rusl 2000), QQQ (nsdq 100), SPY (s&p 500). Data and MAAP include dividend reinvestments.

(MAAP portfolios deduct a simulated 2% fee, as if we managed it. Subscribers may generally add back 2% to the annual numbers to get your actual results.)

Managed Asset Allocation Program (MAAP)

Fund Selection. We monitor about 800 funds and ETFs. We separate them into their Asset class (Equity, Hybrid, Bond). We subdivide them into Styles like small, large, value, international, etc.. Next, we rank the funds by their risk-adjusted (V volatility) relative performance to the market and peer group (CS). We then rank and pick them by that combined result C (risk adjusted relative performance).

Portfolio Allocation (market timing). We follow a straightforward approach to allocation: Overweight the Portfolio to the investment Style that is performing the strongest on a risk-adjusted basis. We may also use contrary (bear market) funds, and cash (money market funds).

Diversification. We diversify by fund company, investment style, and asset class. The funds themselves normally reduce specific company risk, so that the main investment risk is the market's direction (up or down).

MAAP. Our Managed Asset Allocation Program brings our proprietary fund selection and market timing models together. We EVOLVE, buying from the top 5%, holding as long as the fund is in the top 20%. If it drops below 4 comets, we evolve, selling that fund and buying from the top 5% again. We overlay market timing on this fund selection evolution. The results are four portfolios shown on pages 5 and 6. See Scoreboard above for comparative performances.

Watercourse Way Holdings, LLC publishes and owns *No-Load Mutual Fund Selections & Timing Newsletter*. It is normally posted to InvestmentST.com and mailed by the fifth business day of the month. Price data is through the previous month's end. For additional information on this Newsletter, please call 1-800-800-6563.

Email SMcKee@InvestmentST.com with any questions or comments.

To subscribe, please call 1-800-800-6563 or visit our web site InvestmentST.com or write to PO Box 830396 Richardson TX 75083-0396. Subscriptions are \$180.00 per 12 issues (12 months) or \$350.00 per 24 issues (two years). Subscriptions also include emailed hotline updates and special bonus reports. Subscriptions may be tax deductible. Subscribers who reside outside of the United States and receive the mailed issue must add \$36.00 for postage and special handling per each 12 issues. No additional cost for on-line retrieval only.

Disclaimer, Nothing in this Newsletter should be construed as an offer to buy or sell any securities. It does not consider your personal situation. The information herein is assembled from sources who are believed reliable, but the accuracy of data or advice cannot be guaranteed. Past performance does not guarantee future performance. No chart, strategy or tactic guarantees gains or losses. No assurances can be given that objectives will be met. The company, its officers, staff, and clients may or may not invest in the funds and/or in the proportions shown in this Newsletter. All disclaim any and all liability for any losses that may result from use of any data presented herein. All investments involve risk of loss. Read a fund's prospectus carefully before investing.

To reprint limited material, provide full credit, including name, address, phone number, and web site InvestmentST.com.

Copyright, ©, 1984-2013, Watercourse Way Holdings, LLC. All rights reserved.

Updates For NLMFS&T Newsletter

A couple of funds stopped trading and were deleted this past month. They were replaced by two funds from PrimeCap and a new Pimco fund.

By now, you should have had a chance to read the Special Report on the secular bond market posted at our web site InvestmentST.com. You will find a link on the same page where you download this Newsletter.

There's been no other changes.

Instruction Legend For Pages 10-26

Pages 10-26 list all of the funds that we track (about 800) in various categories. Pages 9-26 are electronic only (available on line at InvestmentST.com in PDF format); they are not included in the mailed version, which is the same pages 1-8. The two letters are identical, except for their length. The database of no-load funds and ETFs is separated into three primary asset types (Hybrid (H), Equity (E), Bond (B)). Fidelity Select Funds (select) are also separated into a type. That is four separate asset types. (I also use cash as an asset type.)

The funds in each asset type are ranked by C, which is a fund's risk-adjusted relative performance. We assign the top 5% five comets (*****), the next 15% four comets (****), the middle 60% three comets (***) , the lower 15% two comets (**), and the worst 5% one comet (*). This dynamic ranking system means a fund's rank may change each month. The main selecting strategy is to buy from the top 5% of the funds in the NLMFS&T Newsletter and hold as long as the fund remains in the top 20% (first 5%, five *****, and next 15%, four ****). This 20% group is highlighted in green on the next 16 pages. When (not if) a fund falls out of that top grouping, it is time to sell and reenter with a fund picked from the top 5%. Each month go through your portfolio to see where your funds are ranked. Evolve out of the laggards into the leaders over time.

This buy/sell selecting decision, however, may be mitigated by a few things. We want some diversification between styles (small cap, large cap, international, etc). We want to hold long enough to avoid short-term redemption charges by either the fund or broker. Taxes may also impact the decision. This selecting strategy may also be suspended during expected market timing considerations, such as an outright buy or sell. If we raise cash, for example, we may still sell a highly ranked fund.

Pages 10-26 are separated by asset type H, E, B, or Select and then sorted alphabetically by fund name. Hybrid funds are shown on page 10. Equity funds are on pages 11-18. Bond funds are on pages 19-20. Fidelity Select funds are on page 21 (this should provide a relative view of the comparative performance of different industries). ETFs are listed separately on page 22, but are ranked according to their overall database rank within the asset type. Pages 23-26 show only the American Century, Fidelity, T. Rowe Price, and Vanguard families, as they are also ranked within the overall database rank. All listings are grouped by fives.

This selecting and timing strategy is an active asset allocation process over time. It is not buy/hold/forget. We believe funds come into and out of prominence, that no single fund is right forever. We also believe the market has value, that there are times to be in the market and times to be out of the market. In summary, we simply, consistently strive to make money and not lose it over bull and bear markets.

All Hybrid Funds Alphabetically

Fund Name	Symbol	Style	12m	9m	6m	3m	1m	V	NAV	Rank
Alpine Foundation	ADBYX	HB	10.50	11.59	8.98	5.85	2.23	1.59	12.40	***
AmBcn Blncd	AABPX	HB	14.22	15.05	11.12	5.91	2.06	2.00	14.15	***
AmCent Blncd Investors	TWBIX	HB	11.07	11.14	8.75	4.53	1.39	1.65	18.26	***
AmCent One Ch Very Consvrt	AONIX	HB	5.79	4.96	3.63	2.14	1.04	0.72	11.70	***
AmCent Strtgc Agg	TWSAX	HB	11.73	14.66	11.18	4.62	1.88	2.15	8.68	***
AmCent Strtgc Consvrtv	TWSCX	HB	8.22	8.38	6.26	3.08	1.34	1.21	6.03	***
Aston Mntg Balncd	MOBAX	HB	9.51	8.95	8.71	4.24	1.45	1.59	23.16	***
Berwyn Income	BERIX	HGI	9.20	10.35	7.28	3.96	2.90	1.19	13.83	*****
Bridgeway Mngd Volatility	BRBPX	HB	6.11	7.00	3.35	2.67	0.32	1.13	12.67	**
Buffalo Flexible Incm	BUFBX	HB	14.15	12.33	9.44	4.99	1.24	1.52	13.70	*****
CGM Mutual Fund	LOMMX	HGI	13.06	22.68	11.11	3.72	0.48	2.73	31.49	***
CornerCap Balanced	CBLFX	HB	10.53	15.45	12.46	5.56	1.50	1.85	14.24	***
Dodge & Cox Balanced	DODBX	HB	19.10	18.64	13.53	5.68	1.60	2.38	85.87	***
Dreyfus Balncd	THBPX	HB	13.31	13.96	10.46	3.67	1.04	2.01	19.48	***
Fidelity AM Eqty 20%	FASIX	HA	5.72	4.67	3.51	1.86	0.94	0.64	13.46	*****
Fidelity AM Eqty 50%	FASMX	HA	9.82	9.95	7.41	3.18	1.60	1.38	17.35	***
Fidelity AM Eqty 70%	FASGX	HA	12.07	13.41	9.93	3.90	1.86	1.93	18.65	***
Fidelity AM Eqty 85%	FAMRX	HA	13.83	15.93	11.88	4.47	2.12	2.32	15.44	***
Fidelity Balanced	FBALX	HB	11.11	11.19	8.49	4.13	1.21	1.77	21.55	***
Fidelity Equity Income II	FEQTX	HGI	19.20	17.63	14.36	7.99	2.31	2.37	22.08	***
Fidelity Global Balanced	FGBLX	HGI	9.17	11.29	7.09	3.22	1.77	1.67	24.67	***
Fidelity Puritan	FPURX	HGI	10.54	11.24	8.27	3.90	1.11	1.81	20.68	***
Forward Balncd	ACBIX	HB	7.89	9.27	7.05	3.07	1.76	1.26	15.63	***
Forward Incm/Grth	ACIGX	HGI	7.17	7.10	5.03	2.14	1.39	0.96	15.67	***
FPA Crescent	FPACX	HGI	13.08	15.39	11.95	4.50	1.52	1.88	30.64	***
Gamco Mathers Fund	MATRX	HGI	-8.71	-7.21	-6.19	-2.97	-1.39	0.71	8.49	*
Greenspring Fund	GRSPX	HGI	10.90	12.91	9.68	3.14	-0.40	1.56	24.65	***
Hatteras Alpha Hdgd	ALPHX	HGI	1.49	3.23	2.84	0.56	0.00	0.74	10.87	**
Hennessey Balanced	HBFBX	HB	8.80	6.50	7.00	5.07	2.26	1.31	12.69	***
Hennessey Eqty Incm	HEIFX	HB	10.73	9.52	9.97	5.67	1.61	1.38	15.19	*****
Holland Balanced	HOLBX	HB	13.12	11.46	10.19	6.29	1.84	1.82	17.73	***
Hussman Strtg Ttl Rtrn	HSTRX	HB	-3.87	-4.02	-5.15	-3.07	-2.94	0.72	11.54	*
Intrepid Capital	ICMBX	HB	10.91	12.58	6.02	3.30	-0.34	1.81	11.84	**
Janus Balanced	JABAX	HB	12.10	12.91	10.05	5.26	1.72	1.79	28.32	***
Kinetics Multi-Disc	KMDNX	HB	7.67	9.42	4.31	-1.18	-1.83	2.04	11.24	**
Lauthold Core Invst	LCORX	HB	8.73	11.78	8.83	3.54	0.17	1.78	17.79	**
Madison Mosaic Balanced	BHBFX	HB	19.37	17.46	15.53	8.30	2.15	2.27	20.47	*****
Mairs & Power Balanced	MAPOX	HB	15.77	15.70	11.29	4.61	1.01	1.90	76.67	***
ManningNap Blncd Cnsrvtv	EXDAX	HB	9.25	7.77	6.11	2.86	1.23	1.00	14.02	*****
Northern Incm Eqty	NOIEX	HGI	17.33	17.98	13.80	7.00	2.16	2.23	14.82	*****
Oakmark Eqty Incm I	OAKBX	HB	7.57	11.64	7.75	2.30	-0.17	1.65	30.21	**
Pax World Balanced	PAXWX	HB	7.86	10.61	7.64	2.24	0.52	1.77	25.08	**
Permanent Portfolio	PRPFX	HB	0.11	3.06	-0.78	-3.13	-1.78	1.49	48.04	*
Pimco All Asset	PASDX	HA	10.64	9.73	5.41	1.81	2.07	1.50	12.84	***
Pimco All Asset All Authrty	PAUDX	HA	10.03	8.50	3.86	1.06	1.93	1.62	11.11	**
Price Balanced	RPBAX	HB	11.95	13.53	9.77	4.24	1.94	1.89	22.08	***
Price Capital Appreciation	PRWCX	HGI	15.11	15.52	11.63	5.24	1.46	1.86	24.30	*****
Price Intrntl Grth Incm	TRIGX	HGI	14.95	21.74	14.87	4.06	4.22	3.18	14.09	***
Rainier Balanced	RIMBX	HB	7.08	10.24	7.92	3.30	0.58	1.65	15.58	**
SIT Balanced	SIBAX	HB	8.65	10.43	8.68	4.04	1.05	1.72	18.61	***
Teton Westwood Balanced	WEBAX	HB	12.10	12.89	9.84	5.04	1.71	1.70	12.49	***
Teton Westwood Incm	WESRX	HGI	15.98	16.51	14.76	7.47	1.61	2.17	10.09	*****
Value Line Asset Allctn	VLAAX	HB	12.11	14.67	11.23	4.27	0.85	1.74	24.89	***
Vanguard Balanced	VBINX	HB	11.59	11.56	9.24	4.80	1.39	1.60	25.55	***
Vanguard Star	VGSTX	HGI	12.49	13.48	9.96	4.15	1.96	1.76	22.32	***
Vanguard Wellesley Incm	VWINX	HB	11.54	8.30	6.54	4.52	1.97	1.10	25.39	*****
Vanguard Wellington	VWELX	HB	14.70	14.06	10.54	5.76	2.28	1.74	36.83	*****
Villere Balanced	VILLX	HB	16.77	17.96	13.30	4.80	2.02	1.96	22.72	*****
Weitz Balanced	WBALX	HB	11.13	11.85	9.17	3.96	0.44	1.51	13.64	***

Equity Funds Alphabetically

Legend	Fund Name	Symbol	Style	12m	9m	6m	3m	1m	V	NAV	Rank
F S T	Aegis Value	AVALX	EV	30.57	33.25	23.68	6.90	-1.37	3.33	18.75	****
Fn So Tn R2<60d	AI Frank Fund	VALUX	EV	19.60	23.57	17.12	6.51	1.37	2.91	25.18	***
F S T R1<60d	Alpine Cyclical Adv PPTY	EUEYX	ERE	31.88	33.18	13.86	4.30	3.81	3.55	26.69	***
F S T R1<60d	Alpine Intl Real Estate	EGLRX	ERE	19.86	28.83	13.88	1.86	3.53	3.98	25.21	***
F S T R1<60d	Alpine Realty Inc/Grth	AIGYX	ERE	18.05	14.47	17.87	10.71	6.59	2.94	20.06	***
Fn So Tn	Amana Grth	AMAGX	ELC	7.31	10.99	9.80	2.97	0.84	2.14	28.74	***
Fn So Tn	Amana Incm	AMANX	EV	16.22	18.40	15.86	7.25	2.04	2.10	38.59	*****
Fn So Tn R2<90d	AmBcn Emrg Eqty	AAEPX	EW	5.41	12.11	6.27	-2.00	1.12	3.14	11.75	**
Fn So Tn	AmBcn Intrntl Eqty	AAIPX	EW	18.38	21.83	12.93	2.81	4.15	3.63	17.56	***
Fn So Tn	AmBcn LrgCap Value	AAGPX	ELC	20.13	22.84	17.19	8.35	2.76	3.02	23.49	***
Fn So Tn	AmBcn MidCap Value	AMPAX	EMC	20.16	25.09	19.62	8.05	0.97	2.82	12.48	*****
Fn So Tn	AmBcn SmallCap Value	AVPAX	ESC	17.86	23.05	17.35	4.18	-1.82	3.08	23.17	***
Fn So Tn	AmBcn Stpn SmlCap	STSGX	ESC	11.18	14.21	12.11	4.45	-3.15	3.44	13.67	**
Fn So Tn	AmCent Cap Value	ACTIX	EV	19.38	19.75	14.00	6.34	2.12	2.71	7.72	***
Fn So Tn R2<60d	AmCent Emrg Mrkt	TWMIX	EW	8.15	16.18	8.55	0.47	2.18	2.93	8.89	**
Fn So Tn	AmCent Equity Growth	BEQGX	ELC	16.36	18.43	14.58	6.76	1.70	2.75	27.44	***
Fn So Tn C	AmCent Equity Income	TWEIX	EGI	17.50	14.88	11.79	6.08	2.24	2.01	8.66	*****
Fn So Tn R1<60d	AmCent Global Gold	BGEIX	EG	-32.91	-27.04	-41.23	-27.05	-19.47	7.35	11.95	*
Fn So Tn R2<60d	AmCent Global Grth	TWGGX	EW	9.60	14.81	11.91	3.82	1.93	2.70	10.58	***
Fn So Tn C	AmCent Grwth Investors	TWCGX	ELC	8.05	12.94	11.62	5.33	1.48	2.55	29.46	***
Fn So Tn	AmCent Hertg Investors	TWHIX	EMC	7.41	15.55	12.01	4.81	0.86	2.86	24.62	***
So Tn	AmCent Income & Growth	BIGRX	EGI	17.66	19.92	16.20	8.78	2.97	2.79	31.19	***
Fn So Tn R2<60d	AmCent Intl Discv	TWEGX	EW	14.03	22.48	13.34	7.08	4.34	2.84	11.07	***
Fn So Tn R2<60d	AmCent Intl Grth	TWIEX	EW	18.67	23.63	16.07	5.39	4.51	3.28	12.51	***
Fn So Tn	AmCent Lrg Co Value	ALVIX	ELC	19.55	20.01	14.11	6.32	2.17	2.72	7.07	**
Fn So Tn	AmCent Midcap Value	ACMVX	EMC	20.53	22.01	16.71	6.60	1.10	2.40	14.69	*****
Fn So Tn	AmCent Real Estate	REACX	ERE	16.58	13.61	16.06	8.73	5.92	2.68	26.49	***
Fn So Tn	AmCent Select Investors	TWCIX	ELC	6.72	11.35	9.10	4.15	1.90	2.80	47.15	**
Fn So Tn	AmCent Small Co	ASQIX	ESC	17.65	22.10	19.22	7.24	0.10	2.93	9.93	***
Fn So Tn R2<60d	AmCent SmlCap Grth	ANOIX	ESC	12.20	20.75	15.25	4.98	-0.88	2.99	10.11	***
Fn So Tn	AmCent Ultra Investors	TWCUX	EMC	8.46	13.47	10.95	4.92	1.80	2.70	28.35	***
Fn So Tn	AmCent Utilities Income	BULIX	EGI	22.42	12.41	14.92	13.85	5.96	2.72	17.77	*****
Fn So Tn	AmCent Value	TWVLX	EV	19.42	20.53	15.61	6.52	1.55	2.65	7.22	***
Fn So Tn R2<60d	AmCent Veedot	AMVIX	ESC	18.05	20.54	15.64	8.15	1.95	2.54	7.83	*****
Fn So Tn	AmCent Vista Investors	TWCVX	ESC	7.99	16.46	13.36	4.53	0.77	2.93	19.60	***
Fn So Tn C R2<365d	AMIDEX 35 Israel	AMDEX	EW	-2.35	18.93	6.80	0.94	-1.75	3.46	12.88	**
Fn So Tn	Ariel Apprctn	CAAPX	ESC	24.51	32.41	22.96	7.74	1.67	3.93	48.19	***
Fn So Tn	Ariel Fund	ARGFX	EMC	25.84	34.41	21.04	7.06	0.25	3.78	59.43	***
Fn So Tn	Artio Gbl Eqty	BJGQX	EW	4.27	14.74	8.70	3.70	2.19	2.46	37.82	***
Fn So Tn C	Artio Intrntl Eqty	BJBIX	EW	12.11	22.54	16.48	3.06	5.34	3.10	27.63	***
Fn So Tn R2<90d	Artisan Gbl Value	ARTGX	EW	22.06	23.62	16.26	6.70	2.69	2.74	13.37	*****
Fn So Tn R2<90d	Artisan Grth Opp	ARTRX	ELC	16.93	20.43	15.92	5.37	3.27	3.01	16.09	***
Fn So Tn R2<90d	Artisan International	ARTIX	EW	18.90	21.99	15.81	4.31	3.11	3.09	26.88	***
Fn So Tn R2<90d C	Artisan Intl SmCap	ARTJX	EW	25.22	31.35	17.42	5.93	3.53	3.29	24.65	*****
Fn So Tn C	Artisan Mid Cap	ARTMX	EMC	9.80	20.22	18.08	5.90	2.47	3.15	41.82	***
Fn So Tn C	Artisan MidCap Val	ARTQX	EMC	19.43	24.89	20.91	7.83	-0.37	2.67	24.09	*****
Fn So Tn	Artisan Small Cap	ARTSX	ESC	13.68	17.28	15.05	3.61	-1.12	3.14	22.94	***
Fn So Tn C	Artisan SmCap Val	ARTVX	ESC	2.83	12.44	12.51	0.68	-2.46	2.65	16.23	**
Fn So Tn	Artisan Value	ARTLX	ELC	14.76	17.85	14.14	5.35	0.56	2.63	12.61	***
Fn So Tn	Aston Mid Cap	CHTTX	EMC	23.27	27.39	20.79	5.91	0.05	3.65	38.38	***
Fn So Tn	Aston Mntg Grth	MCGFX	ELC	14.50	15.04	14.36	6.19	1.87	2.60	26.75	***
Fn So Tn R2<90d	Aston Real Estate	ARFCX	ERE	20.35	17.48	17.82	10.44	6.10	2.69	12.17	*****
Fn So Tn	Aston TMRO Divrsfd Eqty	ATLVX	EV	12.86	16.33	12.19	5.00	0.00	2.71	15.12	***
Fn So T C	Aston TMRO Sml Cap	ATASX	ESC	14.33	17.13	14.33	3.61	-1.89	3.57	21.24	***
Fn So Tn	Aston Value	RVALX	EV	15.37	17.30	14.01	6.22	2.30	2.86	12.46	***
Fn So Tn	Aston Vrds SmlCap	VERDX	EA	8.16	13.83	9.90	2.43	-3.37	3.54	14.32	**
Fn So T	Auxier Focus	AUXFX	EMC	14.60	16.14	13.71	6.88	2.36	2.11	18.65	*****
Fn So Tn	Baron Asset	BARAX	EV	15.32	24.67	17.23	6.54	0.16	3.03	55.91	***
Fn So Tn	Baron Growth	BGRFX	ELC	20.75	23.55	16.66	6.19	0.31	2.44	61.03	*****
Fn So Tn	Baron loppntnty	BIOPX	EMC	6.68	15.62	11.31	4.12	-0.42	3.54	16.44	**
Fn So Tn	Baron Partners	BPTRX	EMC	23.47	32.42	24.43	11.11	1.57	3.16	27.20	*****
Fn So Tn	Baron Small Cap	BSCFX	EV	15.91	25.24	17.50	5.81	-0.07	3.14	29.50	***
F S T R1<180d	Berwyn	BERWX	ESC	19.10	23.25	17.20	3.75	0.09	3.26	35.13	***
Fn So Tn R2<30d	BMO Emrg Mrkt	MEMYX	EW	8.46	12.98	9.76	2.71	1.20	2.33	14.39	***
Fn So Tn R2<30d	BMO LgCap Grth/Incm	MASTX	ELC	12.04	14.48	11.09	5.56	0.90	2.52	14.61	***
Fn So Tn R2<30d	BMO LgCap Value	MREIX	EGI	19.86	22.62	17.04	7.47	1.14	3.01	14.24	***
Fn So Tn R2<30d	BMO Mid Cap Stock	MRMSX	EMC	12.54	22.34	15.16	4.55	-0.71	2.75	22.29	***
Fn So Tn R2<30d	BMO Mid Cap Value	MRVEX	EMC	20.79	25.70	19.09	7.16	0.79	2.82	15.26	*****

Equity Funds Alphabetically

Legend	Fund Name	Symbol	Style	12m	9m	6m	3m	1m	V	NAV	Rank
Fn So Tn R2<30d	BMO Small Cap Grth	MRSCX	ESC	14.45	26.11	18.23	8.31	-0.39	3.17	20.59	***
Fn So Tn R2<30d	BMO Small Cap Value	MRSYX	ESC	29.48	33.03	20.35	7.30	-0.08	3.24	12.78	*****
F S T	Brandywine	BRWIX	ESC	1.41	10.74	11.22	2.37	-0.46	3.03	25.88	**
F S T	Bridgeway BIChip 35	BRLIX	ELC	18.46	17.61	15.94	7.96	2.26	2.86	9.49	***
F S T	Bridgeway Large Grth	BRLGX	ELC	16.70	20.69	18.58	7.96	2.43	2.80	16.00	***
F S T C	Bridgeway Large Val	BRLVX	ELC	24.73	25.06	18.95	8.68	1.43	2.69	18.40	*****
F S T	Bridgeway Small Grth	BRSGX	ESC	15.47	19.86	17.19	9.24	0.14	3.37	14.18	***
F S T	Bridgeway Small Val	BRSVX	ESC	27.21	28.73	20.99	10.22	1.34	3.08	18.88	*****
F So T R1<14d	Brown Growth	BIAGX	ELC	7.04	16.00	11.22	2.45	-0.87	3.17	15.91	**
Fn T R2<14d	Brown Intrntl	BCIIX	EW	18.57	25.63	18.18	5.43	3.19	3.31	10.68	***
Fn So T R2<14d	Brown Midcap	BCMSX	EMC	10.58	20.37	13.45	2.77	0.18	2.74	21.91	**
F S T R1<14d	Brown Small	BIASX	ESC	10.22	17.73	12.23	2.45	-1.89	2.61	15.05	**
Fn So Tn R2<60d	Buffalo Discovery	BUFTX	EA	7.00	12.89	11.85	0.72	-1.99	3.39	16.74	**
Fn So Tn R2<60d	Buffalo Growth	BUFGX	ELC	10.09	16.22	15.78	5.51	2.54	3.06	30.28	***
Fn So Tn R2<60d	Buffalo Large Cap	BUFEX	ELC	12.67	18.79	16.07	3.80	1.10	2.80	22.13	***
Fn So Tn R2<180d	Buffalo Micro Cap	BUFOX	ESC	16.81	20.17	12.51	5.52	-0.72	3.61	13.76	**
Fn So Tn R2<60d	Buffalo Mid Cap	BUFMX	EMC	8.07	17.16	14.88	1.06	0.89	3.11	18.10	***
Fn So Tn R2<180d C	Buffalo Small Cap	BUFSX	ESC	15.50	19.89	17.22	5.37	0.87	3.05	31.20	***
F S T R2<180d	Caldwell & Oakin Mrkt Opprtnty	COAGX	EA	11.67	12.27	5.90	3.24	-0.56	1.59	22.96	***
Fn S T	Calfrnia Invest S&P Mid Cap	SPMIX	EMC	18.20	24.17	19.23	6.43	0.50	2.62	25.93	*****
Fn S T	Calfrnia Invest S&P SmCap	SMCIX	ESC	17.13	20.70	16.52	5.23	-0.27	2.65	18.14	**
Fn S T	California Invest S&P 500 Indx	SPFIX	EGI	16.58	17.71	14.28	7.07	1.86	2.65	32.78	***
Fn So Tn R2<59d	Causeway Intl Val	CIVVX	EW	17.33	20.87	10.84	2.53	3.85	3.53	13.77	***
Fn So Tn R1<90d	Century SmCap	CSMVX	ESC	7.79	16.45	11.51	2.90	-1.63	2.83	28.38	***
S T	CGM Focus	CGMFX	EA	13.92	30.33	16.81	3.75	-0.66	3.69	33.22	***
S T	CGM Realty Fund	CGMRX	ERE	7.25	10.03	14.27	5.40	3.48	2.83	32.30	***
Fn So Tn R2<60d	Chase Grth	CHASX	ELC	7.10	9.82	9.71	3.99	0.48	2.30	14.61	***
Fn So Tn	Chesapk Core Grth	CHCGX	ELC	6.26	12.90	9.44	2.76	0.76	3.12	17.15	**
Fn So Tn	Clipper Fund	CFIMX	EV	17.46	21.81	16.45	7.86	1.08	2.38	78.38	*****
Fn So Tn	Cohen & Steers Realty Shares	CSRSX	ERE	16.39	15.27	17.94	10.43	6.35	2.75	73.53	***
F S T R1<60d	CornerCap Small Value	CSCVX	ESC	14.46	16.39	14.56	3.90	-1.02	2.91	13.60	***
Fn So Tn C	CRM Mid Cap Value	CRMMX	EMC	15.47	19.05	15.11	4.47	0.12	2.32	33.41	***
Fn So Tn	CRM Sml Cap Value	CRMSX	EMC	18.57	21.36	17.61	4.76	-1.07	2.59	21.33	***
Fn So Tn	CRM Sml Mid Cap Value	CRMAX	EMC	16.01	21.03	16.57	4.68	-0.65	2.43	16.76	***
ETF	Currency Euro	FXE	EC	-0.90	6.73	1.42	-3.11	2.71	2.17	130.53	**
F S T	Dodge & Cox Intl Stock	DODFX	EW	18.67	25.54	15.90	2.78	4.12	3.60	37.38	***
F S T	Dodge & Cox Stock	DODGX	ELC	24.18	24.17	17.87	7.30	1.93	3.07	138.26	***
Fn So Tn R2<30d	Domini Social Equity	DSEFX	EGI	9.25	13.75	12.76	8.00	2.27	2.55	36.94	***
Fn So Tn	Dreyfus Appreciation	DGAGX	EA	10.91	11.31	9.47	5.09	2.21	2.45	48.05	***
Fn So Tn	Dreyfus Displnd Stock	DDSTX	EGI	12.13	12.95	10.92	3.55	0.76	2.86	35.90	***
Fn So Tn	Dreyfus Fund	DREVX	ELC	12.81	14.40	11.34	3.64	0.38	2.77	10.63	***
Fn So Tn	Dreyfus Growth & Income	DGRIX	EGI	15.71	18.78	14.65	4.68	1.22	2.85	17.48	***
Fn So Tn C	Dreyfus Growth Opportunity	DREQX	ELC	10.53	13.91	11.56	3.93	0.80	2.63	11.36	***
Fn So Tn	Dreyfus Intrnl Stock	DIISX	EW	18.82	24.09	16.44	4.91	5.19	3.46	15.82	***
Fn So Tn	Dreyfus Mid Cap Index	PESPX	EMC	18.14	24.33	18.91	6.35	0.58	2.59	32.95	*****
Fn So Tn	Dreyfus S&P 500	PEOPX	EGI	16.36	17.39	14.16	7.06	1.89	2.65	43.24	***
Fn So Tn	Dreyfus Small Cap Index	DISSX	ESC	17.95	21.80	17.19	6.25	-0.29	2.83	24.43	***
Fn So Tn C	Dreyfus Third Century	DRTHX	ELC	12.29	16.96	15.25	7.00	1.62	2.74	12.54	***
Fn So Tn R2<60d	Driehaus Emrg Mrkt	DREGX	EW	13.21	20.22	13.79	2.90	2.32	2.98	32.66	***
Fn So Tn R2<60d	Driehaus Intl Dis	DRIDX	EW	6.44	17.99	11.25	2.80	2.87	2.56	29.77	**
F S T R2<60d C	Fairholme	FAIRX	ELC	17.37	26.63	11.50	7.20	3.52	5.22	35.28	**
Fn So Tn	FAM Equity Income	FAMEX	EGI	18.15	19.42	17.69	7.13	0.26	2.21	22.79	*****
Fn So Tn	FAM Value Fund	FAMVX	ESC	15.50	19.18	15.74	7.02	1.35	2.08	55.67	*****
Fn So Tn C	Federated Kaufmann	KAUFX	EMC	12.27	19.07	15.23	5.86	-0.36	3.07	5.60	***
Fn So Tn	Federated Mid Cap Indx	FMDCX	EMC	18.41	24.43	19.08	6.40	0.62	2.61	25.84	*****
Fn S T R1.5<90d	Fidelity Aggrsv Grth	FDEGX	EA	13.69	21.24	17.49	6.50	1.25	2.75	23.44	***
Fn S T R1<30d	Fidelity Aggrsv Intl	FIVFX	EW	16.73	22.66	15.93	4.73	2.31	3.00	15.07	***
Fn S T	Fidelity Blue Chip Growth	FBGRX	ELC	10.88	16.66	13.66	5.91	1.44	3.15	54.26	***
Fn S T	Fidelity Capital Appreciation	FDCAI	ELC	17.14	20.17	16.17	7.97	2.00	2.46	33.07	*****
Fn S T	Fidelity Contra	FCNTX	ELC	12.56	15.60	13.48	6.99	1.82	2.68	85.45	***
Fn S T	Fidelity Convertible Securities	FCVXS	EGI	15.64	21.91	14.93	4.06	0.79	2.19	27.95	*****
Fn S T	Fidelity Disciplined Equity	FDEQX	ELC	17.72	19.71	15.46	7.51	1.51	2.99	27.63	***
Fn S T R1<30d	Fidelity Diversified Intl	FDIVX	EW	17.22	21.80	14.60	5.44	4.70	3.11	32.73	***
Fn S T	Fidelity Dividend Growth	FDGFX	ELC	14.79	19.00	13.66	5.30	1.38	2.88	33.15	***
Fn S T R1.5<90d	Fidelity Emrg Asia	FSEAX	EWR	9.69	16.37	9.12	1.12	2.72	3.00	30.61	**
Fn S T R1.5<90d	Fidelity Emrg Mrkt	FEMKX	EW	6.47	15.48	10.32	2.86	1.82	2.65	24.11	***
Fn S T R1<30d	Fidelity Europe	FIEUX	EWR	20.82	24.98	14.28	2.75	3.57	3.62	33.67	***
Fn S T R1<30d	Fidelity Europe Cap App	FECAX	EWR	20.11	25.82	14.00	2.61	3.55	3.76	20.41	***
Fn S T R.75<30d	Fidelity Export & Multintl	FEXPX	ELC	13.53	14.76	12.35	6.25	0.96	2.62	24.15	***
Fn S T C	Fidelity Fifty	FFTYX	EV	13.56	18.55	14.23	6.11	1.12	2.79	22.59	***

Equity Funds Alphabetically

Legend	Fund Name	Symbol	Style	12m	9m	6m	3m	1m	V	NAV	Rank
Fn S T	Fidelity Fund	FFIDX	ELC	14.33	15.64	13.10	5.62	1.50	2.66	39.87	***
Fn S T	Fidelity Growth & Income	FGRIX	ELC	20.28	21.53	16.01	8.07	2.78	2.94	24.07	***
Fn S T C	Fidelity Growth Company	FDGRX	ELC	9.57	15.73	13.85	6.55	2.28	3.23	103.45	***
Fn S T	Fidelity Independence	FDFFX	ELC	14.62	23.93	16.50	5.75	1.64	2.98	29.08	***
Fn S T R1<30d	Fidelity Intrntl Discvry	FIGRX	EW	20.49	25.11	16.41	6.60	4.86	3.21	36.49	***
Fn S T R1.5<90d	Fidelity Japan	FJPNX	EWR	22.74	30.77	30.50	17.36	8.28	3.79	11.90	*****
Fn S T R1.5<90d	Fidelity Latin America	FLATX	EWR	-5.86	2.48	1.44	-4.65	-0.31	3.05	45.36	**
Fn S T R1.5<90d	Fidelity Levrg Co Stk	FLVCX	EMC	25.78	29.53	19.73	5.75	0.58	2.93	36.41	*****
Fn S T R1.5<90d	Fidelity Low Priced Stock	FLPSX	ESC	19.26	24.80	18.40	8.10	2.87	3.00	44.85	***
Fn S T	Fidelity LrgCap Stock	FLCSX	ELC	19.74	23.02	15.99	7.22	2.07	3.24	23.17	***
Fn S T	Fidelity Magellan	FMAGX	EMC	13.10	16.51	12.13	4.88	0.99	2.88	80.75	***
Fn S T	Fidelity Mega Cap	FGRTX	ELC	18.14	20.02	14.21	7.22	2.77	2.99	13.37	***
Fn S T R.75<30d	Fidelity Mid Cap Stock	FMCSX	EMC	16.50	21.95	17.30	7.88	1.32	2.97	33.68	***
Fn S T	Fidelity New Millennium	FMLX	ELC	15.99	19.60	14.68	7.02	1.10	2.86	34.15	***
Fn S T	Fidelity OTC	FOCPX	ESC	9.87	17.43	15.48	6.98	3.59	3.58	67.24	***
Fn S T R1<30d	Fidelity Overseas	FOSFX	EW	20.57	25.24	16.57	6.19	4.48	3.30	35.67	***
Fn S T R1.5<90d	Fidelity Pacific Basin	FPBFX	EWR	25.36	34.70	22.28	13.70	6.47	3.44	29.47	*****
Fn S T R.75<90d	Fidelity Real Estate	FRESX	ERE	17.71	15.34	18.17	10.64	6.47	2.82	36.71	***
Fn S T R2<90d	Fidelity Small Cap Stock	FSLCX	ESC	10.52	17.22	13.28	3.72	-0.05	2.69	19.78	***
Fn S T R1.5<90d C	Fidelity Small Cap Value	FCPVX	ESC	24.21	28.41	20.64	6.58	-1.22	2.99	18.62	*****
Fn S T	Fidelity Stock Slctr AllCap	FDSSX	ELC	16.12	18.70	14.19	5.86	1.70	2.75	31.63	***
Fn S T R1.5<90d	Fidelity Stock Slctr SmCap	FDSCX	ESC	13.62	19.19	15.13	5.09	-0.04	2.72	22.50	***
Fn S T	Fidelity Trend	FTRNX	ELC	11.95	15.49	11.45	5.34	1.69	2.69	79.90	***
Fn S T	Fidelity Utilities	FIUIX	ELC	23.50	15.14	14.71	12.21	5.58	2.67	21.54	*****
Fn S T	Fidelity Value	FDVLX	EV	23.20	26.48	19.31	6.93	0.84	2.96	87.28	*****
Fn S T	Fidelity Value Strategies	FSLSX	EV	24.11	25.95	17.81	6.47	1.92	2.68	35.53	*****
Fn S T R1<30d	Fidelity Worldwide	FWWFX	EW	16.59	21.36	15.06	6.16	2.82	2.84	22.57	***
F So Tn	Flex Muirfield	FLMFX	ELC	10.47	12.83	10.47	4.11	-0.47	2.37	6.33	***
F So Tn	Flex Quantex	FLCGX	ELC	22.47	31.08	20.35	6.27	0.83	3.34	29.17	***
Fn So Tn C	FMI Common Stk	FMIMX	ESC	10.35	16.72	14.37	4.58	-0.38	2.10	26.26	***
Fn So Tn	FMI Focus	FMIOX	ESC	11.61	21.85	20.22	4.48	-1.71	3.46	34.96	***
Fn So Tn	FMI Large Cap	FMIHX	ELC	17.55	17.90	16.46	7.62	2.26	2.51	19.48	***
Fn So T	Forester Discovery	INTLX	EW	5.64	6.39	3.77	1.51	0.83	1.31	13.43	***
Fn So T	Forester Value	FVALX	EV	1.54	1.79	2.98	4.91	0.75	1.06	12.17	**
F So T C	Forward Agrsv Grth	ACAIX	EA	11.95	15.81	10.04	3.36	1.92	2.23	14.88	***
F So Tn	Forward Extdn Mrkt	ASMCX	ESC	16.63	22.26	16.84	6.62	1.88	2.62	31.91	***
F So T	Forward Growth Allctn	AGALX	ELC	11.47	14.59	10.99	4.33	2.23	1.94	15.16	***
F So Tn	Forward Grth/Incm	AGIIX	ELC	9.50	11.38	8.82	3.56	1.98	1.48	15.96	***
F So T	Forward SmallCap Eqty	FFSCX	ESC	10.89	20.57	11.31	3.97	-1.27	3.07	17.82	***
Fn So Tn R2<7d	Gabelli Asset	GABAX	EV	19.63	22.43	16.49	6.20	0.83	2.45	58.37	*****
Fn So Tn R2<7d	Gabelli Equity Incm	GABEX	ELC	18.27	20.35	16.64	7.17	1.65	2.45	25.82	*****
Fn So Tn R2<7d	Gamco Gbl Convertible	GAGCX	EW	7.39	5.65	5.81	2.02	0.50	1.15	4.04	***
Fn So Tn R2<7d	Gamco Gbl Grth	GICPX	EW	15.70	21.51	14.95	4.18	1.46	2.66	29.18	***
Fn So Tn R2<7d	Gamco Gbl Telecomm	GABTX	EWR	15.09	13.86	9.83	3.63	4.87	3.57	21.98	***
Fn So Tn R2<7d	Gamco Gold	GOLDX	EG	-32.65	-27.51	-40.86	-27.59	-16.84	7.18	14.62	**
Fn So Tn R2<7d	Gamco Growth	GABGX	ELC	11.47	16.77	13.11	5.94	1.58	2.79	38.55	***
Fn So Tn R2<7d C	Gamco International	GIGRX	EW	9.79	16.66	10.43	1.80	1.89	2.77	22.65	***
Fn So Tn R2<7d	Gamco Small Cap Grth	GABSX	ESC	22.47	28.05	19.42	5.88	0.80	2.77	41.42	*****
ETF	Guggnhm Multi Ast In	CVY	EV	17.20	15.74	12.30	5.37	1.64	2.19	24.24	***
Fn So Tn R2<30d	Guinness China HK	ICHKX	EWR	-5.63	8.54	0.84	-8.53	-0.60	3.81	28.00	**
F S T	Harbor Capital Appreciation	HACAX	ELC	6.83	15.01	12.73	5.85	2.35	2.93	46.53	***
F S T R2<30d	Harbor Commodity	HACMX	EC	-1.87	-4.86	-5.40	-5.45	-2.55	3.31	6.89	**
Fn So Tn R2<60d	Harbor Intrntl	HIINX	EW	12.45	18.67	13.08	2.53	3.44	2.89	64.94	***
F S T R2<60d	Harbor Intrntl Growth	HAIGX	EW	9.47	19.15	12.87	2.84	1.57	2.84	12.32	***
F S T	Harbor Large Cap Value	HAVLX	EV	21.63	25.22	17.00	5.44	1.12	2.96	9.89	***
F S T	Harbor Mid Cap Grth	HAMGX	EMC	12.94	18.52	14.42	4.76	0.58	2.89	10.34	***
F S T C	Harbor Small Cap Grth	HASGX	ESC	16.65	20.04	18.73	4.22	-2.20	3.09	13.34	***
Fn So Tn R2<10d	Heartland Value	HRTVX	EV	10.07	15.67	8.73	1.72	-2.81	2.89	42.61	**
Fn So Tn R2<10d C	Heartland Value Plus	HRVIX	ESC	9.98	14.32	10.20	0.00	-3.94	3.03	31.43	**
Fn So Tn	Hennessey Crrnst Grth	HFCGX	EMC	17.09	19.72	11.79	3.59	-2.60	2.49	13.84	***
Fn So Tn	Hennessey Focus	HFCSX	EMC	20.54	26.82	18.56	8.89	2.86	2.58	56.45	*****
Fn So Tn	Hennessey Gas Utility	GASFX	EA	23.43	18.83	17.91	13.03	4.39	2.79	26.18	*****
Fn So Tn	Hennessey SmCap Fin	HSFNX	EA	21.71	25.08	13.50	4.90	-1.83	3.24	22.04	***
Fn So Tn	Hennsler Eqty	HEQFX	ELC	8.47	11.66	11.96	4.81	1.01	2.28	15.03	***
Fn So Tn R1<30d	Hodges Fund	HDFMX	EMC	23.45	28.64	25.47	11.73	0.86	3.23	26.95	*****
F S Tn R2<30d	Homestead Small Co	HSCSX	ESC	18.34	21.91	16.27	3.89	-1.99	2.70	29.62	***
F S Tn R2<30d	Homestead Value	HOVLX	EV	18.71	22.22	19.68	7.11	-0.20	2.70	39.18	*****
F S T R1.5<60d	Hussman Strtg Grth	HSGFX	EMC	-8.55	-7.10	-4.30	-1.05	-0.77	1.52	10.37	**
Fn So Tn	Icon Consumer Stpl	ICLEX	EA	19.52	12.61	14.38	9.12	2.43	2.36	11.39	***
Fn So Tn	Icon Health	ICHCX	EA	27.62	22.58	18.47	10.44	2.68	2.86	20.31	*****

Equity Funds Alphabetically

Legend	Fund Name	Symbol	Style	12m	9m	6m	3m	1m	V	NAV	Rank
Fn So Tn	Icon Informtn Tech	ICTEX	EA	-3.09	1.97	3.50	-1.34	-1.99	3.33	10.34	***
F So Tn	ING Corp Leaders	LEXCX	EGI	20.11	17.57	14.59	6.71	1.01	2.29	28.13	****
Fn So Tn R2<30d	Intrepid All Cap	ICMCX	EV	11.16	14.62	9.44	3.94	-0.19	2.11	10.56	***
Fn So Tn R2<30d	Intrepid Small Cap	ICMAX	ESC	8.07	10.45	5.66	1.66	-0.91	1.47	15.30	***
ETF	iShares Canada	EWC	EW	0.97	7.99	-0.34	-2.94	-1.72	2.64	28.02	**
ETF	iShares China	FXI	EW	2.22	10.56	2.81	-8.99	2.19	4.86	37.74	**
ETF	iShares Cohen&Str REIT	ICF	ERE	15.59	12.40	16.73	10.08	7.12	2.80	88.32	***
ETF	iShares DJ Slct Div	DVY	EGI	19.85	17.39	15.32	9.86	3.26	2.15	65.47	*****
ETF	iShares EAFE Indx	EFA	EW	19.27	25.22	16.85	5.02	5.02	3.41	61.94	***
ETF	iShares Emrg Mrkt Stk	EEM	EW	4.47	11.36	5.87	-2.10	1.22	3.01	43.29	**
ETF	iShares Europe 350	IEV	EW	17.85	23.16	12.45	0.97	4.51	3.74	41.50	***
ETF	iShares Gold	IAU	EG	-11.58	-8.72	-14.38	-11.42	-7.54	2.91	14.35	**
ETF	iShares Latin Amr	ILF	EW	-2.71	4.30	3.56	-4.75	-0.73	3.40	43.33	**
ETF	iShares Mexico	EWX	EW	18.46	16.71	10.68	-1.73	-3.00	4.42	72.35	**
ETF	iShares Prfrd	PFF	EGI	11.08	8.11	4.69	2.73	1.05	1.09	40.77	*****
ETF	iShares REIT	IYR	ERE	19.35	15.56	17.19	10.13	5.73	2.60	73.46	*****
ETF	iShares Russel 2000	IWM	ESC	17.87	21.95	16.60	5.34	-0.35	3.01	94.10	***
ETF	iShares Russel Micro	IWC	ESC	18.31	21.12	16.20	5.93	-0.05	3.29	58.63	***
ETF	iShares Russel MidVal	IWS	EV	23.41	26.03	19.76	7.36	1.32	2.71	57.75	*****
ETF	iShares Silver	SLV	EG	-22.09	-13.50	-24.98	-22.93	-14.47	6.50	23.46	**
ETF	iShares Slct Div	IDV	ELC	19.43	21.55	12.74	4.07	5.65	3.51	36.08	***
Fn So Tn	Janus	JANSX	ELC	10.83	14.73	11.76	5.70	1.40	2.51	34.68	***
Fn So Tn	Janus Contrarian	JSVAX	EMC	21.30	27.72	21.91	7.33	0.41	2.95	16.99	*****
Fn So Tn	Janus Enterprise	JAENX	EMC	13.93	18.71	16.00	3.58	-0.11	2.39	72.09	***
Fn So Tn	Janus Gbl Life Science	JAGLX	EWR	28.24	28.02	23.30	11.02	4.17	3.29	35.76	*****
Fn So Tn	Janus Gbl Real Estate	JERTX	ER	20.62	18.35	13.05	7.48	4.70	2.61	11.35	***
Fn So Tn	Janus Gbl Select	JORNX	EW	2.90	21.12	15.89	3.01	1.67	3.67	10.96	**
Fn So Tn	Janus Gbl Tech	JAGTX	EWR	8.34	15.63	12.43	4.55	0.65	2.98	20.22	***
Fn So Tn	Janus Growth & Income	JAGIX	EGI	17.35	20.41	17.17	9.14	3.07	2.89	38.99	***
Fn So Tn	Janus Overseas	JAOSX	EW	3.34	21.77	12.75	-1.28	5.37	4.87	35.35	**
Fn So Tn R2<90d	Janus Perkins Gbl Value	JGVAX	EW	18.74	17.97	14.84	7.82	4.15	2.46	13.79	*****
Fn So Tn	Janus Research	JAMRX	ELC	13.15	19.18	15.16	6.17	1.44	2.67	35.97	***
Fn So Tn C	Janus Twenty	JAVLX	EMC	10.41	13.80	10.48	5.16	2.16	2.66	66.61	***
Fn So Tn	Janus Venture	JAVTX	ESC	14.85	19.59	16.72	6.30	1.77	2.79	61.44	***
Fn So Tn	Janus Worldwide	JAWWX	EW	16.49	24.76	16.64	3.47	1.17	3.11	51.90	***
Fn So Tn	Jensen Qlty Grth	JENSX	ELC	16.50	19.87	16.25	6.13	1.52	2.53	33.42	***
F So T R2<90d	Kalmar ValueSmCap	KGSCX	ESC	9.61	18.73	14.50	3.53	-1.34	2.83	17.62	***
Fn So T R2<30d	Kinetics Internet	WWWF	EA	23.33	25.43	15.45	5.64	1.68	2.85	48.54	*****
Fn So T R2<30d	Kinetics Intrntl	WWWEX	EW	21.30	27.90	16.37	5.17	3.93	2.90	5.29	*****
Fn So T R2<30d	Kinetics Paradigm	WWNPX	EA	22.48	28.88	18.15	9.24	4.98	3.30	28.26	*****
Fn So T R2<30d	Kinetics SmCap Opp	KSCOX	ESC	31.57	39.92	28.79	12.44	5.03	3.66	31.09	*****
F So Tn R2<30d	Laudus Intrntl	SWOIX	EW	19.28	25.35	16.59	5.03	3.63	3.07	21.70	***
Fn So Tn R1<30d C	Lazard Emrg Mkt Eqty	LZOEX	EWR	6.60	10.94	6.33	-0.89	1.11	3.25	20.00	**
Fn So Tn R1<30d	Lazard Intl Eqty	LZIOX	EW	17.68	20.31	14.09	3.73	3.53	3.29	16.11	***
Fn So Tn R1<30d	Lazard Mid Cap	LZMOX	EW	8.54	17.51	16.85	6.41	1.01	2.58	13.94	***
Fn So Tn R1<30d	Lazard Small Cap Open	LZCOX	ESC	13.73	20.64	15.79	4.84	-0.97	2.62	14.30	***
T	Legg Mason Emrg Mrkt	LMEMX	EW	0.65	8.23	4.59	-3.37	1.44	3.35	20.38	**
T	Legg Mason Intl Eqty	LMGEX	EW	15.50	21.33	15.33	5.04	5.04	3.15	13.34	***
T	Legg Mason Opp	LMOPX	EMC	45.46	54.89	36.09	13.94	4.71	5.31	12.67	*****
T	Legg Mason Spcl Invest	LMASX	ELC	14.75	24.84	18.77	5.30	-0.17	3.07	34.37	***
T	Legg Mason Value Trust	LMVTX	EV	16.25	21.84	16.89	5.49	1.05	2.93	48.02	***
Fn So Tn	Leuthold Grizzly Short	GRZZX	EC	-19.75	-22.25	-16.56	-5.11	-0.53	3.59	9.47	**
F So T R1<30d	LKCM Aquinas Grth	AQEGX	ELC	5.37	11.22	9.20	2.18	-1.05	2.69	19.71	**
F So T R1<30d	LKCM Aquinas Small Cap	AQBLX	ESC	2.41	8.72	7.05	-1.42	-3.66	3.01	7.64	**
F So T R1<30d	LKCM Aquinas Value	AQEIX	EV	16.99	22.61	15.65	6.24	1.39	2.68	16.01	***
F S T R1<30d	LKCM SmCap	LKSCX	ESC	3.93	10.62	8.72	-0.54	-3.36	3.11	23.90	**
F S T	Longleaf Intl	LLINX	EW	25.36	34.37	17.57	1.98	2.79	4.76	15.47	***
F S T	Longleaf Partners	LLPFX	EV	15.85	19.36	11.01	1.25	-1.19	3.37	29.11	***
F S T C	Longleaf Small Cap	LLSCX	ESC	27.40	23.36	16.70	6.36	0.68	2.81	32.59	*****
Tn	Madison Mosaic Investors	MINVX	EV	18.21	19.48	14.99	5.81	1.90	2.42	20.95	*****
Tn	Madison Mosaic Mid Cap	GTSGX	EMC	13.05	17.12	11.17	2.33	-1.66	2.19	13.38	***
F S T	Mairs & Power Growth	MPGFX	EGI	20.42	21.84	17.19	5.27	0.36	2.61	94.32	*****
Fn So Tn	Managers Brandywine Mid	BWAFX	EMC	0.83	11.29	11.45	2.13	-0.97	2.82	8.14	**
Fn So Tn	Managers Micro Cap	MMCFX	ESC	14.46	22.13	16.49	7.90	-0.72	3.64	40.02	***
Fn So Tn	Managers Special Equity	MGSEX	ESC	8.13	14.07	13.17	4.96	-1.06	2.96	67.04	***
Fn So Tn R1<60d	Marketfield	MFLDX	EC	10.68	11.49	7.90	0.42	0.12	1.50	16.68	***
Fn So Tn R2<30d	Marsico 21st Centr	MXXIX	ELC	8.70	16.86	15.92	7.59	2.65	2.84	15.87	***
Fn So Tn R2<30d	Marsico Focus	MFOCX	ELC	11.28	18.37	18.06	9.54	3.36	2.97	19.97	***
Fn So Tn R2<30d	Marsico Global	MGLBX	EW	11.32	22.01	15.85	7.65	3.56	3.40	13.08	***
Fn So Tn R2<30d	Marsico Growth	MGRIX	ELC	9.42	16.47	15.92	7.68	2.40	2.74	23.00	***

Equity Funds Alphabetically

Legend	Fund Name	Symbol	Style	12m	9m	6m	3m	1m	V	NAV	Rank
Fn So Tn R2<30d	Marsico Intrntl Opp	MIOFX	EW	9.56	18.40	12.63	2.55	1.66	2.87	14.09	***
Fn So Tn R1<60d	Matrix Ad Value	MAVFX	EV	10.64	20.19	16.63	6.61	2.18	3.47	47.25	***
Fn So Tn R2<90d	Matthews Asia Dividend	MAPIX	EW	23.03	24.42	17.48	10.06	5.28	2.80	16.34	*****
Fn So Tn R2<90d	Matthews Asia Grth	MPACX	EW	22.48	28.04	19.80	12.51	6.59	3.04	20.87	*****
Fn So Tn R2<90d	Matthews Asia GrthIncm	MACSX	EW	22.66	21.66	12.86	6.56	3.71	2.72	20.15	*****
Fn So Tn R2<90d	Matthews China	MCHFX	EWR	-1.29	10.67	3.75	-6.02	0.18	3.35	22.80	**
Fn So Tn R2<90d	Matthews India	MINDX	EWR	14.20	20.33	5.91	1.01	5.20	4.44	18.01	**
Fn So Tn R2<90d	Matthews Japan	MJFOX	EWR	27.89	33.81	30.35	23.59	10.91	3.41	15.56	*****
Fn So Tn R2<90d	Matthews Korea	MAKOX	EWR	11.47	14.94	3.96	1.66	2.04	3.18	5.51	**
Fn So Tn R2<90d	Matthews Pacific Tiger	MAPTX	EWR	16.22	20.62	11.23	4.01	3.43	2.67	25.96	***
Fn So Tn	Merger Fund	MERFX	EC	2.69	2.69	2.88	1.14	0.25	0.58	15.91	***
F S T R2<60d C	Meridian Growth	MERDX	EMC	8.98	17.63	12.80	3.03	-0.66	2.57	43.52	***
F S T R2<60d C	Meridian Value	MVALX	EV	16.34	18.08	14.93	3.85	-0.99	2.34	36.15	***
Fn So Tn R2<30d	Metzler/Payden Emrg Mrkt	MPYMX	EW	-2.52	9.68	0.32	-10.74	-0.68	4.96	21.94	**
Fn So Tn R1<30d	Midas	MIDSX	EG	-43.93	-25.33	-41.84	-29.05	-18.96	9.18	1.71	*
F So C	Monetta	MONTX	EMC	10.78	21.05	16.13	5.47	1.53	3.20	16.58	***
Fn So Tn	Muhlenkamp	MUHLX	EGI	16.51	20.19	17.07	6.08	2.14	2.80	59.67	***
Fn So Tn R2<60d	Needham Aggrsv Grwth	NEAGX	ESC	8.49	12.43	12.64	2.62	2.80	3.46	17.64	**
Fn So Tn R2<60d	Needham Grwth	NEEGX	ESC	10.54	16.27	15.64	4.98	0.90	2.98	37.13	***
F So T	Neubrgr Bermn Focus	NBSSX	ESC	20.44	21.24	14.53	6.71	0.52	2.75	25.30	***
F So T	Neubrgr Bermn Genesis	NBGNX	EMC	13.50	18.23	12.20	4.03	-1.14	2.06	37.43	***
F So T C	Neubrgr Bermn Guardian	NGUAX	ELC	18.09	20.63	17.56	6.95	-0.11	2.86	17.70	***
Fn So T	Neubrgr Bermn LrgCap Val	NPRTX	ELC	19.43	22.31	14.05	3.95	0.26	2.76	31.04	***
F So T C	Neubrgr Bermn MidCap Gr	NMANX	EMC	7.11	15.47	12.34	3.62	0.24	2.53	12.58	***
F So T C	Neubrgr Bermn MidCap Val	NBRES	EMC	19.70	23.14	18.60	7.58	0.73	2.70	16.60	*****
F So T C	Neubrgr Bermn SmlCap Gr	NBMIX	ESC	8.24	12.85	10.15	4.13	-1.58	3.21	21.16	**
F S T	Nicholas Equity Income	NSEIX	EGI	22.56	21.85	18.19	9.06	1.39	2.45	18.18	*****
F So T	Nicholas Fund	NICSX	ELC	21.54	26.96	18.00	7.60	0.91	2.68	55.51	*****
F S T	Nicholas II Income	NCTWX	EMC	11.34	18.65	13.84	3.92	-0.04	2.37	23.60	***
F S T	Nicholas Limited Edition	NCLEX	ESC	8.60	15.65	10.46	3.62	-2.35	2.89	22.89	**
Fn So Tn R2<30d	Northern Intrntl Eqty	NOIGX	EW	17.12	26.04	16.96	2.52	4.68	3.63	8.95	***
Fn So Tn	Northern LrgCap Eqty	NOGEX	ELC	12.69	12.65	9.60	3.99	1.14	2.75	16.93	***
Fn So Tn	Northern LrgCap Grth	NOEQX	ELC	6.22	11.67	10.69	3.80	0.80	2.76	26.51	**
Fn So Tn	Northern LrgCap Value	NOLVX	EV	16.98	19.68	15.20	7.16	2.21	2.88	11.08	***
Fn So Tn	Northern SmlCap Grth	NSGRX	ESC	18.50	21.76	16.63	5.30	-0.54	2.89	18.29	***
Fn So Tn	Northern SmlCap Value	NOSGX	ESC	17.29	21.77	16.07	5.52	-0.38	2.70	18.36	***
Fn So Tn	Oak Pin Oak Aggrsv Stk	POGSX	EA	13.40	16.73	13.68	4.95	1.06	2.96	37.11	***
Fn So Tn	Oak White Oak Grth Stk	WOGSX	ELC	10.64	17.24	11.89	1.67	-1.70	3.35	47.41	**
Fn So Tn	Oakmark	OAKMX	EV	18.34	21.01	14.86	5.70	1.88	2.73	54.18	***
Fn So Tn	Oakmark Global	OAKGX	EW	20.54	28.94	23.69	5.81	4.40	3.65	26.58	***
Fn So Tn	Oakmark International	OAKIX	EW	29.25	35.58	24.13	4.16	5.67	4.42	23.30	***
Fn So Tn R2<90d	Oakmark Intrntl Small Cap	OAKEX	EW	10.91	25.26	16.50	3.88	3.11	3.74	15.26	***
Fn So Tn R1<90d	Oberweiss Emerging Growth	OBEGX	ESC	6.26	15.02	9.45	5.69	-0.77	3.73	21.90	**
Fn So Tn R1<90d	Oberweiss Micro Cap	OBMCX	ESC	10.82	20.12	11.99	6.93	-1.15	3.74	13.73	**
Fn So Tn	Parnassus Eqty Incm	PRBLX	EGI	21.31	20.13	16.65	7.41	1.25	2.50	33.22	*****
Fn So Tn	Parnassus Fund	PARNX	ELC	17.29	20.37	14.71	1.99	1.37	3.50	43.56	***
Fn So Tn	Permanent Aggrsv Grwth	PAGRX	EA	20.26	26.80	18.08	3.08	-0.07	3.00	54.20	***
Fn So Tn R2<90d	Perritt Micro Cap Opp	PRCGX	ESC	13.35	23.20	16.78	3.13	-2.88	3.91	30.64	***
Fn So Tn	Pimco Stk Plus	PSTDX	ELC	23.28	20.62	15.80	8.77	2.87	2.87	10.05	*****
F S T R1<180d	Polaris Global Value	PGVFX	EW	20.98	26.76	17.89	7.69	3.03	3.36	17.36	***
F S Tn	Price Blue Chip Growth	TRBCX	ELC	9.09	15.12	12.87	4.99	1.38	2.85	50.03	***
F S Tn	Price Capital Opportunity	PRCOX	ELC	16.18	17.77	14.35	7.07	2.14	2.71	18.62	***
F S Tn R1<90d C	Price Diversfd SmlCap Grth	PRDSX	ESC	15.48	20.97	16.62	5.48	0.05	2.76	19.64	***
F S Tn	Price Dividend Growth	PRDGX	EGI	17.12	17.88	14.19	6.79	1.76	2.35	29.53	***
F S Tn R2<90d C	Price Emrg Mkt Stk	PRMSX	EW	6.02	11.61	4.71	-1.46	1.17	2.81	33.67	**
F S Tn	Price Equity Income	PRFDX	EGI	20.12	20.81	15.41	7.33	1.61	2.57	29.75	*****
F S Tn R2<90d	Price European Stock	PRESX	EWR	20.06	26.13	16.10	5.13	5.31	3.47	17.64	***
F S Tn R2<90d	Price Gbl LrgCap	RPGEX	EW	13.28	17.57	11.91	3.14	0.99	2.77	19.39	***
F S Tn R2<90d	Price Gbl Stk	PRGSX	EW	12.74	20.59	16.77	4.97	2.56	3.31	20.05	***
F S Tn	Price Growth & Income	PRGIX	EGI	14.45	17.13	13.42	6.20	1.82	2.43	25.14	***
F S Tn	Price Growth Stock	PRGFX	ELC	9.30	14.59	12.72	5.51	1.65	2.82	41.37	***
F S Tn R2<90d C	Price Intrntl Discovery	PRIDX	EW	16.07	24.43	13.38	5.45	2.91	3.06	50.30	***
F S Tn R2<90d	Price Intrntl Stock	PRITX	EW	11.10	17.77	10.31	1.68	2.37	2.80	15.11	***
F S Tn R2<90d	Price Japan	PRJPX	EWR	25.72	30.86	29.33	18.60	8.99	3.53	9.82	*****
F S Tn R2<90d	Price Latin America	PRLAX	EWR	3.39	11.35	5.46	-2.70	-0.24	3.49	37.87	**
F S Tn C	Price Mid Cap Growth	RPMGX	EMC	13.11	20.51	16.78	5.67	0.32	2.73	63.39	***
F S Tn C	Price Mid Value	TRMCX	EV	21.49	22.32	15.73	6.33	0.41	2.75	27.05	***
F S Tn	Price New America Growth	PRWAX	EMC	11.89	16.90	12.21	4.53	0.77	2.56	39.21	***
F S Tn R2<90d C	Price New Asia	PRASX	EWR	8.57	12.96	6.57	0.06	1.01	2.33	16.93	**
F S Tn C	Price New Era	PRNEX	EA	3.32	11.00	5.42	0.09	-2.06	3.40	43.76	**

Equity Funds Alphabetically

Legend	Fund Name	Symbol	Style	12m	9m	6m	3m	1m	V	NAV	Rank
F S Tn C	Price New Horizons	PRNHX	ESC	15.18	20.65	18.34	7.24	1.17	2.96	38.06	***
F S Tn R1<90d	Price REIT	TRREX	ERE	13.84	13.07	15.14	8.93	6.19	2.57	23.52	***
F S Tn C	Price Science & Technology	PRSCX	EA	1.64	15.30	16.39	4.02	1.81	3.92	29.76	**
F S Tn C	Price Small Cap Stock	OTCFX	ESC	17.02	20.57	16.56	5.71	-0.39	2.68	38.14	***
F S Tn R1<90d C	Price Small Cap Value	PRSVX	ESC	17.51	21.33	14.97	4.00	-0.62	2.36	43.18	***
F S Tn	Price Spectrum Growth	PRSGX	EMC	13.93	18.45	13.34	4.74	1.77	2.67	21.23	***
F S Tn	Price Value	TRVLX	EV	23.63	25.03	18.12	7.67	1.78	2.94	30.33	*****
Fn S T C	Primary Trend	PTFDX	EGI	10.06	9.87	6.67	4.88	1.71	2.24	12.47	***
F S T	Primecap Odys Agg Grth	POAGX	EMC	25.76	22.59	21.42	9.20	1.42	3.66	22.90	***
F S T	Primecap Odys Grth	POGRX	ELC	24.98	24.98	23.20	10.75	2.74	3.13	20.61	*****
Fn So Tn	Profunds Bear	BRPIX	EC	-17.23	-16.98	-13.95	-7.37	-2.25	2.80	13.45	**
Fn So Tn	Profunds Nasdaq 100	OTPIX	ELC	5.10	8.68	8.64	5.48	2.29	3.01	93.19	**
Fn So Tn	Profunds Rising Rates	RRPIX	EC	-12.89	2.20	-2.93	-8.06	-6.07	3.83	6.96	*
Fn So Tn	Profunds Shrt SmCap	SHPIX	EC	-19.52	-20.90	-16.48	-6.42	-0.66	3.14	5.98	*
Fn So Tn	Profunds Ultra Bear	URPIX	EC	-32.64	-31.99	-25.72	-14.14	-4.40	5.49	11.29	**
Fn So Tn	Profunds Ultra Bull	ULPIX	EA	30.52	34.56	28.27	13.70	3.54	5.15	61.67	***
Fn So Tn	Profunds Ultra Nas 100	UOPIX	EA	10.29	18.27	18.10	11.38	4.64	6.08	41.69	**
ETF	PS Agrcltr	DBA	EA	-3.92	-12.98	-9.37	-6.06	1.24	3.01	26.22	*
ETF	PS Commodity	DBC	EC	-7.53	-3.60	-4.68	-7.73	-3.81	3.48	26.27	*
ETF	PS Dynmc Mrkt	PWC	ELC	22.14	23.13	20.68	7.00	0.27	3.24	56.16	***
ETF	PS Dynmc OTC	PWO	ESC	9.26	15.20	18.55	8.84	2.22	3.11	55.31	***
ETF	PS Energy	DBE	EA	-7.42	4.45	1.21	-5.56	-4.91	4.46	27.68	**
ETF	PS Gold	DGL	EG	-12.98	-9.74	-15.16	-11.88	-7.86	3.00	50.20	*
ETF	PS High Yield Eqty	PEY	EMC	20.18	18.71	14.41	8.65	2.09	1.95	10.76	*****
ETF	PS Oil	DBO	EA	-14.54	3.24	4.24	-6.01	-4.44	5.22	25.80	*
ETF	PS QQQ	QQQ	ELC	7.32	10.31	9.75	6.00	2.54	3.07	70.72	**
ETF	PS Short Dow 30	DOG	EC	-15.13	-15.29	-13.66	-7.49	-2.09	2.51	30.02	*
ETF	PS Silver	DBS	EG	-23.52	-14.26	-25.84	-23.80	-15.00	6.69	41.24	*
Fn So Tn	Rainier Large Cap Eqty	RIMEX	ELC	9.12	15.45	12.35	4.56	0.69	2.59	29.11	***
Fn So Tn	Rainier Mid Cap Eqty	RIMMX	EMC	8.33	18.81	14.29	3.53	-0.74	2.67	48.14	***
Fn So Tn C	Rainier Small/Mid Cap Eqty	RIMSX	ESC	9.63	18.95	13.92	4.15	-0.89	2.78	40.18	***
Fn So Tn C	RBB Lng/Shrt Eqty	BPLEX	EC	11.98	10.89	8.16	3.00	-0.20	1.06	20.24	*****
Fn So Tn R1<60d	RBB SmCap II	BPSCX	ESC	19.29	21.31	12.48	2.95	-1.21	2.55	17.11	***
Fn So Tn	RBB Value	BPAVX	EV	17.72	21.65	17.04	6.76	1.71	2.80	17.85	***
Fn So T	Reynolds Blue Chip Growth	RBCGX	ELC	9.69	16.16	12.81	5.01	0.60	2.67	63.89	***
Fn So Tn R2<90d	Rice Hall James Micro	RHJSX	ESC	10.29	17.68	12.14	3.63	-1.74	3.34	21.43	**
Fn So Tn	Rice Hall James Mid Cap	RHJVX	EMC	5.96	19.18	16.64	2.28	-1.93	3.51	15.23	**
Fn So Tn	Rice Hall James Small Cap	RHJMX	ESC	11.29	21.22	13.98	4.65	-0.98	3.16	15.08	***
F So T	RidgeWorth Intrntl Eqty	STITX	EW	17.43	23.08	14.48	1.35	3.52	3.63	12.05	***
F So T	RidgeWorth MidCap Value	SMVTX	EMC	21.28	27.48	19.69	5.70	0.84	2.91	13.17	*****
Fn So Tn R1<179d	Royce Div Value	RYDVX	EV	16.51	22.62	15.16	3.73	0.37	2.49	8.06	***
Fn So Tn R1<179d	Royce Low Priced	RYLPX	ESC	-5.67	6.17	1.44	-3.52	-2.35	2.86	13.70	**
F S Tn R1<179d	Royce Micro Cap	RYOTX	ESC	-1.76	7.80	3.17	-3.41	-2.84	3.12	14.71	**
F S Tn R1<179d	Royce Opportunity	RYPNX	ESC	18.92	27.02	19.72	4.61	-1.11	3.41	13.39	***
F S Tn R1<179d	Royce Pennsylvania	PENNX	EA	13.00	20.53	14.06	2.38	-1.50	2.66	12.48	***
F S Tn R1<179d C	Royce Premier Invst	RYPRX	EA	4.98	14.82	6.81	-1.44	-2.64	2.58	19.90	**
F S Tn R1<179d C	Royce Special Eq	RYSEX	ESC	13.27	17.33	12.95	3.49	-0.65	2.25	22.81	**
Fn So Tn R1<179d	Royce Total Rtrn	RYTFX	EMC	17.67	21.89	14.62	4.70	0.46	2.28	15.23	*****
Fn So Tn R1<179d	Royce Value Ser	RYVFX	ESC	4.72	15.91	8.36	1.20	0.94	2.57	11.80	**
Fn So T	Rydex Invr Gov Bond	RYJUX	EC	-8.94	3.09	-1.53	-6.18	-5.01	3.08	8.35	*
Fn So T	Rydex Invr Nasdaq 100	RYAIX	EC	-9.82	-11.23	-10.01	-6.15	-2.73	3.17	8.54	*
Fn So T	Rydex Invr S&P 500	RYURX	EC	-16.75	-16.69	-13.79	-7.30	-2.19	2.77	20.57	*
Fn So T	Rydex Nasdaq 100	RYOCX	ELC	6.27	9.36	9.11	5.67	2.34	3.04	18.81	**
Fn So T	Rydex Nova	RYNVX	EA	24.17	26.12	21.15	10.40	2.68	3.93	32.91	***
Fn So T	Rydex Precious Metals	RYPMX	EG	-30.21	-23.02	-37.91	-25.55	-18.35	7.17	42.17	*
Fn So Tn	Schwartz Value	RCMFX	ESC	8.49	13.31	12.03	3.49	-1.92	2.39	25.51	***
ETF	Select SPDR Cnsmr Disc	XLY	EA	21.71	27.06	19.66	9.26	3.04	3.06	54.61	*****
ETF	Select SPDR Cnsmr Stpl	XLP	EA	23.44	17.61	17.57	11.59	2.94	2.57	40.94	*****
ETF	Select SPDR Dividend	SDY	EGI	22.50	21.92	17.87	9.24	1.91	2.19	67.25	*****
ETF	Select SPDR Enrgy	XLE	EA	11.95	13.97	9.85	1.64	-1.31	3.57	78.27	**
ETF	Select SPDR Financs	XLF	EA	23.46	29.34	18.75	7.96	2.69	3.80	18.70	***
ETF	Select SPDR Health	XLV	EA	28.73	25.11	19.40	10.78	2.87	2.69	47.33	*****
ETF	Select SPDR Intl	XLI	EA	14.58	17.87	14.93	3.87	-0.74	2.23	41.45	***
ETF	Select SPDR Matrls	XLB	EA	10.43	15.61	11.20	1.78	0.94	2.49	39.55	***
ETF	Select SPDR Technlgy	XLK	EA	5.14	6.75	7.75	5.19	1.75	2.97	30.80	**
ETF	Select SPDR Utilities	XLU	EA	20.88	12.63	14.53	14.24	5.96	2.69	41.43	*****
So Tn C	Selected American Shares	SLASX	ELC	14.86	18.28	14.52	6.03	1.93	2.35	46.94	***
So Tn C	Selected Special Shares	SLSSX	EMC	9.80	17.24	10.93	-0.10	0.73	2.69	9.61	***
Fn So Tn R2<29d	SIT Dvlpng Mrkts Grth	SDMGX	EWR	-0.17	10.66	4.96	-2.61	0.56	2.71	17.89	**
Fn So Tn R2<29d	SIT International Growth	SNGRX	EW	14.21	19.94	13.24	3.68	3.82	2.86	15.76	***

Equity Funds Alphabetically

Legend	Fund Name	Symbol	Style	12m	9m	6m	3m	1m	V	NAV	Rank
Fn So Tn R2<29d	SIT Large Cap	SNIGX	ELC	9.35	13.29	11.12	4.49	0.85	2.72	47.66	***
Fn So Tn R2<29d	SIT Mid Cap	NBNGX	EMC	6.90	15.56	11.79	1.28	-0.46	2.90	17.45	***
Fn So Tn R2<29d	SIT Small Cap Grth	SSMGX	ESC	6.72	14.32	11.38	1.47	-0.26	2.76	48.94	***
Fn So Tn R2<30d	Skyline Special Equity II	SKSEX	ESC	23.74	30.89	23.89	7.03	-1.50	3.41	30.13	***
Fn So Tn	Sound Shore	SSHFX	EV	22.10	26.99	19.63	7.96	3.34	2.99	40.26	****
ETF	SPDR DJ Gbl Titans	DGT	EW	15.49	20.72	14.57	3.66	3.32	2.84	60.96	***
ETF	SPDR DJ Industrials	DIA	ELC	15.18	16.26	14.75	7.55	1.96	2.44	148.02	***
ETF	SPDR Euro Stoxx 50	FEZ	EW	21.62	27.39	11.37	-1.61	6.81	5.19	35.29	***
ETF	SPDR Gold	GLD	EG	-11.81	-8.77	-14.42	-11.43	-7.57	2.90	142.77	***
ETF	SPDR S&P 500	SPY	ELC	16.70	17.93	14.28	7.14	1.92	2.66	159.68	***
ETF	SPDR Wlsh REIT	RWR	ERE	17.05	14.14	17.88	10.42	6.78	2.82	82.89	***
Fn So Tn	SSgA Emrg Mrkt	SSEMXX	EWR	3.42	11.02	6.58	-2.61	1.08	3.10	20.50	***
Fn So Tn	SSgA Intl Stock	SSAIX	EW	17.08	24.20	15.99	2.77	5.91	3.70	10.03	***
Fn So Tn	SSgA REIT	SSREX	ERE	14.60	11.90	16.50	10.32	6.72	2.88	14.58	***
Fn So Tn	SSgA Small Cap	SVSCX	ESC	21.36	25.86	18.62	6.56	-0.34	3.07	29.24	***
F S T R1.5<120d	Stratton Multicap	STRGX	ELC	15.80	21.11	14.05	4.71	-0.59	2.91	42.02	***
F S T R1.5<120d	Stratton REIT	STMDX	ERE	20.69	17.61	18.88	10.96	5.31	2.67	34.52	****
F S T R1.5<120d	Stratton Small Cap Value	STSCX	ESC	20.64	24.22	17.52	6.55	-0.90	2.69	62.95	****
Fn So Tn	TCW Concrttd Value	TGFVX	EV	18.76	23.57	18.46	5.51	2.24	2.79	14.16	***
Fn So Tn	TCW Dividend Fcsd	TGIGX	EGI	21.56	23.30	17.53	6.83	0.58	3.06	13.89	***
Fn So Tn	TCW Growth Eqty	TGDNX	ELC	5.59	22.51	17.82	7.86	2.95	3.45	16.05	***
Fn So Tn	TCW Slct Eqty	TGCNX	ELC	8.75	15.26	11.40	2.43	-0.14	2.84	20.67	***
Fn So Tn C	TCW SmallCap Grth	TGSNX	ESC	-0.88	13.22	9.77	3.84	-0.39	3.61	28.10	***
Fn So Tn	TCW Val Opp	TGVNX	EMC	19.87	24.78	18.77	5.76	0.43	3.05	23.30	***
Fn So Tn	Teton Westwood Eqty	WESWX	EV	18.05	20.29	15.66	7.72	2.73	2.71	11.30	***
Fn So Tn R1	Teton Westwood Mmites	WMMCX	ESC	21.80	27.19	19.68	6.46	0.43	3.01	18.79	****
Fn So Tn	Teton Westwood Small Cap	WESCX	ESC	8.28	18.78	13.74	1.42	-3.71	3.20	17.14	***
Fn So Tn R2<30d	The Arbitrage	ARBFX	EC	-0.60	-0.22	2.75	-0.24	-0.24	0.68	12.46	***
F S T R1<60d	Third Ave REIT	TAREX	ERE	22.88	22.63	12.74	5.47	4.23	3.09	27.57	***
F S T R1<60d	Third Ave SmallCap	TASCX	ESC	18.26	22.45	15.22	4.38	-0.52	2.34	24.76	****
F S T R1<60d	Third Ave Value	TAVFX	EV	22.33	22.57	15.17	4.21	3.34	3.44	54.44	***
Fn Tn R2<60d	Thomas White Amrcn	TWAOX	EMC	12.79	18.62	16.04	5.04	0.98	2.17	15.41	****
Fn So Tn R2<60d	Thomas White Intrntl	TWWDX	EW	15.36	19.49	12.93	3.37	2.92	2.82	18.69	***
Fn So Tn	Thompson LargeCap	THPGX	EGI	17.13	24.71	18.18	6.02	0.92	3.22	39.47	***
Fn So Tn R2<90d	Tocqueville Delafield	DEFIX	ESC	10.00	19.92	15.25	1.12	-1.73	2.56	32.40	***
Fn So Tn R2<90d	Tocqueville Fund	TOCQX	EMC	15.00	17.17	13.38	6.23	2.32	2.53	26.95	***
Fn So Tn R2<90d	Tocqueville Gold	TGLDX	EG	-33.74	-25.81	-38.41	-25.44	-17.06	6.81	43.71	***
Fn So Tn R2<90d	Tocqueville Intl Value	TIVFX	EW	14.15	20.31	14.63	2.88	4.43	2.88	13.20	***
F So T	Torray	TORYX	EGI	14.11	16.42	15.19	7.40	0.49	2.44	37.20	***
Fn So Tn	Turner Emrg Grth	TMCGX	ESC	9.58	16.78	11.93	5.11	-0.38	2.80	52.65	***
Fn So Tn	Turner Midcap Gr	TMGFXX	EMC	2.87	13.36	11.85	3.52	-0.59	2.78	37.08	***
Fn So Tn	Turner Small Cap Growth	TSCEX	ESC	10.70	17.76	13.83	4.59	-1.59	2.83	37.14	***
F S T R2<60d	Tweedy Browne Global Value	TBGVX	EW	20.00	18.39	14.86	4.97	1.71	2.46	25.54	***
F S T	Tweedy Browne Value	TWEBX	EV	19.63	17.98	15.04	6.17	1.57	2.40	22.02	****
Fn So Tn	UMB Scout Interntl	UMBWX	EGI	13.96	20.10	12.48	2.98	2.53	2.93	35.26	***
Fn So Tn R.05<7d	US Gbl Invst Amrcn Eqty	GBTFX	EGI	11.02	16.94	11.81	6.31	1.51	2.49	28.30	***
Fn So Tn R.05<7d	US Gbl Invst Gbl Gold	USERX	EG	-29.15	-23.51	-37.29	-24.93	-16.18	6.55	8.34	***
Fn So Tn R.05<7d	US Gbl Invst Holmes	ACBGX	ELC	2.29	12.40	7.75	4.11	-0.83	2.94	20.26	***
Fn So Tn R.05<7d	US Gbl Invst World PMtl	UNWPX	EG	-37.23	-27.27	-39.92	-28.79	-17.47	6.84	7.84	***
Fn So Tn R.05<7d	US Gbl Invstrs China Rgn	USCOX	EWR	7.38	18.89	10.36	-1.24	4.05	3.76	7.96	***
Fn So Tn R.05<7d	US Gbl Invstrs Global Rsrcs	PSPFX	EWR	-0.76	6.91	-1.76	-5.88	-5.32	3.18	9.61	***
Fn So Tn	Value Line Emrg Opp	VLEOX	ESC	17.39	22.27	15.79	5.72	-0.07	2.30	42.31	****
Fn So Tn	Value Line Fund	VLIFX	EGI	11.61	17.33	13.83	4.86	0.53	2.35	11.44	***
Fn So Tn	Value Line Incm Grth	VALIX	EGI	12.92	13.01	9.76	5.00	0.97	1.62	9.38	****
Fn So Tn	Value Line Larger Cos	VALLX	EA	11.16	15.17	12.14	4.30	0.98	2.43	21.58	***
Fn So Tn	Value Line Premier Grth	VALSX	EMC	13.20	18.57	14.14	4.15	0.76	2.45	31.65	***
F S T	Vanguard 500 Index	VFINX	EGI	16.72	17.68	14.33	7.13	1.91	2.67	147.37	***
F S T	Vanguard Cap Value	VCVLX	EGI	21.81	30.56	24.36	8.07	2.55	3.58	12.85	***
F S T C	Vanguard Convertible Securities	VCVSX	EGI	13.59	14.10	10.56	3.37	1.12	1.85	13.57	***
F S T	Vanguard Dev Mrkt	VDMIX	EW	19.57	25.25	16.67	5.11	5.00	3.47	10.70	***
F S T	Vanguard Div Grth	VDIGX	ELC	17.33	17.65	15.40	8.68	3.09	2.28	19.04	****
F S T	Vanguard Equity Income	VEIPX	EGI	19.40	18.18	15.21	8.38	2.66	2.48	27.41	****
F S T	Vanguard European Index	VEURX	EWR	18.17	23.71	12.87	1.32	4.32	3.78	27.55	***
F S T	Vanguard Explorer	VEXPX	ESC	15.09	23.52	19.08	6.00	0.56	3.02	89.97	***
F S T	Vanguard Extended Mrkt Index	VEXMX	EMC	18.45	24.36	18.66	6.38	0.60	2.85	52.07	***
F S T	Vanguard Global Eqty	VHGX	EW	17.91	23.22	15.65	5.72	2.42	2.80	20.71	***
F S T	Vanguard Grth Eqty	VGEQX	ELC	8.43	15.51	12.83	5.23	1.12	2.72	13.49	***
F S T	Vanguard Grwth & Incm	VQNPX	EGI	16.78	17.35	14.16	7.07	1.70	2.75	34.07	***
F S T	Vanguard High Yld Dividend	VHDYX	EV	20.18	17.61	15.00	9.04	2.95	2.47	22.36	****
F S T	Vanguard Intl Expl	VINEX	EW	13.68	24.35	15.17	5.25	3.50	2.98	16.25	***

Equity Funds Alphabetically

Legend	Fund Name	Symbol	Style	12m	9m	6m	3m	1m	V	NAV	Rank
F S T	Vanguard Intl Growth	VWIGX	EW	12.52	19.71	12.16	1.44	2.77	3.00	20.41	***
F S T	Vanguard Intl Value	VTRIX	EW	17.49	23.01	15.08	3.06	4.64	3.42	33.39	***
F S T	Vanguard MidCap Index	VIMSX	EMC	17.97	24.07	19.36	7.57	1.70	2.73	25.79	*****
F S T	Vanguard Morgan Growth	VMRGX	ELC	9.60	15.81	13.80	5.96	1.57	2.75	22.03	***
F S T	Vanguard Pacific Index	VPACX	EWR	21.54	27.06	23.31	11.48	5.43	3.20	11.65	*****
S T	Vanguard PRIMECAP	VPMCX	ELC	23.76	24.50	21.08	9.50	2.45	2.81	81.27	*****
F S T	Vanguard REIT	VGSIX	ERE	18.93	15.76	19.07	11.15	6.70	2.85	25.00	*****
F S T	Vanguard Slctd Value	VASVX	EV	21.30	23.82	16.46	8.27	1.48	2.55	23.96	*****
F S T	Vanguard SmlCap Grwth	VISGX	ESC	16.56	21.58	16.66	5.35	-0.46	3.06	27.98	***
F S T	Vanguard SmlCap Index	NAESX	ESC	19.22	23.39	17.80	6.23	0.14	2.86	43.76	***
F S T	Vanguard Strtg Eqty	VSEQX	EMC	20.06	25.11	19.84	7.47	0.82	2.85	24.60	*****
F S T	Vanguard US Growth	VWUSX	ELC	10.86	17.21	14.09	4.51	0.47	2.95	23.42	***
F S T	Vanguard US Value	VUVLX	EV	23.24	23.79	18.83	7.49	1.04	3.00	13.63	*****
F S T	Vanguard Value Index	VIVAX	EV	20.36	20.80	16.21	7.78	2.15	2.73	26.14	***
F S T	Vanguard Windsor	VWNDX	EV	20.98	23.89	17.90	5.96	1.18	2.90	17.08	***
F S T	Vanguard Windsor II	VWNFX	ELC	18.39	19.03	14.36	7.46	2.19	2.66	33.12	***
ETF	Vngrd Emrg Mrkt	VWO	EW	5.31	12.02	6.67	-1.66	2.00	3.07	43.76	**
ETF	Vngrd Large Cap	VV	ELC	16.76	18.45	14.71	7.13	1.99	2.67	73.17	***
ETF	Vngrd Small Cap	VB	ESC	19.51	23.70	17.89	6.27	0.30	2.90	91.42	***
ETF	Vngrd TTL Stock	VTI	ELC	17.10	18.97	15.10	6.97	1.61	2.69	82.26	***
Fn So Tn R2<60d C	Wasatch Emrg Mrkt SC	WAEMX	EW	14.86	21.30	14.86	5.57	3.06	2.66	3.03	***
Fn So Tn R2<60d	Wasatch Growth	WGROX	ELC	15.66	17.87	11.08	2.03	-0.15	2.20	46.30	***
Fn So Tn R2<60d	Wasatch Micro Cap	WMICX	ESC	7.07	12.01	8.02	3.95	-2.10	3.26	6.06	**
Fn So Tn R2<60d C	Wasatch SmCap Grth	WAAEX	ESC	12.44	15.46	12.11	3.95	-0.16	2.35	44.98	***
Fn So Tn R2<60d	Wasatch SmCap Val	WMCVX	ESC	15.06	21.37	17.82	5.23	0.00	2.56	4.43	***
Fn So Tn R2<60d	Wasatch Ultra Grth	WAMCX	ESC	7.58	12.72	10.94	2.27	-1.17	3.05	21.18	**
Fn So Tn R2<60d	Wasatch World Innvtrs	WAGTX	EW	12.45	13.90	11.83	4.31	1.20	2.61	20.32	***
F So Tn	Weitz Hickory	WEHIX	ESC	17.97	17.85	12.84	4.51	-0.24	2.10	50.10	*****
Fn So Tn	Weitz Partners Val	WPVLX	EV	21.40	20.98	16.59	6.92	0.79	2.26	27.97	*****
Fn So Tn	Weitz Value Fund	WVALX	EV	17.56	18.23	16.10	7.99	0.47	2.24	38.79	*****
Fn So Tn C	Wells Fargo Common Stock	STCSX	EMC	15.41	21.76	14.26	1.58	-1.57	3.14	22.54	***
Fn So Tn	Wells Fargo Discovery	STDIX	EA	12.58	20.66	17.82	7.92	1.48	3.16	28.88	***
Fn So Tn	Wells Fargo Entrprs	SENTX	EMC	11.60	21.70	17.69	8.89	2.31	3.15	42.51	***
Fn So Tn C	Wells Fargo Growth	SGROX	ELC	3.96	11.91	8.83	1.27	-0.40	3.01	42.27	**
Fn So Tn	Wells Fargo Large Co	SDVIX	EGI	15.83	18.10	13.63	5.95	1.38	2.65	15.48	***
Fn So Tn	Wells Fargo LargeCap Gr	STRFX	ELC	3.13	11.47	10.77	3.89	0.85	2.90	36.63	**
Fn So Tn	Wells Fargo MidCap Dis	SMCDX	EMC	24.38	29.45	21.28	7.57	0.21	2.83	28.01	*****
Fn So Tn	Wells Fargo Opportunity	SOPFX	ELC	12.81	20.42	16.11	4.12	0.25	2.66	44.00	***
Fn So Tn	Westcore Blue Chip	WTMVX	ELC	18.50	18.41	15.74	7.86	1.70	2.51	13.72	*****
Fn So Tn	Westcore Growth	WTEIX	EGI	7.95	12.15	10.17	4.01	1.06	2.79	15.30	**
Fn So Tn R2<90d C	Westcore Intrntl	WTIFX	EW	10.22	17.37	10.35	3.16	0.96	2.79	18.93	***
Fn So Tn	Westcore Midco Growth	WTMGX	EMC	8.97	22.55	17.09	6.21	1.59	3.22	7.01	***
Fn So Tn	Westcore Select	WTS LX	EMC	-3.31	16.63	17.91	7.53	2.28	3.53	19.29	**
Fn So Tn	Westcore Small Cap	WTSX	ESC	6.52	14.04	11.42	3.37	-0.85	2.64	29.15	***
Fn So Tn	Westport Growth	WPFrx	EMC	9.77	14.85	12.52	3.47	0.50	2.36	28.32	***
Fn So Tn R1<60d	William Blair Growth Shares	WBG SX	EMC	10.49	15.58	12.78	3.63	-0.98	2.89	13.14	***
Fn So Tn R2<60d C	William Blair Intrntl Grth	WBIGX	EW	16.10	21.07	14.03	4.77	3.55	2.93	24.18	***
Fn So Tn	Wilshire Target Small Co Grth	DTSGX	ESC	17.46	20.45	16.45	5.72	-0.64	2.89	20.32	***
Fn So Tn	Wilshire Target Small Co Value	DTSVX	ESC	20.36	23.19	16.69	6.10	-0.10	2.78	19.65	***
Fn So Tn R2<60d	Wintergreen Fund	WGRNX	EW	13.26	16.18	13.03	4.85	1.09	2.04	16.63	***
Fn So Tn R2<90d	Wright Intl Blue	WIBCX	EW	12.99	18.87	11.76	2.69	5.04	3.51	15.01	***
Fn So Tn	Wright Major Blue Eqty	WQCEX	ELC	7.64	15.57	14.84	8.01	2.65	2.66	14.32	***
Fn So Tn	Wright Selected Blue Chip	WSBEX	ELC	18.99	27.17	21.34	8.38	0.55	2.87	12.81	*****
ETF	Wtree DEFA	DWM	EW	19.45	23.52	16.37	4.80	5.08	3.45	50.51	***
ETF	Wtree Emrg Mrkt EI	DEM	EW	2.16	10.42	6.30	-1.69	1.65	2.60	55.97	**
ETF	Wtree Eqty Income	DHS	EGI	22.56	16.46	15.98	10.86	4.05	2.54	53.12	*****
ETF	Wtree India	EPI	EWR	4.10	14.42	4.43	-6.34	5.29	6.00	18.92	**
ETF	Wtree Intrntl SC Div	DLS	EW	23.48	33.47	21.60	6.74	4.19	3.41	57.73	*****
ETF	Wtree LrgCap Div	DLN	ELC	17.68	15.60	13.75	8.07	2.62	2.31	60.31	*****
ETF	Wtree Sml Cap Div	DES	ESC	22.80	23.30	16.80	6.91	0.40	2.63	57.16	*****
ETF	Wtree Ttl Div	DTD	ELC	18.29	16.84	14.54	8.18	2.60	2.33	60.68	*****
F S T R2<60d	Yacktman	YACKX	EV	19.62	19.26	16.49	7.64	1.96	2.36	21.83	*****
Fn So Tn R2<60d	Yacktman Focused	YAFFX	EV	19.60	18.91	16.39	7.61	2.00	2.31	23.46	*****

Bond Funds Alphabetically

Legend	Fund Name	Symbol	Style	12m	9m	6m	3m	1m	V	NAV	Rank
Fn So Tn R2<90d	AmBcn HiYld	AHYPX	BH	13.12	11.06	6.77	2.88	1.28	1.26	9.46	★★★★
Fn So Tn	AmBcn Intrmtd Bond	ABIPX	BI	3.44	1.05	0.24	1.16	0.73	0.45	11.05	★★★
Fn So Tn	AmBcn ShrtTrm Bond	AALPX	BS	1.24	0.64	0.08	0.07	0.00	0.14	8.76	★★★
Fn So Tn	AmCent Divrs Bond	ADFIX	BI	3.77	1.18	0.73	1.36	0.81	0.47	11.17	★★★
Fn So Tn	AmCent GNMA Income	BGNMX	BU	1.97	0.80	0.80	1.02	0.45	0.32	11.15	★★★
Fn So Tn	AmCent High Yld	ABHIX	BH	12.52	9.79	6.35	2.74	1.43	1.26	6.38	★★★
Fn So Tn	AmCent Inf Adj B	ACITX	BU	4.14	1.07	0.17	1.07	0.69	0.78	13.22	★★
Fn So Tn	AmCent Intl Bond	BEGBX	BW	-1.04	-0.70	-2.78	-0.77	1.64	0.94	14.22	★★★
Fn So Tn	AmCent US Govt Short	TWUSX	BS	0.20	0.00	0.13	0.11	0.10	0.07	9.72	★★
Fn So Tn	Artio Gbl Hlncm	BJBHIX	BW	13.95	12.18	7.81	3.61	1.82	1.33	10.74	★★★★★
Fn So Tn	Artio Gbl Ttl Rtrn	BJBGX	BW	5.24	2.85	1.81	1.80	1.44	0.53	13.98	★★★
Fn So T	Aston Bond	CHTBX	BI	8.00	5.01	2.09	1.44	1.00	0.65	11.16	★★★★
Fn So Tn R2<30d	BMO Agg Bond	MABYX	BI	5.03	2.26	1.15	1.72	0.92	0.56	11.01	★★★
Fn So Tn R2<30d	BMO Govt Income	MRGIX	BU	2.56	1.21	0.57	1.12	0.52	0.37	9.60	★★★
Fn So Tn R2<30d	BMO Shrt Intmtd Bond	MAIBX	BI	3.77	2.01	1.38	1.44	0.47	0.40	10.61	★★★
Fn So Tn R2<180d	Buffalo High Yld	BUFHX	BH	8.67	7.88	5.74	3.10	1.25	0.95	11.79	★★★★
Fn S T	California Invest US Govt Secry	CAUSX	BU	1.04	-0.52	0.17	0.82	0.47	0.51	10.78	★★★
F S T	Dodge & Cox Income	DODIX	BF	5.46	3.37	1.45	1.34	0.80	0.48	13.94	★★★
Fn So Tn R2<30d	Domini Social Bond	DSBFX	BI	1.73	0.57	0.28	0.83	0.44	0.28	11.49	★★★
Fn So Tn	DoubleLine Core FI	DLFNX	BI	6.20	3.35	1.72	1.73	1.06	0.56	11.40	★★★
Fn So Tn	DoubleLine Emrg Mrkt	DLENX	BW	7.27	4.31	1.33	0.35	0.09	0.79	11.04	★★★
Fn So Tn	DoubleLine Ttl Rtrn Bond	DLTNX	BF	6.96	4.82	2.48	1.44	0.71	0.59	11.41	★★★★
Fn Tn	Dreyfus Bond Mkt	DBMIX	BI	2.82	0.59	0.33	1.15	0.73	0.43	11.00	★★★
Fn So Tn	Dreyfus GNMA	DRGMX	BU	1.86	0.72	0.70	0.96	0.70	0.31	15.64	★★★
Fn So Tn	Dreyfus Inflation Adj	DIAXX	BI	3.56	0.85	-0.16	0.81	0.73	0.75	13.85	★★★
Fn So Tn	Dreyfus Short Term Incm	DSTIX	BS	2.74	2.34	1.11	0.36	0.19	0.26	10.78	★★★
Fn So Tn	Dreyfus Short-Intrmtd Govt	DSIGX	BI	0.00	-0.18	-0.01	0.01	0.00	0.08	10.58	★★★
Fn So Tn	Dreyfus US Intrmtd	DRGIX	BI	1.12	0.15	0.46	0.86	0.37	0.38	13.69	★★★
Fn So Tn C	Dreyfus US Long	DRGBX	BL	5.70	-2.91	0.26	4.62	3.58	2.38	19.96	★★★
Fn So Tn R2<90d	Federated High Yld	FHYTX	BH	16.10	12.05	8.52	3.70	1.22	1.56	6.65	★★★★
Fn So T	Federated Intrmtd Incm	FIIFX	BI	7.06	5.18	2.18	1.64	0.68	0.67	10.40	★★★
Fn S T R1<90d	Fidelity Cap/Incm	FAGIX	BH	12.78	11.74	8.13	3.34	1.44	1.41	9.86	★★★
Fn S T	Fidelity GNMA	FGMNX	BU	2.41	0.94	0.69	0.97	0.51	0.31	11.77	★★★
Fn S T	Fidelity Govt Securities	FGOVX	BU	2.54	0.50	0.49	1.15	0.57	0.49	10.60	★★★
Fn S T R1<90d	Fidelity High Incm	SPHIX	BH	11.94	9.61	6.08	2.71	1.16	1.22	9.59	★★★
Fn S T	Fidelity Intermediate Bond	FTHRXX	BI	3.99	2.06	1.09	1.17	0.54	0.40	11.18	★★★
Fn S T	Fidelity Intrm Gov	FSTGX	BU	1.95	0.68	0.55	0.82	0.37	0.33	10.88	★★★
Fn S T	Fidelity Invst Grade Bond	FBNDX	BI	4.86	1.88	1.03	1.45	0.88	0.51	8.03	★★★
Fn S T	Fidelity Mortgage Security	FMSFX	BU	2.85	1.35	0.74	0.89	0.44	0.34	11.37	★★★
Fn S T R1<90d	Fidelity New Markets Income	FNMIX	BW	11.58	6.79	3.16	0.55	1.92	1.72	17.51	★★★
Fn S T	Fidelity Short Term Bond	FSHBX	BS	1.69	1.06	0.46	0.24	0.12	0.13	8.61	★★★
Fn S T	Fidelity Total Bond	FTBFX	BI	5.33	2.53	1.57	1.72	1.01	0.54	11.02	★★★
F So Tn	Forward High Yld	AHBIX	BH	12.72	10.05	6.41	3.32	1.75	1.21	10.72	★★★★
F So Tn	Forward Income	AIAIX	BF	13.95	12.60	8.03	3.25	1.57	1.37	16.06	★★★★
F So Tn	Forward Ivest Grade FI	AITIX	BI	6.04	2.99	2.73	2.90	1.61	0.77	11.83	★★★
F So Tn	Forward Long/Sh Crdt	FLSRX	BF	7.61	4.79	2.77	0.31	0.78	0.99	9.05	★★★
ETF	Guggnhm Blt 2015 HY	BSJF	BH	10.01	8.30	4.98	2.89	1.47	1.05	27.17	★★★
F S T	Harbor Bond	HABDX	BF	6.97	4.16	2.39	1.96	1.04	0.59	12.63	★★★★
Fn So Tn	Hennessey Core Bond	HCBFX	BI	5.01	2.06	1.11	1.26	0.51	0.54	9.79	★★★
F S Tn	Homestead Shrt Bond	HOSBX	BS	4.10	3.20	1.80	0.88	0.19	0.34	5.26	★★★★
Fn So Tn R2<30d	Intrepid Income	ICMYX	BH	4.47	3.72	2.12	0.94	0.51	0.45	9.76	★★★
ETF	iShares 10-20yr Trsry	TLH	BI	5.85	-0.25	1.61	4.07	2.48	1.77	136.81	★★★
ETF	iShares 1-3yr Trsry	SHY	BS	0.38	0.20	0.25	0.16	0.07	0.08	84.51	★★★
ETF	iShares 20+ yr Trsry	TLT	BL	7.59	-3.32	1.01	5.54	4.68	2.93	123.01	★★★
ETF	iShares 3-7yr Trsry	IEI	BI	2.13	0.78	1.01	1.28	0.56	0.48	124.12	★★★
ETF	iShares 7-10yr Trsry	IEF	BI	4.70	0.79	1.67	2.97	1.52	1.13	108.83	★★★
ETF	iShares Agg Bond	AGG	BI	3.75	1.28	1.06	1.67	0.97	0.47	111.54	★★★
ETF	iShares High Yld	HYG	BH	12.25	9.70	6.89	3.97	2.12	1.49	95.85	★★★
ETF	iShares Intr Gov	GVI	BU	2.88	1.32	0.82	1.10	0.58	0.36	112.84	★★★
ETF	iShares Interntl Tbond	IGOV	BW	2.90	4.38	-0.99	-0.89	2.32	1.53	101.96	★★★
ETF	iShares Long Corp Bond	LQD	BL	8.91	3.56	1.13	3.23	2.17	1.14	122.13	★★★
ETF	iShares MBS Bond	MBB	BU	1.77	0.55	0.43	0.92	0.60	0.26	108.33	★★★
ETF	iShares Trsry Infltn	TIP	BI	4.37	1.30	0.40	1.20	0.79	0.80	122.15	★★★
Fn So Tn	Janus Flexible Bond	JAFIX	BF	5.57	2.70	1.14	1.51	0.65	0.57	10.86	★★★
Fn So Tn	Janus High Yield	JAHYX	BH	11.72	9.78	6.56	2.96	1.38	1.12	9.55	★★★★
Fn So Tn	Janus Short term Bond	JASBX	BS	2.15	1.41	0.72	0.59	0.00	0.21	3.09	★★★
Fn So Tn R1<30d	Lazard High Yield	LZHOX	BH	9.62	7.84	5.36	2.17	0.98	0.97	5.13	★★★★
F S T R1<30d	LKCM Fixed Incm	LKFIX	BF	3.91	2.48	1.20	1.28	0.71	0.41	11.29	★★★
Fn So Tn	Loomis Sayles Bond	LSBRX	BF	12.28	11.60	7.20	3.28	2.60	1.40	15.57	★★★
Fn So Tn	Managers Bond	MGBIX	BF	10.18	7.57	4.07	2.49	1.55	0.86	28.52	★★★★
Fn So Tn R1<60d	Managers Gbl Bond	MGGBX	BW	8.30	6.96	3.56	1.60	1.84	1.04	20.98	★★★
Fn So Tn	Metropitn High Yld	MWHYX	BH	13.02	10.57	6.19	2.73	1.23	1.24	10.72	★★★★
Fn So Tn	Metropitn Strtgc Incm	MWSTX	BF	12.03	9.11	3.93	1.92	0.72	0.94	8.38	★★★★
Fn So Tn	Metropitn Ttl Rtrn Bond	MWTRX	BF	9.23	5.86	2.74	1.68	0.92	0.73	11.02	★★★★
F S T	Nicholas High Incm	NCINX	BH	10.62	7.82	5.02	2.01	0.30	1.00	10.17	★★★

Fidelity Select Funds

<i>Fund Name</i>	<i>Symbol</i>	<i>Style</i>	<i>12m</i>	<i>9m</i>	<i>6m</i>	<i>3m</i>	<i>1m</i>	<i>V</i>	<i>NAV</i>	<i>Rank</i>
Fidelity Air Transport	FSAIX	EFS	24.73	30.09	26.07	9.49	-0.55	2.61	46.77	*****
Fidelity American Gold	FSAGX	EFS	-34.84	-28.76	-40.54	-27.16	-18.85	6.97	24.89	*
Fidelity Automotive	FSAVX	EFS	23.47	38.92	30.17	10.30	5.02	4.02	44.11	***
Fidelity Banking	FSRBX	EFS	13.44	14.17	10.30	4.37	-0.43	2.86	21.18	***
Fidelity Biotechnology	FBIOX	EFS	45.47	32.37	31.53	18.69	5.82	4.01	140.04	*****
Fidelity Broker & Inv.	FSLBX	EFS	31.35	36.19	22.37	6.57	4.81	4.03	58.85	***
Fidelity Bus Srvc	FBSOX	EFS	14.16	22.22	15.60	3.70	-1.68	3.74	28.28	***
Fidelity Chemicals	FSCHX	EFS	16.93	19.34	15.15	2.19	1.69	2.58	125.19	***
Fidelity Computers	FDCPX	EFS	0.33	6.92	11.94	3.20	-2.70	3.90	61.36	**
Fidelity Constrctn & Housing	FSHOX	EFS	27.17	32.34	16.23	3.20	0.74	3.78	53.68	***
Fidelity Consumer Prdcts	FSCPX	EFS	17.71	23.33	17.93	9.15	3.71	2.88	29.38	***
Fidelity Consumer Staples	FDFAV	EFS	22.85	17.74	16.87	8.98	3.03	2.98	90.00	***
Fidelity Cyclical	FCYIX	EFS	15.40	20.63	15.73	3.41	-2.22	2.71	27.45	***
Fidelity Defense & Aero	FSDAX	EFS	13.90	21.86	16.75	7.99	-0.36	2.50	95.73	***
Fidelity Devlp Communications	FSDCX	EFS	1.30	18.14	16.20	-2.74	-2.34	4.58	23.82	**
Fidelity Electronics	FSELX	EFS	-1.87	9.31	18.63	3.74	-1.95	4.15	50.20	**
Fidelity Energy	FSENX	EFS	9.53	15.24	9.89	1.68	-0.90	3.95	55.71	***
Fidelity Energy Services	FSESX	EFS	8.72	13.80	15.15	-0.05	-0.23	4.21	74.47	***
Fidelity Environmental	FSLEX	EFS	17.45	22.56	18.04	4.06	0.59	2.38	18.68	***
Fidelity Financial Svcs	FIDSX	EFS	20.23	22.82	15.23	4.44	3.97	3.23	68.86	***
Fidelity Health Care	FSPHX	EFS	28.13	27.86	20.18	11.47	3.61	3.12	155.58	*****
Fidelity Home Finance	FSVLX	EFS	24.43	22.39	12.71	6.44	0.58	3.27	15.15	***
Fidelity Industrial Equipment	FSCGX	EFS	8.96	16.14	11.23	0.08	-2.57	2.74	39.01	***
Fidelity Industrial Materials	FSDPX	EFS	13.20	16.73	9.73	1.31	-0.62	2.38	74.97	***
Fidelity Insurance	FSPCX	EFS	26.61	30.66	19.24	9.70	2.71	2.91	59.39	*****
Fidelity Leisure	FDLSX	EFS	10.96	28.82	23.33	9.57	2.29	4.00	113.56	***
Fidelity Med Delivery	FSHCX	EFS	7.65	16.93	8.88	5.92	2.05	3.13	61.80	***
Fidelity Multimedia	FBMPX	EFS	36.13	30.74	20.24	10.42	2.33	3.40	66.88	*****
Fidelity Natural Gas	FSNGX	EFS	7.77	8.22	9.27	0.71	-1.62	3.23	33.51	**
Fidelity Natural Rsrcs	FNARX	EFS	5.66	12.84	5.54	-0.26	-2.14	4.02	34.31	**
Fidelity Pharma	FPHAX	EFS	24.26	20.78	18.56	10.10	4.13	2.86	17.36	*****
Fidelity Retailing	FSRPX	EFS	12.30	19.21	15.22	5.61	3.85	3.70	69.68	***
Fidelity Software & Comptr	FSCSX	EFS	9.93	17.03	13.41	4.12	0.26	3.67	90.88	***
Fidelity Technology	FSPTX	EFS	1.33	8.08	6.12	1.54	-1.27	3.25	103.96	*
Fidelity Telecommunications	FSTCX	EFS	27.25	17.54	14.84	10.44	7.80	2.98	57.53	***
Fidelity Transportation	FSRFX	EFS	21.52	23.91	24.32	9.41	0.06	2.59	60.56	*****
Fidelity Utilities	FSUTX	EFS	23.16	17.88	17.98	13.38	4.96	2.85	67.96	*****
Fidelity Wireless	FWRLX	EFS	21.39	21.07	14.50	6.04	3.40	3.15	9.13	***

Fidelity Select Funds have a 30-day holding period to avoid a short-term redemption charge of 0.75%.

ETFs sorted by Bond or Equity Class then Name

Fund Name	Symbol	Style	12 m	9 m	6 m	3 m	1 m	V	NAV	Rank
Guggnhm BIt 2015 HY	BSJF	BH	10.01	8.30	4.98	2.89	1.47	1.05	27.17	***
iShares 10-20yr Trsry	TLH	BI	5.85	-0.25	1.61	4.07	2.48	1.77	136.81	***
iShares 1-3yr Trsry	SHY	BS	0.38	0.20	0.25	0.16	0.07	0.08	84.51	***
iShares 20+ yr Trsry	TLT	BL	7.59	-3.32	1.01	5.54	4.68	2.93	123.01	***
iShares 3-7yr Trsry	IEI	BI	2.13	0.78	1.01	1.28	0.56	0.48	124.12	***
iShares 7-10yr Trsry	IEF	BI	4.70	0.79	1.67	2.97	1.52	1.13	108.83	***
iShares Agg Bond	AGG	BI	3.75	1.28	1.06	1.67	0.97	0.47	111.54	***
iShares High Yld	HYG	BH	12.25	9.70	6.89	3.97	2.12	1.49	95.85	***
iShares Inter Gov	GVI	BU	2.88	1.32	0.82	1.10	0.58	0.36	112.84	***
iShares Intrntl Tbond	IGOV	BW	2.90	4.38	-0.99	-0.89	2.32	1.53	101.96	***
iShares Long Corp Bond	LQD	BL	8.91	3.56	1.13	3.23	2.17	1.14	122.13	***
iShares MBS Bond	MBB	BU	1.77	0.55	0.43	0.92	0.60	0.26	108.33	***
iShares Trsry Infltn	TIP	BI	4.37	1.30	0.40	1.20	0.79	0.80	122.15	***
PS Build America	BAB	B	10.18	4.70	4.94	4.12	2.45	1.24	30.91	***
PS Emrg Mrgt Bnd	PCY	BW	14.00	7.01	1.87	3.08	4.44	2.13	31.00	***
PS High Yield	PHB	BH	9.84	7.75	4.66	3.02	1.63	1.11	19.60	***
PS Laddrd 1-30 T	PLW	BF	5.25	-0.81	1.28	3.51	2.51	1.70	32.94	***
PS Prfrd	PGX	BI	11.15	6.63	4.20	2.89	1.20	0.96	14.98	***
PS Short Trsry 20yr	TBF	BL	-9.87	1.24	-2.37	-5.91	-4.78	2.83	28.48	***
SPDR Hi Yield	JNK	BH	12.38	9.91	6.84	3.88	2.07	1.58	41.75	***
SPDR Intrntl Tbond	BWX	BW	1.32	1.99	-0.79	-0.16	2.69	1.18	60.00	***
Vngrd Intrm dt Bond	BND	BI	3.54	1.27	1.03	1.64	1.02	0.47	84.18	***
Vngrd ShrtTrm Bond	BSV	BS	1.65	0.96	0.67	0.54	0.29	0.17	81.09	***
W tree Dryfs Emrg Crrncy	CEW	B	2.01	5.13	3.65	0.71	1.23	1.47	21.32	***
Fund Name	Symbol	Style	12 m	9 m	6 m	3 m	1 m	V	NAV	Rank
Currency Euro	FXE	EC	-0.90	6.73	1.42	-3.11	2.71	2.17	130.53	***
Guggnhm Multi Ast In	CVY	EV	17.20	15.74	12.30	5.37	1.64	2.19	24.24	***
iShares Canada	EW C	EW	0.97	7.99	-0.34	-2.94	-1.72	2.64	28.02	***
iShares China	FXI	EW	2.22	10.56	2.81	-8.99	2.19	4.86	37.74	***
iShares Cohen&Str REIT	ICF	ERE	15.59	12.40	16.73	10.08	7.12	2.80	88.32	***
iShares DJ Sltc Div	DVY	EGI	19.85	17.39	15.32	9.86	3.26	2.15	65.47	***
iShares EAFE Indx	EFA	EW	19.27	25.22	16.85	5.02	5.02	3.41	61.94	***
iShares Emrg Mrgt Stk	EEM	EW	4.47	11.36	5.87	-2.10	1.22	3.01	43.29	***
iShares Europe 350	IEV	EW	17.85	23.16	12.45	0.97	4.51	3.74	41.50	***
iShares Gold	IAU	EG	-11.58	-8.72	-14.38	-11.42	-7.54	2.91	14.35	***
iShares Latin Am r	ILF	EW	-2.71	4.30	3.56	-4.75	-0.73	3.40	43.33	***
iShares Mexico	EW W	EW	18.46	16.71	10.68	-1.73	-3.00	4.42	72.35	***
iShares Prfrd	PFF	EGI	11.08	8.11	4.69	2.73	1.05	1.09	40.77	***
iShares REIT	IYR	ERE	19.35	15.56	17.19	10.13	5.73	2.60	73.46	***
iShares Russel 2000	IWM	ESC	17.87	21.95	16.60	5.34	-0.35	3.01	94.10	***
iShares Russel Micro	IWC	ESC	18.31	21.12	16.20	5.93	-0.05	3.29	58.63	***
iShares Russel Mid Val	IWS	EV	23.41	26.03	19.76	7.36	1.32	2.71	57.75	***
iShares Silver	SLV	EG	-22.09	-13.50	-24.98	-22.93	-14.47	6.50	23.46	***
iShares Sltc Div	IDV	ELC	19.43	21.55	12.74	4.07	5.65	3.51	36.08	***
PS Agrcltr	DBA	EA	-3.92	-12.98	-9.37	-6.06	1.24	3.01	26.22	***
PS Commodity	DBC	EC	-7.53	-3.60	-4.68	-7.73	-3.81	3.48	26.27	***
PS Dynmc Mrgt	PWC	ELC	22.14	23.13	20.68	7.00	0.27	3.24	56.16	***
PS Dynmc OTC	PWO	ESC	9.26	15.20	18.55	8.84	2.22	3.11	55.31	***
PS Energy	DBE	EA	-7.42	4.45	1.21	-5.56	-4.91	4.46	27.68	***
PS Gold	DGL	EG	-12.98	-9.74	-15.16	-11.88	-7.86	3.00	50.20	***
PS High Yield Eqty	PEY	EMC	20.18	18.71	14.41	8.65	2.09	1.95	10.76	***
PS Oil	DBO	EA	-14.54	3.24	4.24	-6.01	-4.44	5.22	25.80	***
PS QQQ	QQQ	ELC	7.32	10.31	9.75	6.00	2.54	3.07	70.72	***
PS Short Dow 30	DOG	EC	-15.13	-15.29	-13.66	-7.49	-2.09	2.51	30.02	***
PS Silver	DBS	EG	-23.52	-14.26	-25.84	-23.80	-15.00	6.69	41.24	***
Select SPDR Cnsmr Disc	XLY	EA	21.71	27.06	19.66	9.26	3.04	3.06	54.61	***
Select SPDR Cnsmr Stpl	XLP	EA	23.44	17.61	17.57	11.59	2.94	2.57	40.94	***
Select SPDR Dividend	SDY	EGI	22.50	21.92	17.87	9.24	1.91	2.19	67.25	***
Select SPDR Energy	XLE	EA	11.95	13.97	9.85	1.64	-1.31	3.57	78.27	***
Select SPDR Financs	XLF	EA	23.46	29.34	18.75	7.96	2.69	3.80	18.70	***
Select SPDR Health	XLV	EA	28.73	25.11	19.40	10.78	2.87	2.69	47.33	***
Select SPDR Indl	XLI	EA	14.58	17.87	14.93	3.87	-0.74	2.23	41.45	***
Select SPDR Matrls	XLB	EA	10.43	15.61	11.20	1.78	0.94	2.49	39.55	***
Select SPDR Technlgy	XLK	EA	5.14	6.75	7.75	5.19	1.75	2.97	30.80	***
Select SPDR Utilities	XLU	EA	20.88	12.63	14.53	14.24	5.96	2.69	41.43	***
SPDR DJ Gbl Titans	DGT	EW	15.49	20.72	14.57	3.66	3.32	2.84	60.96	***
SPDR DJ Industrials	DIA	ELC	15.18	16.26	14.75	7.55	1.96	2.44	148.02	***
SPDR Euro Stoxx 50	FEZ	EW	21.62	27.39	11.37	-1.61	6.81	5.19	35.29	***
SPDR Gold	GLD	EG	-11.81	-8.77	-14.42	-11.43	-7.57	2.90	142.77	***
SPDR S&P 500	SPY	ELC	16.70	17.93	14.28	7.14	1.92	2.66	159.68	***
SPDR Wlsh REIT	RWR	ERE	17.05	14.14	17.88	10.42	6.78	2.82	82.89	***
Vngrd Emrg Mrgt	VWO	EW	5.31	12.02	6.67	-1.66	2.00	3.07	43.76	***
Vngrd Large Cap	VV	ELC	16.76	18.45	14.71	7.13	1.99	2.67	73.17	***
Vngrd Small Cap	VB	ESC	19.51	23.70	17.89	6.27	0.30	2.90	91.42	***
Vngrd TTL Stock	VTI	ELC	17.10	18.97	15.10	6.97	1.61	2.69	82.26	***
W tree DEFA	DWM	EW	19.45	23.52	16.37	4.80	5.08	3.45	50.51	***
W tree Emrg Mrgt EI	DEM	EW	2.16	10.42	6.30	-1.69	1.65	2.60	55.97	***
W tree Eqty Income	DHS	EGI	22.56	16.46	15.98	10.86	4.05	2.54	53.12	***
W tree India	EPI	EW R	4.10	14.42	4.43	-6.34	5.29	6.00	18.92	***
W tree Intrntl SC Div	DLS	EW	23.48	33.47	21.60	6.74	4.19	3.41	57.73	***

American Century Funds Alphabetically

Fund Name	Symbol	Style	12m	9m	6m	3m	1m	V	NAV	Rank
AmCent Blncd Investors	TWBIX	HB	11.07	11.14	8.75	4.53	1.39	1.65	18.26	***
AmCent Cap Value	ACTIX	EV	19.38	19.75	14.00	6.34	2.12	2.71	7.72	***
AmCent Divrs Bond	ADFIX	BI	3.77	1.18	0.73	1.36	0.81	0.47	11.17	***
AmCent Emrg Mrkt	TWMIX	EW	8.15	16.18	8.55	0.47	2.18	2.93	8.89	**
AmCent Equity Growth	BEQGX	ELC	16.36	18.43	14.58	6.76	1.70	2.75	27.44	***
AmCent Equity Income	TWEIX	EGI	17.50	14.88	11.79	6.08	2.24	2.01	8.66	****
AmCent Global Gold	BGEIX	EG	-32.91	-27.04	-41.23	-27.05	-19.47	7.35	11.95	*
AmCent Global Grth	TWGGX	EW	9.60	14.81	11.91	3.82	1.93	2.70	10.58	***
AmCent GNMA Income	BGNMX	BU	1.97	0.80	0.80	1.02	0.45	0.32	11.15	***
AmCent Grwth Investors	TWCGX	ELC	8.05	12.94	11.62	5.33	1.48	2.55	29.46	***
AmCent Hertg Investors	TWHIX	EMC	7.41	15.55	12.01	4.81	0.86	2.86	24.62	***
AmCent High Yld	ABHIX	BH	12.52	9.79	6.35	2.74	1.43	1.26	6.38	***
AmCent Income & Growth	BIGRX	EGI	17.66	19.92	16.20	8.78	2.97	2.79	31.19	***
AmCent Inf Adj B	ACITX	BU	4.14	1.07	0.17	1.07	0.69	0.78	13.22	**
AmCent Intl Bond	BGBX	BW	-1.04	-0.70	-2.78	-0.77	1.64	0.94	14.22	*
AmCent Intl Discv	TWEGX	EW	14.03	22.48	13.34	7.08	4.34	2.84	11.07	***
AmCent Intl Grth	TWIEX	EW	18.67	23.63	16.07	5.39	4.51	3.28	12.51	***
AmCent Lrg Co Value	ALVIX	ELC	19.55	20.01	14.11	6.32	2.17	2.72	7.07	***
AmCent Midcap Value	ACMVX	EMC	20.53	22.01	16.71	6.60	1.10	2.40	14.69	****
AmCent One Ch Very Consvrt	AONIX	HB	5.79	4.96	3.63	2.14	1.04	0.72	11.70	***
AmCent Real Estate	REACX	ERE	16.58	13.61	16.06	8.73	5.92	2.68	26.49	***
AmCent Select Investors	TWCIX	ELC	6.72	11.35	9.10	4.15	1.90	2.80	47.15	**
AmCent Small Co	ASQIX	ESC	17.65	22.10	19.22	7.24	0.10	2.93	9.93	***
AmCent SmlCap Grth	ANOIX	ESC	12.20	20.75	15.25	4.98	-0.88	2.99	10.11	***
AmCent Strtgc Agg	TWSAX	HB	11.73	14.66	11.18	4.62	1.88	2.15	8.68	***
AmCent Strtgc Consvrtv	TWSCX	HB	8.22	8.38	6.26	3.08	1.34	1.21	6.03	***
AmCent Ultra Investors	TWCUX	EMC	8.46	13.47	10.95	4.92	1.80	2.70	28.35	***
AmCent US Govt Short	TWUSX	BS	0.20	0.00	0.13	0.11	0.10	0.07	9.72	**
AmCent Utilities Income	BULIX	EGI	22.42	12.41	14.92	13.85	5.96	2.72	17.77	****
AmCent Value	TWVLX	EV	19.42	20.53	15.61	6.52	1.55	2.65	7.22	***
AmCent Veedot	AMVIX	ESC	18.05	20.54	15.64	8.15	1.95	2.54	7.83	****
AmCent Vista Investors	TWCVX	ESC	7.99	16.46	13.36	4.53	0.77	2.93	19.60	***

Fidelity Funds Alphabetically

<i>Fund Name</i>	<i>Symbol</i>	<i>Style</i>	<i>12m</i>	<i>9m</i>	<i>6m</i>	<i>3m</i>	<i>1m</i>	<i>V</i>	<i>NAV</i>	<i>Rank</i>
Fidelity Aggrsv Grth	FDEGX	EA	13.69	21.24	17.49	6.50	1.25	2.75	23.44	***
Fidelity Aggrsv Intl	FIVFX	EW	16.73	22.66	15.93	4.73	2.31	3.00	15.07	***
Fidelity AM Eqty 20%	FASIX	HA	5.72	4.67	3.51	1.86	0.94	0.64	13.46	*****
Fidelity AM Eqty 50%	FASMX	HA	9.82	9.95	7.41	3.18	1.60	1.38	17.35	***
Fidelity AM Eqty 70%	FASGX	HA	12.07	13.41	9.93	3.90	1.86	1.93	18.65	***
Fidelity AM Eqty 85%	FAMRX	HA	13.83	15.93	11.88	4.47	2.12	2.32	15.44	***
Fidelity Balanced	FBALX	HB	11.11	11.19	8.49	4.13	1.21	1.77	21.55	***
Fidelity Blue Chip Growth	FBGRX	ELC	10.88	16.66	13.66	5.91	1.44	3.15	54.26	***
Fidelity Cap/Incm	FAGIX	BH	12.78	11.74	8.13	3.34	1.44	1.41	9.86	***
Fidelity Capital Appreciation	FDCAX	ELC	17.14	20.17	16.17	7.97	2.00	2.46	33.07	*****
Fidelity Contra	FCNTX	ELC	12.56	15.60	13.48	6.99	1.82	2.68	85.45	***
Fidelity Convertible Securities	FCVSX	EGI	15.64	21.91	14.93	4.06	0.79	2.19	27.95	*****
Fidelity Disciplined Equity	FDEQX	ELC	17.72	19.71	15.46	7.51	1.51	2.99	27.63	***
Fidelity Diversified Intl	FDIVX	EW	17.22	21.80	14.60	5.44	4.70	3.11	32.73	***
Fidelity Dividend Growth	FDGFX	ELC	14.79	19.00	13.66	5.30	1.38	2.88	33.15	***
Fidelity Emrg Asia	FSEAX	EW R	9.69	16.37	9.12	1.12	2.72	3.00	30.61	**
Fidelity Emrg Mrkt	FEMKX	EW	6.47	15.48	10.32	2.86	1.82	2.65	24.11	***
Fidelity Equity Income II	FEQTX	HGI	19.20	17.63	14.36	7.99	2.31	2.37	22.08	***
Fidelity Europe	FIEUX	EW R	20.82	24.98	14.28	2.75	3.57	3.62	33.67	***
Fidelity Europe Cap App	FECAX	EW R	20.11	25.82	14.00	2.61	3.55	3.76	20.41	***
Fidelity Export & Multintl	FEXPX	ELC	13.53	14.76	12.35	6.25	0.96	2.62	24.15	***
Fidelity Fifty	FFTYX	EV	13.56	18.55	14.23	6.11	1.12	2.79	22.59	***
Fidelity Fund	FFIDX	ELC	14.33	15.64	13.10	5.62	1.50	2.66	39.87	***
Fidelity Global Balanced	FGBLX	HGI	9.17	11.29	7.09	3.22	1.77	1.67	24.67	***
Fidelity GNMA	FGMNX	BU	2.41	0.94	0.69	0.97	0.51	0.31	11.77	***
Fidelity Govt Securities	FGOVX	BU	2.54	0.50	0.49	1.15	0.57	0.49	10.60	***
Fidelity Growth & Income	FGRIX	EGI	20.28	21.53	16.01	8.07	2.78	2.94	24.07	***
Fidelity Growth Company	FDGRX	ELC	9.57	15.73	13.85	6.55	2.28	3.23	103.45	***
Fidelity High Incm	SPHIX	BH	11.94	9.61	6.08	2.71	1.16	1.22	9.59	***
Fidelity Independence	FDFFX	ELC	14.62	23.93	16.50	5.75	1.64	2.98	29.08	***
Fidelity Intermediate Bond	FTHRX	BI	3.99	2.06	1.09	1.17	0.54	0.40	11.18	***
Fidelity Intrm Gov	FSTGX	BU	1.95	0.68	0.55	0.82	0.37	0.33	10.88	***
Fidelity Intrntl Discvry	FIGRX	EW	20.49	25.11	16.41	6.60	4.86	3.21	36.49	***
Fidelity Invst Grade Bond	FBNDX	BI	4.86	1.88	1.03	1.45	0.88	0.51	8.03	***
Fidelity Japan	FJPNX	EW R	22.74	30.77	30.50	17.36	8.28	3.79	11.90	*****
Fidelity Latin America	FLATX	EW R	-5.86	2.48	1.44	-4.65	-0.31	3.05	45.36	**
Fidelity Levrg Co Stk	FLVCX	EMC	25.78	29.53	19.73	5.75	0.58	2.93	36.41	*****
Fidelity Low Priced Stock	FLPSX	ESC	19.26	24.80	18.40	8.10	2.87	3.00	44.85	***
Fidelity LrgCap Stock	FLCSX	ELC	19.74	23.02	15.99	7.22	2.07	3.24	23.17	***
Fidelity Magellan	FMAGX	EMC	13.10	16.51	12.13	4.88	0.99	2.88	80.75	***
Fidelity Mega Cap	FGRTX	ELC	18.14	20.02	14.21	7.22	2.77	2.99	13.37	***
Fidelity Mid Cap Stock	FMCSX	EMC	16.50	21.95	17.30	7.88	1.32	2.97	33.68	***
Fidelity Mortgage Security	FMSFX	BU	2.85	1.35	0.74	0.89	0.44	0.34	11.37	***
Fidelity New Markets Income	FNMIX	BW	11.58	6.79	3.16	0.55	1.92	1.72	17.51	***
Fidelity New Millennium	FMILX	ELC	15.99	19.60	14.68	7.02	1.10	2.86	34.15	***
Fidelity OTC	FOCPX	ESC	9.87	17.43	15.48	6.98	3.59	3.58	67.24	***
Fidelity Overseas	FOSFX	EW	20.57	25.24	16.57	6.19	4.48	3.30	35.67	***
Fidelity Pacific Basin	FPBFX	EW R	25.36	34.70	22.28	13.70	6.47	3.44	29.47	*****
Fidelity Puritan	FPURX	HGI	10.54	11.24	8.27	3.90	1.11	1.81	20.68	***
Fidelity Real Estate	FRESX	ERE	17.71	15.34	18.17	10.64	6.47	2.82	36.71	***
Fidelity Short Term Bond	FSHBX	BS	1.69	1.06	0.46	0.24	0.12	0.13	8.61	***
Fidelity Small Cap Stock	FSLCX	ESC	10.52	17.22	13.28	3.72	-0.05	2.69	19.78	***
Fidelity Small Cap Value	FCPVX	ESC	24.21	28.41	20.64	6.58	-1.22	2.99	18.62	*****
Fidelity Stock Slctr AllCap	FDSSX	ELC	16.12	18.70	14.19	5.86	1.70	2.75	31.63	***
Fidelity Stock Slctr SmCap	FDSCX	ESC	13.62	19.19	15.13	5.09	-0.04	2.72	22.50	***
Fidelity Total Bond	FTBFX	BI	5.33	2.53	1.57	1.72	1.01	0.54	11.02	***
Fidelity Trend	FTRNX	ELC	11.95	15.49	11.45	5.34	1.69	2.69	79.90	***
Fidelity Utilities	FIUIX	EGI	23.50	15.14	14.71	12.21	5.58	2.67	21.54	*****
Fidelity Value	FDVLX	EV	23.20	26.48	19.31	6.93	0.84	2.96	87.28	*****
Fidelity Value Strategies	FSLSX	EV	24.11	25.95	17.81	6.47	1.92	2.68	35.53	*****
Fidelity Worldwide	FWWFX	EW	16.59	21.36	15.06	6.16	2.82	2.84	22.57	***

T. Rowe Price Funds Alphabetically

<i>Fund Name</i>	<i>Symbol</i>	<i>Style</i>	<i>12m</i>	<i>9m</i>	<i>6m</i>	<i>3m</i>	<i>1m</i>	<i>V</i>	<i>NAV</i>	<i>Rank</i>
Price Balanced	RPBAX	HB	11.95	13.53	9.77	4.24	1.94	1.89	22.08	***
Price Blue Chip Growth	TRBCX	ELC	9.09	15.12	12.87	4.99	1.38	2.85	50.03	***
Price Capital Appreciation	PRWCX	HGI	15.11	15.52	11.63	5.24	1.46	1.86	24.30	****
Price Capital Opportunity	PRCOX	ELC	16.18	17.77	14.35	7.07	2.14	2.71	18.62	***
Price Corp Inc	PRPIX	BI	8.84	4.78	1.97	2.62	1.48	0.89	10.26	***
Price Diversfd SmlCap Grth	PRDSX	ESC	15.48	20.97	16.62	5.48	0.05	2.76	19.64	***
Price Dividend Growth	PRDGX	EGI	17.12	17.88	14.19	6.79	1.76	2.35	29.53	***
Price Emrg Mkt Bond	PREMX	BW	11.47	7.61	3.28	1.51	2.02	1.73	14.12	***
Price Emrg Mkt Stk	PRMSX	EW	6.02	11.61	4.71	-1.46	1.17	2.81	33.67	**
Price Equity Income	PRFDX	EGI	20.12	20.81	15.41	7.33	1.61	2.57	29.75	****
Price European Stock	PRESX	EWR	20.06	26.13	16.10	5.13	5.31	3.47	17.64	***
Price Gbl LrgCap	RPGEX	EW	13.28	17.57	11.91	3.14	0.99	2.77	19.39	***
Price Gbl Stk	PRGSX	EW	12.74	20.59	16.77	4.97	2.56	3.31	20.05	***
Price GNMA	PRGMX	BU	2.17	0.53	0.73	1.12	0.50	0.34	9.97	***
Price Growth & Income	PRGIX	EGI	14.45	17.13	13.42	6.20	1.82	2.43	25.14	***
Price Growth Stock	PRGFX	ELC	9.30	14.59	12.72	5.51	1.65	2.82	41.37	***
Price High Yield	PRHYX	BH	13.85	11.76	7.77	3.62	1.54	1.32	7.24	****
Price Intrntl Bond	RPIBX	BW	1.18	1.62	-1.55	-0.64	1.85	1.05	9.89	*
Price Intrntl Discovery	PRIDX	EW	16.07	24.43	13.38	5.45	2.91	3.06	50.30	***
Price Intrntl Grth Incm	TRIGX	HGI	14.95	21.74	14.87	4.06	4.22	3.18	14.09	***
Price Intrntl Stock	PRITX	EW	11.10	17.77	10.31	1.68	2.37	2.80	15.11	***
Price Japan	PRJPX	EWR	25.72	30.86	29.33	18.60	8.99	3.53	9.82	*****
Price Latin America	PRLAX	EWR	3.39	11.35	5.46	-2.70	-0.24	3.49	37.87	**
Price Mid Cap Growth	RPMGX	EMC	13.11	20.51	16.78	5.67	0.32	2.73	63.39	***
Price Mid Value	TRMCX	EV	21.49	22.32	15.73	6.33	0.41	2.75	27.05	***
Price New America Growth	PRWAX	EMC	11.89	16.90	12.21	4.53	0.77	2.56	39.21	***
Price New Asia	PRASX	EWR	8.57	12.96	6.57	0.06	1.01	2.33	16.93	**
Price New Era	PRNEX	EA	3.32	11.00	5.42	0.09	-2.06	3.40	43.76	**
Price New Horizons	PRNHX	ESC	15.18	20.65	18.34	7.24	1.17	2.96	38.06	***
Price New Income	PRCIX	BF	4.81	2.18	1.14	1.47	0.92	0.50	9.88	***
Price REIT	TRREX	ERE	13.84	13.07	15.14	8.93	6.19	2.57	23.52	***
Price Science & Technology	PRSCX	EA	1.64	15.30	16.39	4.02	1.81	3.92	29.76	**
Price Short term Bond	PRWBX	BS	1.51	0.98	0.29	0.27	0.00	0.17	4.84	***
Price Small Cap Stock	OTCFX	ESC	17.02	20.57	16.56	5.71	-0.39	2.68	38.14	***
Price Small Cap Value	PRSVX	ESC	17.51	21.33	14.97	4.00	-0.62	2.36	43.18	***
Price Spectrum Growth	PRSGX	EMC	13.93	18.45	13.34	4.74	1.77	2.67	21.23	***
Price Spectrum Income	RPSIX	BF	8.33	6.49	4.02	2.45	1.30	0.88	13.27	***
Price Strategic Income	PRSNX	BF	8.32	6.62	3.82	2.18	1.34	0.89	12.08	***
Price US Bond Indx	PBDIX	BI	3.62	1.28	0.63	1.36	0.70	0.45	11.52	***
Price US Treasury Bond Long	PRULX	BL	6.26	-3.13	0.54	4.66	3.50	2.51	13.60	**
Price US Treasury Intermediate	PRTIX	BI	2.70	0.37	0.99	1.63	0.65	0.72	6.24	**
Price Value	TRVLX	EV	23.63	25.03	18.12	7.67	1.78	2.94	30.33	****

Vanguard Funds Alphabetically

<i>Fund Name</i>	<i>Symbol</i>	<i>Style</i>	<i>12m</i>	<i>9m</i>	<i>6m</i>	<i>3m</i>	<i>1m</i>	<i>V</i>	<i>NAV</i>	<i>Rank</i>
Vanguard 500 Index	VFINX	EGI	16.72	17.68	14.33	7.13	1.91	2.67	147.37	***
Vanguard Balanced	VBINX	HB	11.59	11.56	9.24	4.80	1.39	1.60	25.55	***
Vanguard Cap Value	VCVLX	EGI	21.81	30.56	24.36	8.07	2.55	3.58	12.85	***
Vanguard Convertible Securities	VCVSX	EGI	13.59	14.10	10.56	3.37	1.12	1.85	13.57	***
Vanguard Dev Mrkt	VDMIX	EW	19.57	25.25	16.67	5.11	5.00	3.47	10.70	***
Vanguard Div Grth	VDIGX	ELC	17.33	17.65	15.40	8.68	3.09	2.28	19.04	****
Vanguard Equity Income	VEIPX	EGI	19.40	18.18	15.21	8.38	2.66	2.48	27.41	****
Vanguard European Index	VEURX	EWR	18.17	23.71	12.87	1.32	4.32	3.78	27.55	***
Vanguard Explorer	VEXPX	ESC	15.09	23.52	19.08	6.00	0.56	3.02	89.97	***
Vanguard Extended Mrkt Index	VEXMX	EMC	18.45	24.36	18.66	6.38	0.60	2.85	52.07	***
Vanguard Global Eqty	VHGEX	EW	17.91	23.22	15.65	5.72	2.42	2.80	20.71	***
Vanguard GNMA	VFIIIX	BU	1.83	0.66	0.66	1.09	0.46	0.32	10.90	***
Vanguard Grth Eqty	VGEQX	ELC	8.43	15.51	12.83	5.23	1.12	2.72	13.49	***
Vanguard Grwth & Incm	VQNPX	EGI	16.78	17.35	14.16	7.07	1.70	2.75	34.07	***
Vanguard High Yld Corp	VWEHX	BH	11.67	8.24	5.01	2.26	1.14	1.10	6.20	***
Vanguard High Yld Dividend	VHDYX	EV	20.18	17.61	15.00	9.04	2.95	2.47	22.36	****
Vanguard Intl Expl	VINEX	EW	13.68	24.35	15.17	5.25	3.50	2.98	16.25	***
Vanguard Intl Growth	VWIGX	EW	12.52	19.71	12.16	1.44	2.77	3.00	20.41	***
Vanguard Intl Value	VTRIX	EW	17.49	23.01	15.08	3.06	4.64	3.42	33.39	***
Vanguard IT InvstGrd	VFICX	BI	6.70	3.50	1.47	1.84	0.98	0.66	10.29	***
Vanguard IT Trsry	VFITX	BI	2.67	0.77	1.05	1.59	0.60	0.61	11.75	***
Vanguard LT InvGrd	VWESX	BL	11.07	2.67	1.43	4.08	3.20	1.53	10.96	***
Vanguard LT Trsry	VJUSTX	BL	6.77	-2.72	0.86	4.97	3.63	2.53	13.14	**
Vanguard MidCap Index	VIMSX	EMC	17.97	24.07	19.36	7.57	1.70	2.73	25.79	****
Vanguard Morgan Growth	VMRGX	ELC	9.60	15.81	13.80	5.96	1.57	2.75	22.03	***
Vanguard Pacific Index	VPACX	EWR	21.54	27.06	23.31	11.48	5.43	3.20	11.65	****
Vanguard PRIMECAP	VPMCX	ELC	23.76	24.50	21.08	9.50	2.45	2.81	81.27	****
Vanguard REIT	VGSIX	ERE	18.93	15.76	19.07	11.15	6.70	2.85	25.00	****
Vanguard Short Federal	VSGBX	BS	0.95	0.44	0.41	0.37	0.19	0.15	10.81	***
Vanguard Slctd Value	VASVX	EV	21.30	23.82	16.46	8.27	1.48	2.55	23.96	****
Vanguard SmlCap Grwth	VISGX	ESC	16.56	21.58	16.66	5.35	-0.46	3.06	27.98	***
Vanguard SmlCap Index	NAESX	ESC	19.22	23.39	17.80	6.23	0.14	2.86	43.76	***
Vanguard ST InvstGrd	VFSTX	BS	3.17	2.11	0.93	0.58	0.19	0.27	10.83	***
Vanguard ST Trsry	VFISX	BS	0.60	0.36	0.39	0.24	0.09	0.13	10.75	***
Vanguard Star	VGSTX	HGI	12.49	13.48	9.96	4.15	1.96	1.76	22.32	***
Vanguard Strtg Eqty	VSEQX	EMC	20.06	25.11	19.84	7.47	0.82	2.85	24.60	****
Vanguard TTL Bond Index	VBMFX	BF	3.28	0.87	0.63	1.35	0.73	0.46	11.08	***
Vanguard US Growth	VWUSX	ELC	10.86	17.21	14.09	4.51	0.47	2.95	23.42	***
Vanguard US Value	VUVLX	EV	23.24	23.79	18.83	7.49	1.04	3.00	13.63	****
Vanguard Value Index	VIVAX	EV	20.36	20.80	16.21	7.78	2.15	2.73	26.14	***
Vanguard Wellesley Incm	VWINX	HB	11.54	8.30	6.54	4.52	1.97	1.10	25.39	****
Vanguard Wellington	VWELX	HB	14.70	14.06	10.54	5.76	2.28	1.74	36.83	****
Vanguard Windsor	VWNDX	EV	20.98	23.89	17.90	5.96	1.18	2.90	17.08	***
Vanguard Windsor II	VWNFX	ELC	18.39	19.03	14.36	7.46	2.19	2.66	33.12	***