

ETF Selections & Timing

Watercourse Way Holdings, LLC

P.O. Box 830396

Richardson, TX 75083-0396

972-680-2366

InvestmentST.com

December 5, 2011 (data through previous Friday close)

Volume 2

Issue 48

Coordinated Easing's Impact

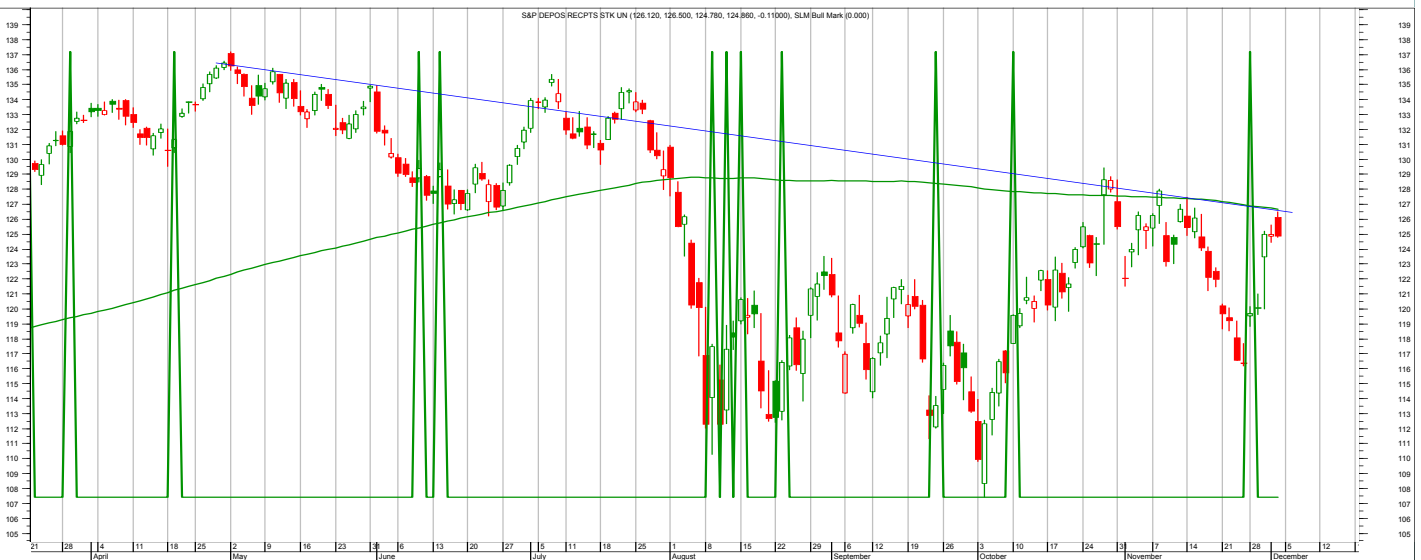
The world's central banks decided last week to act, to do something about slowing economies, ballooning deficits, and tightening liquidity, even as their politicians continue to talk, talk, talk. The banks are lowering interest rates, making the cost of money less.

It is a coordinated easing from the six biggies (Canada, ECB, England, Japan, Swiss, and US). This is expected to continue through 2/1/13. Additionally, the Federal Reserve is still maintaining its 2013 target before even considering raising domestic interest rates. In addition

last week, for the first time since 2008 China reduced the required reserves for its largest banks from 21.5% to 21%. This is coordinated easing.

On the one hand I have to say this show of unity is quite

(Continued on bottom right on page 12 see REVIEW on top)



The chart is the DAILY S&P 500 with 200-day simple moving average and showing possible buy signals.

SCOREBOARD

Model	YTD	52-week	26-week	13-week	4-week	1-week
ETF Income Portfolio	2.0%	1.4%	-0.7	-1.1	-0.3	0.1%
ETF Growth Portfolio	7.6%	7.8%	3.7	1.3	1.6	1.6%
Aggrgt Bond (AGG)	3.2%	2.7%	1.7	-0.8	-0.8	-0.5%
Wilshire 5000	-0.4%	2.5%	-4.4	6.5	-0.8	7.7%

CONTENTS

Pages 2-5	Income
Page 4	Bond Model
Pages 6-11	Growth
Page 12	Overflow
Page 13	Disclaimers

Income Portfolio

ACTION FOR			PORTFOLIO DETAILS				Value as of date:				12/2/2011			
Action Date	Action	Symbol	Action Price	# of Shares	Action Value	Symbol	Closing Stop as of 12/5	Description	Start Price	End Price	# of Shares	Current Value	Percent of Total	
29-Aug	buy	PHB	17.88	1,400.0	25,042	AGG	108.40	total bond	109.37	109.12	690.4	75,335.68	70.5%	
6-Sep	buy	BWX	62.00	190.0	11,790	LQD	110.00	corp bond	111.69	111.46	250.0	27,865.00	26.1%	
19-Sep	sell	BWX	61.20	190.0	11,618									
30-Sep	sell	PHB	17.55	1,400.0	24,560									
3-Oct	buy	AGG	110.34	250.0	27,595									
6-Oct	sell	AGG	109.45	752.5	82,351									
17-Oct	buy	AGG	109.37	687.0	75,147									
21-Nov	buy	LQD	111.69	250.0	27,933									
						Money Market					1.00	3,711	3,711.00	3.5%
												Total Valuation=	106,911.68	100.0%

WEEKLY REVIEW

11/28 No changes.

11/21 Buy LQD (Investment Grade Corporate Bonds) as noted above. This will bring the Income Portfolio to near fully invested. Please also note the sell stops.

11/14 No changes. Still 70% in and 30% cash.

11/7/11 No changes.

10/31 Raised the stop slightly on AGG. No other changes.

Performance	2010	2011	Incptn
ETF Income Portfolio	4.8	2.0	6.9
Aggregate Bond	2.5	3.2	5.7

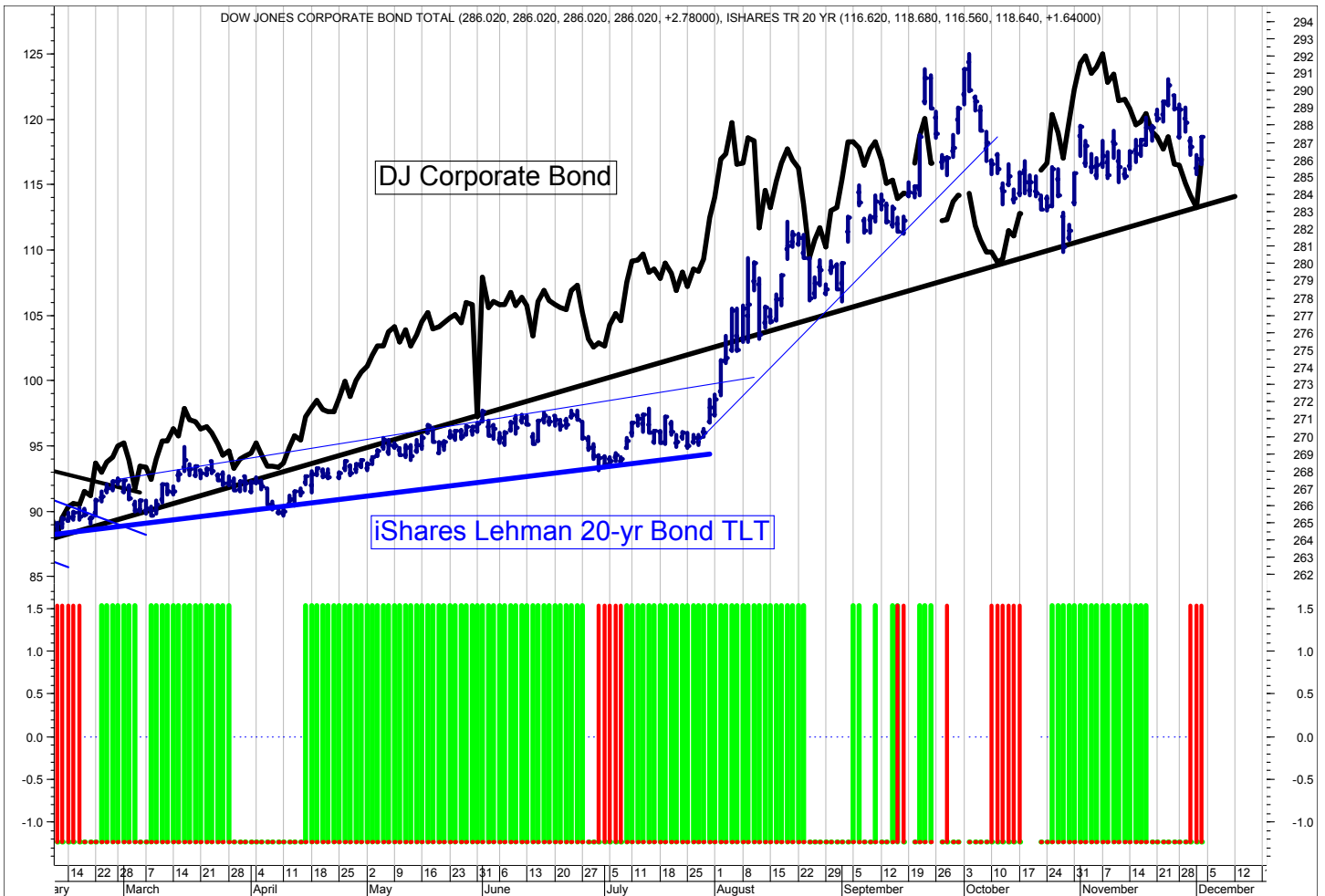
ETF Income Database and Ranking to 11/30/11

Fund Name	Symbol	Style	Hybrid						NAV	Rank	
			Equity	12m	9m	6m	3m	1m			V
iShares 20+ yr Trsry	TLT	B	B	19.78	27.58	21.92	10.14	1.73	3.88	117.88	*****
PS 1-30 Ldr Trsry	PLW	B	B	10.65	15.64	11.59	4.15	1.11	2.27	31.87	*****
iShares 10-20yr Trsry	TLH	B	B	10.57	16.08	11.90	3.35	0.91	2.30	130.38	****
iShares 3-7yr Trsry	IEI	B	B	3.42	5.90	3.37	0.12	0.10	0.86	121.43	*****
iShares 7-10yr Trsry	IEF	B	B	6.40	11.28	7.57	0.87	0.38	1.48	103.90	****
iShares Trsry Inflt	TIP	B	B	6.63	7.94	5.30	2.12	0.21	1.07	116.74	****
PS Bld America	BAB	B	B	11.74	12.61	6.85	3.86	0.58	2.08	28.46	****
Wtree Dryfs Jpn Yen	JYF	B	B	7.87	5.70	5.87	-1.55	-0.15	1.69	33.57	****
Currency Euro	FXE	B	B	3.52	-2.60	-6.65	-6.48	-2.92	3.16	133.85	**
iShares Agg Bond	AGG	B	B	1.87	3.53	1.79	-0.11	-0.59	0.69	109.38	**
iShares High Yld	HYG	B	B	-2.69	-6.38	-6.28	-1.62	-3.00	2.23	86.60	***
iShares Inter Bond	MBB	B	B	-1.39	2.31	0.69	-0.61	-0.14	0.64	107.80	***
iShares Inter Gov	GVI	B	B	0.87	2.31	0.92	-0.71	-0.65	0.56	110.51	***
iShares Intrntl Tbond	IGOV	B	B	-0.27	-4.12	-6.47	-9.40	-5.08	2.42	99.61	***
iShares Long Corp Bond	LQD	B	B	0.52	1.35	-0.67	-1.46	-3.50	1.18	110.69	**
PS DB Dollar Bearish	UDN	B	B	4.34	-1.37	-4.39	-5.19	-2.46	2.51	27.41	***
PS DB Dollar Bullish	UUP	B	B	-6.13	-0.14	3.38	4.70	2.27	2.58	22.06	***
PS DB G10 Currency	DBV	B	B	3.56	0.04	-3.59	-1.65	-2.13	2.32	23.87	***
PS Emrg Mrkt Svrgn Debt	PCY	B	B	0.26	2.82	-0.85	-3.16	-1.79	1.94	26.94	***
PS Fdmntl Hi Yield Corp	PHB	B	B	-0.72	-3.29	-4.01	-0.11	-1.64	1.45	17.95	***
PS Insrld CA Muni	PWZ	B	B	1.93	6.47	3.21	0.85	-0.09	1.58	23.80	***
PS Insrld Natl Muni	PZA	B	B	2.18	6.02	2.88	0.38	-0.17	1.55	23.95	***
PS Insrld NY Muni	PZT	B	B	2.00	5.76	3.35	0.73	-0.13	1.35	23.45	***
SPDR Intrntl TBond	BWX	B	B	3.66	-0.32	-4.46	-6.32	-3.22	2.36	59.14	***
Vngrd Intrmdt Bond	BND	B	B	1.77	3.75	2.04	-0.05	-0.31	0.67	83.36	**
Wtree Dryfs Brazil Real	BZF	B	B	-9.89	-3.68	-9.95	-10.69	-3.90	3.74	25.89	***
Wtree Dryfs Chns Yuan	CYB	B	B	1.55	0.95	0.51	-0.81	-0.04	0.90	25.61	***
Wtree Dryfs Emrg Crrncy	CEW	B	B	-6.63	-5.72	-8.89	-7.78	-2.94	2.56	21.11	***
Wtree Dryfs Euro	EU	B	B	-3.76	-9.57	-13.37	-13.34	-9.79	3.53	20.22	***
Wtree Dryfs N Zlnd Dollar	BNZ	B	B	0.34	-0.85	0.56	-8.00	-10.93	3.66	23.46	***
Wtree Emrg Mrkt Lcl Debt	ELD	B	B	-3.60	-3.31	-7.71	-8.43	-3.12	2.91	49.30	***
iShares 1-3yr Trsry	SHY	B	B	0.34	0.74	0.20	-0.20	-0.01	0.19	84.54	**
PS Low Duration	PLK	B	B	-0.12	0.36	0.00	-0.12	-0.17	0.34	25.40	**
PS Prfd	PGX	B	B	-4.14	-3.67	-5.40	-3.12	-2.43	1.19	13.66	**
Vngrd ShrtTrm Bond	BSV	B	B	-0.32	1.02	0.13	-0.65	-0.28	0.43	81.25	**
Wtree Dryfs Indn Rupee	ICN	B	B	-7.88	-9.82	-11.58	-10.63	-5.82	2.79	23.97	**
Wtree Dryfs S Africa Rand	SZR	B	B	-21.18	-13.58	-16.44	-15.36	-5.41	4.15	24.21	**
PS VRDO Tax Free Wkly	PVI	B	B	0.04	0.04	0.04	-0.04	0.00	0.02	25.00	*
Wtree Dryfs Comdty Cur	CCX	B	B	2.92	-2.69	-7.08	-7.61	-2.80	NA	25.73	*

ETF data on pages 3, 7, 8, and 9 are for the periods shown (12months, 9, 6, 3, and 1) through the previous month's close. Generally, we want to own the top ranked ETFs (shown in green) and avoid or short the lower ranked ETFs (shown in red).

This is the ETF Income Database and Ranking. It shows performance over the last 12, 9, 6, 3, and 1 months through the previous month's end. V is Volatility. NAV is price. CS is Comet Strength (not shown). C is Comet (not shown), which is an ETF's risk-adjusted performance; the higher the better. V, CS, and C are proprietary tools. Rank column shows the number of comets.

SLM Bond Timing Model



The SLM Bond Timing Model is based on the expected direction of the Corporate Bond market. The green bars are bullish (expect higher prices and lower yields) and the red bars are bearish (expect lower prices and higher yields). White spaces indicate that the previous signal is still in effect.

WEEKLY REVIEW

12/5 Even though the Bond Timing Model shifted to bearish based on trends, I am still on a bullish buy.

11/28 Still on a buy corporate bond signal.

11/21 Corporate bonds have come down into a buy zone. See the Portfolio page for a buy signal.

11/14 Still more whipsaws as investors trade the news out of Europe. But our economy continues to muddle along, confirming the long-term trend down in interest rates.

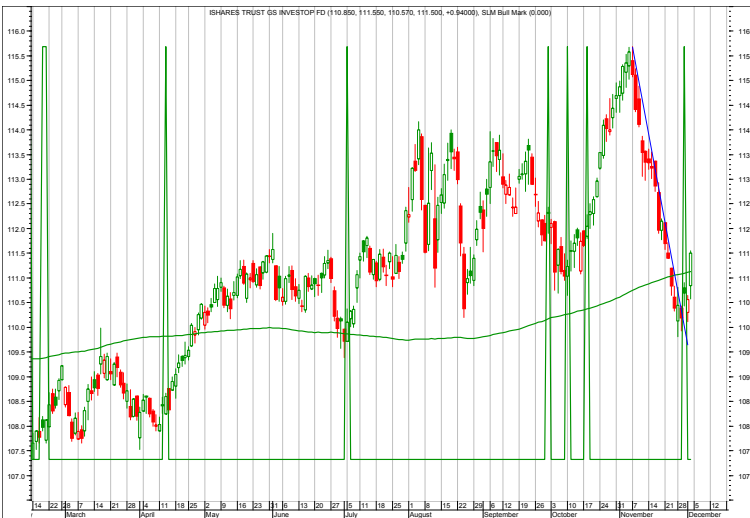
11/4 Whole lotta whipsaws going on. Whipsaws are short-term trades in and out of the market due to volatility without a clear trend. Long-term, however, the trend is still up for bond prices and down for yields.

Income Charts



AGG—Aggregate Bond Market

12/5 No change, but the uptrend was broken.
 11/28 No change.
 11/21 No change.
 11/14 No change.
 11/4 No changes.
 10/31 Bouncing off support. (See also page 12 for more information.)
 10/24 Around good support.
 10/3 Time to nibble with close stops.
 9/26 Was the Treasury Bond market parabolic? It looks like it. Monitor the trends.
 9/16 At support.



LQD—Corporate Bonds

12/5 So far so good.
 11/28 Still a good buying opportunity.
 11/21 LQD has sharply corrected to a good entry area. See the Portfolio.



BAB—Build America Bonds

12/5 No change.
 11/28 No change.
 11/21 No change.

Each chart shows daily prices (top portion), volume (bottom portion), a moving average (smoothed red line on price portion, a relative strength indicator between the ETF and AGG (Aggregated bond ETF) (orange line), and red spikes. The spikes show potential places to buy and sell short. If the moving average is trending down, the spike shows a potential sell shorts. If the moving average is trending up, the spike shows potential buys. The charts do not show selling or covering signals.

Growth Portfolio

ACTION FOR			PORTFOLIO DETAILS				Value as of date:		12/2/2011				
Action Date	Action	Symbol	Action Price	# of Shares	Action Value	Symbol	Closing Stop as of 12/5	Description	Start Price	Ending Price	# of Shares	Current Value	Percent of Total
						LONG ETFs-							
3-Oct	short	EWP	30.94	(100)	(3,104)	QQQ	52.50		54.72	56.61	1,000	56,610.00	48.7%
3-Oct	sell	QQQ	51.14	220	11,241	DGL	58.00	Gold			100	-	0.0%
10-Oct	cover	EWP	34.75	100	3,485								
28-Nov	buy	QQQ	54.72	1,000	54,730								
5-Dec	buy	DGL		100	about 5%								
						SHORT ETFs-							
						Cash from short Money Market							
									1.00			-	0.0%
									1.00		59,622	59,622.00	51.3%
								Total Valuation=				116,232.00	100.0%

WEEKLY REVIEW

12/5 We're in the bounce mentioned last week. Will watch for resistance. Please watch for possible emails this week for updates.

11/28 I will buy for the bounce back into resistance.

11/21 No change. Still in cash, waiting for a pullback.

11/14 No change.

11/4 No changes.

10/31 No changes. Will wait for a pullback to enter.

10/24 After confirming a down market, the market turned and rallied the last couple weeks without us. It now closes in on its descending 200-day moving average (see chart page 1). No changes.

Performance	2010	2011	Incptn
ETF Growth Portfolio	8.1	7.6	16.2
Wilshire 5000 TR	17.7	-0.4	17.2

Top ETF Growth Ranking to 11/30/11 (month end)

Fund Name	Symbol	Style	Hybrid						NAV	Rank	
			Equity Bond	12m	9m	6m	3m	1m			V
Guggnhm Dfnsv Eqty	DEF	EV	E	10.92	3.88	-1.23	3.24	-0.29	2.32	26.53	*****
iShares Gold	IAU	EG	E	25.81	23.71	13.81	-4.26	1.73	5.32	17.06	*****
PS DB Gold	DGL	EG	E	24.48	22.78	13.28	-4.45	1.50	5.23	61.01	*****
PS Dynmc Pharma	PJP	EA	E	21.90	17.02	0.44	5.59	2.33	4.15	27.22	*****
Select SPDR Cnsmr Stpl	XLP	EA	E	12.64	7.34	-1.27	3.27	2.77	2.84	31.90	*****
Select SPDR Utilities	XLU	EA	E	14.47	9.65	3.96	3.89	1.03	1.80	35.21	*****
SPDR Gold	GLD	EG	E	25.63	23.59	13.69	-4.27	1.67	5.30	170.13	*****
Vngrd Cnsmr Stpls	VDC	EA	E	12.61	9.44	-0.55	2.94	2.03	2.65	81.27	*****
Vngrd Utilities	VPU	ELC	E	14.30	8.58	3.06	3.63	1.07	1.82	75.09	*****
Wtree Eqty Income	DHS	EGI	E	11.43	3.55	-2.16	3.63	1.24	2.80	41.71	*****
Guggnhm Spin Off	CSD	EMC	E	7.19	-2.24	-6.74	4.01	1.22	4.02	23.11	****
iShares DJ Slct Div	DVY	EGI	E	10.62	2.81	-2.37	3.67	1.38	2.86	52.83	****
PS Buyback Achievers	PKW	EGI	E	12.47	1.27	-3.81	6.57	1.04	3.83	26.24	****
PS DB Energy	DBE	EA	E	14.90	-5.27	-8.10	-2.91	1.47	5.47	28.38	****
PS DB Oil	DBO	EA	E	11.46	-4.37	-6.58	9.33	8.92	6.60	28.70	****
PS DB Precious Metals	DBP	EG	E	22.67	16.80	6.47	-8.18	0.59	7.27	61.19	****
PS Dividend Achievers	PFM	EGI	E	9.18	0.82	-2.90	3.80	1.30	2.95	14.75	****
PS Dynmc Cnsmr Staples	PSL	EA	E	8.77	4.18	-5.49	0.57	-1.68	3.39	30.39	****
PS Dynmc Lrg Cap Value	PWV	ELC	E	7.12	-3.44	-6.74	4.24	0.26	3.55	18.95	****
PS Dynmc Retail	PMR	EA	E	9.88	6.08	-1.57	7.39	-1.02	4.66	21.28	****
PS Hi Yld Eqty Div	PEY	EGI	E	6.38	1.58	0.00	6.63	1.24	2.71	9.01	****
PS Mega Cap	PMA	ELC	E	8.37	-2.81	-4.92	2.37	-2.12	3.63	25.90	****
PS S&P 500 BuyWrite	PBP	ELC	E	-2.96	-1.37	-2.96	7.38	2.10	2.56	20.95	****
PS S&P 500 High Qlty	PIV	ELC	E	8.55	-0.29	-4.52	4.49	0.72	3.49	13.96	****
PS S&P SmlCap Cnsmr Stpl	PSCC	EA	E	9.43	3.29	-7.21	-0.52	-0.61	3.66	30.74	****
PS S&P SmlCap Energy	PSCE	EA	E	14.66	-11.10	-11.40	5.48	3.75	9.79	34.83	****
PS S&P SmlCap Hlth Care	PSCH	EA	E	21.93	5.80	-8.94	5.76	3.19	5.43	31.38	****
PS S&P SmlCap Utilities	PSCU	EA	E	8.76	5.36	-1.63	0.50	-0.40	2.69	30.06	****
Select SPDR Cnsmr Disc	XLY	EA	E	7.16	-1.70	-4.20	3.11	-0.72	4.06	38.74	****
Select SPDR Div	SDY	EGI	E	6.22	-0.35	-2.82	3.82	1.30	2.90	53.80	****
Select SPDR Health	XLV	EA	E	11.93	3.71	-6.18	1.44	0.95	3.40	33.88	****
Select SPDR Technlgy	XLK	EA	E	6.97	-3.54	-3.17	4.83	-1.50	3.90	25.62	****
SPDR DJ Industrials	DIA	ELC	E	9.10	-1.60	-4.23	3.66	0.71	3.55	120.19	****
SPDR NASDAQ 100	QQQ_O	ELC	E	8.27	-2.39	-3.38	2.42	-2.69	4.09	56.39	****
Vngrd Cnsmr Dis	VCR	EA	E	6.19	-1.76	-5.19	3.00	-1.40	4.36	62.11	****
Vngrd Div Apprctn	VIG	EGI	E	8.34	-1.38	-4.02	4.05	1.87	3.46	54.44	****
Vngrd Grth	VUG	ELC	E	6.70	-3.11	-5.33	2.84	-0.21	3.85	62.30	****
Vngrd Health	VHT	EA	E	11.71	3.40	-6.86	1.80	0.93	3.54	60.66	****
Vngrd Tech	VGT	EA	E	6.59	-4.64	-3.89	5.51	-1.99	4.38	62.46	****
Wtree Div Ex Fincl	DTN	ELC	E	11.42	2.69	-2.89	4.03	1.37	3.04	51.14	****
Wtree LrgCap Div	DLN	ELC	E	9.88	-0.48	-3.90	3.62	1.05	3.13	48.06	****

This page shows the top ranked ETF Growth Database. It shows performance over the last 12, 9, 6, 3, and 1 months through the previous month's end. V is Volatility. NAV is price. CS is Comet Strength (not shown). C is Comet, which is an ETF's risk-adjusted performance; the higher the better (not shown). This gives us the Rank column (shown).

Generally speaking, we want to own the top-ranked ETFs with 5 and 4 comets. (Comets, not stars, because unlike stars that are fixed, comets come into and out of prominence. We want our thinking, our metaphor aligning with reality.

Middle ETF Growth Ranking to same month end

Fund Name	Symbol	Style	Hybrid Equity Bond	12m	9m	6m	3m	1m	V	NAV	Rank
Guggnhm BRIC	EEB	EW	E	-14.36	-16.67	-17.49	-7.99	-3.98	5.39	37.88	***
Guggnhm Candn Enrg Incm	ENY	EWR	E	-9.88	-29.06	-24.30	-8.79	-1.59	7.52	16.70	***
Guggnhm China All	YAO	EWR	E	-16.61	-14.03	-19.90	-7.86	-1.22	5.89	23.10	***
Guggnhm Euro-Pac	EEN	EW	E	-10.12	-13.39	-19.16	-8.23	15.92	5.63	17.40	***
Guggnhm Gbl Div	LVL	EW	E	-1.66	-12.28	-15.48	-4.75	-1.35	5.12	13.65	***
Guggnhm Gbl Wtr	CGW	EW	E	0.62	-6.10	-11.62	-2.20	-0.71	3.96	19.55	***
Guggnhm Inscr Sent	NFO	EMC	E	3.01	-7.26	-12.90	-0.35	-1.71	5.34	31.53	***
Guggnhm Intrntl A Incm	HGI	EW	E	-9.82	-16.45	-17.43	-6.35	-2.13	4.95	16.53	***
Guggnhm MidCap Core	CZA	EMC	E	5.83	-4.38	-8.89	2.28	-0.47	4.27	29.22	***
Guggnhm Multi Ast In	CVY	EV	E	3.83	-4.47	-7.71	-0.54	-0.83	3.18	20.31	***
Guggnhm Ocn Grth	OTR	ELC	E	5.59	-3.28	-6.57	-2.01	-3.31	3.57	28.32	***
Guggnhm Ocn Tomo	OTP	ELC	E	0.89	-10.86	-11.69	0.90	-2.47	4.45	24.40	***
Guggnhm RJ All	RYJ	ELC	E	4.85	-10.01	-12.15	1.96	-1.89	5.67	20.31	***
Guggnhm Sctr Rotn	XRO	ELC	E	-4.47	-10.67	-14.47	-1.08	-1.63	5.03	23.12	***
iShares China	FXI	EW	E	-16.43	-14.67	-20.17	-6.24	0.44	5.31	36.22	***
iShares Cohen&Str REIT	ICF	ERE	E	7.14	-5.58	-10.51	-3.15	-4.00	4.99	67.67	***
iShares EAFE Indx	EFA	EW	E	-5.57	-16.75	-17.43	-4.35	-2.18	5.24	51.24	***
iShares Emrg Mrkt Stk	EEM	EW	E	-10.65	-12.62	-17.56	-6.41	-1.97	5.89	40.01	***
iShares Europe 350	IEV	EW	E	-4.56	-17.86	-20.80	-4.01	-3.07	6.55	34.72	***
iShares Latin Amr	ILF	EW	E	-14.65	-16.47	-16.72	-7.35	-4.11	5.63	43.62	***
iShares Mexico	EWX	EW	E	-6.89	-9.96	-11.75	-6.38	-0.45	4.89	55.03	***
iShares REIT	IYR	ERE	E	1.95	-8.98	-12.20	-3.64	-3.67	4.43	55.14	***
iShares Russel 2000	IWM	ESC	E	1.35	-10.38	-13.10	1.49	-0.38	5.46	73.73	***
iShares Russel MidVal	IWS	EV	E	2.42	-9.40	-11.97	1.15	-0.60	4.37	43.16	***
iShares Silver	SLV	EG	E	16.62	-3.35	-14.89	-20.89	-4.31	14.36	32.00	***
iShares Sltc Div	IDV	ELC	E	-2.48	-14.05	-16.85	-5.91	-3.22	5.54	30.70	***
iShares Spain	EWP	EW	E	-4.86	-21.78	-23.92	-8.46	-6.67	7.61	32.89	***
PS Aerospace & Def	PPA	EA	E	1.15	-9.75	-10.78	2.56	-0.44	4.26	18.05	***
PS BLDR Dvlpd Mrkt 100 ADR	ADRD	EW	E	-4.10	-17.01	-15.95	-3.17	-2.98	5.50	19.18	***
PS BLDR Emrg Mkt 50 ADR	ADRE	EW	E	-11.38	-14.82	-15.25	-5.90	-2.45	4.98	39.89	***
PS BLDR Europe 100 ADR	ADRU	EW	E	-5.24	-8.55	-15.50	-6.79	14.30	5.96	19.90	***
PS Cleantech	PZD	EA	E	-7.13	-19.35	-22.84	-8.62	-2.22	5.82	22.47	***
PS DB Agriculture	DBA	EA	E	-0.34	-17.10	-11.43	-15.01	-4.67	4.81	28.99	***
PS DB Base Metals	DBB	EG	E	-6.99	-21.22	-16.79	-14.03	-0.65	5.59	19.97	***
PS DB Commodity	DBC	EA	E	10.25	-7.00	-8.63	-8.36	-0.29	5.02	27.64	***
PS DB Silver	DBS	EG	E	15.52	-3.32	-15.06	-21.16	-4.15	14.50	57.39	***
PS DWA Dvlpd Mrkt T Ldrs	PIZ	ELC	E	-10.51	-18.16	-21.25	-8.59	-1.98	5.87	18.30	***
PS DWA Emrg Mrkt T Ldrs	PIE	EW	E	-6.16	-4.81	-12.46	-9.17	0.98	6.15	16.44	***
PS DWA Tech Ldr	PDP	ELC	E	6.93	-3.16	-8.12	-0.37	0.46	4.23	24.21	***
PS Dyn Dvlp Intrnl Opp	PFA	EW	E	-8.02	-19.85	-20.98	-8.74	-3.38	5.41	15.14	***
PS Dyn MagniQuant	PIQ	ELC	E	-0.30	-9.44	-12.60	-0.85	-2.75	5.34	23.30	***
PS Dyn Mrkt	PWC	ELC	E	-4.37	-13.46	-15.49	-1.73	-3.14	4.86	40.44	***
PS Dyn OTC	PWO	ESC	E	-5.47	-13.63	-16.80	-2.05	-5.23	5.02	44.41	***
PS Dynmc Banking	PJB	EA	E	-5.39	-14.89	-11.18	7.07	0.72	4.53	11.20	***
PS Dynmc Basic Matrl	PYZ	EA	E	-3.93	-13.26	-18.78	-5.05	-1.19	6.18	32.50	***
PS Dynmc Biotech	PBE	EA	E	-2.84	-7.18	-16.03	-1.16	-3.89	5.01	19.53	***
PS Dynmc Bldg Cnstrctn	PKB	EA	E	-6.05	-15.47	-14.97	2.11	-1.10	5.44	11.64	***
PS Dynmc Consmr Discr	PEZ	EA	E	-0.48	-3.65	-9.05	-0.24	-3.80	4.99	24.82	***
PS Dynmc Energy	PXI	EA	E	11.38	-8.46	-9.44	1.15	0.03	7.47	38.75	***
PS Dynmc Energy Explor	PXE	EA	E	9.07	-14.30	-12.37	-1.88	-0.86	7.68	22.96	***
PS Dynmc Fncl	PFI	EA	E	-0.37	-12.20	-11.37	1.73	-1.56	4.36	17.63	***
PS Dynmc Food & Bev	PBJ	EA	E	5.43	1.73	-7.75	-2.54	-1.21	3.70	18.82	***
PS Dynmc Healthcare	PTH	EA	E	10.84	-0.45	-11.52	1.05	-0.52	4.57	28.25	***
PS Dynmc Indstrls	PRN	EA	E	-1.15	-12.43	-14.57	1.90	-1.29	5.96	27.09	***
PS Dynmc Leisure & Enter	PEJ	EA	E	0.83	-2.98	-7.92	-1.35	-1.14	4.70	18.25	***
PS Dynmc Lrg Cap Grth	PWB	ELC	E	3.91	-4.14	-7.16	2.92	0.25	4.20	16.20	***
PS Dynmc Media	PBS	EA	E	-2.21	-15.98	-17.17	-2.88	-3.53	5.54	12.83	***
PS Dynmc Networking	PXQ	EA	E	2.94	-11.72	-11.69	11.65	1.46	6.65	25.34	***
PS Dynmc Oil & Gas Srvc	PXJ	EA	E	4.13	-15.43	-14.71	-1.72	2.72	9.34	21.16	***

This shows the ETF Growth Database and Ranking. It shows performance over the last 12, 9, 6, 3, and 1 months through the previous month's end. V is Volatility. NAV is price. Rank shows the number of comets from 5 to 1. The larger the better.

Middle ETF Growth Ranking to same month end

Fund Name	Symbol	Style	Hybrid	12m	9m	6m	3m	1m	V	NAV	Rank
			Equity Bond								
PS Dynmc Semicndctr	PSI	EA	E	-8.42	-21.87	-22.18	4.29	-4.26	7.71	13.93	***
PS Dynmc Software	PSJ	EA	E	2.20	-8.88	-9.49	6.80	-2.47	4.74	24.26	***
PS Dynmc Technology	PTF	EA	E	1.21	-7.58	-12.31	-2.10	16.06	5.88	24.28	***
PS Dynmc Utilities	PUI	EA	E	6.31	-0.37	-7.89	0.06	0.58	2.57	16.17	***
PS FTSE RAFI Asia Pac xJpn	PAF	EW	E	-1.90	-8.80	-15.59	-4.69	-1.46	5.99	50.20	***
PS FTSE RAFI Dvlp Mrkt xUSA	PXF	EW	E	-8.81	-19.66	-19.85	-4.27	-2.22	5.82	33.84	***
PS FTSE RAFI Dvlp Mrkt xUSA Sml	PDN	EW	E	-4.27	-14.85	-15.15	-7.44	-2.18	4.45	21.51	***
PS FTSE RAFI Emrg Mrkt	PXH	EW	E	-13.11	-17.08	-18.57	-7.12	-2.39	5.36	21.27	***
PS FTSE RAFI US 1500 Sml-Mid	PRFZ	EMC	E	0.07	-12.38	-13.59	1.06	-1.04	5.45	59.87	***
PS Gbl Agriculture	PAGG	EA	E	-5.14	-15.55	-15.78	-11.55	-5.02	5.62	28.03	***
PS Gbl Coal	PKOL	EA	E	-20.88	-26.40	-25.38	-12.16	-4.99	7.69	27.02	***
PS Gbl Gold Precious Mtls	PSAU	EG	E	-5.49	-5.57	-3.92	-8.53	1.49	6.36	45.80	***
PS Ibtstn Altrntv	PTO	ELC	E	-1.73	-4.68	-7.66	-5.95	-2.35	2.71	11.22	***
PS Intrntl Dvnd	PID	EW	E	0.68	-7.82	-11.21	-3.14	-3.16	4.26	14.73	***
PS Mrngstr Stk	PYH	ELC	E	5.22	-4.54	-9.43	-2.44	9.31	3.91	19.97	***
PS NASDAQ Intrnt	PNQI	EA	E	0.38	-5.43	-12.29	-5.76	-3.59	5.80	34.69	***
PS RvrFrnt Tac Bal	PAO	EGI	E	-5.92	-12.26	-13.91	-3.38	-1.55	3.56	11.45	***
PS RvrFrnt Tac G&I	PCA	EGI	E	-2.86	-7.01	-8.68	-2.16	-2.48	2.55	12.21	***
PS S&P SmlCap Cnsmr Dis	PSCD	EA	E	-2.04	-5.24	-11.42	0.53	-3.01	5.64	26.38	***
PS S&P SmlCap Fincl	PSCF	EA	E	4.52	-6.80	-7.92	2.41	-1.53	4.28	26.10	***
PS S&P SmlCap Indstrils	PSCI	EA	E	0.30	-9.79	-10.81	1.12	-1.34	5.59	26.91	***
PS S&P SmlCap Info Tech	PSCT	EA	E	2.84	-11.39	-12.91	6.95	-0.21	6.32	27.85	***
PS S&P SmlCap Mtrls	PSCM	EA	E	-4.80	-11.54	-14.45	-2.18	-2.48	5.07	25.61	***
PS US REIT	PSR	ERE	E	8.75	-2.77	-8.11	-2.18	-4.51	4.49	48.47	***
PS Water Resources	PHO	EA	E	-2.88	-12.65	-13.57	0.00	0.53	5.15	17.20	***
PS WilderHill Prgsv Enrgy	PUW	EA	E	-12.28	-22.34	-21.10	-3.96	-3.19	6.43	23.05	***
PS Zacks Micro Cap	PZI	ESC	E	-7.59	-18.09	-17.15	0.60	-0.98	5.98	10.10	***
Select SPDR Enrgy	XLE	EA	E	13.01	-9.77	-8.09	3.25	1.66	6.70	70.87	***
Select SPDR Indl	XLI	EA	E	3.93	-8.43	-9.94	4.60	1.41	5.03	33.89	***
Select SPDR Matrils	XLB	EA	E	-1.90	-12.52	-13.16	-2.32	0.20	5.13	34.52	***
SPDR DJ Gbl Titans	DGT	EW	E	-5.62	-16.53	-15.30	-3.35	-1.92	4.76	51.61	***
SPDR Euro Stoxx 50	FEZ	EW	E	-8.84	-24.24	-25.51	-4.99	-3.90	7.96	31.03	***
SPDR S&P 500	SPY	ELC	E	5.48	-6.13	-7.35	2.27	-0.41	3.80	124.99	***
SPDR Wish REIT	RWR	ERE	E	5.70	-5.93	-10.50	-3.01	-3.95	4.85	62.15	***
Vngrd Emrg Mrkt	VWO	EW	E	-10.36	-12.04	-16.88	-7.08	-1.71	5.68	40.82	***
Vngrd Extnd 4500	VXF	ELC	E	2.44	-9.37	-12.40	1.08	-0.55	5.17	52.44	***
Vngrd Fincl Srv	VFH	EA	E	-9.29	-21.57	-18.19	-3.86	-4.27	5.01	27.16	***
Vngrd Large Cap	VV	ELC	E	5.31	-6.35	-7.84	1.98	-0.44	3.88	57.10	***
Vngrd Materials	VAW	ELC	E	-0.62	-10.26	-12.26	-1.43	0.54	5.46	76.45	***
Vngrd MidCap Val	VO	EMC	E	3.79	-7.63	-11.18	1.27	-0.62	4.67	73.17	***
Vngrd Small Cap	VB	ESC	E	3.39	-8.73	-11.64	2.18	-0.44	5.34	70.44	***
Vngrd Small Cap Grth	VBK	ESC	E	6.37	-7.67	-11.91	2.32	-0.66	5.85	77.23	***
Vngrd Small Cap Value	VBR	ESC	E	0.40	-9.81	-11.26	2.11	-0.14	4.80	63.51	***
Vngrd TTL Stock	VTI	ELC	E	4.93	-6.80	-8.45	2.01	-0.37	3.99	64.04	***
Wtree DEFA	DWM	EW	E	-3.72	-15.38	-17.39	-5.16	-2.14	5.33	42.47	***
Wtree DEFA Eqty Incm	DTH	EW	E	-1.51	-14.73	-17.32	-4.59	-3.70	6.07	37.81	***
Wtree Emrg Mrkt Eincm	DEM	EW	E	-6.41	-9.78	-16.40	-8.66	-0.46	5.18	52.39	***
Wtree Emrg Mrkt SC Div	DGS	EW	E	-16.45	-15.05	-21.90	-10.50	-1.48	6.29	42.72	***
Wtree Eur SC Div	DFE	EW	E	-11.15	-23.63	-27.01	-10.40	-6.38	7.11	33.78	***
Wtree Gbl Eqty Incm	DEW	EW	E	-2.17	-12.38	-15.02	-5.29	-3.15	4.99	39.21	***
Wtree Intrntl Div Ex Fincl	DOO	EW	E	-0.98	-12.16	-15.93	-3.53	-1.77	5.44	41.03	***
Wtree Intrntl LC Div	DOL	EW	E	-3.40	-15.19	-16.59	-3.74	-2.74	5.76	41.14	***
Wtree Intrntl MC Div	DIM	EW	E	-7.79	-18.25	-19.63	-8.42	-4.05	5.37	44.40	***
Wtree Intrntl SC Div	DLS	EW	E	-3.89	-15.05	-16.35	-6.79	-1.75	4.59	45.27	***
Wtree Intrntl Utilities	DBU	EA	E	-4.94	-16.36	-15.87	-7.29	-1.80	4.88	18.18	***
Wtree Japan SC Div	DFJ	EWR	E	4.80	-8.62	0.95	-3.02	2.25	3.27	42.33	***
Wtree LrgCap Grth	ROI	ELC	E	1.97	-7.97	-7.92	1.09	-2.16	4.24	35.75	***
Wtree MidCap Div	DON	EMC	E	5.91	-4.62	-8.60	0.99	-0.39	3.79	51.23	***
Wtree MidCap Earn	EZM	EMC	E	5.09	-6.90	-10.36	1.98	-0.74	5.03	53.50	***
Wtree Middle East Div	GULF	EW	E	-7.13	-3.81	-8.21	0.00	1.14	3.71	15.10	***
Wtree S&P 500	EPS	ELC	E	5.18	-5.55	-6.63	2.63	-1.26	3.67	43.22	***
Wtree Sml Cap Div	DES	ESC	E	-1.02	-8.22	-9.10	1.97	-0.16	4.11	44.43	***
Wtree Ttl Earn	EXT	ELC	E	4.90	-6.08	-7.32	2.31	-1.14	3.83	44.30	***
Wtree World Ex US Grth	DNL	EW	E	-7.80	-12.52	-17.51	-8.80	-1.86	5.49	47.49	***

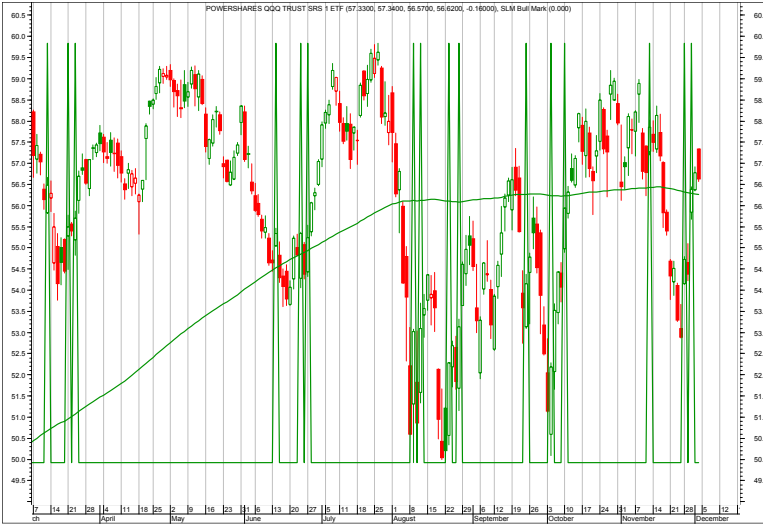
This shows the ETF Growth Database and Ranking. It shows performance over the last 12, 9, 6, 3, and 1 months through the previous month's end. V is Volatility. NAV is price. Rank shows the number of comets from 5 to 1. The larger the better.

Bottom ETF Growth Ranking to same month end

Fund Name	Symbol	Style	Hybrid Equity Bond	12m	9m	6m	3m	1m	V	NAV	Rank
Guggnhm Airline	FAA	EA	E	-35.93	-28.61	-28.08	-7.64	-8.76	5.96	26.35	**
Guggnhm China REIT	TAO	EWR	E	-22.67	-18.14	-24.22	-14.93	-4.57	6.53	15.21	**
Guggnhm China Sml	HAO	EWR	E	-30.06	-21.78	-24.97	-8.72	2.72	6.99	21.87	**
Guggnhm Frntr	FRN	EW	E	-19.21	-13.30	-16.89	-11.69	-4.05	4.76	19.07	**
Guggnhm Intrntl SmlCap	XGC	EW	E	-28.18	-29.75	-30.30	-18.32	-8.35	6.72	16.72	**
Guggnhm Shipping	SEA	EA	E	-47.91	-47.51	-41.82	-19.02	-11.26	6.13	14.35	**
Guggnhm Solar	TAN	EA	E	-55.18	-62.61	-59.01	-43.77	-12.29	11.40	3.07	**
Guggnhm Timber	CUT	EA	E	-13.21	-23.96	-24.26	-8.77	-2.36	5.67	16.95	**
iShares Canada	EWC	EW	E	-6.38	-18.44	-16.53	-8.13	-2.76	4.45	27.46	**
iShares Prfrd	PFF	EGI	E	-8.22	-9.01	-10.35	-4.85	-3.67	1.75	35.94	**
PS BLDR Asia 50 ADR	ADRA	EW	E	-11.53	-19.10	-15.30	-5.59	-1.91	4.17	23.63	**
PS Emrg Mrkt Infrastrctr	PXR	EW	E	-21.77	-24.13	-28.36	-13.48	-5.18	7.49	38.77	**
PS Fincl Pfd	PGF	EGI	E	-7.88	-9.52	-11.37	-6.29	-4.13	2.05	16.25	**
PS Gbl Clean Enrgy	PBD	EW	E	-29.88	-36.95	-37.29	-19.42	-6.55	7.41	9.13	**
PS Gbl Listd Prvt Eqty	PSP	EW	E	-20.25	-28.51	-30.70	-10.44	-6.86	7.15	8.15	**
PS Gbl Nuclr Enrgy	PKN	EW	E	-18.20	-24.86	-16.67	-3.00	-1.82	5.37	16.50	**
PS Gbl Steel	PSTL	EA	E	-25.39	-34.21	-29.56	-15.75	-7.18	6.48	15.78	**
PS Gbl Water	PIO	EW	E	-10.74	-18.02	-21.70	-7.09	-3.19	5.05	16.38	**
PS Gbl Wind Energy	PWND	EW	E	-20.15	-28.46	-31.03	-13.83	-5.69	6.69	7.29	**
PS Gldn Drgn USX China	PGJ	EW	E	-20.15	-21.85	-22.08	-12.39	-3.14	5.75	21.28	**
PS India	PIN	EW	E	-23.18	-17.97	-21.16	-11.75	-9.12	6.86	18.03	**
PS Lux Nanotech	PXN	EA	E	-35.93	-39.06	-32.25	-14.38	-2.50	6.17	6.24	**
PS MENA Frntr Countries	PMNA	EW	E	-19.06	-13.44	-13.77	-5.83	-4.14	3.33	10.83	**
PS WilderHill Cln Enrgy	PBW	EA	E	-42.56	-48.70	-42.20	-23.86	-8.46	7.60	5.52	**
Select SPDR Financs	XLF	EA	E	-11.41	-23.98	-19.13	-4.26	-5.08	5.15	12.81	**
Wtree India	EPI	EWR	E	-29.50	-22.25	-25.49	-15.44	-12.26	7.48	17.54	**
Wtree Intrntl REIT	DRW	ERE	E	-13.11	-16.58	-19.55	-9.29	-1.61	4.88	24.40	**
Wtree Japan Hedge Eqty	DXJ	EC	E	-12.08	-20.26	-10.40	-2.57	-0.43	3.01	32.23	**

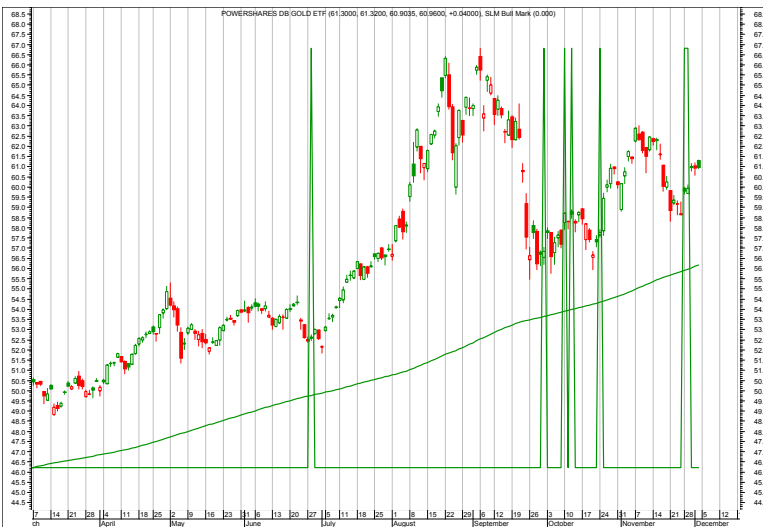
This shows the ETF Growth Database and Ranking. It shows performance over the last 12, 9, 6, 3, and 1 months through the previous month's end. V is Volatility. NAV is price. Rank shows the number of comets from 5 to 1. The larger the better.

Growth Charts



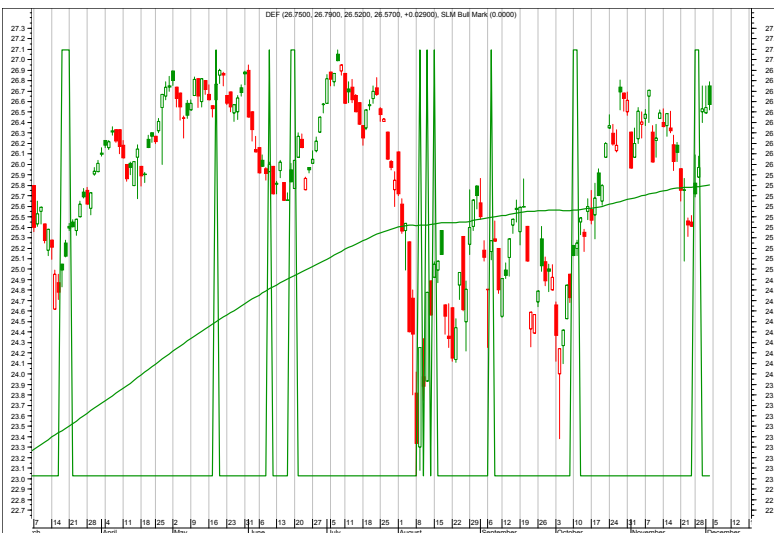
QQQ—OTC

12/5 We're in the resistance zone of 57-58. So watch for a potential turn.
11/28 Buying for a bounce back to 57-58 (about 6%).



DGL—Gold

12/5 Given coordinated easing from central banks around the world, we have a buy signal on DGL. See the Growth Portfolio on page 6.
11/28 No change.
11/21 Another example of buy signals on a higher ranked ETF.



DEF—Defensive Equity

12/5 Back to resistance at previous highs.

Each chart shows daily prices (top portion), volume (bottom portion), a moving average (smoothed red line on price portion), a relative performance indicator between the ETF and S&P 500 (orange line), and red spikes. The spikes show potential buy and sell short signals. Generally speaking, if the moving average is trending down, the spike shows a potential sell short. If the moving average is trending up, but the ETF declines, the spike shows a potential buy. The charts do not show selling or covering signals.

Overflow from Page 1, Definitions, and Newsletter Updates

(Continued from page 1) **REVIEW**

remarkable because it implies things like the economy and asset valuations are really fairly bad out there. To heck with inflation and the value of the dollar, they are implying, let's just get things going again seems to be the message.

But, on the other hand, as many of us know on a micro level, if you've ever refinanced your home or moved credit card debt from one card to another to lower your interest costs, you know it actually helps. (It helps, assuming you don't keep piling on the debt. And this, on a country level, is where those yackity politicians reenter the picture. They can talk all they want, but eventually, the road called Fiscal Responsibility down which they kick the can will dead end.)

Anyway, the other thing this easing does, which is most likely the key objective, is to make an

asset's cash flows more valuable. In turn this helps stabilize the asset value. It works just like a bond. A bond with a coupon of 10% will be higher priced than a bond with a coupon of 5% (all other things being equal). With a house, the rent is, say \$1,000/month, but if your cost to buy that drops, the value at least stays the same, if not increases.

Additionally, if stock prices rise, it allows some companies to issue stock that may be used to refinance debt.

All of the positives from this easing, however, still depends on two things. As mentioned, the politicians must still grapple with deficit spending and tax policy. These items must be handled. Also, there is the assumption that we (America), and everyone else, will not enter a recession going forward. A recession hurts cash flow. Among other things, it ends as businesses close or peo-

ple move.

So, how does all of this impact the stock and bond and gold markets?

For all three markets, the initial reaction has been up in price the past week. Indeed from the first quantitative easing (QE I) from the Fed back in November 2008, after a four-month lag, stocks moved higher. GLD (gold etf) has moved from \$75 to \$168. Interest rates have dropped and bond prices increased. For QE II the impact has been less dramatic, but still positive. So, this round of easing should also eventually be positive.

In the meantime, there are no changes to the two portfolios. We have bounced back towards the top of the previous trading range as you can see on the chart on page 1. So, I am watching for a pullback here, but will look to reenter or buy more on any weakness.

Just to clarify a couple of terms that I use.

Short-term is days to weeks.

Intermediate-term is weeks to months.

Long-term is months to years.

Bull market is a series of higher highs and higher lows.

Bear market is a series of lower lows and lower highs.

Neutral market is sideways without a discernible pattern.

12/5/11 No changes.

11/28/11 No changes.

11/21/11 No updates.

11/14/11 Added a couple of new dividend-oriented ETFs to the database (VIG and SDY). Also began work on the new short-term sell timing model (see bottom chart on page 11 for an example). I hope to have the selection and timing models combined into one model by the New Year.

11/4/11 Work on the new short-term timing model continues.

Descriptions & Disclosures

PORTFOLIO DESCRIPTIONS (pages 2 and 6)

Our guiding goal is to provide the most return with the least risk consistently over time through bull and bear markets.

Income Portfolio, page 2: Uses a proprietary selection methodology on all of the monitored bond-oriented ETFs to pick the top ETFs. I then use a proprietary timing model to decide whether to buy, sell, hold, or avoid.

Growth Portfolio, page 6: Uses the same methodologies as in the Income Portfolio, except as it is applied to stock-oriented ETFs.

All portfolios were started on 1/1/10 with \$100,000.

Portfolio changes will usually be made at the close on Monday, unless otherwise noted in any emailed hotline update or triggered stop orders. Issues are normally posted on Mondays by 1:35pm cst.

Portfolios are updated through the Friday close the week before.

Dividends are reinvested in additional shares. Commissions of \$10/trade and short-term redemption charges, if any, are applied.

Interest is zero for the money market (cash) position.

SUBSCRIPTIONS: To receive *ETF Selections & Timing*, you may subscribe in one of three ways. You may subscribe on the web site InvestmentST.com using PayPal or call 1-800-800-6563 for Visa, MasterCard, or Discover orders or send a check to the address on the front page. Subscriptions may be tax deductible.

The recurring monthly subscription is \$24.00. An annual subscription is \$240.00. Subscribers receive this weekly eNewsletter. There is no mailed issue. Subscribers retrieve the current weekly issue at the web site InvestmentST.com by logging in using a log in name and password.

Unless otherwise noted, the weekly eNewsletter is posted by 1:35 PM central time each Monday, except for holidays and then on Tuesday. It may contain actionable, specific buy or sell advice to take that day at the Monday close in each portfolio. We may also use stop orders. For stops, check the ETF at quarter to the close. If it is below (or above) a stop level, assume it will close there and act on that. Portfolio data will be updated through the previous Friday's close. Fund symbols, rather than names, are the official identification used for activity.

GUARANTEE: Subscriptions may be cancelled at any time. Annual subscriptions are refundable for the weekly term remaining with a four-week minimum charge, using a 52-week count. Monthly subscriptions just expire.

PUBLISHER: Watercourse Way Holdings, LLC publishes this newsletter.

REPRINTS: This eNewsletter is intended for subscribers only, reprints are not permitted.

DISCLAIMER: The information contained herein is assembled from sources who are believed reliable, but the accuracy of data or advice cannot be guaranteed. Past performance does not guarantee future performance. Portfolio values include a commission of \$10/trade, dividend reinvestment, and short-term redemption charges. The Wilshire 5000 and Aggregate Bond are equity and bond indexes and may or may not be useful in comparing returns. Security values fluctuate. Information is provided without consideration for your personal situation. Watercourse Way Holdings, LLC its members and associates may or may not invest identically to or at the same time as portfolios or advice shown herein.

COPYRIGHT: Copyright, 2009-11, Watercourse Way Holdings, LLC. All rights reserved.