

ETF Selections & Timing

Watercourse Way Holdings, LLC

P.O. Box 830396
Richardson, TX 75083-0396
972-680-2366

InvestmentST.com

November 11, 2013 (data date through previous Friday close)

Volume 4
Issue 45

Maintaining

There has not been much economic, fundamental, or technical changes from last week. The only highlight is Fed tapering talk picking up again and the implications from it. Fed tapering is when they scale back their monthly bond buying program of longer-term

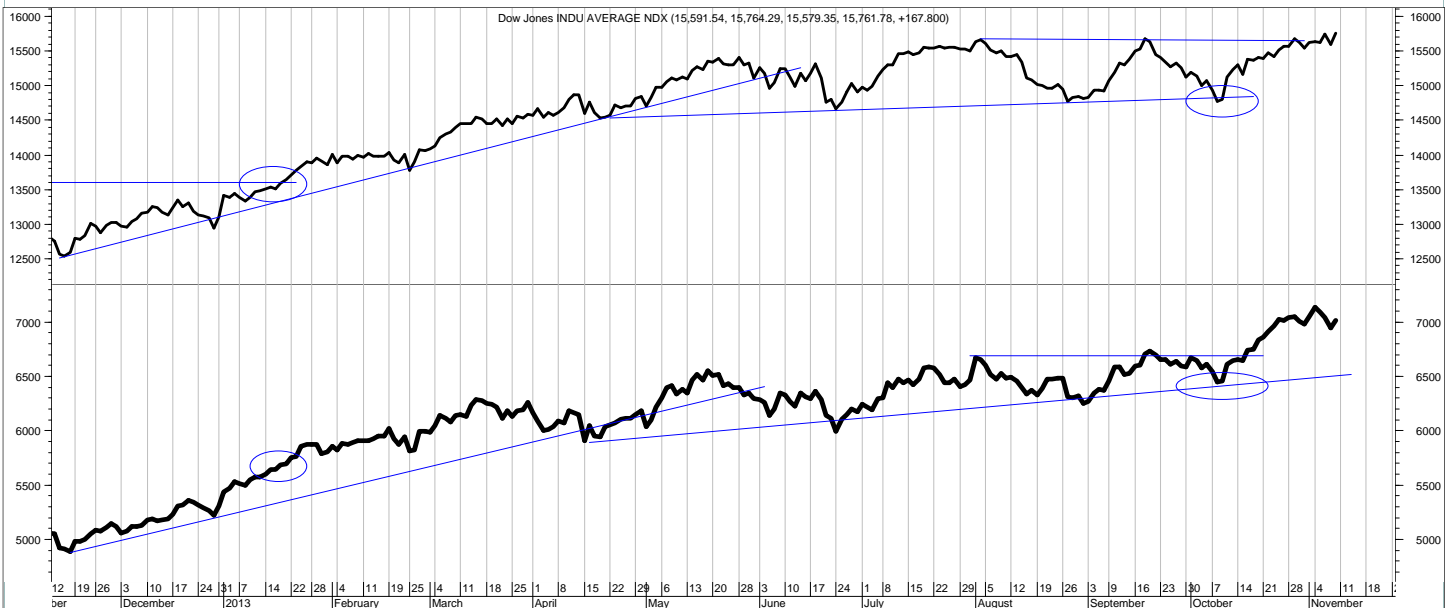
bonds. Even if they do this, they plan to keep short-term interest rates near zero percent.

It is interesting that what has been bad news is good news and vice-versa. In other words, the reason the Fed postponed any tapering was because of perceived economic weakness.

This would be bullish for bonds and should be bearish for stocks.

Instead, stocks have remained near their highs. The bad news of a weak economy translates into Fed's continued easing, which has helped stocks

(Continued on bottom right on page 12 see REVIEW on top)



This is the daily chart of the Dow Industrials (upper) and Dow Transports (lower)

SCOREBOARD (returns year to date and past weeks to date)

Model	YTD	52-week	26-week	13-week	4-week	1-week
ETF Income Portfolio	1.3%	0.9%	1.4	1.4	0.8	0.0%
ETF Growth Portfolio	24.0%	25.2%	9.7	7.5	0.8	0.0%
Index						
Aggrgt Bond (AGG)	-4.0%	-4.7%	-3.3	-0.3	-0.2	-0.6%
S&P 500 TR (SPY)	27.1%	29.7%	8.4	4.8	4.0	0.7%
World Growth Index	24.3%	29.0%	8.9	5.4	2.3	-0.1%

CONTENTS

Pages 2-5Income
Page 4Bond Model
Pages 6-11Growth
Page 12-13Overflow
Page 14Disclaimers

Income Portfolio

ACTION FOR			PORTFOLIO DETAILS			Value as of date: 11/8/2013							
Action Date	Action	Symbol	Action Price	# of Shares	Action Value	Symbol	Stop Loss as of 10/21	Description	Start Price	End Price	# of Shares	Current Value	Percent of Total
26-Aug	buy	LQD	112.36	300	33,718								0.0%
26-Aug	buy	PCY	26.64	1,300	34,642								
26-Aug	buy	AGG	106.09	320	33,959								
28-Aug	sell	PCY	26.32	1,300	34,206								
5-Sep	sell	AGG	104.89	320	33,555								0.0%
5-Sep	sell	LQD	110.91	300	33,263								0.0%
9-Sep	buy	LQD	111.63	300	33,499								
9-Sep	buy	PCY	26.54	1,300	34,512								
28-Oct	sell	PCY	27.95	1,300	36,325								
28-Oct	sell	LQD	115.43	300	34,619								
						Money Market				1.00	115,321	115,321.00	100.0%
												Total Valuation=	115,321.00 100.0%

WEEKLY REVIEW

11/11 No changes.

11/4 No changes. Will wait for signals to reenter.

10/28 Time to take short-term profits in both positions as they look to have 'rolled over'. Will watch for reentry points in the weeks ahead.

10/21 Raised the stop levels again to follow the market as it climbs.

10/14 Please note the raised stop levels.

10/7 No changes.

	2010	2011	2012	ytd 2013	Incptn	SD
ETF Income Portfolio	4.8%	3.6	4.8	1.3	15.3	4.5
Aggregate Bond	2.5%	4.3	0.9	-4.0	3.5	2.5

This shows the returns of previous years, year to date (ytd), and from inception (incptn). It also shows standard deviation (SD).

ETF Income Database and Ranking to 8/30/13

<i>Fund Name</i>	<i>Symbol</i>	<i>Style</i>	<i>12m</i>	<i>9m</i>	<i>6m</i>	<i>3m</i>	<i>1m</i>	<i>V</i>	<i>NAV</i>	<i>Rank</i>
iShares 1-3yr Trsry	SHY	BS	0.03	0.03	-0.07	-0.03	-0.10	0.08	84.28	*****
Vngrd ShrtTrm Bond	BSV	BS	-0.19	-0.45	-0.60	-0.38	-0.27	0.23	79.96	*****
iShares 3-7yr Trsry	IEI	BI	-2.51	-2.67	-2.49	-1.82	-0.77	0.51	119.88	****
iShares Agg Bond	AGG	BI	-2.85	-3.32	-3.05	-2.12	-0.83	0.61	106.01	****
iShares Inter Bond	MBB	BI	-3.09	-2.81	-2.91	-1.77	-0.67	0.43	104.17	****
iShares Inter Gov	GVI	BI	-1.51	-2.04	-1.92	-1.35	-0.64	0.46	109.11	****
Wtree Dryfs Chns Yuan	CYB	BF	4.62	2.26	2.23	0.54	0.42	0.42	26.16	****
Currency Euro	FXE	BF	4.69	1.36	1.04	1.60	-0.68	1.85	130.84	***
iShares 10-20yr Trsry	TLH	BL	-8.69	-8.69	-6.33	-4.80	-0.97	1.55	123.42	**
iShares 7-10yr Trsry	IEF	BI	-6.40	-6.61	-5.56	-4.27	-1.42	1.08	100.26	**
iShares High Yld	HYG	BH	5.38	2.88	0.18	-0.17	-1.27	1.56	90.87	**
iShares Intrntl Tbond	IGOV	BW	-1.59	-3.73	-1.85	-0.50	-0.73	1.54	97.93	**
iShares Long Corp Bond	LQD	BL	-2.90	-4.84	-4.30	-3.17	-1.00	1.39	112.68	**
iShares Trsry Inflt	TIP	BI	-7.29	-8.84	-7.78	-4.71	-1.83	1.18	110.64	**
PS 1-30 Ldr Trsry	PLW	BI	-8.64	-8.31	-5.99	-4.31	-0.96	1.45	29.88	**
PS Bld America	BAB	BI	-5.98	-7.40	-8.54	-7.83	-1.41	1.59	27.14	**
PS DB Dollar Bearish	UDN	BF	-1.27	-2.51	0.04	1.65	-0.49	1.29	26.42	**
PS DB Dollar Bullish	UUP	BF	-0.49	1.23	-0.80	-1.86	0.41	1.28	22.19	**
PS DB G10 Currency	DBV	BF	-0.76	-4.00	-7.09	-6.64	-2.44	1.72	24.75	**
PS Fdmntl Hi Yield Corp	PHB	BH	3.25	1.31	-0.10	-0.99	-0.88	1.23	18.71	**
PS Insr CA Muni	PWZ	BI	-6.48	-9.21	-8.53	-7.65	-2.25	1.29	22.72	**
PS Insr NY Muni	PZT	BI	-9.02	-11.54	-10.28	-8.91	-2.61	1.51	21.68	**
PS Prfd	PGX	BF	-0.95	-2.38	-4.30	-4.81	-1.65	1.18	13.68	**
SPDR High Yield	JNK	BH	5.27	2.46	0.00	-0.75	-1.03	1.56	39.46	**
SPDR Intrntl TBond	BWX	BW	-4.13	-5.75	-2.63	-0.53	-1.15	1.48	56.79	**
Vngrd Intrmdt Bond	BND	BI	-2.94	-3.28	-2.96	-2.12	-0.86	0.62	79.99	**
Wtree Dryfs Comdty Cur	CCX	BF	-6.19	-7.08	-8.09	-3.79	-2.15	1.55	19.55	**
Wtree Dryfs Emrg Crrncy	CEW	BF	-3.44	-5.57	-6.78	-3.77	-2.82	1.44	19.65	**
iShares 20+ yr Trsry	TLT	BL	-14.79	-13.35	-9.34	-6.72	-1.34	2.46	105.71	**
PS Emrg Mrkt Svrgn Debt	PCY	BW	-8.80	-13.37	-11.06	-7.86	-3.36	2.67	26.24	**
PS Insr Natl Muni	PZA	BI	-8.56	-11.75	-10.49	-9.01	-1.56	1.56	22.52	**
Wtree Dryfs Brazil Real	BZF	BF	-10.67	-7.36	-15.28	-9.16	-3.29	2.37	16.75	**
Wtree Emrg Mrkt Lcl Debt	ELD	BF	-7.81	-11.12	-12.85	-8.94	-4.35	2.09	45.45	**
Wtree Dryfs Indn Rupee	ICN	BF	-11.22	-13.71	-15.13	-13.34	-5.23	2.58	18.12	*

This is the ETF Income Database and Ranking. It shows performance over the last 12, 9, 6, 3, and 1 months through the previous month's end. V is Volatility. NAV is price. CS is Comet Strength (not shown). C is Comet (not shown), which is an ETF's risk-adjusted performance; the higher the better. V, CS, and C are proprietary tools. Rank column shows the number of comets.

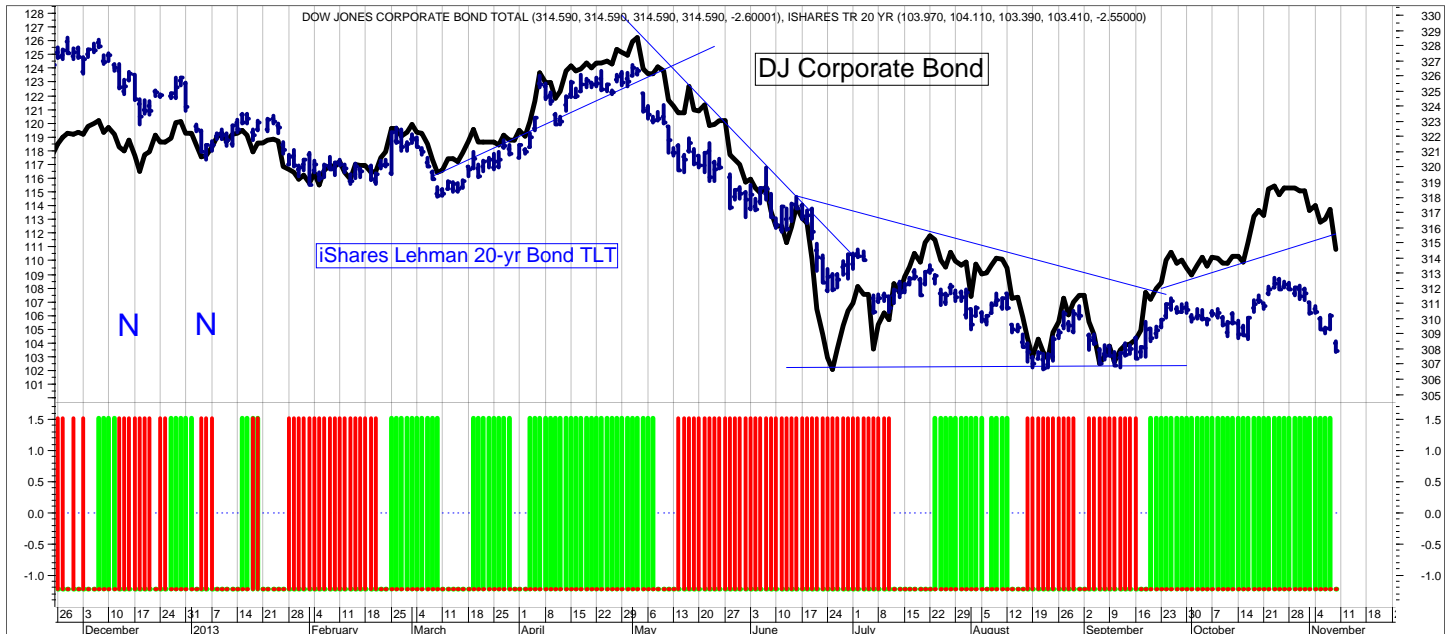
ETF LEGEND for pages 3 (Bond), and 7, 8, 9, and 10 (Equity):

Column headings: The first column shows the ETF name, the second column shows its symbol. The third column shows the ETF Style. The first letter is always either B (Bond) or E (Equity) or H (Hybrid). The next letter(s) is the style. So, BS-bond short, BI-bond intermediate, BL-bond long, BF-flexible, BW-world, BH-high yield. And for Equity, EA-equity aggressive, EC-equity contrary, EG-equity gold (precious metals), ESC-small cap, EMC-mid cap, ELC-large cap, EW-world, EGI-growth/income, ERE-real estate, EV-value.

Columns 4-8 show percentage returns for the periods shown (12 months, 9, 6, 3, and 1 month). Column 9 is V (volatility); a measure of risk; the lower the V, the less risk. Column 10 is the NAV. Column 11 is the C (comet) ranking. C is the risk-adjusted (V) relative performance (CS). The higher the C indicates the most return for the amount of risk taken.

Generally, our ETF strategy is to own the top ranked ETFs (shown in green) and avoid or short the lower ranked ETFs (shown in red).

SLM Bond Timing Model



The SLM Bond Timing Model is based on the expected direction of the Corporate Bond market. The green bars are bullish (expect higher prices and lower yields) and the red bars are bearish (expect lower prices and higher yields). White spaces indicate that the previous signal is still in effect.

WEEKLY REVIEW

11/11 Bonds have sold off sharply the last few weeks on better economic news (leading economic indicators up and employment gains). Talk of Fed tapering has picked up.

11/4 Will watch for reentry points on pullbacks to recent trend line.

10/28 Taking some profits, as the market looks extended and topy, but will look to reenter on pullbacks.

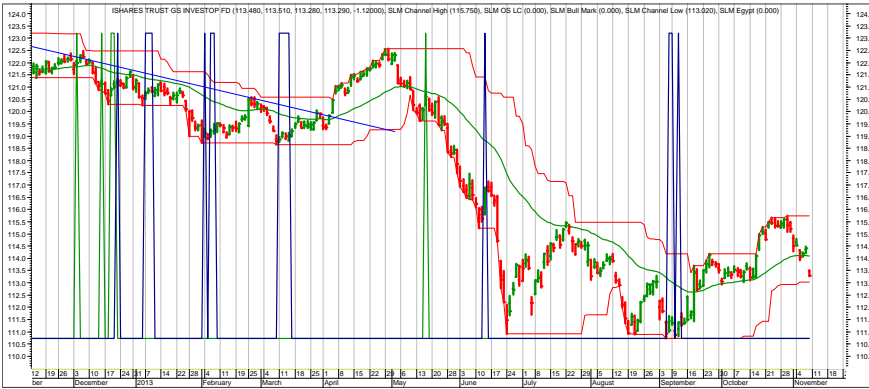
10/21 Rally still on, as market starts to focus on new Chairman Yellen policies to maintain accommodative Fed.

10/14 Intermediate-term trend is still up.

10/7 Consolidating the recent jump, as bonds move sideways. Economy is muddling along and taper talk is off, so may see some further gains.

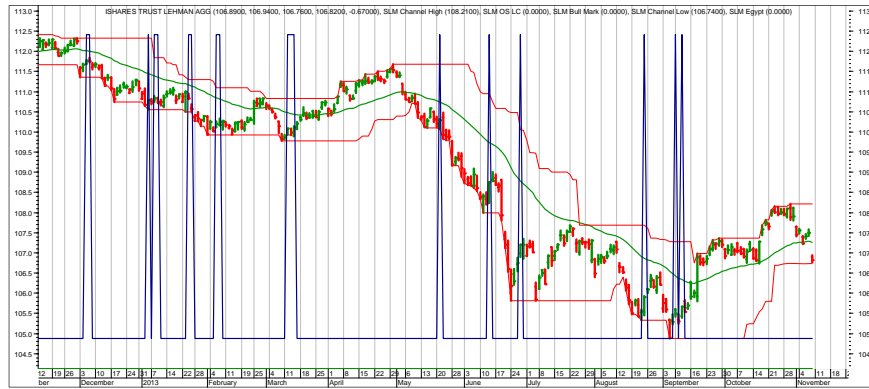
9/30 Bonds popped up through the short-term down trend line. Expect some pullback and consolidation and then we'll see.

Income Charts (DAILY)



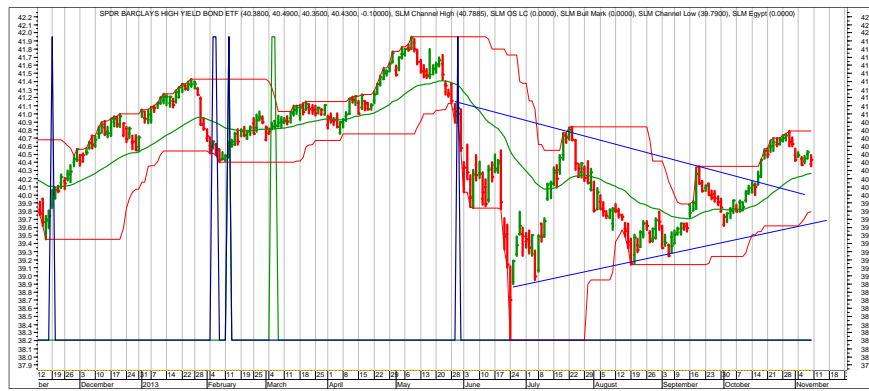
LQD—Investment Grade Corporate

11/11 Watch for entry points.
 11/4 No changes.
 10/28 Short-term pause and pullback expected.
 10/21 No changes.
 10/14 No changes.



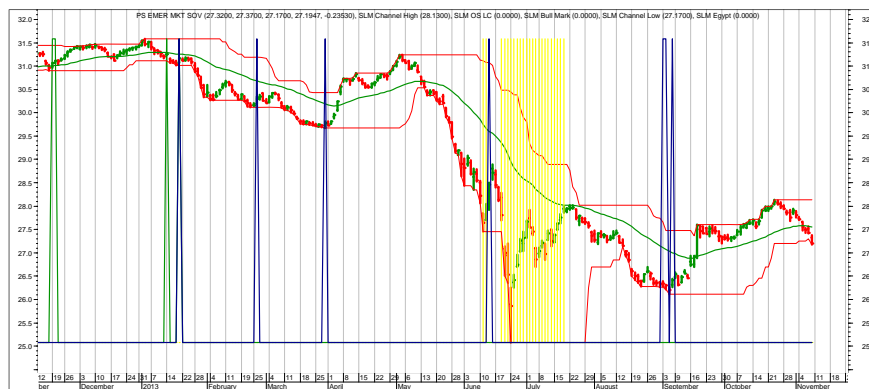
AGG—Aggregate Bond Market

11/11 Watch for entry points.
 11/4 No changes.
 10/28 Short-term top expected.
 10/21 No changes.
 10/14 No changes.



JNK—hi-yield bonds

11/11 Pulling back.
 11/4 Watch for pullback on which to buy.
 10/28 Short-term pause expected.
 10/21 Pop on through its “triangle pattern”. Will watch for pullbacks for potential entry points.
 10/14 No changes.



PCY—International Bonds

11/11 Watch for entry points.
 11/4 No changes.
 10/28 Short-term top expected. Will watch for a pullback to reenter.
 10/21 No changes.
 10/14 Moving higher.

Each chart shows daily (or weekly if noted in page title at top) prices, a moving average (smoothed green line on price portion), and blue or green spikes. The spikes show potential buy signals. The red lines are price channels. The charts do not show sell signals.

Growth Portfolio (changed as of 12/10/12, 9/23/13)

ACTION FOR			PORTFOLIO DETAILS				Value as of date:			11/8/2013			
Action Date	Action	Symbol	Action Price	# of Shares	Action Value	Symbol	Stop Loss	Description	Start Price	Ending Price	# of Shares	Current Value	Percent of Total
14-Oct	sell	EEM	43.08	163	7,012	World Growth							
14-Oct	sell	EFA	64.63	106	6,841	EEM		Emrg Mrkt	43.03	41.14	162.440	6,682.78	4.8%
14-Oct	sell	IWM	108.19	64	6,914	EFA		Euro Asia	55.55	65.12	105.060	6,841.51	4.9%
14-Oct	sell	QQQ	79.82	88	7,014	IWM		Rusi 2000	82.54	109.14	64.740	7,065.72	5.0%
14-Oct	sell	SPY	170.99	41	7,001	QQQ		Nsdq 100	65.12	82.54	88.280	7,286.63	5.2%
14-Oct	sell	PBE	34.48	185	6,369	SPY		S&P 500	142.47	177.13	40.820	7,230.45	5.2%
14-Oct	sell	PGJ	29.52	235	6,927	C-lect 5							
14-Oct	sell	PNQI	61.24	108	6,604	DFE			53.54	53.32	132.000	7,038.24	5.0%
14-Oct	sell	PSCH	49.87	135	6,722	EWP			37.66	36.83	190.000	6,997.70	5.0%
14-Oct	sell	TAN	37.26	213	7,926	PGJ			27.97	27.77	234.000	6,498.18	4.6%
The sells will raise cash from 0% to 50% of total portfolio.						PNQI			60.74	62.13	107.000	6,647.91	4.7%
21-Oct	sell	PBE	34.38	185	6,350	TAN			30.50	40.14	213.000	8,549.82	6.1%
21-Oct	buy	DFE	53.54	132	7,092	Two potential ways to sell: Stop loss is roughly 9% below current level, or timing model may also signal sell.							
This is a lateral trade.						C-lect Short							
4-Nov	sell	PSCH	51.70	134	6,918								
4-Nov	buy	EWP	37.66	190	7,165								
This is a lateral trade.													
						Cash from short			1.00	-	-	-	0.0%
						Money Market			1.00	69,411	69,411.00	49.5%	
									Total Valuation=		140,249.94	100.0%	

WEEKLY REVIEW

11/11 No portfolio changes.

11/4 Time to make a lateral move in which we sell a fund (PSCH) and buy a different fund (EWP) for roughly the same dollar amount (which is the same percentage amount of the total portfolio, currently about 5%).

10/28 No changes to the portfolio.

	2010	2011	2012	ytd 2013	Incptn	SD
ETF Growth Portfolio	8.1%	6.9	-2.1	24.0	40.3	7.9
World Growth Index	17.2%	-4.2	14.3	24.3	59.5	15.1

The ETF Growth Portfolio changed as of 12/10/12. It is following the new World Growth Model (WGM), which uses the same 5 etfs (EEM, EFA, IWM, QQQ, SPY) as the World Growth Index (WGI). The difference between the two is WGM uses timing and WGI is always fully invested and WGI is rebalanced to 20% in each position daily (this accounts for the different returns when WGM is invested and held).

Based on the successful back testing strategy, C-lect 5 was added to the portfolio on 9/23/13.

Returns are of previous years, year to date (ytd), and from inception (incptn). It also shows standard deviation (SD).

ETF Rankings by C to previous week's end

<i>Fund Name</i>	<i>Symbol</i>	<i>Style</i>	<i>C</i>
PS Gldn Drgn USX China	PGJ	EW	17.18
Guggnhm Solar	TAN	EA	16.23
PS NASDAQ Intrnt	PNQI	EA	13.68
Wtree Eur SC Div	DFE	EW	11.88
iShares Spain	EW P	EW	11.38
PS S&P SmICap Hlth Care	PSCH	EA	9.33
iShares Italy Indx	EWI	EW	8.98
Guggnhm Shipping	SEA	EA	8.94
PS Gbl Clean Enrgy	PBD	EW	8.66
iShares Slct Div	IDV	ELC	7.74
iShares EMU Indx	EZU	EW	7.43
PS Dynmc Biotech	PBE	EA	7.21
SPDR Euro Stoxx 50	FEZ	EW	7.20
PS S&P SmICap Info Tech	PSCT	EA	7.06
PS Dynmc Networking	PXQ	EA	6.97
PS S&P SmICap Energy	PSCE	EA	6.62
PS WilderHill Cln Enrgy	PBW	EA	6.60
Wtree Intrntl SC Div	DLS	EW	6.51
PS DWA Dvlpd Mrkt T Ldrs	PIZ	ELC	6.31
Guggnhm China All	YAO	EW R	6.24
iShares South Korea Indx	EWY	EW	6.16
PS Aerospace & Def	PPA	EA	6.03
Wtree DEFA Eqty Incm	DTH	EW	5.79
Wtree Intrntl Div Ex Fincl	DOO	EW	5.56
PS Cleantech	PZD	EA	5.51
SPDR S&P Oil & Gas Expl. & Prod.	XOP	EA	5.45
PS FTSE RAFI Dvlp Mrkt xUSA Sml	PDN	EW	5.22
PS FTSE RAFI Dvlp Mrkt xUSA	PXF	EW	4.85
Guggnhm China Sml	HAO	EW R	4.80
Guggnhm BRIC	EEB	EW	4.73
Wtree DEFA	DWM	EW	4.59
Vngrd European Indx	VGK	EW	4.52
iShares Germany Indx	EWG	EW	4.51
PS Dynmc Leisure & Enter	PEJ	EA	4.46
iShares Europe 350	IEV	EW	4.39
iShares Australia	EW A	EW	4.37
PS S&P SmICap Indstrils	PSCI	EA	4.33
Wtree Intrntl LC Div	DOL	EW	4.23
PS S&P SmICap Cnsmr Stpl	PSCC	EA	4.22
PS FTSE RAFI Asia Pac xJpn	PAF	EW	4.13
iShares China	FXI	EW	4.10
Guggnhm Spin Off	CSD	EMC	3.96
Market Vectors Russia	RSX	EW	3.95
Wtree Intrntl MC Div	DIM	EW	3.92
PS QQQ	QQQ	ELC	3.71
PS Dynmc Pharma	PJP	EA	3.68
PS Gbl Water	PIO	EW	3.59
SPDR S&P Regional Banking	KRE	EA	3.58
PS BLDR Europe 100 ADR	ADRU	EW	3.44
PS Dynmc Software	PSJ	EA	3.31

This page and the next three show the equity ETF database rankings from high to low based on C. C is Comet, which is the risk-adjusted relative performance; the higher the C ranking, the better. Comet, not stars, because comets come into and out of prominence over time.

The first column shows the name. The second column shows the symbol. The third column shows the style; it begins with E for Equity and then the style (A is aggressive, W is world, WR is world regional, SC is small cap, MC is mid cap, LC is large cap, GI is growth/income, V is value). The fourth column shows the C level.

ETF Rankings by C to previous week's end

PS Dynmc Media	PBS	EA	3.28
iShares Pacific ex Jpn	EPP	EW	3.16
Guggnhm Timber	CUT	EA	3.09
PS Gbl Listd Prvt Eqty	PSP	EW	3.01
PS Buyback Achievers	PKW	EGI	2.95
Market Vectors Oil Services	OIH	EA	2.92
PS Dynmc Consmr Discr	PEZ	EA	2.89
PS Dynmc Retail	PMR	EA	2.87
SPDR S&P Bank	KBE	EA	2.85
Vngrd Europe Pacific	VEA	EW	2.82
PS BLDR Dvlpd Mrkt 100 ADR	ADRD	EW	2.72
Vngrd Small Cap Grth	VBK	ESC	2.44
iShares EAFE Indx	EFA	EW	2.44
Select SPDR MatrIs	XLB	EA	2.35
Guggnhm RJ All	RYJ	ELC	2.32
Wtree MidCap Earn	EZM	EMC	2.23
Select SPDR Indl	XLI	EA	2.18
SPDR DJ Gbl Titans	DGT	EW	2.13
Wtree Gbl Eqty Incm	DEW	EW	2.13
SPDR S&P Metals & Mining	XME	EA	2.09
PS S&P SmICap MtrIs	PSCM	EA	2.07
PS FTSE RAFI US 1500 SmI-Mid	PRFZ	EMC	2.05
Vngrd TTL Intrntl Stk	VXUS	EW	1.98
PS Dynmc Technology	PTF	EA	1.86
Vngrd Materials	VAW	EA	1.82
iShares Russell 2000	IWM	ESC	1.76
Wtree SmI Cap Div	DES	ESC	1.71
Guggnhm Intrntl A Incm	HGI	EW	1.64
Vngrd Extnd 4500	VXF	ELC	1.61
Wtree Intrntl Utilities	DBU	EW	1.55
PS Dynmc Lrg Cap Grth	PWB	ELC	1.54
PS Dynmc Oil & Gas Srvcs	PXJ	EA	1.51
PS Dynmc Fncl	PFI	EA	1.45
Vngrd Tech	VGT	EA	1.44
PS BLDR Emrg Mkt 50 ADR	ADRE	EW	1.42
iShares Hong Kong Indx	EW H	EW	1.42
Vngrd Health	VHT	EA	1.40
Wtree Emrg Mrkt Eincm	DEM	EW	1.37
PS Dynmc Healthcare	PTH	EA	1.36
PS Dyn Mrkt	PWC	ELC	1.35
PS Dyn MagniQuant	PIQ	ELC	1.34
Vngrd Consmr Dis	VCR	EA	1.32
PS FTSE RAFI Emrg Mrkt	PXH	EW	1.26
PS BLDR Asia 50 ADR	ADRA	EW	1.26
PS Dynmc Semicndctr	PSI	EA	1.10
Select SPDR Cnsmr Disc	XLY	EA	1.09
PS Dynmc Energy Explor	PXE	EA	1.00
PS Dynmc Basic MatrI	PYZ	EA	0.98
Vngrd Small Cap	VB	ESC	0.96
Select SPDR Health	XLV	EA	0.94
PS S&P SmICap Cnsmr Dis	PSCD	EA	0.93
PS Zacks Micro Cap	PZI	ESC	0.86
Guggnhm Gbl Div	LVL	EW	0.85
PS Dynmc Energy	PXI	EA	0.79
iShares Emrg Mrkt Stk	EEM	EW	0.75

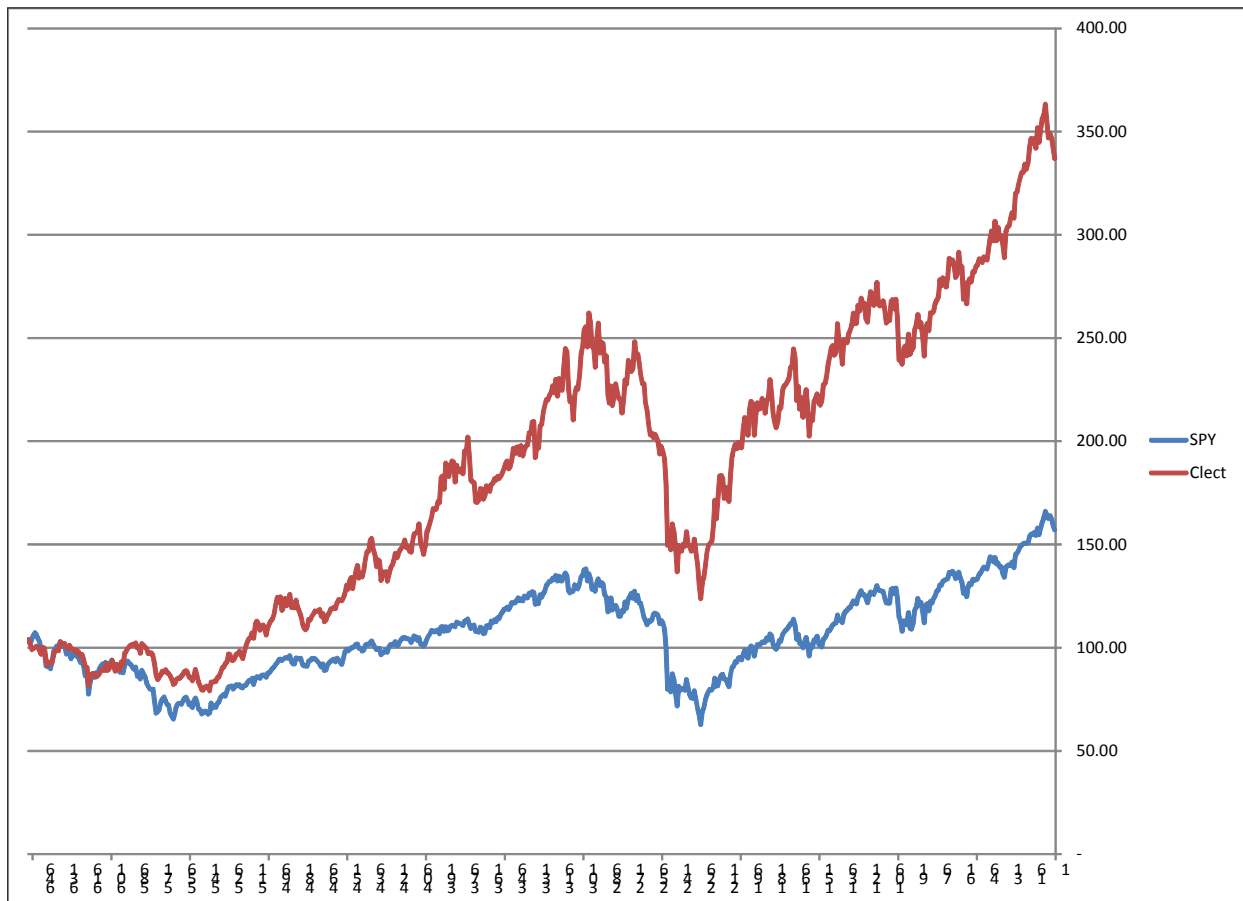
ETF Rankings by C to previous week's end

PS Dyn OTC	PW O	ESC	0.67
Guggnhm Gbl Wtr	CGW	EW	0.66
Vngrd Grth	VUG	ELC	0.56
PS Dynmc Food & Bev	PBJ	EA	0.54
Vngrd Small Cap Value	VBR	ESC	0.53
iShares Russell 1000 Grwth Indx	IWF	ELC	0.49
iShares Russell 2000 Value Indx	IWN	ESC	0.45
PS Water Resources	PHO	EA	0.37
iShares Taiwan Indx	EWT	EW	0.36
Guggnhm MidCap Core	CZA	EMC	0.31
Wtree MidCap Div	DON	EMC	0.31
iShares Canada	EW C	EW	0.28
SPDR S&P Retail	XRT	EA	0.21
PS DB Oil	DBO	EA	0.21
Vngrd MidCap Val	VO	EMC	0.16
PS Hi Yld Eqty Div	PEY	EGI	0.15
iShares Brazil Indx	EW Z	EW	0.15
iShares DJ Slct Div	DVY	EGI	0.05
iShares Core S&P Mid Cap	IJH	EMC	(0.00)
Guggnhm Inldr Sent	NFO	EMC	(0.01)
SPDR Mid Cap Trust	MDY	EMC	(0.09)
Select SPDR Technlgy	XLK	EA	(0.09)
Vngrd TTL Stock	VTI	ELC	(0.09)
Market Vectors Semiconductor	SMH	EA	(0.13)
PS WilderHill Prgsv Enrgy	PUW	EA	(0.13)
Select SPDR Enrgy	XLE	EA	(0.15)
PS DWA Tech Ldr	PDP	ELC	(0.15)
iShares Russel MidVal	IWS	EMC	(0.17)
Vngrd Large Cap	VV	ELC	(0.22)
US Oil Fund	USO	EA	(0.25)
PS Dynmc Consmr Staples	PSL	EA	(0.28)
iShares Core S&P 500	IVV	ELC	(0.29)
SPDR S&P 500	SPY	ELC	(0.30)
Wtree Ttl Earn	EXT	ELC	(0.31)
Vngrd Div Apprctn	VIG	EGI	(0.34)
PS S&P SmICap Fincl	PSCF	EA	(0.40)
Vngrd Emrg Mrkt	VWO	EW	(0.41)
PS DB Commodity	DBC	EA	(0.41)
iShares S&P 100 Indx	OEF	ELC	(0.43)
Wtree S&P 500	EPS	ELC	(0.44)
iShares Russell 1000 Value Indx	IWD	ELC	(0.48)
Guggnhm Frntr	FRN	EW	(0.58)
Wtree Japan SC Div	DFJ	EW R	(0.60)
PS Intrntl Dvdnd	PID	EW	(0.61)
Guggnhm Candn Enrg Incm	ENY	EW R	(0.61)
Wtree LrgCap Div	DLN	ELC	(0.64)
Select SPDR Div	SDY	EGI	(0.65)
Wtree Div Ex Fincl	DTN	ELC	(0.70)
PS S&P 500 BuyWrite	PBP	ELC	(0.75)
Guggnhm Multi Ast In	CVY	EV	(0.83)
PS DB Energy	DBE	EA	(0.86)
PS Dynmc Lrg Cap Value	PWV	ELC	(0.90)
Select SPDR FinancIs	XLF	EA	(0.92)
PS Dividend Achievers	PFM	EGI	(0.93)
Guggnhm China REIT	TAO	EW R	(0.97)

ETF Rankings by C to previous week's end

Wtree Middle East Div	GULF	EW	(0.98)
Wtree Eqty Income	DHS	EGI	(1.00)
Vngrd Fincl Srv	VFH	EA	(1.02)
iShares Silver	SLV	EG	(1.03)
PS MENA Frntr Countries	PMNA	EW	(1.04)
Vngrd Consmr Stpls	VDC	EA	(1.09)
iShares Latin Amr	ILF	EW	(1.09)
PS Emrg Mrkt Infrastrctr	PXR	EW	(1.15)
Guggnhm Dfnsv Eqty	DEF	EV	(1.16)
Select SPDR Cnsmr Stpl	XLP	EA	(1.17)
PS Dynmc Utilities	PUI	EA	(1.20)
Wtree World Ex US Grth	DNL	EW	(1.20)
SPDR DJ Industrials	DIA	ELC	(1.22)
Alerian MLP	AMLP	EGI	(1.25)
PS DB Agriculture	DBA	EA	(1.30)
PS DB Base Metals	DBB	EG	(1.34)
PS DB Silver	DBS	EG	(1.35)
PS S&P 500 Low Volatility Portfolio	SPLV	ELC	(1.37)
PS Dynmc Bldg Cnstrctn	PKB	EA	(1.38)
iShares Prfrd	PFF	EGI	(1.70)
Wtree Emrg Mrkt SC Div	DGS	EW	(1.73)
PS Fincl Pfd	PGF	EGI	(1.76)
iShares Singapore	EWS	EW	(1.86)
PS S&P SmICap Utilities	PSCU	EA	(1.94)
Wtree Intrntl REIT	DRW	ERE	(1.96)
iShares Japan	EWJ	EW	(2.04)
Select SPDR Utilities	XLU	EA	(2.07)
PS DB Precious Metals	DBP	EG	(2.07)
iShares Malaysia Indx	EW M	EW	(2.07)
Vngrd Utilities	VPU	EA	(2.09)
PS Lux Nanotech	PXN	EA	(2.12)
SPDR Gold	GLD	EG	(2.30)
iShares Gold	IAU	EG	(2.31)
PS DB Gold	DGL	EG	(2.60)
Pro Shares Short S&P 500	SH	EC	(2.98)
PS Gbl Agriculture	PAGG	EA	(3.07)
SPDR S&P Homebuilders	XHB	EA	(3.98)
PS DWA Emrg Mrkt T Ldrs	PIE	EW	(3.99)
Wtree Japan Hedge Eqty	DXJ	EC	(4.12)
iShares Mexico	EW W	EW	(4.40)
Vngrd REIT	VNQ	ERE	(4.88)
Pro Shares Short Russell 2000	RWM	ESC	(4.90)
SPDR Wlsh REIT	RWR	ERE	(5.01)
iShares REIT	IYR	ERE	(5.03)
PS India	PIN	EW	(5.07)
iShares Cohen&Str REIT	ICF	ERE	(5.30)
PS US REIT	PSR	ERE	(5.41)
Wtree India	EPI	EW R	(5.69)
PS Gbl Gold Precious Mtls	PSAU	EG	(7.09)
iShares DJ US Home Constr.	ITB	EA	(8.18)
US Natural Gas	UNG	EA	(11.12)
Market Vectors Gold Minors	GDX	EG	(13.04)
Market Vectors Junior Gold Miners	GDXJ	EG	(21.25)
iPath S&P 500 VIX Shrt Trm	VXX	EC	(31.55)

C-lect 5 (reiteration)



The new selecting and timing model is completed under the name of C-lect 5.

The chart above shows only the C-lect 5 without any market timing. The point with this is to show that staying with the leading ETFs is a winning strategy over time, even without employing market timing.

With market timing, the huge bear market downdrafts should be avoided.

Overflow from Page 1, Definitions, and Newsletter Updates

(Continued from page 1) *REVIEW*
in their rally.

Since then, however, the latest unemployment numbers came out fairly strongly. In addition, the leading economic indicators came out stronger in their latest reporting period. Plus the government shutdown did not seem to harm the economy.

What this means, if past patterns continue to hold, is the taper talk should pick up even further, which will knock bonds lower in price. We have already seen this.

But this talk should also translate into a weaker stock market, which we have yet to see.

The stronger economic news is helping investor sentiment turn

more bullish, which in turn is bearish from a contrary point of view.

So at least the background information of tapering and sentiment to form a short-term stock market top appears to be in place.

Please see the individual portfolio pages for any updates and changes.

Just to clarify a couple of terms that I use regularly.

Short-term is days to weeks.

Intermediate-term is weeks to months.

Long-term is months to years.

Cyclical is 1-5 years.

Secular is 5 years to decades.

Bull market is a series of higher highs and higher lows.

Bear market is a series of lower lows and lower highs.

Neutral market is sideways without a discernible pattern.

Oddly, bull and bear markets may occur simultaneously, but only over different time periods. For example, we may be in a secular bear market, but there are cyclical bull and bear markets within that.

Closing stops are “mental”. I look at the position at quarter to the close. If it is trading below the stop (or above if short), then I act with the assumption the security will trigger that closing stop on that day. I sell (or cover) at the close that day.

Portfolio stops for the World Growth Model are internally maintained; they are based on the Wrlld Grth Index, not the individual ETFs. They will be emailed when close or if triggered.

11/11 No changes.

11/4 No changes.

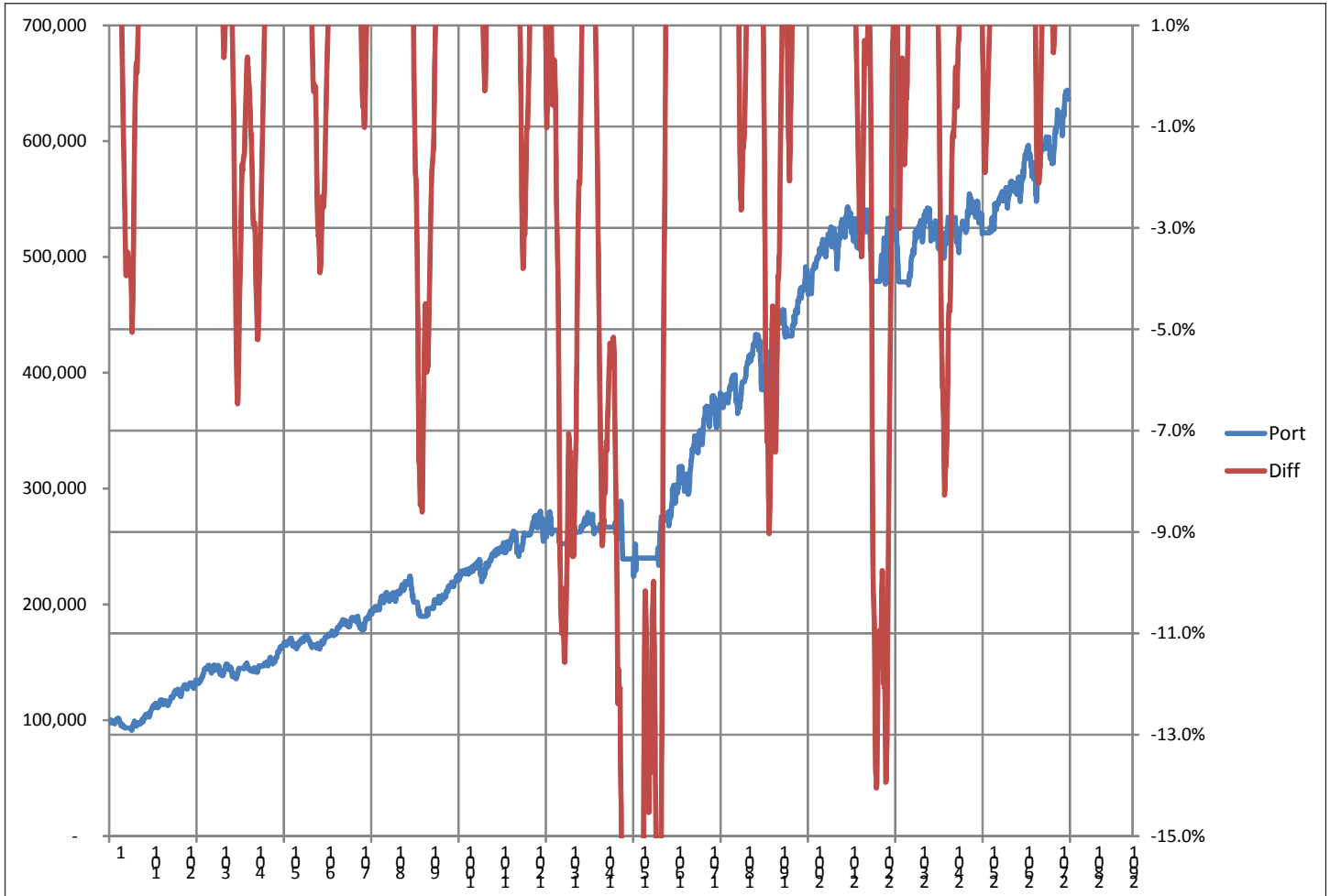
10/28 No changes.

10/21 Work continues on the “shorting/inverse” portfolio and will begin on the new World Income Index (WII).

10/15 Again to clarify, the equity ETF rankings shown on pages 7-10 are now based on weekly C data. The bond ETF rankings are still based on monthly C data.

Plans are underway to investigate a new bond model based on a similar approach as the World Growth Index.

Buy Window for WGM Open or Closed (closed currently)



The chart above shows the World Growth Model (Port, blue line) and “Diff” (red line; the windows for potential buying opportunities after an initial timing model buy). The “x” axis shows data points, rather than dates, but it is from 9/3/2002 through the present. The potential window to buy is when the red line drops below 1%.

“Diff” is measuring the difference between where the World Growth Model is priced and where the potential sell stop price is. The idea is not to chase the market higher, but wait for lower risk entry points when the market pulls back.

This window is also important because it shows subsequent potential entry points after an initial buy.

Currently the window is closed, suggesting that the market is overextended. This is not to say, however, that the market is at a top. “Diff” does not measure this. It only measures the opportunities of buying on pullbacks at lower risk entry points.

Descriptions & Disclosures

PORTFOLIO DESCRIPTIONS (pages 2 and 6)

Our guiding goal is to provide the most return with the least risk consistently over time through bull and bear markets.

Income Portfolio, page 2: Uses a proprietary selection methodology on all of the monitored bond-oriented ETFs to pick the top ETFs. I then use a proprietary timing model to decide whether to buy, sell, hold, or avoid. From time to time, timing considerations may take precedence over selections; in other words, we may own lower ranked funds because of anticipated timing changes.

Growth Portfolio, page 6: As of 12/10/12, it is based on the World Growth Index (WGI), which is made up of a static fully invested 20% in each of five ETFs (EEM, EFA, IWM, QQQ, SPY). The Portfolio will buy and sell the WGI based on proprietary timing signals. On 9/23/13, the new C-lect 5 is also part of this portfolio. It too uses timing.

Both portfolios were started on 1/1/10 with \$100,000. As mentioned, the Growth Portfolio strategy was changed on 12/10/12 to the World Growth Model and again on 9/23/13 to incorporate the C-lect 5 model.

Portfolio changes will usually be made at the close on Monday, unless otherwise noted in any emailed hotline update or triggered stop orders. Issues are normally posted on Mondays by 1:35pm cst (Tuesday if Monday is a holiday, defined as market closed).

Portfolios are updated through the Friday close the week before.

Dividends are reinvested in additional shares.

Commissions of \$10 per trade are applied. Interest is currently zero for the money market (cash) position.

SUBSCRIPTIONS: To receive *ETF Selections & Timing*, you may subscribe in one of three ways. You may subscribe on the web site InvestmentST.com using PayPal or call 1-800-800-6563 for Amex, Visa, MasterCard, or Discover orders or send a check to the address on the front page. Subscriptions may be tax deductible.

The recurring monthly subscription is \$24.00. An annual subscription is \$240.00. Subscribers receive this weekly eNewsletter. There is no mailed issue. Subscribers retrieve the current weekly issue at the web site InvestmentST.com by logging in with a user name and password. There may also be emailed Hotline reports sent between issues.

Unless otherwise noted, the weekly eNewsletter is posted by 1:35 PM central time each Monday, except for holidays and then on Tuesday. It may contain actionable, specific buy or sell advice to take that day at the Monday (or Tuesday) close in each portfolio. We may also use stop orders. For stops, check the ETF at quarter to the close. If it is below (or above) a stop level, assume it will close there and act on that. Portfolio data will be updated through the previous Friday's close. Fund symbols, rather than names, are the official identification used for activity.

GUARANTEE: Subscriptions may be cancelled at any time. Annual subscriptions are refundable for the weekly term remaining with a four-week minimum charge, using a 52-week count. Monthly subscriptions just expire.

PUBLISHER: Watercourse Way Holdings, LLC publishes this newsletter.

REPRINTS: This eNewsletter is intended for subscribers only, reprints are not permitted.

DISCLAIMER: The information contained herein is assembled from sources who are believed reliable, but the accuracy of data or advice cannot be guaranteed. Past performance does not guarantee future performance. Portfolio values include a commission of \$10/trade, dividend reinvestment, and short-term redemption charges. The World Growth Index and World Income Index are equity and bond indexes and may or may not be useful in comparing returns. Security values fluctuate. Information is provided without consideration for a subscriber's personal situation. Watercourse Way Holdings, LLC its members and associates may or may not invest identically to or at the same time as portfolios or advice shown herein.

COPYRIGHT: Copyright, 2009-13, Watercourse Way Holdings, LLC. All rights reserved.