

ETF Selections & Timing

Watercourse Way Holdings, LLC

P.O. Box 830396
Richardson, TX 75083-0396
972-680-2366

InvestmentST.com

August 26, 2013 (data date through previous Friday close)

Volume 4
Issue 34

Broader Market

For a little bit different perspective on the breadth of the market, instead of showing the chart of the Dow Jones Industrial and Transportation Indexes below, I am showing the Dow Industrials (blue line) and NYSE Advance Decline line (red line).

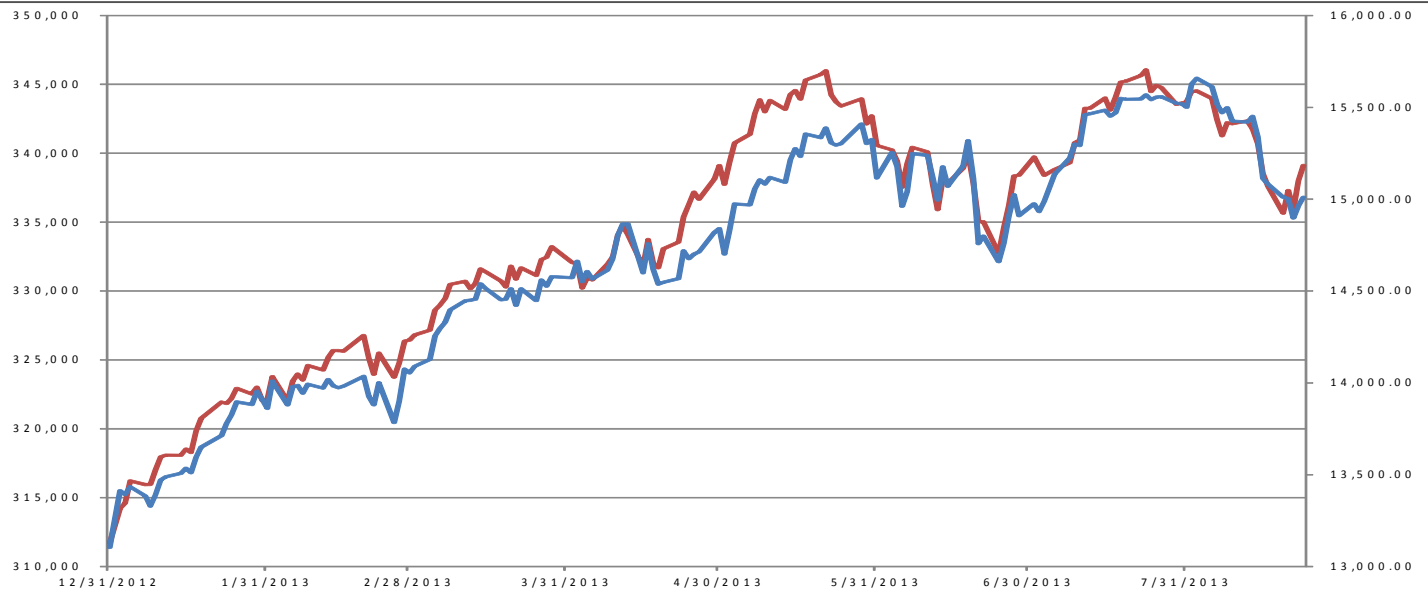
As you can see, unlike the Industrials and Transports that simultaneously made new highs a few weeks ago, the Advance Decline line peaked prior to the new highs in the Dow Industrials. This is a negative divergence that bears watching.

Confirmation of a trend

change, however, won't take place until both drop below their lows set prior to the divergence in June. The Dow Industrials hit lows around 14,550.

In addition to this, I've updated the percentage of ETFs

(Continued on bottom right on page 12 see REVIEW on top)



This is the daily chart of the Dow Industrials (blue line) and NYSE Advance/Decline Lind (red line)

SCOREBOARD (returns year to date and past weeks to date)

Model	YTD	52-week	26-week	13-week	4-week	1-week
ETF Income Portfolio	-0.1%	1.6%	0.2	0.0	0.0	0.0%
ETF Growth Portfolio	14.6%	14.2%	7.7	1.7	-0.4	0.5%
Index						
Aggrgt Bond (AGG)	-4.8%	-5.3%	-4.0	-3.6	-1.2	0.1%
S&P 500 TR (SPY)	19.2%	19.5%	9.9	0.5	-1.7	0.2%
World Growth Index	16.9%	19.2%	9.6	2.2	-0.5	0.6%

CONTENTS

Pages 2-5	Income
Page 4	Bond Model
Pages 6-11	Growth
Page 12-13	Overflow
Page 14	Disclaimers

ETF Income Database and Ranking to 7/31/13

Fund Name	Symbol	Style	12m	9m	6m	3m	1m	V	NAV	Rank
iShares 1-3yr Trsry	SHY	BS	0.13	0.18	0.09	-0.07	0.16	0.07	84.40	*****
Vngrd ShrtTrm Bond	BSV	BS	0.31	0.02	-0.11	-0.64	0.42	0.22	80.33	*****
iShares 3-7yr Trsry	IEI	BI	-1.63	-1.40	-1.14	-2.38	0.25	0.51	120.98	****
iShares Inter Bond	MBB	BI	-2.31	-2.43	-1.96	-2.85	-0.12	0.40	105.04	****
iShares Inter Gov	GVI	BI	-0.67	-1.16	-0.89	-1.96	0.42	0.45	110.13	****
Vngrd Intrmdt Bond	BND	BI	-1.94	-2.18	-1.59	-3.18	0.38	0.63	81.02	****
Wtree Dryfs Chns Yuan	CYB	BF	4.30	2.55	1.64	0.46	0.35	0.46	26.05	****
Currency Euro	FXE	BF	7.72	2.36	-2.21	0.93	2.18	2.24	131.74	***
iShares 7-10yr Trsry	IEF	BI	-5.16	-4.34	-3.11	-5.91	-0.35	1.18	102.00	***
iShares Agg Bond	AGG	BI	-2.04	-2.25	-1.66	-3.28	0.27	0.63	107.30	***
iShares High Yld	HYG	BH	8.06	5.30	2.41	-1.49	2.85	1.69	92.98	***
iShares Intrntl Tbond	IGOV	BW	1.34	-3.88	-3.77	-2.91	2.53	1.72	98.85	***
iShares Long Corp Bond	LQD	BL	-1.98	-4.28	-2.29	-5.35	1.11	1.37	114.54	***
iShares Trsry Inflt	TIP	BI	-5.80	-6.63	-5.89	-7.00	0.90	1.18	112.87	***
PS 1-30 Ldr Trsry	PLW	BI	-8.28	-6.34	-4.28	-7.52	-0.89	1.72	30.29	***
PS Bld America	BAB	BI	-4.79	-4.57	-5.32	-9.06	-1.04	1.66	27.77	***
PS DB Dollar Bearish	UDN	BF	1.03	-2.25	-3.17	0.00	2.08	1.61	26.55	***
PS DB Dollar Bullish	UUP	BF	-2.69	0.96	2.22	-0.45	-2.04	1.62	22.10	***
PS DB G10 Currency	DBV	BF	1.60	-0.24	-4.70	-7.51	-0.16	1.90	25.37	***
PS Fdmntl Hi Yield Corp	PHB	BH	5.78	2.76	1.13	-1.83	2.44	1.27	19.02	***
PS Insrdr CA Muni	PWZ	BI	-4.25	-5.07	-6.01	-7.07	-1.45	1.21	23.40	***
PS Insrdr Natl Muni	PZA	BI	-6.95	-8.03	-8.83	-9.56	-3.29	1.56	23.04	***
PS Insrdr NY Muni	PZT	BI	-6.63	-7.28	-7.63	-8.00	-2.65	1.42	22.41	***
PS Prfd	PGX	BF	1.73	-0.59	-1.84	-4.60	-0.87	1.10	14.07	***
SPDR High Yield	JNK	BH	7.67	4.66	1.76	-2.04	2.53	1.73	40.28	***
SPDR Intrntl TBond	BWX	BW	-1.82	-4.50	-3.90	-3.74	2.39	1.60	57.55	***
Wtree Dryfs Comdty Cur	CCX	BF	-3.80	-5.49	-7.67	-6.90	0.65	1.85	19.98	***
Wtree Dryfs Emrg Crncy	CEW	BF	-0.30	-1.70	-4.49	-5.16	0.85	1.68	20.22	***
iShares 10-20yr Trsry	TLH	BL	-8.28	-6.57	-4.30	-8.05	-0.93	1.81	125.13	**
iShares 20+ yr Trsry	TLT	BL	-14.78	-10.96	-6.97	-11.85	-2.26	2.97	107.70	**
PS Emrg Mrkt Svrgn Debt	PCY	BW	-4.53	-9.12	-8.04	-10.79	0.57	2.60	27.36	**
Wtree Dryfs Brazil Real	BZF	BF	-6.33	-8.55	-11.59	-11.41	-1.87	2.46	17.32	**
Wtree Dryfs Indn Rupee	ICN	BF	-4.97	-9.77	-12.05	-12.77	-3.77	2.65	19.12	**
Wtree Emrg Mrkt Lcl Debt	ELD	BF	-3.39	-6.21	-8.96	-10.63	-0.82	2.22	47.57	**

This is the ETF Income Database and Ranking. It shows performance over the last 12, 9, 6, 3, and 1 months through the previous month's end. V is Volatility. NAV is price. CS is Comet Strength (not shown). C is Comet (not shown), which is an ETF's risk-adjusted performance; the higher the better. V, CS, and C are proprietary tools. Rank column shows the number of comets.

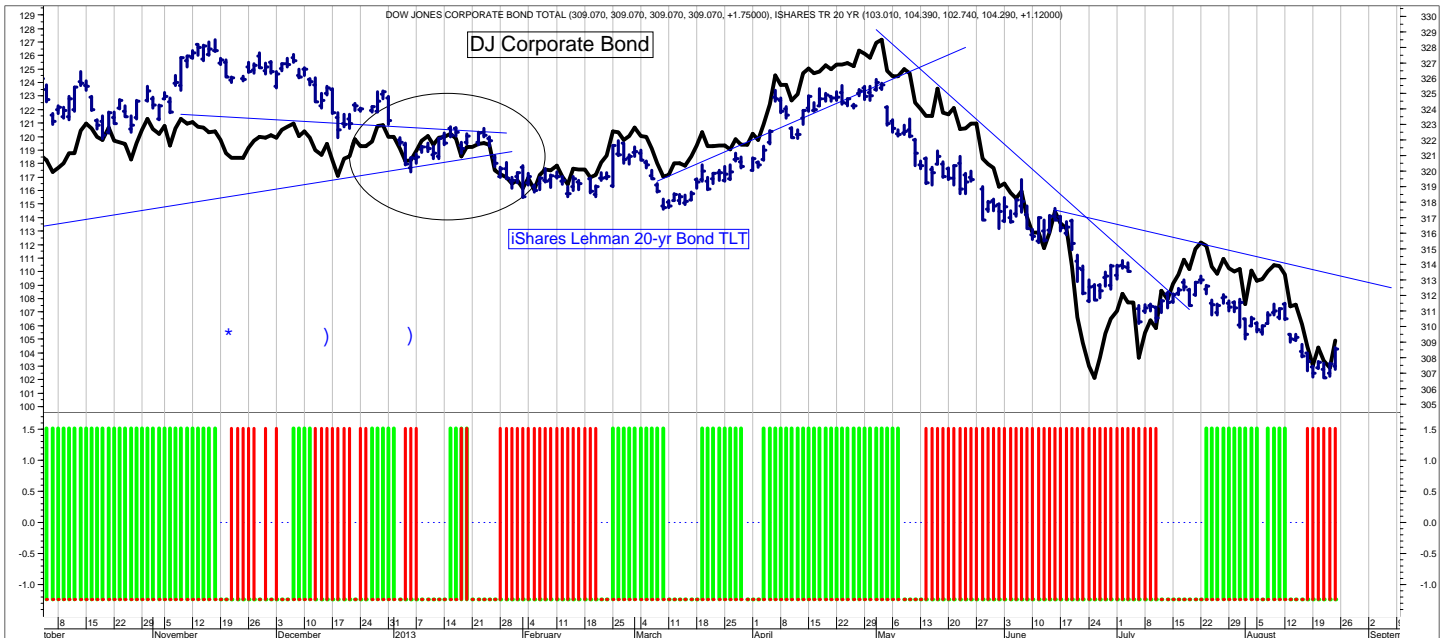
ETF LEGEND for pages 3 (Bond), and 7, 8, 9, and 10 (Equity):

Column headings: The first column shows the ETF name, the second column shows its symbol. The third column shows the ETF Style. The first letter is always either B (Bond) or E (Equity) or H (Hybrid). The next letter(s) is the style. So, BS-bond short, BI-bond intermediate, BL-bond long, BF-flexible, BW-world, BH-high yield. And for Equity, EA-equity aggressive, EC-equity contrary, EG-equity gold (precious metals), ESC-small cap, EMC-mid cap, ELC-large cap, EW-world, EGI-growth/income, ERE-real estate, EV-value.

Columns 4-8 show percentage returns for the periods shown (12 months, 9, 6, 3, and 1 month). Column 9 is V (volatility); a measure of risk; the lower the V, the less risk. Column 10 is the NAV. Column 11 is the C (comet) ranking. C is the risk-adjusted (V) relative performance (CS). The higher the C indicates the most return for the amount of risk taken.

Generally, our ETF strategy is to own the top ranked ETFs (shown in green) and avoid or short the lower ranked ETFs (shown in red).

SLM Bond Timing Model



The SLM Bond Timing Model is based on the expected direction of the Corporate Bond market. The green bars are bullish (expect higher prices and lower yields) and the red bars are bearish (expect lower prices and higher yields). White spaces indicate that the previous signal is still in effect.

WEEKLY REVIEW

8/26 I'm expecting that counter-trend rally to start and have some purchases shown on page 2.

8/19 —

8/12 Still bumping along a possible bottom. Watching for a decent entry point.

8/5 Watching for an entry point.

7/29 Trend reversal is noted on the Barometer. I will watch for a pullback to pick another entry point.

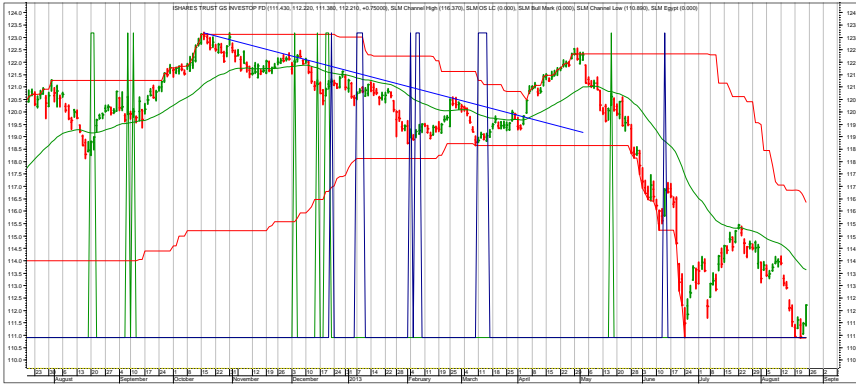
7/22 The down trends (latest blue lines) have been broken as noted on the chart above. I have a close stop on AGG. It would be normal for the market to pullback, but if it continues higher, we want to participate.

7/15 While the Bond Barometer remains bearish because it is trend following, I have bought AGG in anticipation of a bounce as mentioned last week.

7/8 Oversold with a decent (low risk, high reward potential) trade. See page 2 and 5.

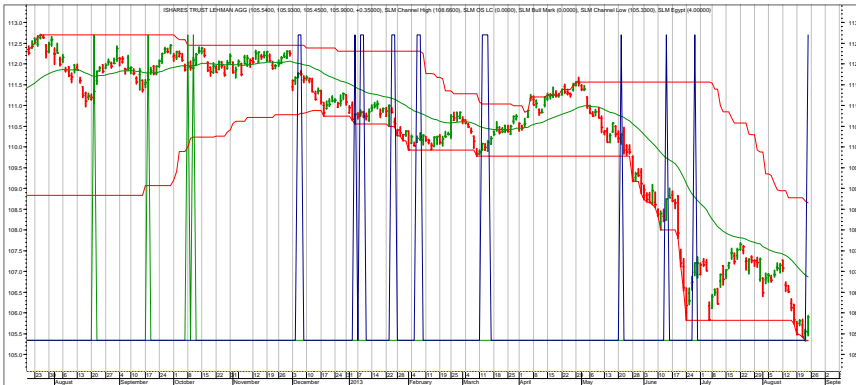
7/1 Still oversold. Will watch for testing and backfilling to form a tradeable bottom.

Income Charts (DAILY)



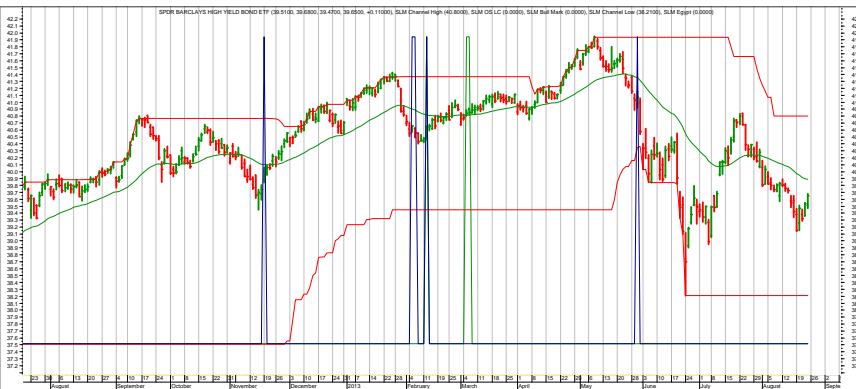
LQD—Investment Grade Corporate

8/26 Support evident. Will buy.
 8/19 Watch for support at previous low, but see AGG comments.
 8/12 No changes.
 8/5 No changes.
 7/29 Watch for a pullback.
 7/22 Expect a pullback to the broken down trend line (latest blue line).



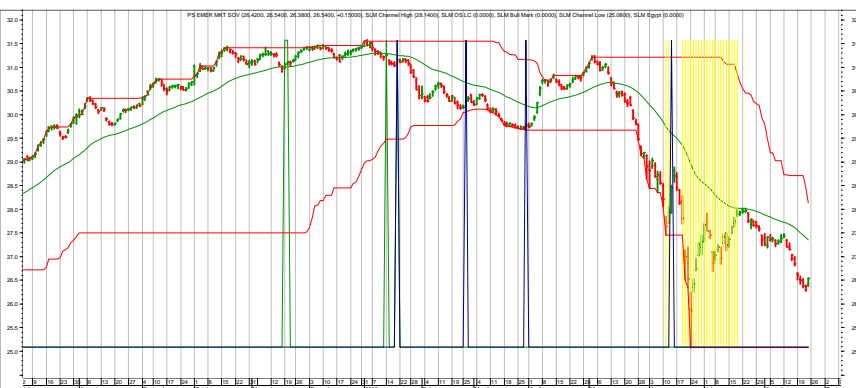
AGG—Aggregate Bond Market

8/26 Last week's scenario is playing out. Will buy with a close stop.
 8/19 AGG is falling below a key support level; probably there are a lot of stops getting taken out. We are already long gone and watching the action from the sidelines. There are times when this type of trade makes a good entry point with its upside potential outweighing its near stop. We will email you, if it sets up, between issues.



JNK—hi-yield bonds

8/26 Not seeing a reason to buy JNK (hi-yield bonds, aside from the fact they have sold off, which really isn't a good reason to buy).
 8/19 No changes.
 8/12 No changes.
 8/5 No changes.



PCY—International Bonds

8/26 Pullback appears completed. Will reenter.
 8/19 Will watch for possible reentry points in the weeks ahead.
 8/12 No changes. Watch for trend break (blue line).
 8/5 No changes.
 7/29 Need more pullback.

Each chart shows daily (or weekly if noted in page title at top) prices, a moving average (smoothed green line on price portion), and spikes. The spikes show potential buy signals. The charts do not show sell signals.

Top ETF Growth Ranking to 7/31/13 (month end)

Fund Name	Symbol	Style	12m	9m	6m	3m	1m	V	NAV	Rank
Guggnhm Solar	TAN	EA	103.89	112.65	59.15	39.94	20.08	12.37	28.52	*****
Guggnhm Spin Off	CSD	EMC	47.15	39.10	24.01	11.18	5.04	3.52	38.79	*****
PS Aerospace & Def	PPA	EA	43.42	34.73	26.60	15.86	8.04	3.20	26.75	*****
PS Dynmc Biotech	PBE	EA	42.88	46.79	31.81	15.51	13.15	5.24	32.69	*****
PS Dynmc Consmr Discr	PEZ	EA	38.03	32.41	23.18	13.30	7.04	3.01	38.48	*****
PS Dynmc Media	PBS	EA	49.14	37.39	28.13	10.90	6.15	3.80	22.26	*****
PS Dynmc Pharma	PJP	EA	40.27	39.86	25.77	14.62	10.10	3.64	46.53	*****
PS Dynmc Retail	PMR	EA	37.92	33.17	26.44	13.92	8.77	2.96	33.00	*****
PS NASDAQ Intrnt	PNQI	EA	40.13	37.61	21.15	17.91	11.19	3.91	54.37	*****
PS WilderHill Cln Enrgy	PBW	EA	50.94	52.30	34.82	24.97	9.83	6.45	5.92	*****
SPDR S&P Bank	KBE	EA	46.91	34.33	23.61	18.84	8.77	3.80	31.24	*****
Guggnhm RJ All	RYJ	ELC	35.47	31.78	18.88	12.18	5.55	2.80	29.85	****
iShares Russell 2000	IWM	ESC	34.93	29.01	16.55	10.64	7.34	3.37	103.66	****
PS Buyback Achievers	PKW	EGI	35.17	29.69	21.35	10.18	7.09	2.88	38.06	****
PS Dyn MagniQuant	PIQ	ELC	37.17	32.23	18.19	9.63	6.77	3.31	34.39	****
PS Dyn OTC	PWO	ESC	29.36	33.12	22.21	12.29	7.94	3.71	62.00	****
PS Dynmc Consmr Staples	PSL	EA	30.77	29.25	20.78	6.75	5.93	2.79	42.15	****
PS Dynmc FncI	PFI	EA	36.79	27.23	18.29	9.91	6.61	2.92	26.13	****
PS Dynmc Food & Bev	PBJ	EA	33.43	33.39	23.49	10.53	6.12	2.74	26.01	****
PS Dynmc Healthcare	PTH	EA	39.19	33.62	22.33	12.15	7.26	3.86	43.27	****
PS Dynmc Leisure & Enter	PEJ	EA	41.36	34.48	21.11	9.79	6.80	3.34	29.86	****
PS FTSE RAFI US 1500 Sml-Mid	PRFZ	EMC	39.54	32.14	18.16	12.34	7.25	3.53	86.89	****
PS Gbl Clean Enrgy	PBD	EW	53.90	45.03	26.44	15.62	8.41	5.80	10.57	****
PS Gldn Drgn USX China	PGJ	EW	43.55	30.02	22.78	23.40	14.40	4.90	24.07	****
PS S&P SmlCap Cnsmr Dis	PSCD	EA	42.47	34.21	21.14	12.53	5.10	3.27	42.63	****
PS S&P SmlCap Cnsmr Stpl	PSCC	EA	32.67	33.26	24.45	12.28	8.32	3.44	45.16	****
PS S&P SmlCap Hlth Care	PSCH	EA	36.94	38.54	25.58	19.91	9.86	4.36	47.25	****
PS S&P SmlCap Indstrils	PSCI	EA	41.49	31.04	13.68	12.96	7.61	3.94	39.01	****
PS S&P SmlCap Info Tech	PSCT	EA	32.89	30.82	18.16	15.35	7.35	3.47	38.26	****
PS Zacks Micro Cap	PZI	ESC	42.28	35.54	20.40	13.69	7.95	3.93	15.21	****
Select SPDR Cnsmr Disc	XLY	EA	38.57	30.51	19.17	9.06	5.27	2.96	59.37	****
Select SPDR FinancIs	XLF	EA	42.29	30.65	18.77	10.01	5.35	3.69	20.49	****
Select SPDR Health	XLV	EA	35.47	29.28	19.95	8.28	7.16	2.93	51.02	****
SPDR S&P Regional Banking	KRE	EA	39.48	33.78	24.29	19.04	8.62	3.78	36.80	****
SPDR S&P Retail	XRT	EA	40.44	32.80	22.28	11.50	6.62	3.08	81.68	****
Vngrd Consmr Dis	VCR	EA	40.74	31.13	19.35	9.84	5.37	2.94	96.03	****
Vngrd Extnd 4500	VXF	ELC	35.77	29.48	15.81	8.88	7.12	3.15	74.80	****
Vngrd Fincl Srv	VFH	EA	37.94	28.14	16.99	8.03	5.09	3.30	41.94	****
Vngrd Health	VHT	EA	36.36	30.86	20.58	9.04	7.64	3.06	92.99	****
Vngrd Small Cap	VB	ESC	35.41	29.05	16.33	9.46	6.79	3.23	100.07	****
Vngrd Small Cap Value	VBR	ESC	35.13	28.53	15.66	8.77	6.85	3.07	89.43	****
Wtree MidCap Earn	EZM	EMC	40.39	32.04	16.70	10.51	7.42	3.23	77.31	****
Wtree Sml Cap Div	DES	ESC	36.03	28.86	17.94	10.32	7.60	2.99	62.66	****

This page shows the top ranked ETF Growth Database. It shows performance over the last 12, 9, 6, 3, and 1 months through the previous month's end. V is Volatility. NAV is price. CS is Comet Strength (not shown). C is Comet, which is an ETF's risk-adjusted performance; the higher the better (not shown). This gives us the Rank column (shown).

Generally speaking, we want to own the top-ranked ETFs with 5 and 4 comets. (Comets, not stars, because unlike stars that are fixed, comets come into and out of prominence. We want our thinking, our metaphor aligning with reality.

Middle ETF Growth Ranking to same month end

Fund Name	Symbol	Style	12m	9m	6m	3m	1m	V	NAV	Rank
Alerian MLP	AMPLP	EGI	15.23	12.44	6.29	1.68	-0.11	2.05	17.83	***
Guggnhm China Sml	HAO	EWR	22.06	7.97	-8.76	-5.22	2.21	4.30	22.70	***
Guggnhm Dfnsv Eqty	DEF	EV	17.48	16.44	10.09	0.57	2.89	2.17	33.50	***
Guggnhm Glbl Div	LVL	EW	11.79	3.37	-4.19	-5.81	2.54	3.61	12.51	***
Guggnhm Glbl Wtr	CGW	EW	20.84	17.21	5.86	1.32	5.27	2.87	24.56	***
Guggnhm Insdr Sent	NFO	EMC	33.93	27.21	15.62	9.37	8.52	3.28	43.31	***
Guggnhm Intrntl A Incm	HGI	EW	13.03	9.07	-0.25	-1.13	4.42	3.18	17.02	***
Guggnhm MidCap Core	CZA	EMC	30.46	26.45	14.31	6.14	4.38	2.39	41.46	***
Guggnhm Multi Ast In	CVY	EV	16.72	13.25	6.27	0.85	3.75	2.37	24.05	***
Guggnhm Shipping	SEA	EA	18.19	19.71	5.70	6.56	4.35	3.14	18.01	***
Guggnhm Timber	CUT	EA	40.54	25.36	8.09	3.31	7.79	4.44	23.39	***
iShares Canada	EWC	EW	7.73	-0.59	-3.18	-0.25	5.66	3.02	27.63	***
iShares Cohen&Str REIT	ICF	ERE	3.62	7.61	1.49	-7.81	0.25	2.75	80.82	***
iShares Core S&P 500	IVV	ELC	25.15	21.80	13.79	6.20	5.39	2.77	169.55	***
iShares Core S&P Mid Cap	IJH	EMC	33.02	27.21	13.55	6.68	6.51	2.90	123.02	***
iShares DJ Slct Div	DVY	EGI	22.12	19.97	14.29	4.03	5.51	2.20	67.54	***
iShares DJ US Home Constr.	ITB	EA	38.19	9.03	-4.88	-8.15	-0.45	4.99	22.28	***
iShares EAFE Indx	EFA	EW	24.45	16.14	4.38	-0.61	5.32	3.66	60.35	***
iShares Europe 350	IEV	EW	26.83	15.80	3.98	2.98	7.79	4.07	41.77	***
iShares Germany Indx	EWG	EW	32.51	16.74	4.16	5.15	6.56	4.46	26.32	***
iShares Hong Kong Indx	EWH	EW	17.74	6.60	-3.46	-4.27	4.42	3.69	19.14	***
iShares Italy Indx	EWI	EW	26.46	6.88	-6.58	0.88	10.08	7.87	13.00	***
iShares Japan	EWJ	EW	26.78	25.80	13.11	-3.61	0.09	4.13	11.23	***
iShares Malaysia Indx	EWM	EW	7.49	3.39	6.07	-3.12	-2.83	2.52	15.11	***
iShares Prfrd	PFF	EGI	4.46	1.16	-0.73	-3.37	-0.54	1.09	38.91	***
iShares REIT	IYR	ERE	5.72	7.21	0.76	-8.51	0.24	2.69	66.59	***
iShares Russel MidVal	IWS	EMC	33.35	26.72	13.60	5.81	5.50	2.83	60.78	***
iShares Russell 1000 Grwth Indx	IWF	ELC	21.70	19.70	12.84	5.35	5.55	2.70	76.47	***
iShares Russell 1000 Value Indx	IWD	ELC	30.64	24.49	14.58	7.20	5.41	2.80	87.83	***
iShares Russell 2000 Value Indx	IWN	ESC	34.15	27.43	14.80	9.16	6.54	3.09	90.98	***
iShares S&P 100 Indx	OEF	ELC	21.56	18.89	13.11	5.83	5.25	2.71	75.73	***
iShares Singapore	EWS	EW	5.96	4.38	-1.39	-5.97	4.22	3.58	13.33	***
iShares Slct Div	IDV	ELC	17.30	8.79	0.43	-3.50	6.53	4.09	33.91	***
iShares Spain	EWP	EW	42.47	15.05	1.49	2.14	12.96	8.24	31.28	***
iShares Taiwan Indx	EWT	EW	14.25	10.27	1.72	-2.64	2.48	3.29	13.63	***
iShares EMU Indx	EZU	EW	33.60	17.82	4.20	4.78	8.74	5.00	35.32	***
Market Vectors Oil Services	OIH	EA	15.93	17.59	2.84	4.84	4.82	3.67	44.84	***
Market Vectors Semiconductor	SMH	EA	22.21	26.73	12.42	4.08	2.31	3.29	38.56	***
PS BLDR Asia 50 ADR	ADRA	EW	21.02	17.47	3.73	-2.21	4.67	3.44	27.82	***
PS BLDR Dvlpd Mrkt 100 ADR	ADRD	EW	23.74	16.45	3.91	0.62	5.25	3.57	22.66	***
PS BLDR Europe 100 ADR	ADRU	EW	23.61	12.83	2.28	2.00	6.36	3.91	22.42	***
PS Cleantech	PZD	EA	34.36	28.05	11.75	8.13	7.35	3.69	27.18	***
PS DB Energy	DBE	EA	8.11	4.75	-2.25	3.50	5.45	4.20	28.65	***
PS DB Oil	DBO	EA	9.16	10.22	-0.62	5.74	5.25	4.95	27.28	***
PS Dividend Achievers	PFM	EGI	19.68	18.26	11.47	3.86	5.06	2.24	18.91	***
PS DWA Dvlpd Mrkt T Ldrs	PIZ	ELC	28.79	17.57	8.92	3.64	7.58	3.44	22.70	***
PS DWA Tech Ldr	PDP	ELC	25.09	20.81	12.55	3.65	5.22	2.27	32.86	***
PS Dyn Mrkt	PWC	ELC	31.81	29.19	14.54	7.05	6.76	3.56	59.87	***
PS Dynmc Basic Matr	PYZ	EA	28.60	20.04	4.92	4.13	5.80	3.48	44.89	***
PS Dynmc Bldg Cnstrctn	PKB	EA	43.88	19.97	4.85	0.31	4.46	5.08	19.69	***
PS Dynmc Energy	PXI	EA	27.85	21.71	4.59	3.02	4.41	4.07	49.67	***
PS Dynmc Energy Explor	PXE	EA	33.39	22.22	3.14	3.18	5.40	5.53	31.05	***
PS Dynmc Lrg Cap Grth	PWB	ELC	25.72	23.01	14.45	6.44	5.41	2.66	22.61	***
PS Dynmc Lrg Cap Value	PWV	ELC	30.83	24.75	15.83	6.08	5.06	2.80	26.59	***
PS Dynmc Networking	PXQ	EA	22.60	24.73	9.52	15.19	9.58	4.74	28.60	***
PS Dynmc Oil & Gas Svcs	PXJ	EA	23.74	23.68	3.82	5.71	3.08	4.06	23.74	***
PS Dynmc Semicndctr	PSI	EA	16.10	26.32	13.02	11.91	6.49	3.56	16.91	***
PS Dynmc Software	PSJ	EA	22.96	18.37	12.23	6.56	7.67	3.22	32.02	***
PS Dynmc Technology	PTF	EA	25.98	28.67	16.91	11.20	7.56	3.70	32.28	***
PS Dynmc Utilities	PUI	EA	18.12	15.82	12.85	2.17	5.35	2.79	20.09	***
PS Fincl Pfd	PGF	EGI	2.36	-0.33	-1.68	-4.49	-1.28	1.18	17.57	***
PS FTSE RAFI Dvlp Mrkt xUSA	PXF	EW	27.37	16.59	4.35	1.18	6.55	4.11	39.23	***
PS FTSE RAFI Dvlp Mrkt xUSA Sml	PDN	EW	24.73	15.54	4.83	0.31	6.30	3.49	25.30	***
PS Glbl Listd Prvt Eqty	PSP	EW	39.20	26.89	11.05	1.61	6.23	4.13	11.59	***
PS Glbl Water	PIO	EW	20.57	17.99	5.39	2.56	5.26	2.99	19.80	***
PS Hi Yld Eqty Div	PEY	EGI	25.93	21.36	15.26	6.08	5.72	2.27	11.31	***
PS Intrntl Dvdnd	PID	EW	17.14	11.84	2.87	-2.02	2.75	2.94	16.80	***
PS Lux Nanotech	PXN	EA	16.90	21.65	10.71	4.20	5.55	3.96	7.04	***
PS MENA Frntr Countries	PMNA	EW	14.52	12.26	9.05	7.67	6.45	2.81	11.72	***

This shows the ETF Growth Database and Ranking. It shows performance over the last 12, 9, 6, 3, and 1 months through the previous month's end. V is Volatility. NAV is price. Rank shows the number of comets from 5 to 1. The larger the better.

Middle ETF Growth Ranking to same month end

Fund Name	Symbol	Style	12m	9m	6m	3m	1m	V	NAV	Rank
PS QQQ	QQQ	ELC	18.57	17.96	13.93	7.48	6.31	3.04	75.77	***
PS S&P 500 BuyWrite	PBP	ELC	4.14	3.34	3.55	-0.37	1.44	1.50	20.43	***
PS S&P 500 LowVolatility Portfolio	SPLV	ELC	18.71	17.73	13.29	1.21	4.19	2.41	32.35	***
PS S&P SmlCap Energy	PSCE	EA	32.86	29.76	18.82	8.95	7.09	4.51	41.98	***
PS S&P SmlCap Fincl	PSCF	EA	28.59	26.13	15.46	7.78	5.04	2.60	37.28	***
PS S&P SmlCap Mtrls	PSCM	EA	38.79	26.45	10.68	9.40	7.46	4.25	37.72	***
PS S&P SmlCap Utilities	PSCU	EA	15.69	16.32	13.21	2.69	7.20	3.24	34.83	***
PS US REIT	PSR	ERE	5.24	8.32	1.60	-7.46	-0.73	2.54	59.55	***
PS Water Resources	PHO	EA	25.66	18.54	4.74	4.83	4.49	3.37	23.03	***
PS WilderHill Prgsv Enrgy	PUW	EA	21.99	18.13	4.87	4.73	5.03	3.77	28.38	***
Select SPDR Cnsmr Stpl	XLP	EA	19.67	19.63	13.54	1.75	4.34	2.55	41.39	***
Select SPDR Div	SDY	EGI	27.95	23.70	14.64	4.95	5.78	2.40	70.13	***
Select SPDR Enrgy	XLE	EA	20.59	16.23	7.54	5.81	5.26	3.57	82.42	***
Select SPDR Infd	XLI	EA	29.07	25.85	13.74	9.51	5.91	2.73	45.16	***
Select SPDR Matrls	XLB	EA	19.23	14.69	4.97	3.14	5.55	3.15	40.48	***
Select SPDR Technlgy	XLK	EA	10.53	11.56	8.92	3.54	3.73	2.75	31.73	***
Select SPDR Utilities	XLU	EA	7.81	9.63	9.35	-4.28	4.33	3.39	39.26	***
SPDR DJ Gbl Titans	DGT	EW	25.09	18.72	7.41	3.62	6.26	3.00	62.43	***
SPDR DJ Industrials	DIA	ELC	22.37	20.78	13.20	5.26	4.37	2.65	154.84	***
SPDR Euro Stoxx 50	FEZ	EW	33.35	16.58	3.00	4.68	8.87	5.35	36.07	***
SPDR Mid Cap Trust	MDY	EMC	32.51	27.03	13.37	6.61	6.67	2.92	224.11	***
SPDR S&P 500	SPY	ELC	25.26	21.38	13.80	6.21	5.17	2.70	168.71	***
SPDR S&P Homebuilders	XHB	EA	43.85	16.10	4.59	-0.57	2.28	3.99	30.09	***
SPDR S&P Oil & Gas Expl. & Prod.	XOP	EA	23.42	17.36	7.98	9.05	7.17	4.76	62.35	***
SPDR Wish REIT	RWR	ERE	6.26	9.74	2.80	-6.90	0.72	2.76	76.50	***
US Oil Fund	USO	EA	14.32	17.56	5.90	12.67	9.30	5.79	37.36	***
Vngrd Cnsmr Stpls	VDC	EA	21.37	21.08	14.55	2.84	4.53	2.51	106.62	***
Vngrd Div Aprprctn	VIG	EGI	23.57	20.55	11.66	5.01	5.41	2.38	69.78	***
Vngrd Europe Pacific	VEA	EW	24.39	16.10	4.45	-0.76	5.20	3.64	37.45	***
Vngrd European Indx	VGK	EW	27.42	16.19	4.25	2.88	7.63	4.09	51.80	***
Vngrd Grth	VUG	ELC	21.74	19.10	11.74	5.11	5.58	2.74	82.51	***
Vngrd Large Cap	VV	ELC	25.81	21.83	13.78	6.21	5.35	2.72	77.34	***
Vngrd Materials	VAW	EA	20.63	14.14	4.56	3.32	5.77	3.20	91.52	***
Vngrd MidCap Val	VO	EMC	32.09	27.15	14.50	6.43	5.72	2.85	100.58	***
Vngrd REIT	VNQ	ERE	7.84	10.90	3.35	-7.01	0.90	2.81	69.34	***
Vngrd Small Cap Grth	VBK	ESC	34.40	28.94	16.39	10.45	6.79	3.41	109.93	***
Vngrd Tech	VGT	EA	14.26	15.02	10.43	6.44	5.45	3.00	78.01	***
Vngrd TTL Intrntl Stk	VXUS	EW	18.13	10.44	0.75	-2.45	4.62	3.36	47.79	***
Vngrd TTL Stock	VTI	ELC	27.04	22.91	14.22	6.78	5.75	2.81	87.42	***
Vngrd Utilities	VPU	EA	10.61	11.83	10.38	-3.19	4.43	3.29	85.83	***
Wtree DEFA	DWM	EW	21.78	14.73	3.32	-1.41	5.98	3.87	48.77	***
Wtree DEFA Eqty Incm	DTH	EW	22.33	14.15	3.09	-1.86	5.80	3.95	42.33	***
Wtree Div Ex Fincl	DTN	ELC	21.96	18.92	12.04	2.72	3.97	2.44	64.59	***
Wtree Emrg Mrkt SC Div	DGS	EW	10.15	3.46	-6.07	-10.85	0.17	3.03	46.12	***
Wtree Eqty Income	DHS	EGI	17.42	16.94	11.77	0.82	3.04	2.48	53.13	***
Wtree Eur SC Div	DFE	EW	44.53	27.50	9.07	8.88	8.66	4.57	46.05	***
Wtree Gbl Eqty Incm	DEW	EW	14.76	8.32	1.12	-2.01	5.14	3.11	44.16	***
Wtree Intrntl Div Ex Fincl	DOO	EW	16.00	8.90	0.78	-1.60	5.66	3.56	42.36	***
Wtree Intrntl LC Div	DOL	EW	20.13	12.78	2.46	-1.44	6.03	3.85	46.75	***
Wtree Intrntl MC Div	DIM	EW	26.79	17.49	4.84	-0.31	5.73	3.61	53.15	***
Wtree Intrntl SC Div	DLS	EW	31.16	19.50	4.89	-1.73	5.72	3.79	55.23	***
Wtree Intrntl Utilities	DBU	EW	10.91	3.98	-1.82	-4.81	3.69	3.63	17.71	***
Wtree Japan Hedge Eqty	DXJ	EC	47.00	43.47	13.86	-4.59	-1.07	4.92	45.12	***
Wtree Japan SC Div	DFJ	EWR	18.04	16.40	9.42	-6.47	0.82	3.69	47.72	***
Wtree LrgCap Div	DLN	ELC	20.16	18.24	12.34	3.94	4.36	2.32	62.29	***
Wtree MidCap Div	DON	EMC	30.82	25.07	14.50	5.49	6.12	2.63	69.43	***
Wtree Middle East Div	GULF	EW	34.58	27.38	15.36	3.86	4.06	3.20	17.96	***
Wtree S&P 500	EPS	ELC	26.17	22.35	14.25	6.97	5.01	2.75	59.07	***
Wtree Ttl Earn	EXT	ELC	26.83	22.89	14.49	7.00	4.81	2.79	60.83	***

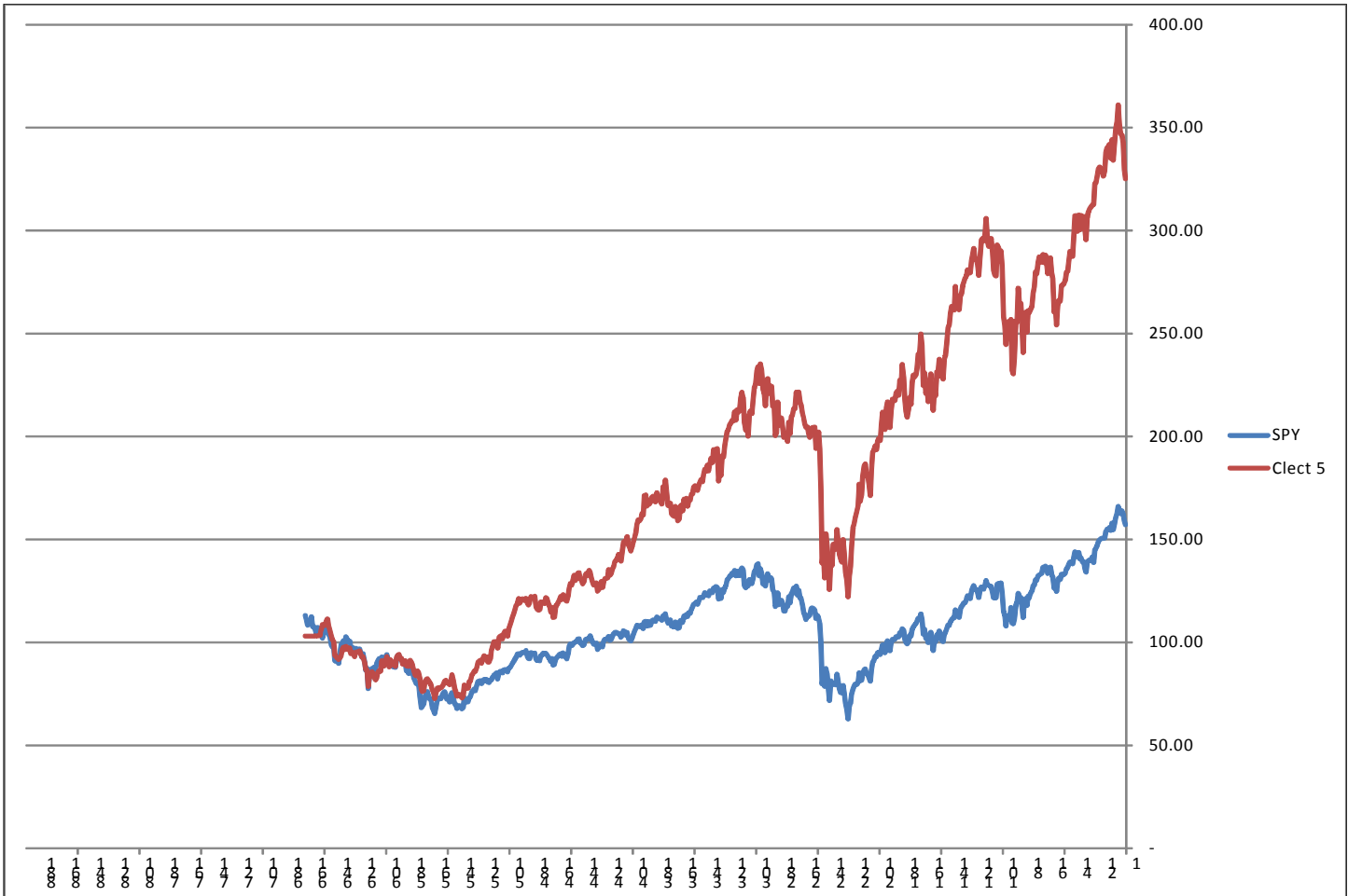
This shows the ETF Growth Database and Ranking. It shows performance over the last 12, 9, 6, 3, and 1 months through the previous month's end. V is Volatility. NAV is price. Rank shows the number of comets from 5 to 1. The larger the better.

Bottom ETF Growth Ranking to same month end

Fund Name	Symbol	Style	12m	9m	6m	3m	1m	V	NAV	Rank
Guggnhm BRIC	EEB	EW	-3.72	-6.42	-12.50	-9.01	4.01	3.86	31.93	**
Guggnhm Candn Enrg Incm	ENY	EWR	-4.38	-9.01	-5.29	0.42	8.51	4.37	14.53	**
Guggnhm China All	YAO	EWR	10.47	0.33	-10.16	-2.71	5.52	4.10	23.71	**
Guggnhm China REIT	TAO	EWR	14.18	3.70	-12.99	-9.50	2.16	4.93	20.77	**
Guggnhm Frntr	FRN	EW	-14.69	-17.15	-22.17	-14.29	-0.93	3.61	15.90	**
iShares Australia	EWA	EW	6.39	0.34	-8.86	-15.28	3.01	4.74	23.26	**
iShares China	FXI	EW	3.02	-4.20	-15.20	-6.82	5.35	4.93	34.26	**
iShares Emrg Mrkt Stk	EEM	EW	1.64	-3.37	-10.65	-8.73	1.32	3.11	39.01	**
iShares Gold	IAU	EG	-18.19	-23.27	-20.62	-10.38	7.26	4.24	12.86	**
iShares Latin Amr	ILF	EW	-11.35	-11.98	-19.05	-15.01	-1.58	3.74	36.18	**
iShares Mexico	EWV	EW	7.35	1.80	-9.61	-8.02	1.26	4.56	66.07	**
iShares South Korea Indx	EWY	EW	1.02	-2.47	-6.28	-4.43	4.94	4.33	55.83	**
Market Vectors Russia	RSX	EW	0.33	-4.72	-16.03	-3.22	2.78	5.21	25.88	**
PS BLDR Emrg Mkt 50 ADR	ADRE	EW	-4.17	-7.13	-12.42	-8.78	3.03	3.52	35.40	**
PS DB Agriculture	DBA	EA	-18.25	-14.86	-11.75	-6.06	-1.08	2.91	24.63	**
PS DB Base Metals	DBB	EG	-9.00	-9.06	-16.35	-3.44	0.68	4.22	16.27	**
PS DB Commodity	DBC	EA	-4.84	-5.91	-8.92	-1.29	3.18	3.42	25.93	**
PS DB Gold	DGL	EG	-19.80	-24.61	-21.70	-11.14	7.03	4.32	44.61	**
PS DWA Emrg Mrkt T Ldrs	PIE	EW	9.04	4.61	-2.64	-13.19	1.11	3.77	18.21	**
PS Emrg Mrkt Infrastrctr	PXR	EW	-1.99	-8.35	-17.07	-10.96	1.68	3.79	36.27	**
PS FTSE RAFI Asia Pac xJpn	PAF	EW	7.37	1.68	-6.83	-9.56	5.46	4.11	53.12	**
PS FTSE RAFI Emrg Mrkt	PXH	EW	-2.32	-6.73	-14.26	-10.97	1.51	3.56	19.44	**
PS Gbl Agriculture	PAGG	EA	-4.13	-5.50	-13.79	-11.84	-5.29	3.12	27.73	**
PS India	PIN	EW	-0.31	-7.89	-16.52	-13.52	-1.39	5.29	16.31	**
Pro Shares Short Russell 2000	RWM	ESC	-28.62	-24.90	-15.84	-10.58	-7.03	3.45	19.18	**
Pro Shares Short S&P 500	SH	EC	-21.74	-19.01	-13.00	-6.24	-5.32	2.83	28.11	**
SPDR Gold	GLD	EG	-18.23	-23.30	-20.62	-10.37	7.43	4.25	127.96	**
SPDR S&P Metals & Mining	XME	EA	-9.01	-18.88	-18.10	-3.57	7.57	6.02	35.67	**
Vngrd Emrg Mrkt	VWO	EW	1.38	-3.46	-11.01	-9.50	0.67	3.14	39.06	**
Wtree Emrg Mrkt Eincm	DEM	EW	-0.89	-4.58	-11.76	-10.24	1.90	3.03	49.25	**
Wtree Intrntl REIT	DRW	ERE	10.89	3.46	-5.89	-10.94	1.80	3.92	27.75	**
Wtree World Ex US Grth	DNL	EW	6.31	0.75	-7.96	-6.71	1.90	3.24	48.33	**
iShares Brazil Indx	EWZ	EW	-14.67	-16.11	-21.90	-19.61	-0.82	4.08	43.50	*
iPath S&P 500 VIX Shrt Trm	VXX	EC	-72.38	-59.28	-38.09	-20.56	-27.23	14.26	15.07	*
iShares Silver	SLV	EG	-29.42	-38.79	-37.12	-18.41	0.90	6.94	19.14	*
Market Vectors Gold Minors	GDX	EG	-36.34	-48.46	-35.15	-11.10	10.21	8.04	26.99	*
Market Vectors Junior Gold Miners	GDXJ	EG	-45.31	-56.46	-46.47	-21.08	10.45	10.17	40.47	*
PS DB Precious Metals	DBP	EG	-21.80	-27.60	-24.98	-12.40	6.11	4.69	42.89	*
PS DB Silver	DBS	EG	-31.00	-40.32	-38.67	-19.52	1.41	7.23	33.19	*
PS Gbl Gold Precious Mtls	PSAU	EG	-34.09	-46.91	-35.04	-12.24	10.70	8.07	21.93	*
US Natural Gas	UNG	EA	-17.38	-16.24	-2.93	-22.41	-3.91	8.22	18.21	*
Wtree India	EPI	EWR	-5.30	-13.57	-22.48	-17.24	-3.77	6.10	15.59	*

This shows the ETF Growth Database and Ranking. It shows performance over the last 12, 9, 6, 3, and 1 months through the previous month's end. V is Volatility. NAV is price. Rank shows the number of comets from 5 to 1. The larger the better.

C-lect 5 (reiteration)



Overflow from Page 1, Definitions, and Newsletter Updates

(Continued from page 1) **REVIEW**

above their 35-week moving average on page 11.

As you can see, the percentage of ETFs above their 35-week moving average is declining, even though the stock market as measured by the SPY is hitting new highs.

So, technically speaking, things are beginning to weaken internally.

On a fundamental basis, the economy continues to chug along, not too hot and not too

cold. The unemployment rate is still coming down, while inflation remains muted about 2%.

Most likely, therefore, the Fed will begin its taper program next month. This is simply giving the stock market an excuse to grow cautious. The market does not like uncertainty. The big question is whether the economy can self-sustain if the Fed pulls back. As more and more work comes out that quantitative easing effects have diminished over time, the economy should contin-

ue to plod along.

So, stocks may be in for a correction, but the underlying economy should continue to expand. This would reduce the market's overvaluation and provide further support for it in the months ahead.

Please see the individual portfolio pages for any changes.

Just to clarify a couple of terms that I use regularly.

Short-term is days to weeks.

Intermediate-term is weeks to months.

Long-term is months to years.

Cyclical is 1-5 years.

Secular is 5 years to decades.

Bull market is a series of higher highs and higher lows.

Bear market is a series of lower lows and lower highs.

Neutral market is sideways without a discernible pattern.

Oddly, bull and bear markets may occur simultaneously, but only over different time periods. For example, we may be in a secular bear market, but there are cyclical bull and bear markets within that.

Closing stops are "mental". I look at the position at quarter to the close. If it is trading below the stop (or above if short), then I act with the assumption the security will trigger that closing stop on that day. I sell (or cover) at the close that day.

New portfolio stops for the World Growth Model are being implemented. These are internally maintained because they may change daily. They will be emailed when close or if triggered.

8/26 No new updates.

8/12 No changes.

8/5 No changes.

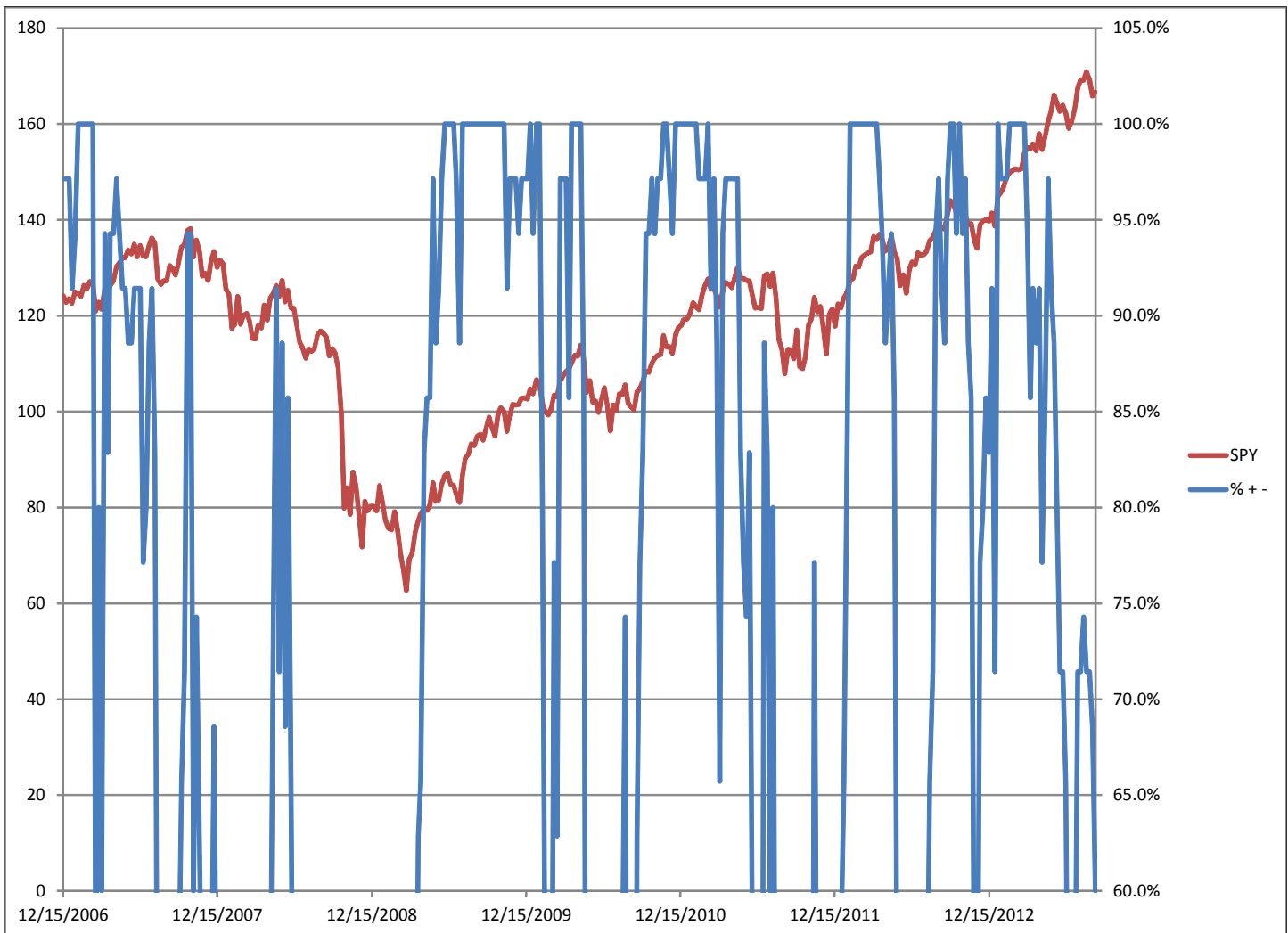
7/29 No new updates.

7/22 Work continues on the new selecting model. Shown on the previous page is Clect 5 (last week inadvertently mentioned a 20-week moving average overlay).

7/15 C-lect 5 is shown this week. It is based on selecting the top 5 ETFs on a weekly basis by the top C (risk-adjusted relative performance). It too is only the selection process without timing. The final model will include both selections and timing.

7/8 The monthly ETF rankings though 6/30 have been updated. When the C-lection model is done, the plan is to change the rankings to weekly. Incidentally, the C-lect model may end up being 10 or 8 or 12; it depends on the backtesting results. We want diversification that improves results, but not diversification for the sake of diversification.

% of ETFs Above 35-week moving average



The percentage of ETFs (a basket of 35 equity ETFs) above their 35-week moving average is shrinking, even as the SPY (S&P 500 index) continues to climb. This is potentially a worrisome negative divergence.

Consider the rallies in 2006 where the SPY hit recovery highs, while the % continued to decrease. The same scenario unfolded in the summer of 2010. In both instances, the subsequent action led to a severe bear market and a sharp pullback.

So, while the “general” the SPY leads, the troops are falling behind. This bears close watching.

Descriptions & Disclosures

PORTFOLIO DESCRIPTIONS (pages 2 and 6)

Our guiding goal is to provide the most return with the least risk consistently over time through bull and bear markets.

Income Portfolio, page 2: Uses a proprietary selection methodology on all of the monitored bond-oriented ETFs to pick the top ETFs. I then use a proprietary timing model to decide whether to buy, sell, hold, or avoid. From time to time, timing considerations may take precedence over selections; in other words, we may own lower ranked funds because of anticipated timing changes.

Growth Portfolio, page 6: As of 12/10/12, it is based on the World Growth Index (WGI), which is made up of a static fully invested 20% in each of five ETFs (EEM, EFA, IWM, QQQ, SPY). The Portfolio will buy and sell the WGI based on proprietary timing signals.

Both portfolios were started on 1/1/10 with \$100,000. However, the Growth Portfolio strategy was changed on 12/10/12 to the World Growth Model.

Portfolio changes will usually be made at the close on Monday, unless otherwise noted in any emailed hotline update or triggered stop orders. Issues are normally posted on Mondays by 1:35pm cst (Tuesday if Monday is a holiday).

Portfolios are updated through the Friday close the week before.

Dividends are reinvested in additional shares.

Commissions of \$10 per trade are applied. Interest is zero for the money market (cash) position.

SUBSCRIPTIONS: To receive *ETF Selections & Timing*, you may subscribe in one of three ways. You may subscribe on the web site InvestmentST.com using PayPal or call 1-800-800-6563 for Amex, Visa, MasterCard, or Discover orders or send a check to the address on the front page. Subscriptions may be tax deductible.

The recurring monthly subscription is \$24.00. An annual subscription is \$240.00. Subscribers receive this weekly eNewsletter. There is no mailed issue. Subscribers retrieve the current weekly issue at the web site InvestmentST.com by logging in with a user name and password. There may also be emailed Hotline reports sent between issues.

Unless otherwise noted, the weekly eNewsletter is posted by 1:35 PM central time each Monday, except for holidays and then on Tuesday. It may contain actionable, specific buy or sell advice to take that day at the Monday close in each portfolio. We may also use stop orders. For stops, check the ETF at quarter to the close. If it is below (or above) a stop level, assume it will close there and act on that. Portfolio data will be updated through the previous Friday's close. Fund symbols, rather than names, are the official identification used for activity.

GUARANTEE: Subscriptions may be cancelled at any time. Annual subscriptions are refundable for the weekly term remaining with a four-week minimum charge, using a 52-week count. Monthly subscriptions just expire.

PUBLISHER: Watercourse Way Holdings, LLC publishes this newsletter.

REPRINTS: This eNewsletter is intended for subscribers only, reprints are not permitted.

DISCLAIMER: The information contained herein is assembled from sources who are believed reliable, but the accuracy of data or advice cannot be guaranteed. Past performance does not guarantee future performance. Portfolio values include a commission of \$10/trade, dividend reinvestment, and short-term redemption charges. The World Growth Index and World Income Index are equity and bond indexes and may or may not be useful in comparing returns. Security values fluctuate. Information is provided without consideration for a subscriber's personal situation. Watercourse Way Holdings, LLC its members and associates may or may not invest identically to or at the same time as portfolios or advice shown herein.

COPYRIGHT: Copyright, 2009-13, Watercourse Way Holdings, LLC. All rights reserved.