

# ETF Selections & Timing

## Watercourse Way Holdings, LLC

P.O. Box 830396  
Richardson, TX 75083-0396  
972-680-2366

InvestmentST.com

May 9, 2011 (data through previous Friday close)

Volume 2  
Issue 19

## Back In Gear

The stock market is back in gear to the upside.

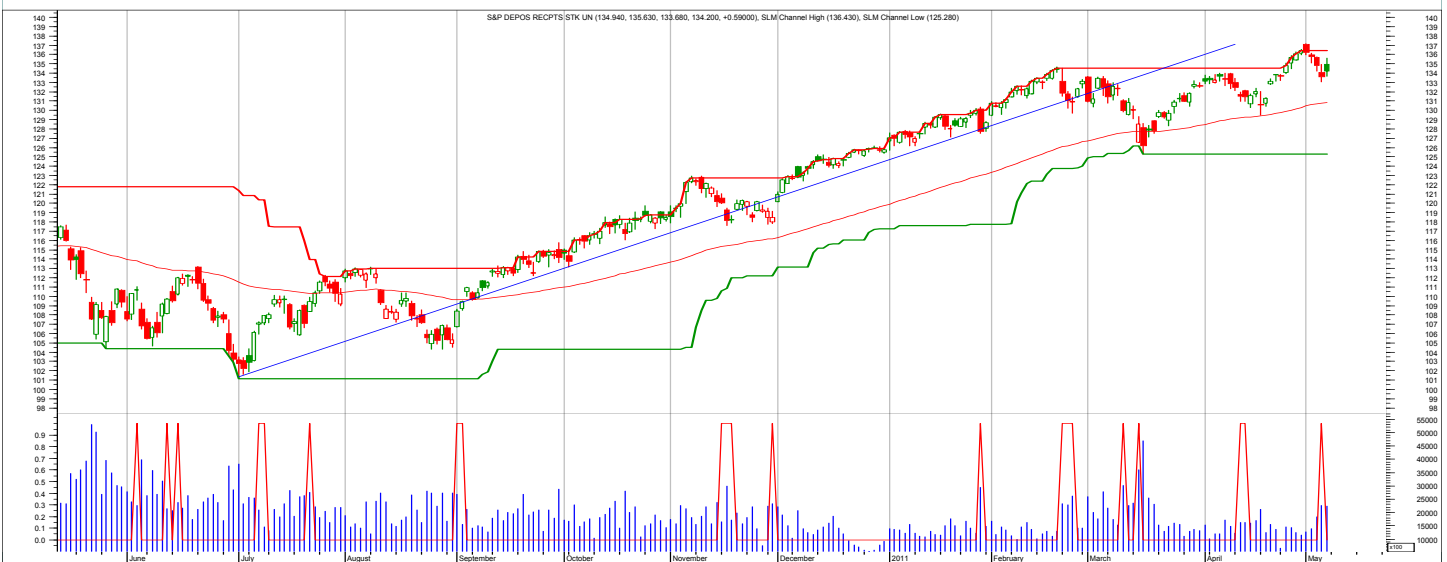
What this means is not that it won't correct, it probably will. But what it means is even if it does correct, recovery highs should be expected. It means that, other things remaining the same, that one or three or six

months from now, the market should be higher than where it is now.

It is on that subsequent rally that we will again watch for potential weakness to form. It's not until those negative divergences appear and remain that the stock market indicates a po-

tential long-term top is taking place.

So for now, we were stopped out of a few positions in the Growth Portfolio, but I am looking to reenter some of them. Silver is not one of them. See pages six and 11 for more information.



The chart shows the daily S&P 500 with red smoothed line an 80-day moving average. The lower part shows blue volume and red spikes as possible trading signals.

## SCOREBOARD

Model	YTD	52-week	26-week	13-week	4-week	1-week
ETF Income Portfolio	1.3%	5.8%	-1.2	2.2	0.9	0.0%
ETF Growth Portfolio	5.0%	10.4%	5.4	4.3	0.9	-0.7%
Aggrgt Bond (AGG)	0.8%	2.1%	-1.8	2.3	2.0	0.2%
Wilshire 5000	6.5%	22.4%	10.0	2.4	0.7	-1.9%

## CONTENTS

Pages 2-5	Income
Pages 6-11	Growth
Page 12	Overflow
Page 13	Disclaimers

# Income Portfolio

ACTION FOR			PORTFOLIO DETAILS				Value as of date: 5/6/2011						
Action Date	Action	Symbol	Action Price	# of Shares	Action Value	Symbol	Closing Stop	Description	Start Price	Ending Price	# of Shares	Current Value	Percent of Total
3-Feb	sell	TLT	89.72	202	18,113								
4-Feb	sell	TIP	105.83	125	13,219								
14-Feb	buy	TIP	105.53	200	21,096	TIP	109.50	inftn adjst	105.53	110.94	200.9	22,293.28	21.0%
14-Feb	buy	AGG	104.35	200	20,860	AGG	105.00		105.63	106.62	500.0	53,310.00	50.2%
14-Feb	buy	TLT	89.52	230	20,580								
10-Mar	buy	TLH	112.37	200	22,464								
6-Apr	sell	AGG	104.60	374	39,079								
6-Apr	sell	TLT	90.54	232	20,995								
6-Apr	sell	TLH	110.51	201	22,169								
18-Apr	buy	AGG	105.63	500	52,825								
						Money Market				1.00	30,634	30,634.00	28.8%
										Total Valuation=		106,237.28	100.0%

## WEEKLY REVIEW

5/9/11 No changes.

5/2/11 No changes.

4/25/11 No changes.

4/18/11 After getting stopped out, the bond market appears to have turned again. Buy as noted above.

4/11/11 Three of the four bond positions were stopped out last week as the Treasury market began to slide again. The counter rally should have held at support, but it didn't.

4/4/11 No changes.

3/28/11 No changes. Sitting tight through the current pullback. It should turn and rally.

Annual Performance	2010	2011
ETF Income Portfolio	4.8	
Aggregate Bond	2.5	

# ETF Income Database and Ranking to 4/30/11

<i>Fund Name</i>	<i>Symbol</i>	<i>Style</i>	<i>12m</i>	<i>9m</i>	<i>6m</i>	<i>3m</i>	<i>1m</i>	<i>V</i>	<i>NAV</i>	<i>Rank</i>
SPDR Intrntl TBond	BWX	B	13.78	10.03	2.47	6.46	4.88	2.41	62.75	*****
Wtree Dryfs Euro	EU	B	13.24	15.12	8.58	9.76	5.61	3.45	24.29	*****
Currency Euro	FXE	B	11.12	13.60	6.38	8.18	4.52	3.44	147.54	****
iShares Intrntl Tbond	IGOV	B	9.94	7.42	1.23	5.13	3.92	2.27	108.60	****
iShares Trsfy Inflt	TIP	B	4.81	4.50	-0.41	3.37	1.83	1.12	111.16	****
PS DB Dollar Bearish	UDN	B	11.06	11.96	6.10	6.22	3.80	2.59	29.21	****
Wtree Dryfs Chns Yuan	CYB	B	2.14	3.17	0.78	1.90	1.50	0.72	25.74	****
Wtree Dryfs Emrg Crrncy	CEW	B	5.68	7.39	2.21	6.26	3.19	1.82	23.61	****
iShares 10-20yr Trsfy	TLH	B	3.48	-3.37	-5.23	1.60	1.62	1.87	113.61	***
iShares 1-3yr Trsfy	SHY	B	0.71	-0.10	-0.43	0.05	0.45	0.22	84.13	***
iShares 20+ yr Trsfy	TLT	B	1.91	-6.56	-6.50	2.93	1.91	3.07	93.89	***
iShares 3-7yr Trsfy	IEI	B	3.40	-0.51	-2.48	0.39	1.41	0.95	115.79	***
iShares 7-10yr Trsfy	IEF	B	4.13	-1.89	-4.35	0.71	1.57	1.32	94.47	***
iShares Agg Bond	AGG	B	1.50	-1.29	-1.93	0.76	1.27	0.65	106.46	***
iShares High Yld	HYG	B	3.86	4.77	2.33	1.17	0.97	1.79	92.85	***
iShares Inter Gov	GVI	B	1.73	-0.79	-1.75	0.41	0.88	0.60	108.64	***
iShares Long Corp Bond	LQD	B	2.94	0.15	-1.68	1.83	2.10	1.23	110.47	***
PS 1-30 Ldr Trsfy	PLW	B	2.54	-3.53	-4.84	1.42	1.46	1.76	27.85	***
PS Bld America	BAB	B	0.65	-0.78	-1.27	3.93	2.57	1.44	25.84	***
PS DB G10 Currency	DBV	B	4.10	8.65	7.12	5.59	3.08	2.91	25.11	***
PS Emrg Mrkt Svrgn Debt	PCY	B	1.75	-1.18	-5.59	1.60	1.10	1.69	26.71	***
PS Fdmntl Hi Yield Corp	PHB	B	2.98	3.27	0.86	1.19	0.76	1.56	18.66	***
PS Insr Natl Muni	PZA	B	-4.81	-5.29	-6.30	1.88	2.38	1.34	22.76	***
PS Prfd	PGX	B	4.41	2.63	0.91	2.48	0.63	1.33	14.44	***
Vngrd Intrmtdt Bond	BND	B	1.45	-1.09	-2.10	0.77	1.17	0.67	80.96	***
Vngrd ShrtTrm Bond	BSV	B	0.72	-0.80	-1.46	0.04	0.77	0.45	80.78	***
Wtree Dryfs Brazil Real	BZF	B	6.37	5.21	0.42	8.81	4.75	2.73	28.90	***
Wtree Dryfs Indn Rupee	ICN	B	3.62	8.29	2.46	5.30	1.38	1.95	27.42	***
Wtree Dryfs Jpn Yen	JYF	B	15.52	6.01	-0.80	1.29	2.56	2.20	32.08	***
Wtree Dryfs N Zlnd Dollar	BNZ	B	7.54	7.73	1.41	5.30	5.93	3.08	24.71	***
Wtree Dryfs S Africa Rand	SZR	B	4.58	2.08	-3.66	10.52	3.68	3.06	29.95	***
iShares Inter Bond	MBB	B	-0.98	-3.41	-3.13	0.57	0.91	0.65	106.29	**
PS DB Dollar Bullish	UUP	B	-12.56	-11.75	-6.35	-6.31	-3.85	2.64	20.95	**
PS Insr CA Muni	PWZ	B	-5.74	-6.05	-7.06	2.46	1.90	1.42	22.51	**
PS Insr NY Muni	PZT	B	-4.92	-5.74	-6.74	1.83	1.28	1.21	22.24	**
PS Low Duration	PLK	B	-0.62	-1.29	-1.41	-0.51	-0.24	0.24	25.17	**
Wtree Dryfs Comdty Cur	CCX	B	NA	NA	10.34	8.34	4.54	0.00	28.07	**
Wtree Emrg Mrkt Lcl Debt	ELD	B	NA	NA	1.85	7.01	4.12	0.00	54.05	**
PS VRDO Tax Free Wkly	PVI	B	0.00	0.00	0.00	0.00	0.00	0.01	24.99	*

ETF data on pages 3, 7, 8, and 9 are for the periods shown (12months, 9, 6, 3, and 1) through the previous month's close. Generally, we want to own the top ranked ETFs (shown in green) and avoid or short the lower ranked ETFs (shown in red).

This is the ETF Income Database and Ranking. It shows performance over the last 12, 9, 6, 3, and 1 months through the previous month's end. V is Volatility. NAV is price. CS is Comet Strength (not shown). C is Comet (not shown), which is an ETF's risk-adjusted performance; the higher the better. V, CS, and C are proprietary tools. Rank column shows the number of comets.

# SLM Bond Timing Model



The SLM Bond Timing Model is based on the expected direction of the Corporate Bond market. The green bars are bullish (expect higher prices and lower yields) and the red bars are bearish (expect lower prices and higher yields). White spaces indicate that the previous signal is still in effect.

## WEEKLY REVIEW

5/9/11 Quite the corporate bond market rally. The Treasuries are doing okay.

5/2/11 Continuing the track higher in prices, lower in yields.

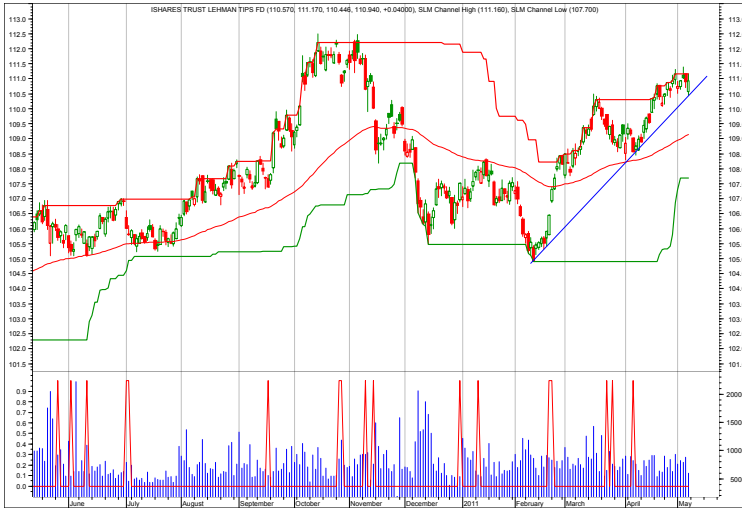
4/25/11 Bonds remain bullish for now.

4/18/11 After falling below its support, the bond market has turned and rallied.

4/11/11 Support didn't hold as expected. Three of the four Income Portfolio positions were stopped out. At this time, it is best to stand aside and see what the market does. If inflation is returning, then bonds will continue to fall in price. Yields will have to rise to compensate investors for the decline in purchasing power.

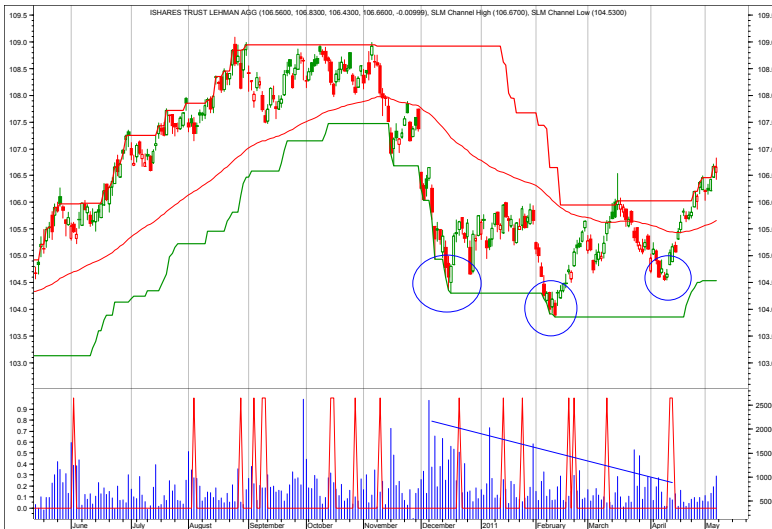
4/4/11 We've pulled back to major support, which sets up a series of higher highs and higher lows. This is bullish and suggests still higher prices (and lower yields) ahead.

# Income Charts



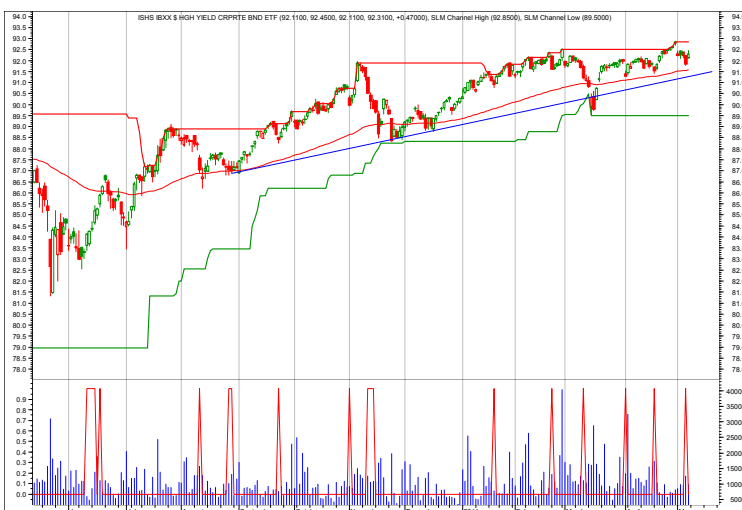
## TIP—Inflation Protected

5/9/11 Still bullish.  
 5/2/11 Higher highs.  
 4/25/11 Bull market continues.  
 4/18/11 Continue to hold for projected target.  
 4/11/11 Mild pullback.  
 4/4/11 Continue to hold.  
 3/28/11 In the expected pullback.  
 3/21/11 Hold  
 3/11/11 Rally on inflation fears.



## AGG—Aggregate Bond Market

5/9/11 Nice inverted head and shoulders pattern with correct volume tendencies. Breakout, however, should see some increasing volume.  
 5/2/11 Established channel up.  
 4/25/11 Volume dried up on the recent sell off last week, suggesting a bottom.  
 4/18/11 Buy.



## HYG—High Yield

5/9/11 Will look to reenter on pullbacks to uptrend line.  
 5/2/11 New recovery high.  
 4/25/11 No change.  
 4/18/11 Standing aside.  
 4/11/11 Potential entry points are now identified along the most recent uptrend line.  
 4/4/11 Continue to avoid.  
 3/28/11 No change.  
 3/21/11 Still avoid.

Each chart shows daily prices (top portion), volume (bottom portion), a moving average (smoothed red line on price portion, a relative strength indicator between the ETF and AGG (Aggregated bond ETF) (orange line), and red spikes. The spikes show potential places to buy and sell short. If the moving average is trending down, the spike shows a potential sell shorts. If the moving average is trending up, the spike shows potential buys. The charts do not show selling or covering signals.

# Growth Portfolio

ACTION FOR			PORTFOLIO DETAILS			Value as of date: 5/6/2011							
Action Date	Action	Symbol	Action Price	# of Shares	Action Value	Symbol	Closing Stop as of 5/9	Description	Start Price	Ending Price	# of Shares	Current Value	Percent of Total
						<b>LONG ETFs-</b>							
21-Mar	buy	DBA	33.90	400	13,570								
21-Mar	buy	XLE	77.68	140	10,885								
21-Mar	buy	ICF	69.23	200	13,856								
21-Mar	buy	IWM	81.30	400	32,530	DBA	31.00	agricltr			400	-	0.0%
21-Mar	short	FXI	42.75	(100)	(4,265)	IWM	81.00	small cap			400	-	0.0%
24-Mar	cover	EWP	43.01	100	4,311								
30-Mar	cover	FXI	44.40	100	4,450								
12-Apr	sell	XLE	75.73	140	10,592								
						<b>SHORT ETFs-</b>							
25-Apr	sell	IWM	84.34	100	8,424								
26-Apr	sell	SLV	44.03	200	8,796								
28-Apr	sell	DBA	33.70	400	13,470								
3-May	sell	IWM	84.30	300	25,280								
4-May	sell	ICF	73.47	200	14,684								
9-May	buy	IWM		400		<b>Cash from short</b>			1.00			-	0.0%
9-May	buy	DBA		400		<b>Money Market</b>			1.00	113,452	113,452.00	100.0%	100.0%
											<b>Total Valuation=</b>	113,452.00	100.0%

## WEEKLY REVIEW

5/9/11 The last two positions were stopped out. But I will reenter the small cap position (IWM) as noted. SLV has taken a nose dive to around \$34.70. See page 11.

5/2/11 A couple positions were stopped out. I'll let things settle down and then look to take further action.

4/25/11 Given the negative divergences in the various market indexes and given that the Russell 2000 (IWM) was the leader, I'll take profits now.

4/18/11 We were stopped out of XLE last week. Sold back to cash.

4/11/11 Please note that I've raised the stop prices as of 4/8 (last Friday)

4/4/11 The two shorts were stopped out at small losses. The long positions continue to climb.

3/28/11 No changes.

Annual Performance	2010	2011
ETF Growth Portfolio	8.1	
Wilshire 5000	15.5	

# Top ETF Growth Ranking to 3/31/11

<i>Fund Name</i>	<i>Symbol</i>	<i>Style</i>	<i>12m</i>	<i>9m</i>	<i>6m</i>	<i>3m</i>	<i>1m</i>	<i>V</i>	<i>NAV</i>	<i>Rank</i>
PS Dynmc Energy	PXI	EA	49.73	55.44	40.68	13.35	1.82	5.84	44.75	*****
PS Dynmc Energy Explor	PXE	EA	49.86	56.65	43.88	11.93	0.07	6.11	27.68	*****
PS Dynmc Healthcare	PTH	EA	22.69	36.00	24.72	15.83	6.17	4.10	31.47	*****
PS Dynmc Pharma	PJP	EA	33.88	36.28	16.36	13.38	7.52	3.99	26.18	*****
PS NASDAQ Intrnt	PNQI	EA	47.47	53.83	19.73	15.19	5.52	5.34	41.41	*****
iShares Gold	IAU	EG	32.30	32.09	14.98	17.37	8.92	4.11	15.27	*****
iShares Silver	SLV	EG	156.74	166.67	93.96	71.14	27.50	9.72	46.88	*****
PS DB Precious Metals	DBP	EG	52.43	53.95	29.32	28.54	13.62	5.25	61.75	*****
PS DB Silver	DBS	EG	154.88	165.46	93.20	71.73	27.57	9.78	84.39	*****
SPDR Gold	GLD	EG	32.08	31.93	14.89	17.33	8.94	4.11	152.37	*****
PS DB Agriculture	DBA	EA	36.79	31.10	14.68	-0.67	-0.50	4.06	34.06	****
PS DB Commodity	DBC	EA	30.52	39.36	26.69	11.81	4.56	4.53	31.90	****
PS DB Energy	DBE	EA	22.80	38.45	38.17	18.28	6.36	5.50	33.45	****
PS DB Oil	DBO	EA	15.88	36.83	35.12	17.72	6.08	5.62	34.22	****
PS Dynmc Basic Matrl	PYZ	EA	29.96	39.11	22.72	12.27	4.25	6.05	40.73	****
PS Dynmc Food & Bev	PBJ	EA	23.32	26.15	14.67	12.58	3.13	3.81	19.78	****
PS Dynmc Networking	PXQ	EA	38.30	43.54	22.37	10.90	4.05	6.35	29.21	****
PS Dynmc Oil & Gas Srvcs	PXJ	EA	46.67	60.49	44.18	13.65	0.08	7.43	26.40	****
PS Dynmc Utilities	PUI	EA	14.44	15.44	10.19	7.86	4.25	2.65	17.10	****
Select SPDR Enrgy	XLE	EA	34.33	49.48	35.85	10.02	0.91	5.84	80.48	****
Select SPDR Health	XLV	EA	14.12	23.35	13.06	11.24	6.43	3.17	35.24	****
Vngrd Consmr Stpls	VDC	EA	15.22	17.14	9.21	10.19	5.27	3.14	79.57	****
Vngrd Health	VHT	EA	15.85	25.94	14.95	12.68	6.41	3.30	63.89	****
Wtree Intrntl Energy	DKA	EA	28.80	42.37	23.28	12.57	4.74	6.24	31.35	****
PS DB Gold	DGL	EG	30.46	30.86	14.12	17.09	8.72	4.10	54.87	****
PS Buyback Achievers	PKW	EGI	21.43	31.03	18.08	8.67	4.40	4.19	27.26	****
PS Dividend Achievers	PFM	EGI	15.57	20.97	12.97	7.75	3.66	3.29	15.29	****
Wtree Eqty Income	DHS	EGI	17.94	20.22	10.64	8.70	4.05	3.13	42.21	****
Guggnhm Ocn Grth	OTR	ELC	20.03	28.39	12.66	8.81	4.73	3.93	30.62	****
Guggnhm RJ All	RYJ	ELC	26.76	36.94	26.01	9.42	2.83	5.60	23.59	****
PS Mega Cap	PMA	ELC	16.30	25.92	18.44	7.27	4.26	4.02	27.88	****
PS QQQ	QQQQ	ELC	29.06	26.69	32.92	10.91	3.16	5.47	57.77	****
SPDR NASDAQ 100	QQQQ	ELC	29.06	26.69	32.92	10.91	3.16	5.47	57.77	****
Wtree Div Ex Fincl	DTN	ELC	19.19	22.88	13.09	7.27	3.59	3.59	51.93	****
Wtree LrgCap Grth	ROI	ELC	16.08	25.12	14.86	7.29	2.87	3.68	40.20	****
Guggnhm MidCap Core	CZA	EMC	24.24	29.16	18.24	9.31	3.16	4.21	32.29	****
Wtree MidCap Earn	EZM	EMC	23.64	33.00	22.44	10.09	3.17	4.98	60.58	****
PS Dynmc Sml Cap Grth	PWT	ESC	34.73	43.49	30.65	17.13	3.43	5.87	19.01	****
Vngrd Small Cap Grth	VBK	ESC	30.10	41.68	27.54	13.23	3.31	5.95	89.16	****
Guggnhm Dfnsv Eqty	DEF	EV	19.96	21.88	11.67	8.12	2.81	2.69	26.74	****
PS FTSE RAFI Asia Pac xJpn	PAF	EW	27.14	34.59	17.53	8.92	5.14	5.07	61.12	****

This page shows the top ranked ETF Growth Database. It shows performance over the last 12, 9, 6, 3, and 1 months through the previous month's end. V is Volatility. NAV is price. CS is Comet Strength (not shown). C is Comet, which is an ETF's risk-adjusted performance; the higher the better (not shown). This gives us the Rank column (shown).

Generally speaking, we want to own the top-ranked ETFs with 5 and 4 comets. (Comets, not stars, because unlike stars that are fixed, comets come into and out of prominence. We want our thinking, our metaphor aligning with reality.

# Middle ETF Growth Ranking

<i>Fund Name</i>	<i>Symbol</i>	<i>Style</i>	<i>12m</i>	<i>9m</i>	<i>6m</i>	<i>3m</i>	<i>1m</i>	<i>V</i>	<i>NAV</i>	<i>Rank</i>
Guggnhm Timber	CUT	EA	19.31	25.40	14.46	5.66	0.52	5.45	23.35	***
PS Aerospace & Def	PPA	EA	7.71	19.21	13.98	3.44	0.93	4.90	20.54	***
PS Cleantech	PZD	EA	21.17	28.64	21.37	10.48	1.95	5.64	30.05	***
PS Dynmc Biotech	PBE	EA	17.72	26.60	15.96	9.29	6.43	5.02	23.18	***
PS Dynmc Consmr Discr	PEZ	EA	16.09	29.82	17.23	10.51	5.15	6.08	27.56	***
PS Dynmc Consmr Staples	PSL	EA	16.99	19.94	13.36	12.26	4.98	3.85	31.40	***
PS Dynmc Fncl	PFN	EA	10.57	17.76	15.67	6.40	1.78	3.95	20.43	***
PS Dynmc Indstrls	PRN	EA	28.20	35.93	23.66	8.49	0.65	5.95	32.46	***
PS Dynmc Leisure & Enter	PEJ	EA	17.01	31.04	11.26	5.22	1.15	5.61	19.36	***
PS Dynmc Media	PBS	EA	14.01	28.88	19.88	12.70	2.90	6.22	15.62	***
PS Dynmc Retail	PMR	EA	17.35	32.89	23.06	16.36	7.53	6.17	21.98	***
PS Dynmc Semicndctr	PSI	EA	27.31	40.60	25.47	7.07	3.53	6.98	18.18	***
PS Dynmc Software	PSJ	EA	21.69	28.58	15.41	8.91	0.80	4.46	27.48	***
PS Dynmc Technology	PTF	EA	16.61	27.67	15.42	5.41	0.84	5.31	27.69	***
PS Gbl Agriculture	PAGG	EA	32.05	37.96	9.20	2.82	1.76	5.90	33.58	***
PS Gbl Coal	PKOL	EA	27.92	37.74	15.89	1.84	-0.01	5.49	37.47	***
PS Water Resources	PHO	EA	12.02	25.50	16.47	5.42	-0.54	5.40	20.23	***
PS WilderHill PrgsV Enrgy	PUW	EA	21.17	28.15	20.76	7.03	0.53	5.48	30.62	***
Select SPDR Cnsmr Disc	XLY	EA	16.46	28.98	15.00	9.06	3.84	5.45	40.55	***
Select SPDR Cnsmr Stpl	XLP	EA	14.08	16.83	9.56	9.14	5.35	3.13	31.52	***
Select SPDR Indl	XLI	EA	18.82	27.76	20.26	6.79	2.75	5.63	38.70	***
Select SPDR MatrIs	XLB	EA	20.24	27.68	17.44	6.32	2.12	4.92	40.87	***
Select SPDR Technlgy	XLK	EA	14.33	21.99	9.82	2.89	2.60	4.75	26.74	***
Select SPDR Utilities	XLU	EA	8.94	9.19	4.54	4.54	4.05	2.47	33.16	***
Vngrd Consmr Dis	VCR	EA	18.04	30.89	15.98	9.67	4.02	5.73	65.68	***
Vngrd Tech	VGT	EA	15.27	24.84	11.88	3.52	3.05	5.22	66.19	***
Wtree Intrntl Basic Mtrl	DBN	EA	30.55	38.81	22.68	14.39	7.97	6.67	36.02	***
PS Gbl Gold Precious Mtls	PSAU	EG	23.29	28.91	9.26	15.65	3.76	5.32	50.90	***
iShares DJ Slct Div	DVY	EGI	13.02	17.88	11.61	7.36	2.93	3.56	53.66	***
PS Fincl Pfd	PGF	EGI	8.10	5.84	1.11	3.22	0.83	2.14	18.29	***
PS Hi Yld Eqty Div	PEY	EGI	7.34	11.43	6.88	4.98	2.02	3.52	9.07	***
PS RvrFrnt Tac Bal	PAO	EGI	14.01	19.84	11.94	7.43	2.89	3.19	13.59	***
PS RvrFrnt Tac G&I	PCA	EGI	9.40	13.50	7.94	5.83	2.56	2.39	13.62	***
Guggnhm Ocn Tomo	OTP	ELC	17.41	27.79	16.24	7.43	3.91	4.60	28.33	***
Guggnhm Sctr Rotn	XRO	ELC	19.32	30.32	17.83	10.65	3.20	4.96	27.42	***
iShares Slct Div	IDV	ELC	22.91	28.28	15.16	10.07	6.56	5.34	38.15	***
PS Actv Alph MultiCap	PQZ	ELC	12.08	27.11	14.44	4.30	-0.55	4.33	20.66	***
PS AlphQ	PQY	ELC	21.80	30.37	12.83	6.03	3.97	4.60	30.78	***
PS DWA Dvlpd Mrkt T Ldrs	PIZ	ELC	24.66	32.28	13.54	9.27	6.53	5.20	23.81	***
PS DWA Tech Ldr	PDP	ELC	24.96	33.85	20.10	9.63	3.47	5.38	26.53	***
PS Dyn MagniQuant	PIQ	ELC	17.04	30.77	19.91	9.21	2.92	5.41	26.96	***
PS Dyn Mrkt	PWC	ELC	19.44	29.27	17.01	7.37	2.73	4.33	48.23	***
PS Dynmc Lrg Cap	PJF	ELC	13.49	22.61	13.98	7.66	3.73	4.18	26.41	***
PS Dynmc Lrg Cap Grth	PWB	ELC	18.27	28.28	15.22	7.76	3.46	4.45	17.64	***
PS Dynmc Lrg Cap Value	PWV	ELC	12.74	21.26	13.81	7.10	3.61	4.01	20.36	***
PS FTSE RAFI US 1000	PRF	ELC	14.58	24.36	16.64	6.00	2.72	4.61	60.76	***
PS Ibtsn Altrntv	PTO	ELC	5.97	14.34	6.23	5.05	2.01	3.07	12.28	***
PS Mrngstr Stk	PYH	ELC	8.30	23.60	16.17	5.40	3.90	4.30	22.05	***
PS S&P 500 High Qlty	PIV	ELC	19.85	24.44	14.69	8.32	3.79	4.08	14.63	***
SPDR DJ Industrials	DIA	ELC	16.29	22.29	15.03	7.96	4.08	3.96	128.04	***
SPDR S&P 500	SPY	ELC	14.83	23.72	15.14	6.02	2.90	4.18	136.43	***
Vngrd Extnd 4500	VXF	ELC	23.11	33.72	22.34	9.79	2.73	5.41	60.67	***
Vngrd Grth	VUG	ELC	17.56	26.80	14.65	5.95	3.09	4.46	66.29	***
Vngrd Large Cap	VV	ELC	15.54	24.66	15.61	6.19	2.99	4.27	62.59	***
Vngrd Materials	VAW	ELC	25.31	33.33	18.45	8.28	2.58	5.21	89.61	***
Vngrd TTL Stock	VTI	ELC	16.11	25.69	16.44	6.70	2.90	4.40	70.70	***
Vngrd Utilities	VPU	ELC	10.73	11.60	6.58	5.44	3.88	2.48	71.75	***
Wtree LrgCap Div	DLN	ELC	16.32	22.39	13.92	7.64	3.85	3.62	50.18	***
Wtree S&P 500	EPS	ELC	14.65	23.06	13.90	6.15	2.89	3.72	47.02	***

This shows the ETF Growth Database and Ranking. It shows performance over the last 12, 9, 6, 3, and 1 months through the previous month's end. V is Volatility. NAV is price. Rank shows the number of comets from 5 to 1. The larger the better.



# Middle ETF Growth Ranking

Wtree Ttl Div	DTD	ELC	15.68	22.16	13.86	7.36	3.24	3.68	50.61	***
Wtree Ttl Earn	EXT	ELC	14.24	24.57	14.75	6.74	3.08	3.91	48.66	***
Guggnhm Insdr Sent	NFO	EMC	22.99	31.99	20.80	9.47	4.22	5.21	36.06	***
Guggnhm Spin Off	CSD	EMC	16.49	26.56	15.80	11.30	2.99	4.50	25.01	***
PS Dynmc Mid Cap	PJG	EMC	17.77	25.79	16.54	8.33	3.26	4.57	27.16	***
PS Dynmc Mid Cap Grth	PWJ	EMC	26.26	37.08	22.79	11.30	4.41	5.76	24.14	***
PS Dynmc Mid Cap Value	PWP	EMC	10.74	20.18	13.09	6.13	2.12	3.97	17.07	***
PS FTSE RAFI US 1500 Sml-Mid	PRFZ	EMC	18.24	31.96	22.63	9.48	2.10	5.97	70.65	***
Vngrd MidCap Val	VO	EMC	22.60	31.87	19.86	8.76	2.71	4.94	82.73	***
Wtree MidCap Div	DON	EMC	16.75	23.75	16.09	8.31	3.75	4.35	56.06	***
iShares Cohen&Str REIT	ICF	ERE	21.09	22.69	15.16	8.47	5.95	5.03	74.30	***
iShares REIT	IYR	ERE	17.39	20.37	13.12	7.26	4.66	4.65	62.17	***
PS US REIT	PSR	ERE	20.86	23.05	14.08	9.03	5.19	4.77	51.95	***
SPDR Wish REIT	RWR	ERE	19.15	22.08	14.35	8.53	5.96	4.99	68.45	***
Wtree Intrntl REIT	DRW	ERE	15.25	17.02	2.10	5.50	4.91	4.14	30.41	***
iShares Russel 2000	IWM	ESC	20.57	32.87	22.89	10.83	2.64	5.70	86.39	***
PS Dyn OTC	PWO	ESC	15.66	28.58	16.22	9.28	4.41	5.35	53.76	***
PS Dynmc Sml Cap	PJM	ESC	20.12	33.75	24.85	12.73	4.14	5.76	25.37	***
PS Dynmc Sml Cap Value	PWY	ESC	16.75	28.51	22.10	12.83	4.16	5.65	17.09	***
Vngrd Small Cap	VB	ESC	22.25	34.02	23.14	11.17	2.94	5.70	81.31	***
Vngrd Small Cap Value	VBR	ESC	14.68	26.24	18.22	8.71	2.34	5.38	73.12	***
Wtree Sml Cap Div	DES	ESC	9.69	18.28	12.43	5.78	1.82	4.77	49.56	***
Guggnhm Multi Ast In	CVY	EV	15.32	18.11	10.90	7.12	3.44	3.26	21.98	***
iShares Russel MidVal	IWS	EV	17.00	26.33	17.53	7.06	2.30	4.70	49.27	***
Guggnhm BRIC	EEB	EW	13.37	16.34	5.12	6.93	1.22	4.47	48.00	***
Guggnhm Euro-Pac	EEN	EW	14.98	26.09	11.18	7.14	4.94	4.71	21.52	***
Guggnhm Gbl Div	LVL	EW	14.73	20.30	9.65	9.39	6.07	4.97	16.59	***
Guggnhm Gbl Wtr	CGW	EW	21.05	23.46	14.44	9.20	5.29	4.24	22.31	***
Guggnhm Intrntl A Incm	HGI	EW	13.82	18.61	6.52	4.98	4.50	4.10	20.43	***
Guggnhm Intrntl SmlCap	XGC	EW	19.13	25.59	6.05	5.52	5.04	4.41	25.42	***
iShares Canada	EWC	EW	19.38	26.41	16.52	7.70	0.27	4.21	33.70	***
iShares EAFE Indx	EFA	EW	16.63	22.25	11.31	6.76	5.63	5.29	63.46	***
iShares Emrg Mrkt Stk	EEM	EW	18.91	20.77	8.41	9.15	2.73	4.84	50.00	***
iShares Europe 350	IEV	EW	23.11	27.07	14.44	10.56	8.42	6.29	45.34	***
iShares Mexico	EWX	EW	21.36	26.20	11.80	5.84	2.32	4.79	64.31	***
PS BLDR Dvlpd Mrkt 100 ADR	ARRD	EW	15.14	20.61	11.25	6.07	5.50	5.59	23.58	***
PS BLDR Europe 100 ADR	ADRU	EW	17.15	22.40	12.14	8.23	5.94	5.62	23.55	***
PS DWA Emrg Mrkt T Ldrs	PIE	EW	25.10	25.02	7.66	12.28	5.15	5.31	19.39	***
PS Dyn Dvlp Intrnl Opp	PFA	EW	19.63	27.69	15.03	6.17	5.82	5.57	19.58	***
PS Emrg Mrkt Infrastrctr	PXR	EW	26.75	31.20	12.75	8.77	4.69	5.73	56.43	***
PS FTSE RAFI Dvlp Mrkt xUSA	PXF	EW	18.52	22.51	11.02	6.70	6.39	5.65	43.81	***
PS FTSE RAFI Dvlp Mrkt xUSA Sml	PDN	EW	18.20	24.93	12.01	5.49	4.14	4.65	26.10	***
PS FTSE RAFI Emrg Mrkt	PXH	EW	19.09	19.51	8.15	6.91	2.97	4.21	27.07	***
PS Gbl Listd Prvt Eqty	PSP	EW	21.73	33.95	16.19	11.95	5.87	5.99	12.27	***
PS Gbl Water	PIO	EW	16.45	22.10	14.33	7.98	4.65	4.63	21.38	***
PS Gldn Drgn USX China	PGJ	EW	15.41	19.07	4.18	5.78	3.88	4.34	28.91	***
PS Intrntl Dvnd	PID	EW	18.22	20.84	10.99	7.87	4.27	3.95	16.88	***
SPDR DJ Gbl Titans	DGT	EW	12.90	21.38	12.85	5.71	4.06	4.44	63.52	***
SPDR Euro Stoxx 50	FEZ	EW	20.10	25.09	12.96	10.21	8.16	7.57	44.03	***
Vngrd Emrg Mrkt	VVO	EW	20.30	20.85	7.96	8.84	3.37	4.55	50.60	***
Wtree DEFA	DWM	EW	17.44	23.15	11.49	7.57	6.36	5.43	52.87	***
Wtree DEFA Eqty Incm	DTH	EW	16.54	23.80	11.41	9.71	7.38	6.17	47.34	***
Wtree Emrg Mrkt Eincl	DEM	EW	23.07	25.46	12.54	12.44	5.73	4.86	64.61	***
Wtree Emrg Mrkt SC Div	DGS	EW	24.82	25.77	7.74	8.88	5.68	5.18	56.52	***
Wtree Eur SC Div	DFE	EW	27.55	34.51	15.66	10.66	7.91	6.10	48.13	***
Wtree Gbl Eqty Incm	DEW	EW	18.22	23.97	11.88	9.88	5.91	4.77	47.77	***
Wtree Intrntl Div Ex Fincl	DOO	EW	20.26	23.86	10.71	9.74	6.91	5.62	50.25	***
Wtree Intrntl LC Div	DOL	EW	16.29	21.79	10.28	8.10	6.88	5.59	50.97	***
Wtree Intrntl MC Div	DIM	EW	18.21	23.49	10.63	7.19	5.47	5.30	56.73	***
Wtree Intrntl SC Div	DLS	EW	16.71	25.45	12.51	6.73	4.92	4.84	55.66	***
Wtree Pcf Ex Jpn Eq In	DNH	EW	14.94	25.97	13.24	10.46	6.57	5.39	65.87	***
Wtree Pcf Ex Jpn Ttl Div	DND	EW	17.05	21.86	11.38	8.48	4.87	4.39	71.52	***
Wtree World Ex US Grth	DNL	EW	19.66	25.45	10.32	11.15	6.88	4.77	59.21	***
Guggnhm Candn Enrg Incm	ENY	EWR	23.25	39.89	29.69	8.35	1.05	6.37	23.11	***
Guggnhm China All	YAO	EWR	18.40	15.65	2.23	7.75	2.59	4.08	29.34	***

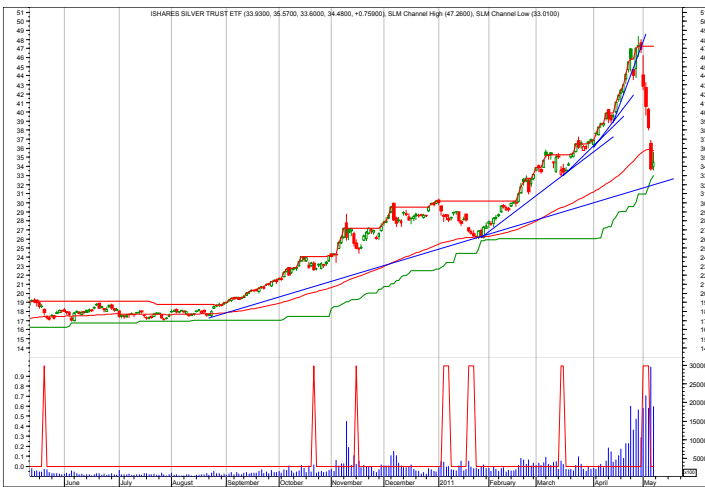
This shows the ETF Growth Database and Ranking. It shows performance over the last 12, 9, 6, 3, and 1 months through the previous month's end. V is Volatility. NAV is price. Rank shows the number of comets from 5 to 1. The larger the better.

# Bottom ETF Growth Ranking

<i>Fund Name</i>	<i>Symbol</i>	<i>Style</i>	<i>12m</i>	<i>9m</i>	<i>6m</i>	<i>3m</i>	<i>1m</i>	<i>V</i>	<i>NAV</i>	<i>Rank</i>
Guggnhm Airline	FAA	EA	4.81	1.90	-13.50	-5.11	0.08	5.91	36.38	**
Guggnhm Solar	TAN	EA	4.27	15.49	4.64	10.55	0.00	8.99	8.80	**
PS Dynmc Banking	PJB	EA	-8.29	3.85	9.70	-1.45	-0.46	4.18	12.94	**
PS Dynmc Bldg Cnstrctn	PKB	EA	0.72	17.88	16.64	4.07	-2.02	5.76	14.08	**
PS Gibl Steel	PSTL	EA	6.31	19.28	12.61	1.30	-1.25	6.04	23.75	**
PS Lux Nanotech	PXN	EA	-6.55	8.70	3.56	-2.40	0.71	5.34	9.67	**
PS WilderHill Cln Enrgy	PBW	EA	1.78	12.34	2.90	-1.34	-4.46	5.52	10.29	**
Select SPDR Financils	XLF	EA	1.37	11.35	12.51	-0.12	-0.06	4.64	16.38	**
Vngrd Fincl Srv	VFH	EA	2.79	13.08	13.04	1.36	0.69	4.78	34.13	**
Wtree Intrntl Utilities	DBU	EA	10.05	15.95	6.32	6.32	5.67	5.71	22.55	**
Wtree Japan Hedge Eqty	DXJ	EC	-12.02	1.38	5.51	-4.74	-0.33	3.95	36.75	**
PS DB Base Metals	DBB	EG	12.36	19.79	5.89	-1.67	-1.35	5.90	24.09	**
iShares Prfrd	PFF	EGI	3.97	1.80	1.14	2.51	1.03	1.66	40.06	**
PS S&P 500 BuyWrite	PBP	ELC	-0.42	4.37	0.33	2.09	1.56	2.35	21.46	**
PS Zacks Micro Cap	PZI	ESC	6.75	27.71	19.07	5.67	0.05	6.91	12.49	**
Guggnhm Frntr	FRN	EW	15.83	13.59	-3.10	4.75	4.94	4.30	23.15	**
iShares China	FXI	EW	10.70	9.63	0.53	6.25	0.67	3.54	45.21	**
iShares Latin Amr	ILF	EW	13.16	16.22	3.93	5.45	0.71	5.02	54.17	**
iShares Spain	EWP	EW	15.60	16.04	6.66	9.39	7.97	8.85	45.80	**
PS BLDR Asia 50 ADR	ADRA	EW	9.47	16.28	8.27	1.23	1.99	4.28	28.64	**
PS BLDR Emrg Mkt 50 ADR	ADRE	EW	10.74	14.47	5.84	5.11	0.45	4.36	48.74	**
PS Gibl Clean Enrgy	PBD	EW	6.23	16.38	11.26	9.07	-1.34	5.85	15.51	**
PS Gibl Nuclr Enrgy	PKN	EW	5.24	12.00	3.80	-5.15	4.06	4.91	20.56	**
PS Gibl Wind Energy	PWND	EW	-10.45	1.71	10.81	11.92	-2.73	6.71	11.28	**
PS India	PIN	EW	6.39	6.53	-5.74	7.39	-0.04	5.38	23.97	**
PS MENA Frntr Countries	PMNA	EW	-7.04	1.28	-7.72	-2.84	0.56	3.76	12.67	**
Wtree Middle East Div	GULF	EW	4.83	16.60	4.06	1.28	2.12	4.71	17.03	**
Guggnhm China REIT	TAO	EWR	18.47	8.93	-1.58	-0.30	0.81	5.04	19.88	**
Guggnhm China Sml	HAO	EWR	12.72	13.02	-4.20	2.94	3.22	5.24	30.13	**
Wtree India	EPI	EWR	7.05	6.64	-8.42	7.47	0.40	5.67	24.90	**
Wtree Japan SC Div	DFJ	EWR	1.73	7.65	8.25	-3.02	-0.09	3.39	43.04	**
Guggnhm Shipping	SEA	EA	NA	-7.40	-6.47	-4.19	-3.28	0.00	26.04	*
PS S&P SmlCap Cnsmr Dis	PSCD	EA	9.31	24.70	17.92	9.94	3.88	NA	29.48	*
PS S&P SmlCap Cnsmr Stpl	PSCC	EA	19.78	20.59	16.33	12.80	2.63	NA	31.98	*
PS S&P SmlCap Energy	PSCE	EA	59.42	74.93	56.95	16.47	-1.17	NA	41.45	*
PS S&P SmlCap Fincl	PSCF	EA	8.52	20.50	15.40	6.50	2.81	NA	28.92	*
PS S&P SmlCap Hlth Care	PSCH	EA	34.87	46.09	34.18	21.57	7.93	NA	34.15	*
PS S&P SmlCap Indstrils	PSCI	EA	16.63	25.48	19.51	6.07	-0.13	NA	30.93	*
PS S&P SmlCap Info Tech	PSCT	EA	25.80	37.44	23.78	8.94	1.95	NA	32.67	*
PS S&P SmlCap Mtrls	PSCM	EA	14.13	29.89	16.17	7.14	0.40	NA	30.46	*
PS S&P SmlCap Utilities	PSCU	EA	14.09	16.42	7.95	5.42	3.65	NA	29.67	*

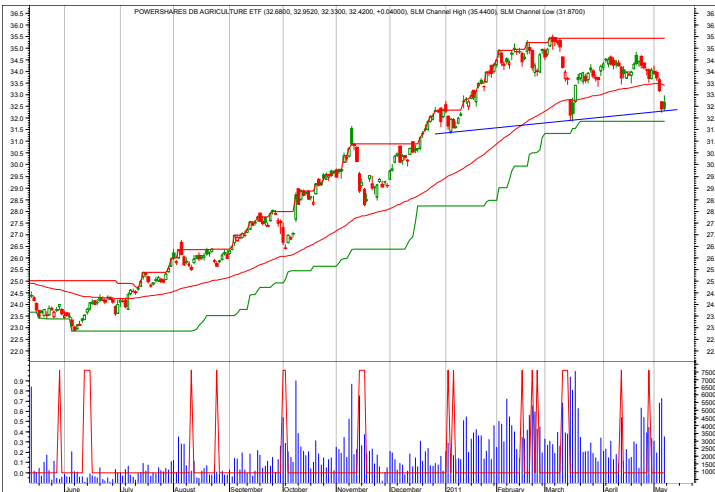
This shows the ETF Growth Database and Ranking. It shows performance over the last 12, 9, 6, 3, and 1 months through the previous month's end. V is Volatility. NAV is price. Rank shows the number of comets from 5 to 1. The larger the better.

# Growth Charts



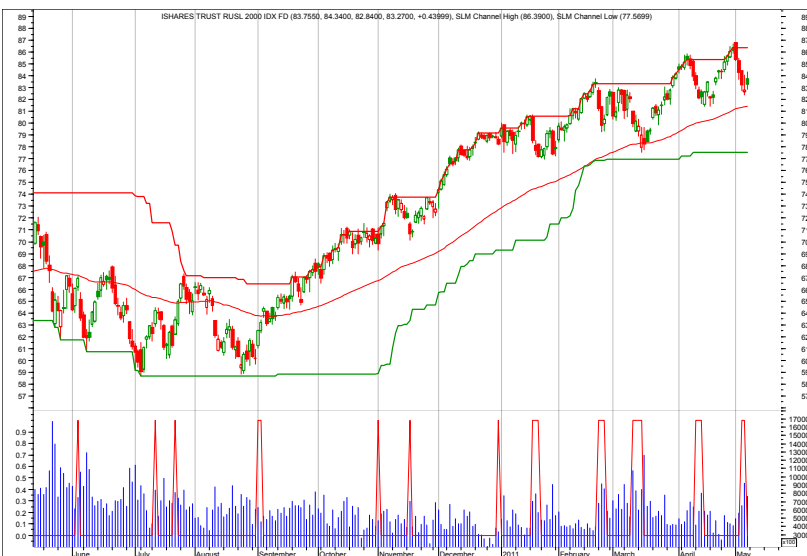
## SLV—Silver

5/9/11 That is a typical parabolic move ending, except it should really drop at least to the trend line, if not below.  
 5/2/11 Stopped out. But parabolic move may continue. Just have to see.  
 4/25/11 SLV is going parabolic (rate of change is accelerating), which is a terminal move. A pullback to \$30 would not be unreasonable. Raise the stop very close.  
 4/18/11 Raised the stop level again.  
 4/11/11 Stepping back to look at SLV, we see it is in a parabolic type rise. This will end.



## DBA—Agriculture

5/9/11 At support.  
 5/2/11 Consolidation.  
 4/25/11 No change.  
 4/18/11 No change.  
 4/11/11 Well defined up trend.



## IWM—Russell 2000

5/9/11 Reenter after being stopped out.  
 5/2/11 Still moving up.  
 4/25/11 Possible intermediate-term topping area circled on the chart.  
 4/18/11 No change.

Each chart shows daily prices (top portion), volume (bottom portion), a moving average (smoothed red line on price portion), a relative performance indicator between the ETF and S&P 500 (orange line), and red spikes. The spikes show potential buy and sell short signals. Generally speaking, if the moving average is trending down, the spike shows a potential sell short. If the moving average is trending up, but the ETF declines, the spike shows a potential buy. The charts do not show selling or covering signals.

## Overflow and Newsletter Updates

5/9/11 The monthly risk-adjusted performance rankings of the monitored ETFs is updated through 4/30/11.

5/2/11 No changes.

4/25/11 I plan to add additional ETFs to the database for ranking and sorting and performance. It is currently about 250.

I have completed a model structuring that combines ETF-specific timing with selecting. Back testing is now required. If long-term (10 years) results come in better, then I will let subscribers know of a potential change.

4/18/11 I updated the symbols for the Powershares Small Cap sector ETFs. These will show up next month.

No other changes.

# Descriptions & Disclosures

## **PORTFOLIO DESCRIPTIONS (pages 2 and 6)**

Our guiding goal is to provide the most return with the least risk consistently over time through bull and bear markets.

Income Portfolio, page2: Uses a proprietary selection methodology on all of the monitored bond-oriented ETFs to pick the top ETFs. I then use a proprietary timing model to decide whether to buy, sell, hold, or avoid.

Growth Portfolio, page 6: Uses the same methodologies as in the Income Portfolio, except as it is applied to stock-oriented ETFs.

All portfolios were started on 1/1/10 with \$100,000.

Portfolio changes will usually be made at the close on Monday, unless otherwise noted in any emailed hotline update or triggered stop orders. Issues are normally posted on Mondays by 1:30pm cst.

Portfolios are updated through the Friday close the week before.

Dividends are reinvested in additional shares. Commissions of \$10/trade and short-term redemption charges, if any, are applied.

Interest is zero for the money market (cash) position.

**SUBSCRIPTIONS:** To receive *ETF Selections & Timing*, you may subscribe in one of three ways. You may subscribe on the web site InvestmentST.com using PayPal or call 1-800-800-6563 for Visa or MasterCard orders or send a check to the address on the front page. Subscriptions may be tax deductible.

The recurring monthly subscription is \$24.00. An annual subscription is \$240.00. Subscribers receive this weekly eNewsletter. There is no mailed issue. Subscribers retrieve the current weekly issue at the web site InvestmentST.com by logging in using a log in name and password.

Unless otherwise noted, the weekly eNewsletter is posted by 1:30 PM central time each Monday, except for holidays and then on Tuesday. It may contain actionable, specific buy or sell advice to take that day at the Monday close in each portfolio. We may also use stop orders. Portfolio data will be updated through the previous Friday's close. Fund symbols, rather than names, are the official identification used for activity.

**GUARANTEE:** Subscriptions may be cancelled at any time. Annual subscriptions are refundable for the weekly term remaining with a four-week minimum charge, using a 52-week count. Monthly subscriptions just expire.

**PUBLISHER:** Watercourse Way Holdings, LLC publishes this newsletter.

**REPRINTS:** This eNewsletter is intended for subscribers only, reprints are not permitted.

**DISCLAIMER:** The information contained herein is assembled from sources who are believed reliable, but the accuracy of data or advice cannot be guaranteed. Past performance does not guarantee future performance. Portfolio values include a commission of \$5/trade, dividend reinvestment, and short-term redemption charges. The Wilshire 5000 and Aggregate Bond are equity and bond indexes and may or may not be useful in comparing returns. Security values fluctuate. Information is provided without consideration for your personal situation. Watercourse Way Holdings, LLC its members and associates may or may not invest identically to or at the same time as portfolios or advice shown herein.

**COPYRIGHT:** Copyright, 2009-11, Watercourse Way Holdings, LLC. All rights reserved.