

ETF Selections & Timing

Watercourse Way Holdings, LLC

P.O. Box 830396
Richardson, TX 75083-0396
972-680-2366

InvestmentST.com

March 4, 2013 (data through previous Friday close)

Volume 4
Issue 9

So Far

So far so good into the New Year. The stock market has not reacted in a negative way to either higher taxes or curtailed government spending. The Fiscal Cliff was a stepping stone and the Debt Mountain a mole hill. So far.

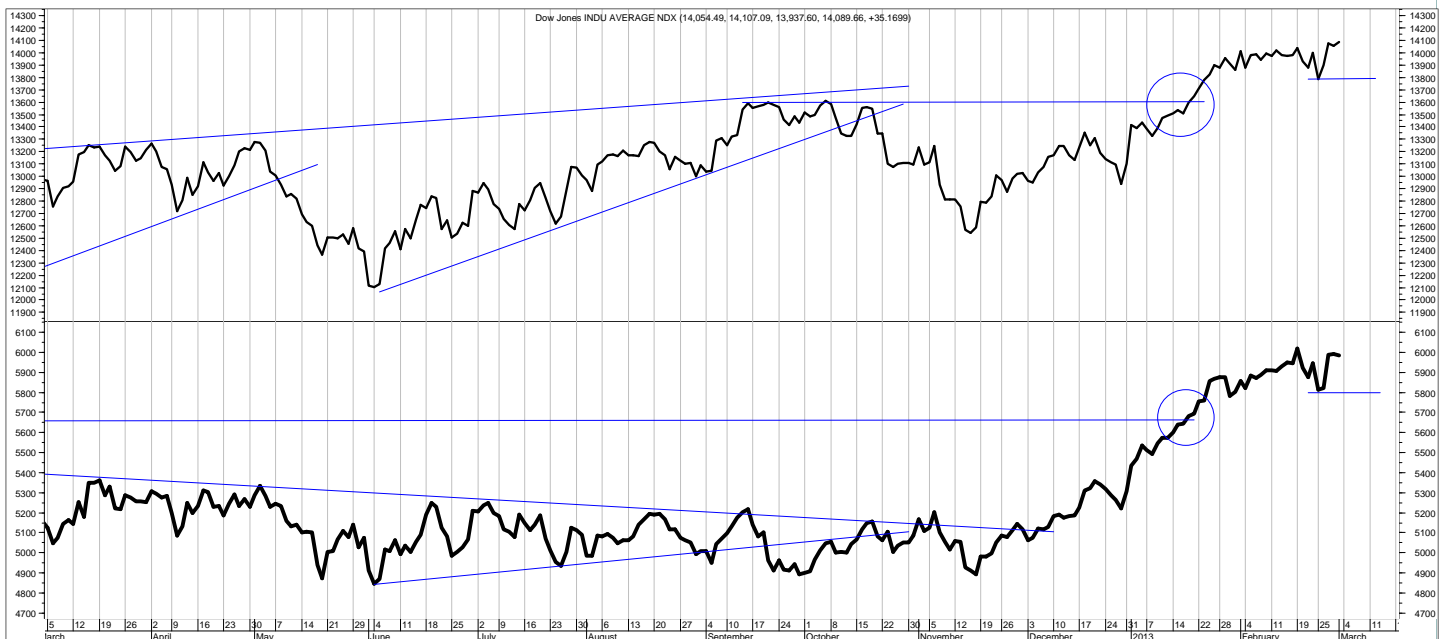
With that shrugging and

ignoring and rising stock prices has come an increasing bullishness amongst advisors and investors. This has become the new worry. Investor sentiment is a contrary indicator. Too much bullishness is actually bearish. Once "everyone" is in then who is left to buy the dips?

And the dips become full fledged corrections that go lower than expected. This is where this sentiment indicator is at.

Offsetting what might otherwise be bearish news (higher taxes and curtailed spending),

(Continued on bottom right on page 12 see REVIEW on top)



This is the daily chart of the Dow Industrials (top) and Transports (bottom).

SCOREBOARD (returns year to date and past weeks to date)

Model	YTD	52-week	26-week	13-week	4-week	1-week
ETF Income Portfolio	-0.3%	2.1%	0.8	-0.9	0.2	0.0%
ETF Growth Portfolio	6.2%	2.6%	6.1	5.9	-0.8	-0.1%
Aggrgt Bond (AGG)	-0.7%	0.1%	-1.6	-1.5	0.6	0.2%
S&P 500 TtlRtrn	8.6%	13.2%	9.1	7.8	0.6	0.1%
World Growth Index	6.7%	10.2%	9.2	7.3	-0.4	0.0%

CONTENTS

Pages 2-5	Income
Page 4	Bond Model
Pages 6-11	Growth
Page 12	Overflow
Page 13	Disclaimers

Income Portfolio

ACTION FOR			PORTFOLIO DETAILS			Value as of date: 3/1/2013								
Action Date	Action	Symbol	Action Price	# of Shares	Action Value	Symbol	Stop Loss as of 12/24	Description	Start Price	End Price	# of Shares	Current Value	Percent of Total	
21-Jan	sell	LQD	120.67	250	30,158									
reducing risk by selling 1/2 of LQD						CSJ	99.10	1-3 yr crdt	105.43	105.61	400.0	42,244.00	37.2%	
21-Jan	buy	BSV	81.01	370	29,984	BSV	76.15	shrt trm	81.01	81.01	372.1	30,144.79	26.6%	
29-Jan	sell	LQD	119.73	262	31,383	JNK	38.34	hi-yield	40.79	40.83	150	6,124.50	5.4%	
stopped out						PCY	28.57	intrntl bond	30.39	30.21	200	6,042.00	5.3%	
19-Feb	buy	JNK	40.79	150	6,129									
19-Feb	buy	PCY	30.39	200	6,088									
4-Mar	sell	CSJ		all										
4-Mar	buy	AGG		425										
						Money Market					1.00	28,926	28,926.00	25.5%
												Total Valuation=	113,481.29	100.0%

WEEKLY REVIEW

3/4 AGG has broken through its downtrend, which means at least temporarily, it may go sideways to up. Buy it as noted above.

2/25 No changes.

2/19 Buy PCY and JNK as noted above. This will be about 5% each of the total portfolio.

2/11 No changes.

2/4 Cautious. Stopped out of LQD.

1/21 Given the whipsawing, the inconclusiveness of the trend in the SLM Bond Model on page 4, I'll reduce exposure to the longer dated corporate bond market by selling half of LQD. I'll buy a different short-term corporate bond fund as noted above.

	2010	2011	2012	ytd 2013	Incptn	SD
ETF Income Portfolio	4.8%	3.6	4.8	-0.3	13.5	4.0
Aggregate Bond	2.5%	4.3	0.9	-0.7	7.1	2.6

This shows the returns of previous years, year to date (ytd), and from inception (incptn). It also shows standard deviation (SD).

ETF Income Database and Ranking to 2/28/13

<i>Fund Name</i>	<i>Symbol</i>	<i>Style</i>	<i>12m</i>	<i>9m</i>	<i>6m</i>	<i>3m</i>	<i>1m</i>	<i>V</i>	<i>NAV</i>	<i>Rank</i>
iShares 1-3yr Trsry	SHY	BS	0.41	0.22	0.09	0.10	0.06	0.08	84.46	*****
iShares Agg Bond	AGG	BI	2.99	1.56	0.21	-0.28	0.59	0.54	110.83	****
iShares Inter Bond	MBB	BI	1.72	0.82	-0.19	0.10	0.30	0.28	108.03	****
iShares Inter Gov	GVI	BI	2.64	1.66	0.42	-0.13	0.40	0.45	112.40	****
Vngrd Intrmdt Bond	BND	BI	3.12	1.48	0.02	-0.33	0.54	0.53	83.73	****
Vngrd ShrtTrm Bond	BSV	BS	1.68	1.20	0.42	0.16	0.23	0.20	81.06	****
Wtree Dryfs Chns Yuan	CYB	BF	1.45	2.71	2.34	0.04	-0.16	0.43	25.59	****
iShares 3-7yr Trsry	IEI	BI	2.06	0.61	-0.01	-0.19	0.61	0.53	123.42	***
iShares 7-10yr Trsry	IEF	BI	3.74	-0.03	-0.89	-1.11	1.13	1.20	107.16	**
iShares High Yld	HYG	BH	9.16	12.60	5.19	2.69	0.93	1.70	94.04	**
iShares Intrntl Tbond	IGOV	BW	1.11	4.49	0.18	-2.00	-2.75	1.54	100.25	***
iShares Long Corp Bond	LQD	BL	6.27	5.85	1.46	-0.57	1.08	1.37	120.33	***
iShares Trsry Inflt	TIP	BI	4.27	1.36	0.53	-1.15	0.19	0.90	121.01	***
PS Bld America	BAB	BI	9.01	5.41	2.80	1.25	2.06	1.33	30.54	***
PS DB Dollar Bearish	UDN	BF	-3.61	1.46	-1.31	-2.55	-3.68	1.44	26.41	***
PS DB Dollar Bullish	UUP	BF	1.87	-2.70	0.31	2.05	3.47	1.48	22.37	***
PS DB G10 Currency	DBV	BF	4.23	13.22	6.82	3.34	0.08	1.92	26.64	***
PS Emrg Mrkt Svrgn Debt	PCY	BW	13.15	13.15	2.53	-2.60	-0.08	1.94	30.26	***
PS Fdmntl Hi Yield Corp	PHB	BH	7.32	8.60	3.35	1.42	0.34	1.21	19.24	***
PS Insr CA Muni	PWZ	BI	6.12	4.18	2.24	-0.74	0.45	1.09	25.39	***
PS Insr Natl Muni	PZA	BI	6.94	4.56	2.15	-1.41	0.27	1.27	25.75	***
PS Insr NY Muni	PZT	BI	5.24	3.66	1.40	-1.41	0.27	1.19	24.72	***
PS Prfd	PGX	BF	9.64	9.42	3.50	2.01	0.87	1.18	14.84	***
SPDR High Yield	JNK	BH	9.29	12.90	5.27	2.46	0.72	1.78	40.90	***
SPDR Intrntl TBond	BWX	BW	-0.67	2.00	-1.54	-3.20	-2.44	1.20	58.87	***
Wtree Dryfs Comdty Cur	CCX	BF	-2.83	6.88	2.06	1.09	-1.71	2.01	21.27	***
Wtree Dryfs Emrg Crncy	CEW	BF	-0.61	7.88	3.59	1.30	-0.43	1.85	21.08	***
Wtree Dryfs Euro	EU	BF	8.81	21.62	4.45	1.36	-2.51	3.65	22.23	***
Wtree Emrg Mrkt Lcl Debt	ELD	BF	4.99	13.12	5.78	1.98	-0.09	2.01	52.97	***
Currency Euro	FXE	BF	-2.36	5.25	3.61	0.31	-3.88	2.18	129.49	**
iShares 10-20yr Trsry	TLH	BL	3.79	-1.92	-2.52	-2.52	1.18	1.78	133.50	**
iShares 20+ yr Trsry	TLT	BL	3.62	-5.34	-6.01	-4.42	1.24	2.84	118.51	**
PS 1-30 Ldr Trsry	PLW	BI	3.20	-2.30	-2.81	-2.46	0.84	1.70	32.21	**
Wtree Dryfs Brazil Real	BZF	BF	-7.53	6.12	5.44	9.35	0.92	2.90	19.77	**
Wtree Dryfs Indn Rupee	ICN	BF	-3.26	8.27	4.61	1.67	-1.79	2.70	21.35	**

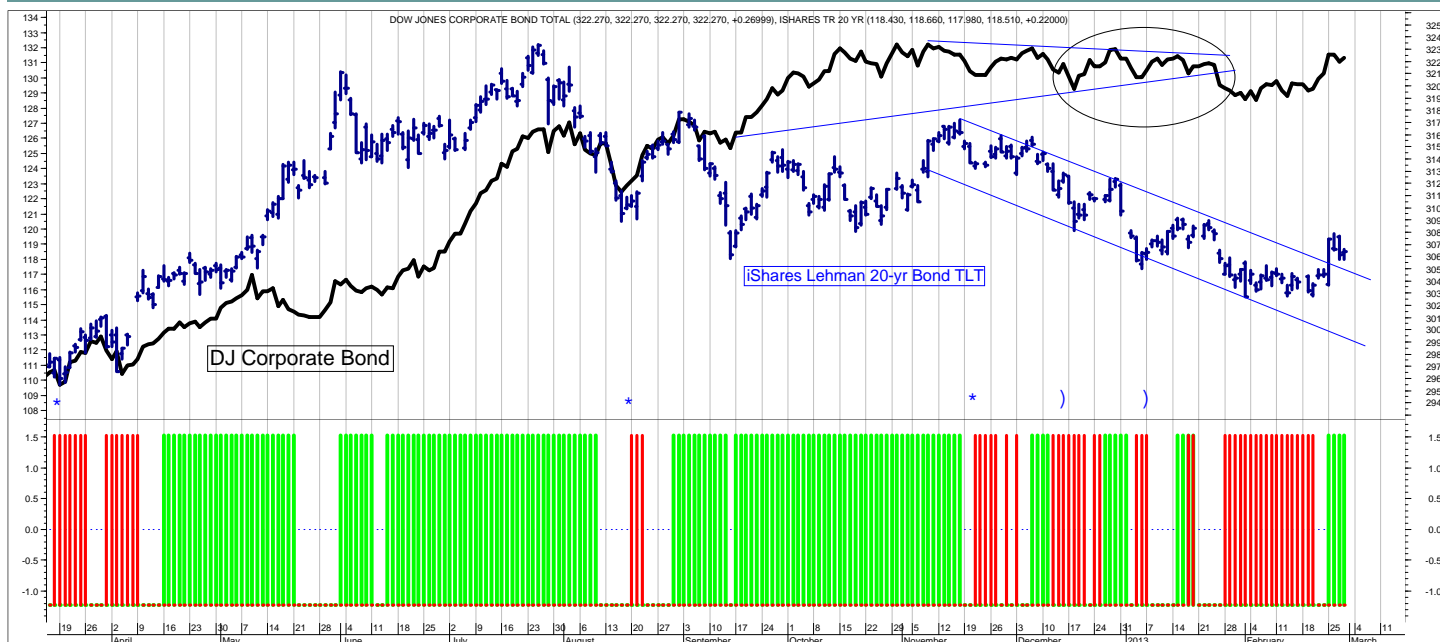
This is the ETF Income Database and Ranking. It shows performance over the last 12, 9, 6, 3, and 1 months through the previous month's end. V is Volatility. NAV is price. CS is Comet Strength (not shown). C is Comet (not shown), which is an ETF's risk-adjusted performance; the higher the better. V, CS, and C are proprietary tools. Rank column shows the number of comets.

ETF LEGEND for pages 3 (Bond), and 7, 8, 9, and 10 (Equity):

Column headings: The first column shows the ETF name, the second column shows its symbol. The third column shows the ETF Style. The first letter is always either B (Bond) or E (Equity) or H (Hybrid). The next letter(s) is the style. So, BS-bond short, BI-bond intermediate, BL-bond long, BF-flexible, BW-world, BH-high yield. And for Equity, EA-equity aggressive, EC-equity contrary, EG-equity gold (precious metals), ESC-small cap, EMC-mid cap, ELC-large cap, EW-world, EGI-growth/income, ERE-real estate, EV-value. Columns 4-8 show percentage returns for the periods shown (12 months, 9, 6, 3, and 1 month). Column 9 is V (volatility); a measure of risk; the lower the V, the less risk. Column 10 is the NAV. Column 11 is the C (comet) ranking. C is the risk-adjusted (V) relative performance (CS). The higher the C indicates the most return for the amount of risk taken.

Generally, our ETF strategy is to own the top ranked ETFs (shown in green) and avoid or short the lower ranked ETFs (shown in red).

SLM Bond Timing Model



The SLM Bond Timing Model is based on the expected direction of the Corporate Bond market. The green bars are bullish (expect higher prices and lower yields) and the red bars are bearish (expect lower prices and higher yields). White spaces indicate that the previous signal is still in effect.

WEEKLY REVIEW

3/4 The SLM Bond Model has turned back bullish. This may also be whipsawish like the previous signals, but we'll jump onboard nonetheless. See the Portfolio on page 2.

2/25 Still defensive. Given the upcoming budget battle and ongoing Fed easing, hard to imagine that the bond bull market has ended. So, will monitor for potential reentry points.

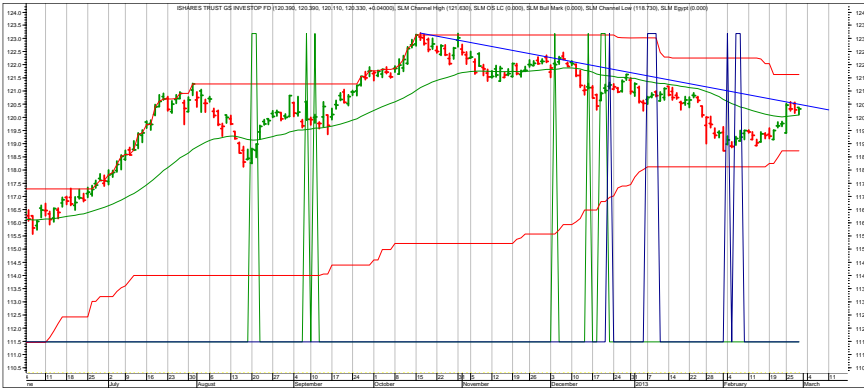
2/19 The domestic corporate and Treasury markets remain weak. Remain defensive.

2/11 Intermediate-term trend is down (lower prices and higher yields) for now.

2/4 The whipsawing continues, suggesting a battle between bulls and bears over interest rates. Is the secular bull market in bonds over? Will the economies of the world recover in 2013? Will the Fed continue its policies? We know the answer to the last question is yes. It will do so until inflation pops above the 2% area or unemployment drops below 6.5%. Neither of which are anywhere near happening. So, whipsaws may continue, but at some point, if it pulls back further (prices down and yields up), a good buying area may emerge.

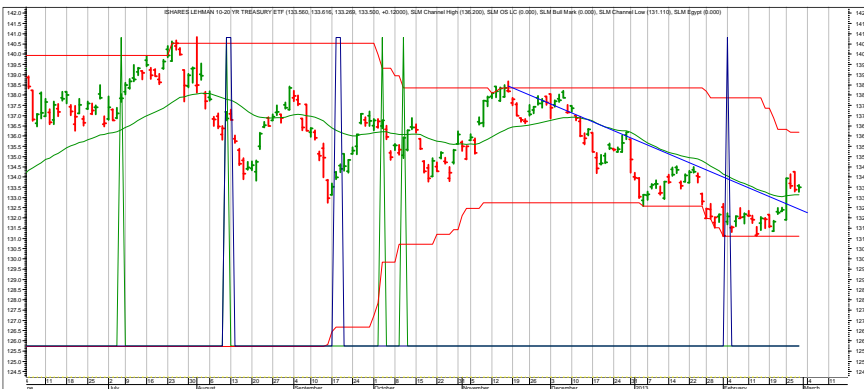
1/28 Again with the whipsawing, but the breakdown through the lower line as shown on the chart above strongly suggests further bond weakness ahead. The economy is coming in stronger than anticipated. The leading indicators from the Conference Board jumped and the previous month's was adjusted from -0.4 to flat. Still, it's hard to anticipate much of a sell off given the Fed's buying proclivity.

Income Charts



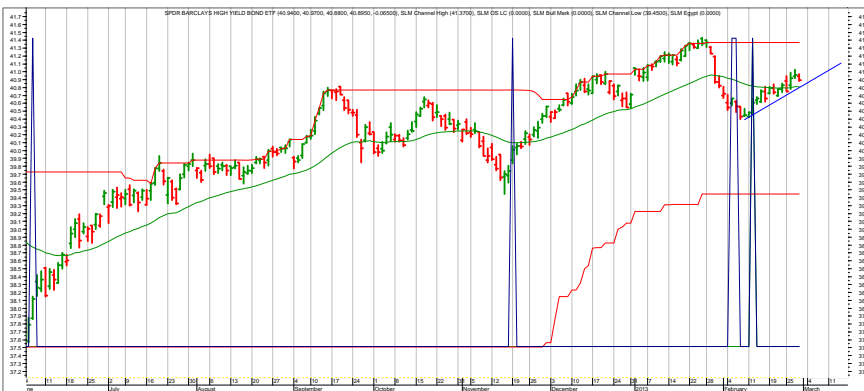
LQD—Investment Grade Corporate

3/4 Back to resistance.
 2/25 Still cautious.
 2/19 Pulling back.
 2/11 Buy signals showing up, but I remain cautious.
 2/4 Trend turn down.
 1/28 Is the secular bull market in bonds over?
 1/21 Weakness.



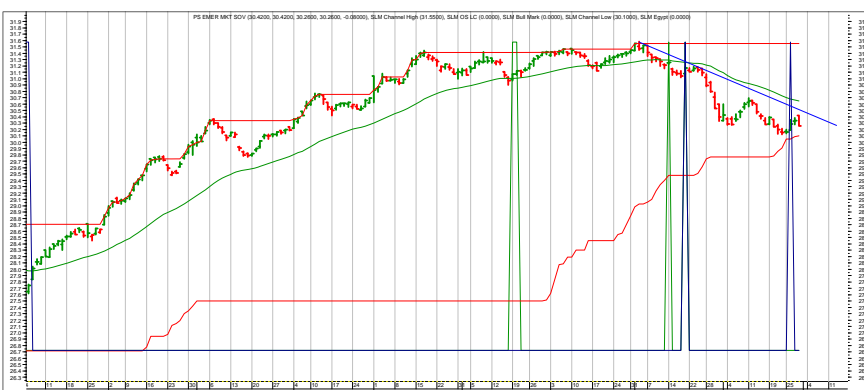
TLH—10-20 year Treasuries

3/4 Possible break to the upside.
 2/25 Possible bounce.
 2/19 Pulling back.
 2/11 Could be a bounce trade is due.
 2/4 Nearing the bottom of a down channel.
 1/28 No changes.
 1/21 No changes.
 1/14 No changes.
 1/7 Weakness in dropping to lows.



JNK—hi-yield bonds

3/4 Hold on.
 2/25 Watch for rebound to new highs.
 2/19 Accumulate.
 2/11 Fairly hard selloff that should lead to a rebound for nimble traders.
 2/4 It was overbought. Will watch for a buy area to emerge.



PCY—International Bonds

3/4 Hold on.
 2/25 Accumulate.
 2/19 Accumulate.
 2/11 No changes.
 2/4 Watching for a buying area.
 1/28 No changes.
 1/21 Pulling back some.
 1/14 Been a heck of a rally. Will look to capture these better.

Each chart shows daily prices, a moving average (smoothed red line on price portion), and spikes. The spikes show potential buy and sell short signals. Generally speaking, if the moving average is trending down, the spike shows a potential sell short. If the moving average is trending up, the spike shows a potential buy. The charts do not show selling or covering signals.

Top ETF Growth Ranking to 2/28/13 (month end)

Fund Name	Symbol	Style	12m	9m	6m	3m	1m	V	NAV	Rank
Guggnhm Airline	FAA	EA	33.67	26.23	38.88	23.22	4.34	5.15	39.22	*****
Guggnhm Spin Off	CSD	EMC	25.15	25.15	21.62	12.02	3.23	2.96	32.29	*****
Guggnhm Timber	CUT	EA	19.42	43.15	29.28	15.62	2.91	4.52	22.27	*****
iShares DJ US Home Constr.	ITB	EA	62.46	48.14	24.32	10.13	-4.01	5.97	22.49	*****
PS Dynmc Bldg Cnstrctn	PKB	EA	39.02	48.27	27.83	12.21	0.27	4.80	18.83	*****
PS Dynmc Energy	PXI	EA	17.00	35.15	19.99	16.73	2.01	4.07	48.72	*****
PS Dynmc Energy Explor	PXE	EA	22.79	46.09	23.38	17.45	2.44	5.29	31.10	*****
PS Gbl Listd Prvt Eqty	PSP	EW	23.69	40.20	25.84	17.20	3.31	4.52	11.22	*****
PS S&P SmlCap Industrls	PSCI	EA	19.87	28.71	21.85	13.76	1.48	3.50	34.90	*****
PS S&P SmlCap Mtrls	PSCM	EA	20.94	32.88	21.23	12.77	-0.09	3.86	34.15	*****
SPDR S&P Homebuilders	XHB	EA	42.19	37.96	20.47	7.84	-1.80	4.77	28.30	*****
Wtree Japan Hedge Eqty	DXJ	EC	16.76	34.57	31.57	22.67	2.74	5.31	40.94	*****
Guggnhm China REIT	TAO	EWR	24.61	40.17	27.74	4.71	-3.39	6.45	23.06	****
Guggnhm Gbl Wtr	CGW	EW	17.01	22.18	14.78	9.91	1.72	3.01	23.60	****
Guggnhm MidCap Core	CZA	EMC	15.82	19.89	14.65	11.98	2.21	2.43	37.07	****
iShares Australia	EWA	EW	19.80	37.05	18.65	11.52	2.91	4.22	26.88	****
iShares Russel MidVal	IWS	EMC	18.71	24.41	15.95	12.23	1.70	2.75	54.91	****
iShares Russell 1000 Value Indx	IWD	ELC	17.52	22.17	12.83	10.05	1.21	2.74	78.40	****
iShares Russell 2000 Value Indx	IWN	ESC	16.68	22.37	14.09	11.53	1.00	3.10	80.81	****
PS DWA Emrg Mrkt T Ldrs	PIE	EW	11.82	23.14	17.19	10.18	4.96	3.26	19.69	****
PS Dyn MagniQuant	PIQ	ELC	16.23	22.49	14.38	11.27	1.68	2.95	29.70	****
PS Dyn Mrkt	PWC	ELC	19.40	24.29	12.56	12.04	1.41	3.36	53.25	****
PS Dynmc Leisure & Enter	PEJ	EA	21.62	17.31	15.29	10.67	1.09	3.30	24.97	****
PS Dynmc Lrg Cap Value	PWV	ELC	18.90	21.80	11.84	9.82	1.64	2.54	23.56	****
PS Dynmc Media	PBS	EA	23.96	29.85	14.54	11.14	3.91	3.65	18.09	****
PS Dynmc Oil & Gas Srvcs	PXJ	EA	6.47	31.29	19.05	18.21	1.97	4.76	23.34	****
PS Dynmc Pharma	PJP	EA	25.43	24.54	14.35	9.91	1.89	3.25	37.81	****
PS FTSE RAFI Asia Pac xJpn	PAF	EW	13.99	31.19	16.66	8.52	2.27	4.05	59.07	****
PS S&P SmlCap Fincl	PSCF	EA	18.70	19.69	11.30	11.60	2.08	2.79	33.30	****
PS Water Resources	PHO	EA	19.94	29.09	20.01	11.08	1.77	3.35	22.46	****
PS Zacks Micro Cap	PZI	ESC	18.17	24.55	16.33	12.69	1.42	3.65	12.88	****
Select SPDR Div	SDY	EGI	16.95	18.99	12.67	9.31	2.18	1.93	63.25	****
Select SPDR Financs	XLF	EA	21.39	27.48	17.25	12.32	1.21	4.05	17.59	****
Select SPDR Health	XLV	EA	22.61	22.10	13.03	8.57	1.26	2.48	43.45	****
Select SPDR Indl	XLI	EA	12.62	20.38	14.25	11.16	2.22	2.52	40.97	****
SPDR S&P Bank	KBE	EA	19.18	22.01	16.61	12.70	2.04	3.94	26.00	****
Vngrd Fincl Srv	VFH	EA	21.03	25.83	16.21	12.30	1.60	3.73	36.72	****
Vngrd Health	VHT	EA	22.45	22.04	12.64	8.85	1.27	2.66	78.10	****
Vngrd Small Cap Value	VBR	ESC	17.32	23.51	15.28	11.79	1.62	2.92	78.59	****
Wtree Eur SC Div	DFE	EW	16.02	33.50	22.96	13.36	-1.52	4.63	42.76	****
Wtree Intrntl REIT	DRW	ERE	21.64	30.96	15.44	5.73	-0.72	4.05	30.41	****
Wtree Intrntl SC Div	DLS	EW	15.93	29.39	20.64	12.23	0.64	3.73	54.69	****
Wtree MidCap Div	DON	EMC	16.79	21.06	13.45	10.04	1.50	2.40	62.12	****
Wtree MidCap Earn	EZM	EMC	13.50	24.96	17.03	11.16	1.53	3.17	67.67	****
Wtree Middle East Div	GULF	EW	13.18	19.12	17.45	12.47	3.66	2.59	16.69	****
Wtree Sml Cap Div	DES	ESC	19.19	23.44	14.42	11.56	2.19	2.87	54.78	****

This page shows the top ranked ETF Growth Database. It shows performance over the last 12, 9, 6, 3, and 1 months through the previous month's end. V is Volatility. NAV is price. CS is Comet Strength (not shown). C is Comet, which is an ETF's risk-adjusted performance; the higher the better (not shown). This gives us the Rank column (shown).

Generally speaking, we want to own the top-ranked ETFs with 5 and 4 comets. (Comets, not stars, because unlike stars that are fixed, comets come into and out of prominence. We want our thinking, our metaphor aligning with reality.

Middle ETF Growth Ranking to same month end

<i>Fund Name</i>	<i>Symbol</i>	<i>Style</i>	<i>12m</i>	<i>9m</i>	<i>6m</i>	<i>3m</i>	<i>1m</i>	<i>V</i>	<i>NAV</i>	<i>Rank</i>
Alerian MLP	AMPL	EGI	6.23	13.72	7.81	6.14	0.31	2.34	17.08	***
Guggnhm China All	YAO	EWR	1.19	18.05	17.88	5.30	-4.96	5.00	25.08	***
Guggnhm China Sml	HAO	EWR	4.57	24.01	32.20	10.23	-1.61	5.93	24.48	***
Guggnhm Dfnsv Eqty	DEF	EV	15.28	15.61	9.10	8.06	2.27	2.01	31.12	***
Guggnhm Gbl Div	LVL	EW	0.53	17.51	7.67	5.43	-2.43	3.58	13.27	***
Guggnhm Inscr Sent	NFO	EMC	11.38	21.62	12.19	10.29	0.29	3.01	37.57	***
Guggnhm Intrntl A Incm	HGI	EW	-0.95	17.53	8.55	5.78	-1.94	3.44	17.16	***
Guggnhm Multi Ast In	CVY	EV	11.70	17.45	7.76	7.05	0.04	2.26	23.33	***
Guggnhm R J All	RYJ	ELC	9.52	17.07	11.99	10.18	0.36	2.77	25.20	***
Guggnhm Shipping	SEA	EA	-1.93	9.54	14.49	10.94	-1.27	4.82	17.05	***
iShares Canada	EWG	EW	-0.62	13.91	3.98	1.72	-2.25	2.96	28.22	***
iShares China	FXI	EW	-0.69	19.48	18.04	5.07	-6.08	5.36	38.95	***
iShares Cohen&Str REIT	ICF	ERE	13.70	10.30	2.71	7.00	0.30	2.87	81.04	***
iShares Core S&P 500	IVV	ELC	13.42	17.60	8.78	7.55	1.36	2.69	152.50	***
iShares Core S&P Mid Cap	IJH	EMC	14.36	20.35	14.17	10.53	0.85	2.75	110.03	***
iShares DJ Slct Div	DVY	EGI	14.40	14.45	8.86	7.00	1.60	1.80	61.09	***
iShares EAFE Indx	EFA	EW	10.24	26.17	14.05	6.86	-1.29	3.49	58.22	***
iShares Emrg Mrkt Stk	EEM	EW	-0.69	16.78	10.70	4.06	-2.28	3.88	43.21	***
iShares Europe 350	IEV	EW	9.85	27.80	12.74	5.11	-3.45	3.93	39.68	***
iShares Germany Indx	EWG	EW	10.75	30.41	16.26	4.89	-4.05	5.26	24.67	***
iShares Hong Kong Indx	EWH	EW	13.61	30.23	19.24	6.01	-0.84	4.16	20.12	***
iShares Japan	EWJ	EW	4.30	17.19	13.89	10.59	2.41	3.63	10.21	***
iShares Malaysia Indx	EWM	EW	1.32	7.08	1.61	0.50	1.18	2.39	14.62	***
iShares Mexico	EWX	EW	21.70	32.55	16.48	6.30	-3.12	4.57	71.32	***
iShares Prfrd	PFF	EGI	9.14	9.99	4.25	2.27	0.53	1.43	40.17	***
iShares REIT	IYR	ERE	17.62	14.56	5.93	8.38	1.26	2.74	68.12	***
iShares Russell 1000 Grwth Indx	IWF	ELC	9.32	13.26	5.59	5.39	1.08	2.63	69.00	***
iShares Russell 2000	IWM	ESC	13.94	20.97	12.94	11.19	1.00	3.19	90.48	***
iShares S&P 100 Indx	OEF	ELC	12.61	16.06	6.71	6.27	1.32	2.69	68.54	***
iShares Singapore	EWS	EW	10.48	22.25	6.69	3.52	-0.80	3.92	13.66	***
iShares Slct Div	IDV	ELC	10.75	26.47	10.74	5.28	-1.95	3.61	34.26	***
iShares South Korea Indx	EWY	EW	3.64	17.92	10.23	4.04	3.56	4.46	61.69	***
iShares Spain	EWP	EW	1.14	47.63	17.33	5.93	-4.75	7.12	29.90	***
iShares Taiwan Indx	EWT	EW	1.34	14.27	8.94	1.72	0.90	3.89	13.52	***
iShares EMU Indx	EZU	EW	8.68	32.02	14.71	4.31	-4.61	5.03	33.12	***
Market Vectors Oil Services	OIH	EA	-0.49	22.85	7.49	11.87	-1.67	5.07	42.87	***
Market Vectors Semiconductor	SMH	EA	3.91	15.37	8.73	11.88	2.39	3.83	35.12	***
PS Aerospace & Def	PPA	EA	11.43	20.57	12.32	6.99	2.73	2.57	21.83	***
PS BLDR Asia 50 ADR	ADRA	EW	6.27	23.36	17.05	10.74	0.41	3.75	27.12	***
PS BLDR Dvlpd Mrkt 100 ADR	ADRD	EW	9.39	25.88	13.31	6.79	-2.13	3.43	21.56	***
PS BLDR Europe 100 ADR	ADRU	EW	8.83	25.63	10.94	4.37	-4.41	3.59	21.03	***
PS Buyback Achievers	PKW	EGI	13.86	17.37	10.44	8.43	2.07	2.43	32.11	***
PS Cleantech	PZD	EA	5.46	21.20	18.68	13.54	2.04	3.79	25.01	***
PS Dividend Achievers	PDM	EGI	14.50	15.98	8.39	7.43	1.52	2.00	17.40	***
PS DWA Dvlpd Mrkt T Ldrs	PIZ	ELC	10.34	26.17	13.28	5.53	0.48	3.45	21.02	***
PS DWA Tech Ldr	PDP	ELC	13.16	13.63	8.92	6.41	1.33	2.47	29.63	***
PS Dyn OTC	PWO	ESC	5.77	12.28	4.63	10.82	1.67	3.20	51.67	***
PS Dynmc Banking	PJB	EA	8.89	10.39	2.61	5.05	-0.86	3.33	13.79	***
PS Dynmc Basic Matrl	PYZ	EA	15.70	25.88	17.15	9.57	-0.95	3.76	42.60	***
PS Dynmc Biotech	PBE	EA	11.40	15.73	6.41	6.05	-0.32	4.02	24.72	***
PS Dynmc Consmr Discr	PEZ	EA	12.64	14.45	8.31	6.57	1.40	2.91	31.78	***
PS Dynmc Consmr Staples	PSL	EA	16.50	17.35	11.37	7.56	3.93	2.34	36.50	***
PS Dynmc Fncl	PFI	EA	16.08	21.58	13.09	8.82	1.12	2.89	22.55	***
PS Dynmc Food & Bev	PBJ	EA	14.40	13.18	9.49	8.65	3.74	1.95	21.93	***
PS Dynmc Healthcare	PTH	EA	18.31	20.01	12.40	11.07	2.68	3.46	36.42	***
PS Dynmc Lrg Cap Grth	PWB	ELC	13.85	14.95	8.88	6.08	1.36	2.66	20.07	***
PS Dynmc Retail	PMR	EA	10.19	8.87	5.78	3.23	0.38	2.56	26.33	***
PS Dynmc Semicndctr	PSI	EA	-1.74	7.18	3.74	8.99	1.13	3.48	15.21	***
PS Dynmc Software	PSJ	EA	11.45	15.13	6.46	9.15	1.65	3.37	29.00	***
PS Dynmc Technology	PTF	EA	7.04	16.39	6.24	11.52	2.54	3.89	28.31	***
PS Dynmc Utilities	PUI	EA	11.51	11.95	6.37	5.80	0.11	1.91	17.99	***
PS Emrg Mrkt Infrastrctr	PXR	EW	-3.07	17.01	17.13	6.90	-2.37	4.47	42.79	***
PS Fincl Pfd	PGF	EGI	10.38	10.46	3.57	2.17	0.95	1.60	18.51	***
PS FTSE RAFI Dvlp Mrkt xUSA	PFX	EW	5.86	26.96	14.30	7.37	-2.18	4.31	37.17	***
PS FTSE RAFI Dvlp Mrkt xUSA Sml	PDN	EW	9.15	25.00	16.28	9.18	0.70	3.60	24.45	***
PS FTSE RAFI US 1500 Sml-Mid	PRFZ	EMC	14.33	22.74	14.67	11.17	0.99	3.36	74.65	***
PS Gbl Agriculture	PAGG	EA	7.01	18.08	9.59	5.26	-2.10	3.40	31.68	***
PS Gbl Clean Enrgy	PBD	EW	-6.42	20.15	17.63	18.18	2.73	6.02	8.64	***
PS Gbl Water	PIO	EW	10.25	20.09	13.39	10.08	0.53	3.58	19.00	***
PS Gbl Wind Energy	PWND	EW	-14.45	19.60	14.18	16.54	1.31	5.62	6.20	***

This shows the ETF Growth Database and Ranking. It shows performance over the last 12, 9, 6, 3, and 1 months through the previous month's end. V is Volatility. NAV is price. Rank shows the number of comets from 5 to 1. The larger the better.

Middle ETF Growth Ranking to same month end

Fund Name	Symbol	Style	12m	9m	6m	3m	1m	V	NAV	Rank
PS Hi Yld Eqty Div	PEY	EGI	13.60	15.18	10.26	8.83	2.03	1.73	10.16	***
PS Ibtstn Altrntv	PTO	ELC	-1.11	8.54	2.86	-1.29	-1.54	2.34	11.48	***
PS Intrntl Dvdnd	PID	EW	9.24	20.79	10.89	6.91	-0.97	2.46	16.39	***
PS Mega Cap	PMA	ELC	8.64	16.16	5.02	4.74	0.46	2.92	30.42	***
PS MENA Frntr Countries	PMNA	EW	-0.92	4.78	2.83	4.29	0.46	2.13	10.93	***
PS Mrngstr Stk	PYH	ELC	15.17	19.93	9.69	4.92	-1.50	2.92	24.27	***
PS NASDAQ Intrnt	PNQI	EA	13.82	18.18	11.94	11.40	-0.51	3.95	44.65	***
PS RvrFrnt Tac Bal	PAO	EGI	6.04	13.51	7.19	2.66	-1.83	2.52	12.85	***
PS RvrFrnt Tac G&I	PCA	EGI	6.76	10.94	5.07	2.78	-0.67	1.61	13.44	***
PS S&P 500 BuyWrite	PBP	ELC	3.29	5.59	0.48	2.03	0.40	1.64	20.14	***
PS S&P 500 LowVolatility Portfolio	SPLV	ELC	17.22	14.51	8.68	7.07	2.83	1.89	29.70	***
PS S&P SmlCap Cnsmr Dis	PSCD	EA	15.58	18.47	11.11	8.45	-0.25	3.38	35.21	***
PS S&P SmlCap Cnsmr Stpl	PSCC	EA	15.69	11.96	5.34	6.24	1.95	2.80	37.04	***
PS S&P SmlCap Energy	PSCE	EA	-3.25	21.92	12.97	11.30	3.79	4.31	36.67	***
PS S&P SmlCap Hlth Care	PSCH	EA	14.08	16.76	6.84	10.00	2.47	3.64	38.56	***
PS S&P SmlCap Info Tech	PSCT	EA	7.95	18.18	10.31	12.24	1.79	3.05	32.99	***
PS S&P SmlCap Utilities	PSCU	EA	6.69	11.24	4.25	6.92	0.87	2.33	31.35	***
PS US REIT	PSR	ERE	15.34	12.47	5.37	8.00	1.17	2.70	59.55	***
PS WilderHill Prgsv Enrgy	PUW	EA	3.69	19.71	13.25	11.30	0.11	3.82	27.38	***
Select SPDR Cnsmr Disc	XLY	EA	19.88	19.76	12.93	7.85	1.60	3.05	50.93	***
Select SPDR Cnsmr Stpl	XLP	EA	18.17	15.63	9.40	6.88	3.31	2.33	38.09	***
Select SPDR Enrgy	XLE	EA	5.65	23.86	9.66	9.89	0.44	3.60	77.69	***
Select SPDR MatrIs	XLB	EA	6.56	16.05	9.50	5.81	-1.36	3.17	38.49	***
Select SPDR Utilities	XLU	EA	11.68	7.67	5.24	7.18	2.32	2.40	37.43	***
SPDR DJ Glbl Titans	DGT	EW	7.49	21.29	12.79	8.20	-0.86	3.14	58.50	***
SPDR DJ Industrials	DIA	ELC	11.28	15.55	8.56	8.55	1.61	2.41	140.28	***
SPDR Euro Stoxx 50	FEZ	EW	6.79	32.62	13.02	2.54	-6.29	5.30	33.68	***
SPDR Mid Cap Trust	MDY	EMC	14.19	20.10	13.82	10.44	0.83	2.73	200.51	***
SPDR S&P 500	SPY	ELC	13.10	17.36	8.75	7.41	1.28	2.66	151.61	***
SPDR S&P Oil & Gas Expl. & Prod.	XOP	EA	-1.11	22.16	10.78	9.99	-0.22	4.48	57.97	***
SPDR S&P Regional Banking	KRE	EA	15.23	15.96	10.63	11.01	1.81	3.53	30.37	***
SPDR S&P Retail	XRT	EA	15.86	16.60	10.96	7.02	0.06	2.80	67.09	***
SPDR Wish REIT	RWR	ERE	15.81	12.00	4.50	8.13	0.81	2.92	76.08	***
Vngrd Cnsmr Dis	VCR	EA	18.59	20.21	13.11	7.65	0.68	2.95	81.01	***
Vngrd Cnsmr Stpls	VDC	EA	17.96	16.01	9.54	6.95	3.10	2.28	95.97	***
Vngrd Div Aprprctn	VIG	EGI	13.47	16.63	9.85	7.66	1.16	2.09	63.83	***
Vngrd Emrg Mrkt	VWO	EW	-0.28	17.05	10.96	4.61	-2.36	3.85	43.51	***
Vngrd Europe Pacific	VEA	EW	9.85	26.26	13.98	6.99	-1.15	3.51	36.16	***
Vngrd European Indx	VGK	EW	10.16	28.26	12.80	5.07	-3.40	4.01	49.20	***
Vngrd Extnd 4500	VXF	ELC	13.96	21.02	13.94	10.87	0.82	3.04	65.14	***
Vngrd Grth	VUG	ELC	10.61	14.42	6.25	5.35	0.83	2.78	74.93	***
Vngrd Large Cap	VV	ELC	13.42	17.71	9.32	7.84	1.36	2.68	69.54	***
Vngrd Materials	VAW	EA	7.57	18.10	10.15	6.14	-1.37	3.21	86.33	***
Vngrd MidCap Val	VO	EMC	12.65	19.74	13.30	10.62	1.22	2.78	88.93	***
Vngrd REIT	VNQ	ERE	17.46	13.68	5.63	8.91	1.22	2.95	69.09	***
Vngrd Small Cap	VB	ESC	15.33	22.08	13.81	10.94	1.26	3.05	87.12	***
Vngrd Small Cap Grth	VBK	ESC	13.23	20.53	12.00	9.88	0.89	3.25	95.30	***
Vngrd TTL Intrntl Stk	VXUS	EW	6.99	23.21	12.97	6.17	-1.14	3.46	47.65	***
Vngrd TTL Stock	VTI	ELC	13.54	18.24	9.68	8.14	1.28	2.73	78.24	***
Vngrd Utilities	VPU	EA	12.97	9.43	6.46	7.76	2.31	2.35	81.04	***
Wtree DEFA	DWM	EW	9.95	26.62	12.52	6.90	-1.53	3.58	47.64	***
Wtree DEFA Eqty Incm	DTH	EW	10.52	26.96	11.86	6.51	-2.08	3.43	41.36	***
Wtree Div Ex Fincl	DTN	ELC	14.29	19.28	9.64	7.45	1.55	2.21	59.27	***
Wtree Emrg Mrkt Eincm	DEM	EW	-1.09	11.64	7.93	4.96	-2.40	3.08	55.70	***
Wtree Emrg Mrkt SC Div	DGS	EW	9.29	21.83	16.04	9.90	1.68	3.36	50.90	***
Wtree Eqty Income	DHS	EGI	16.61	15.76	8.13	7.49	1.98	2.23	49.12	***
Wtree Glbl Eqty Incm	DEW	EW	10.12	21.15	9.39	5.66	-1.18	2.61	44.23	***
Wtree Intrntl Div Ex Fincl	DOO	EW	4.12	19.69	7.10	3.95	-3.08	3.21	41.88	***
Wtree Intrntl LC Div	DOL	EW	9.08	25.14	11.08	5.60	-2.27	3.41	45.65	***
Wtree Intrntl MC Div	DIM	EW	11.92	27.89	17.47	8.94	-0.17	3.61	52.05	***
Wtree Intrntl Utilities	DBU	EW	-1.41	10.31	6.43	4.01	-3.02	3.11	18.00	***
Wtree Japan SC Div	DFJ	EWR	5.98	13.34	10.12	7.80	3.05	2.70	45.60	***
Wtree LrgCap Div	DLN	ELC	13.39	15.72	7.79	6.92	1.40	2.23	56.83	***
Wtree S&P 500	EPS	ELC	12.04	18.01	9.56	8.12	1.46	2.87	52.91	***
Wtree Ttl Earn	EXT	ELC	12.89	17.71	10.19	8.24	1.42	2.78	54.34	***
Wtree World Ex US Grth	DNL	EW	2.59	21.49	11.90	4.61	-1.63	3.63	52.53	***

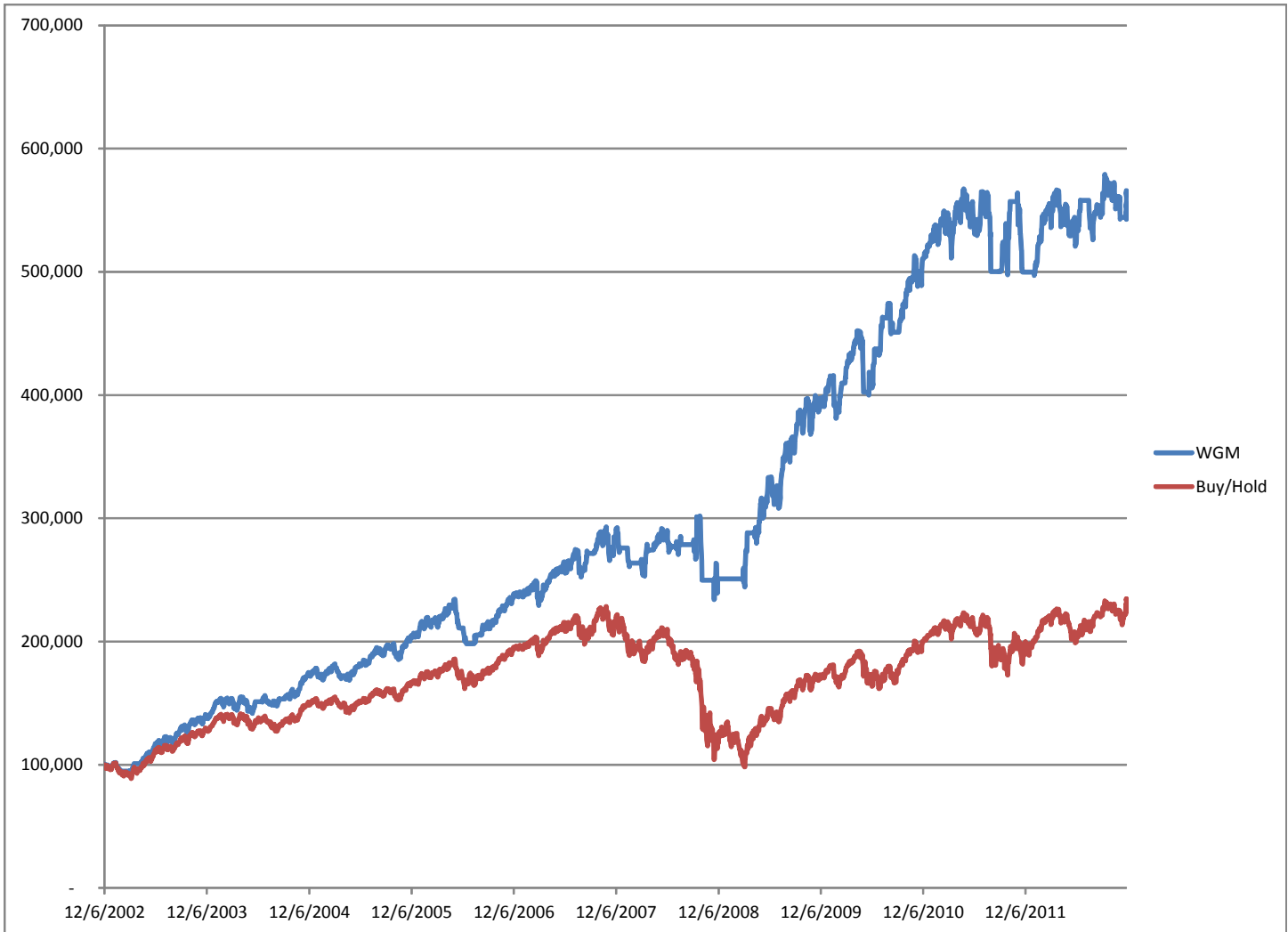
This shows the ETF Growth Database and Ranking. It shows performance over the last 12, 9, 6, 3, and 1 months through the previous month's end. V is Volatility. NAV is price. Rank shows the number of comets from 5 to 1. The larger the better.

Bottom ETF Growth Ranking to same month end

<i>Fund Name</i>	<i>Symbol</i>	<i>Style</i>	<i>12m</i>	<i>9m</i>	<i>6m</i>	<i>3m</i>	<i>1m</i>	<i>V</i>	<i>NAV</i>	<i>Rank</i>
Guggnhm Candn Enrg Incm	ENY	EWR	-16.41	3.27	-7.87	-4.26	-4.56	3.91	14.87	**
Guggnhm Frntr	FRN	EW	-5.69	2.58	2.21	2.69	-6.17	3.76	19.17	**
Guggnhm Solar	TAN	EA	-32.09	11.68	17.50	37.20	0.17	11.03	17.95	**
iShares Gold	IAU	EG	-6.74	1.05	-6.74	-7.85	-5.12	3.82	15.37	**
iShares Italy Indx	EWI	EW	-4.26	26.49	6.55	-1.98	-12.39	7.13	12.44	**
iShares Latin Amr	ILF	EW	-8.43	10.83	5.45	5.27	-4.70	3.97	43.35	**
Market Vectors Russia	RSX	EW	-10.41	23.62	9.36	6.26	-6.39	7.14	28.85	**
PS BLDR Emrg Mkt 50 ADR	ADRE	EW	-8.05	10.46	5.66	3.05	-3.92	3.93	39.20	**
PS DB Agriculture	DBA	EA	-9.74	1.23	-13.21	-8.49	-5.41	2.85	26.40	**
PS DB Base Metals	DBB	EG	-12.41	1.15	3.58	-3.80	-4.88	4.71	18.50	**
PS DB Commodity	DBC	EA	-7.47	7.49	-5.77	-3.45	-4.71	3.62	27.13	**
PS DB Energy	DBE	EA	-8.21	10.04	-2.66	0.28	-3.92	4.24	28.16	**
PS DB Gold	DGL	EG	-8.08	-0.06	-7.46	-8.33	-5.32	3.88	53.94	**
PS DB Oil	DBO	EA	-17.36	4.09	-5.55	1.42	-6.34	4.65	25.71	**
PS DB Precious Metals	DBP	EG	-10.41	0.09	-8.15	-9.82	-6.23	4.41	53.61	**
PS Dynmc Networking	PXQ	EA	-5.29	7.99	6.84	7.50	-0.04	4.84	26.20	**
PS FTSE RAFI Emrg Mrkt	PXH	EW	-4.91	16.20	9.04	4.26	-2.98	4.27	22.17	**
PS Glbl Coal	PKOL	EA	-30.18	0.22	1.36	0.03	-7.50	5.92	18.62	**
PS Glbl Nuclr Enrgy	PKN	EW	-6.47	12.08	4.72	8.10	-3.64	4.38	16.16	**
PS Glbl Steel	PSTL	EA	-19.35	9.13	14.64	8.55	-4.15	5.81	14.08	**
PS Gldn Drgn USX China	PGJ	EW	-14.20	1.17	5.91	3.35	-3.66	4.85	18.95	**
PS India	PIN	EW	-8.82	14.42	7.83	-1.48	-7.96	6.88	18.04	**
PS Lux Nanotech	PXN	EA	-1.34	3.93	3.59	9.65	-1.25	3.53	6.32	**
PS QQQ	QQQ	ELC	5.47	9.28	-0.72	2.55	0.34	3.30	67.10	**
PS WilderHill Cln Enrgy	PBW	EA	-20.81	6.64	6.69	14.88	-0.90	6.30	4.40	**
Pro Shares Short Russell 2000	RWM	ESC	-16.08	-19.84	-12.90	-10.69	-1.05	3.33	22.55	**
Pro Shares Short S&P 500	SH	EC	-13.86	-16.32	-9.04	-7.30	-1.30	2.74	31.89	**
Select SPDR Technlgy	XLK	EA	4.10	7.55	-1.85	2.31	0.78	3.11	29.63	**
SPDR Gold	GLD	EG	-6.87	0.91	-6.83	-7.86	-5.09	3.80	153.00	**
SPDR S&P Metals & Mining	XME	EA	-20.64	4.14	-0.15	-3.94	-7.55	6.18	40.56	**
US Natural Gas	UNG	EA	-6.76	14.23	1.91	-5.93	2.24	9.48	19.18	**
US Oil Fund	USO	EA	-19.21	1.38	-7.89	1.54	-6.29	5.16	33.06	**
Vngrd Tech	VGTX	EA	1.42	7.65	-1.06	3.07	0.52	3.44	71.01	**
Wtree India	EPI	EWR	-9.57	16.59	11.07	-2.64	-9.41	7.81	18.30	**
iShares Brazil Indx	EWZ	EW	-17.90	9.14	5.55	7.88	-2.89	4.88	55.13	*
Guggnhm BRIC	EEB	EW	-13.30	8.84	6.10	3.95	-4.33	4.53	34.91	*
iPath S&P 500 VIX Shrt Trm	VXX	EC	-75.56	-71.22	-47.94	-19.07	-1.52	15.78	23.97	*
iShares Silver	SLV	EG	-17.91	2.15	-10.56	-14.89	-9.53	7.88	27.54	*
Market Vectors Gold Minors	GDX	EG	-31.80	-13.70	-21.19	-20.55	-10.14	7.52	37.40	*
Market Vectors Junior Gold Miners	GDXJ	EG	-41.12	-14.90	-24.17	-23.74	-16.24	9.23	15.83	*
PS DB Silver	DBS	EG	-19.01	1.43	-10.95	-15.49	-9.87	8.10	48.78	*
PS Glbl Gold Precious Mtls	PSAU	EG	-30.05	-7.13	-14.94	-17.82	-9.00	7.34	30.75	*

This shows the ETF Growth Database and Ranking. It shows performance over the last 12, 9, 6, 3, and 1 months through the previous month's end. V is Volatility. NAV is price. Rank shows the number of comets from 5 to 1. The larger the better.

World Growth Model vs. World Growth Index



The chart above compares the past ten years of the backtested World Growth Model (WGM) with a buy/hold of the same five underlying indexes (EEM, EFA, IWM, QQQ, SPY), which is the fully invested always World Growth Index (WGI). Dividends are reinvested. No commissions included to buy/sell. Past performance does not guarantee future performance.

The five ETF indexes are static; that is, they were the only ETFs used over the period. So, the selecting model was static. No attempt was made to buy the top-ranked by C (risk-adjusted relative performance) ETFs. Presumably, if the top ETFs had been picked, the performance would be greater.

What was used for this WGM was a newish timing model that combines a number of features, including two timing models with two stop orientations. The clearest use of stops is shown in the 2008 bear market. While the bear erased all of the gains of the buy/hold index (WGI) from 12/6/2002, the WGM was stopped out back to cash, thus preventing further losses.

I've begun to implement this Model in this Newsletter based on these results as of 12/10/12.

As mentioned, the next step is to incorporate the selecting model (buy the top ETFs by C) with the timing model.

Overflow from Page 1, Definitions, and Newsletter Updates

(Continued from page 1) **REVIEW**

the world's Central Banks continue to flood their countries with easy money. They are trying to stimulate growth by raising asset prices.

What is a surprise is not seeing the ultimate asset so-called, gold, go up in price, but down. It is as if deflation, not inflation, is the predominate worry. Deflation of currency.

For example, falling steadily over the last few months, GLD, gold ETF, is finally at major support dating back to its breakout in

the summer of 2011. It has now retraced that move. It should hold here, or if it falls through, I would expect it to be a trap. A trap is when the broad expectation gets set up, and is confirmed, but then reverses direction. In GLD's case, what this means is for it to drop through support at 150 (current price is 152), appear to confirm to the downside (by dropping through support), and then reverse course to close back above 150 within a week or so. We'll see.

In the meantime, as shown

on the chart on page 1, new support levels have been drawn at previous lows. What is happening is that the Industrials have ratcheted to new highs, but the Transports are lagging ever so slightly. A confirmation of this short-term negative divergence would be for both indexes to close below their previous respective lows. Industrials at 13,784 and Transports at 5,815.

Please see the individual portfolio pages for any changes.

Just to clarify a couple of terms that I use regularly.

Short-term is days to weeks.

Intermediate-term is weeks to months.

Long-term is months to years.

Cyclical is 1-5 years.

Secular is 5 years to decades.

Bull market is a series of higher highs and higher lows.

Bear market is a series of lower lows and lower highs.

Neutral market is sideways without a discernible pattern.

Oddly, bull and bear markets may occur simultaneously, but only over different time periods. For example, we may be in a secular bear market, but there are cyclical bull and bear markets within that.

Closing stops are "mental". I look at the position at quarter to the close. If it is trading below the stop (or above if short), then I act with the assumption the security will trigger that closing stop on that day. I sell (or cover) at the close that day.

New portfolio stops are being implemented. These are internal and will be emailed if triggered.

3/4/The ETF selection tables on pages 3 and 7-10 are updated through 2/28/13.

2/25 No updates.

2/19 Work has begun on a World Income Index that will be similar to the World Growth Index. As well, an investment strategy is also being developed.

2/11 No changes.

2/4 The ETF selection tables on pages 3 and 7-10 are updated through 1/31/13.

Work continues on the new model that combines the top ETFs with the newish timing model.

Descriptions & Disclosures

PORTFOLIO DESCRIPTIONS (pages 2 and 6)

Our guiding goal is to provide the most return with the least risk consistently over time through bull and bear markets.

Income Portfolio, page 2: Uses a proprietary selection methodology on all of the monitored bond-oriented ETFs to pick the top ETFs. I then use a proprietary timing model to decide whether to buy, sell, hold, or avoid. From time to time, timing considerations may take precedence over selections; in other words, we may own lower ranked funds because of anticipated timing changes.

Growth Portfolio, page 6: As of 12/10/12, it is based on the World Growth Index, which is made up of a static fully invested 20% in each of five ETFs (EEM, EFA, IWM, QQQ, SPY). The Portfolio will buy and sell the WGI based on proprietary timing signals.

Both portfolios were started on 1/1/10 with \$100,000. However, the Growth Portfolio strategy was changed on 12/10/12 to the World Growth Model.

Portfolio changes will usually be made at the close on Monday, unless otherwise noted in any emailed hotline update or triggered stop orders. Issues are normally posted on Mondays by 1:35pm cst (Tuesday if Monday is a holiday).

Portfolios are updated through the Friday close the week before.

Dividends are reinvested in additional shares.

Commissions of \$10 per trade are applied. Interest is zero for the money market (cash) position.

SUBSCRIPTIONS: To receive *ETF Selections & Timing*, you may subscribe in one of three ways. You may subscribe on the web site InvestmentST.com using PayPal or call 1-800-800-6563 for Amex, Visa, MasterCard, or Discover orders or send a check to the address on the front page. Subscriptions may be tax deductible.

The recurring monthly subscription is \$24.00. An annual subscription is \$240.00. Subscribers receive this weekly eNewsletter. There is no mailed issue. Subscribers retrieve the current weekly issue at the web site InvestmentST.com by logging in with a user name and password.

Unless otherwise noted, the weekly eNewsletter is posted by 1:35 PM central time each Monday, except for holidays and then on Tuesday. It may contain actionable, specific buy or sell advice to take that day at the Monday close in each portfolio. We may also use stop orders. For stops, check the ETF at quarter to the close. If it is below (or above) a stop level, assume it will close there and act on that. Portfolio data will be updated through the previous Friday's close. Fund symbols, rather than names, are the official identification used for activity.

GUARANTEE: Subscriptions may be cancelled at any time. Annual subscriptions are refundable for the weekly term remaining with a four-week minimum charge, using a 52-week count. Monthly subscriptions just expire.

PUBLISHER: Watercourse Way Holdings, LLC publishes this newsletter.

REPRINTS: This eNewsletter is intended for subscribers only, reprints are not permitted.

DISCLAIMER: The information contained herein is assembled from sources who are believed reliable, but the accuracy of data or advice cannot be guaranteed. Past performance does not guarantee future performance. Portfolio values include a commission of \$10/trade, dividend reinvestment, and short-term redemption charges. The World Growth Index and DJ Aggregate Bond Index are equity and bond indexes and may or may not be useful in comparing returns. Security values fluctuate. Information is provided without consideration for a subscriber's personal situation. Watercourse Way Holdings, LLC its members and associates may or may not invest identically to or at the same time as portfolios or advice shown herein.

COPYRIGHT: Copyright, 2009-13, Watercourse Way Holdings, LLC. All rights reserved.