

ETF Selections & Timing

Watercourse Way Holdings, LLC

P.O. Box 830396
Richardson, TX 75083-0396
972-680-2366

InvestmentST.com

February 24, 2014 (data date through previous Friday close)

Volume 5
Issue 8

Trends Away

Today's rally, apparently strong though it may look, doesn't really solve anything to put things back "in gear" to the upside. The rally is basically setting up further negative divergences between major indexes within the ongoing background of an overbought,

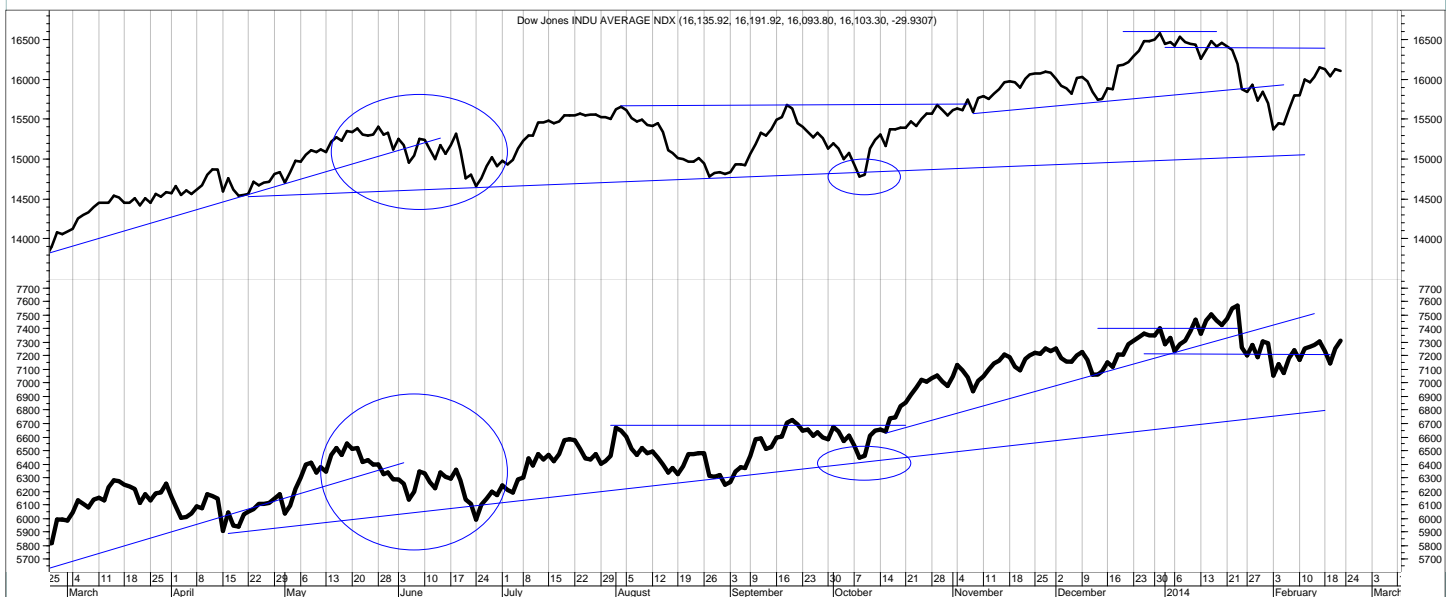
overvalued, and over bullish market.

As mentioned last week, however, just like with a new trend down, with a new trend up, we just never know how far up it will rally. It could stop here or it could rally 50% or somewhere in between. It is

similar to the final bubble top in 2000. The market kept rallying long after all fundamental and "rational" indicators were flashing sell. Just don't know the future or the foibles of investors.

So today, after the steep

(Continued on bottom right on page 12 see REVIEW on top)



This is the daily chart of the Dow Industrials (upper) and Dow Transports (lower)

SCOREBOARD (returns year to date and past weeks to date)

Model	YTD	52-week	26-week	13-week	4-week	1-week
ETF Income Portfolio	0.2%	1.6%	1.4	0.0	0.2	0.1%
ETF Growth Portfolio	0.0%	18.2%	9.7	0.6	-0.1	0.6%
Index						
Aggrt Bond (AGG)	1.3%	-0.2%	2.7	0.9	0.2	0.0%
S&P 500 TR (SPY)	0.0%	23.5%	11.5	2.3	2.8	0.0%
World Growth Index	0.3%	22.7%	12.0	2.8	2.9	0.4%

CONTENTS

Pages 2-5Income
Page 4Bond Model
Pages 6-11Growth
Page 12-13Overflow
Page 14Disclaimers

Income Portfolio

ACTION FOR			PORTFOLIO DETAILS				Value as of date: 2/21/2014							
Action Date	Action	Symbol	Action Price	# of Shares	Action Value	Symbol	Stop Loss as of 2/15	Description	Start Price	End Price	# of Shares	Current Value	Percent of Total	
4-Dec	sell	AGG	106.68	537	57,277								0.0%	
9-Dec	buy	AGG	106.76	537	57,340									
9-Dec	buy	PCY	26.86	2,120	56,953									
these two will move the portfolio to fully invested														
26-Dec	sell	AGG	106.39	537	57,121	JNK	40.90		40.57	41.19	286.4	11,797.64	10.2%	
27-Jan	buy	JNK	40.57	285	11,572								0.0%	
this will be about 10% of portfolio														
31-Jan	sell	PCY	26.78	2,138	57,249									
										Money Market	1.00	103,473	103,473.00	89.8%
										Total Valuation=			115,270.64	100.0%

WEEKLY REVIEW

2/24 JNK still rallying. No changes.

2/18 Increased the stop price on JNK.

2/10 No changes.

2/3 PCY stopped out. JNK may be next. Bond market getting a bit bifurcated or trifurcated.

1/27 PCY getting close to its stop level. Buy JNK as noted above.

1/20 No changes.

1/13 No changes.

	2010	2011	2012	2013	ytd 2014	Incptn
ETF Income Portfolio	4.8%	3.6	4.8	1.1	0.2	15.3
Aggregate Bond	6.4%	7.7	3.9	-2.2	1.3	18.0

This shows the total returns of previous years, year to date (ytd), and from inception (incptn). It also shows standard deviation (SD).

ETF Income Database and Ranking to 8/30/13 (pending change)

<i>Fund Name</i>	<i>Symbol</i>	<i>Style</i>	<i>12m</i>	<i>9m</i>	<i>6m</i>	<i>3m</i>	<i>1m</i>	<i>V</i>	<i>NAV</i>	<i>Rank</i>
iShares 1-3yr Trsry	SHY	BS	0.03	0.03	-0.07	-0.03	-0.10	0.08	84.28	*****
Vngrd ShrtTrm Bond	BSV	BS	-0.19	-0.45	-0.60	-0.38	-0.27	0.23	79.96	*****
iShares 3-7yr Trsry	IEI	BI	-2.51	-2.67	-2.49	-1.82	-0.77	0.51	119.88	****
iShares Agg Bond	AGG	BI	-2.85	-3.32	-3.05	-2.12	-0.83	0.61	106.01	****
iShares Inter Bond	MBB	BI	-3.09	-2.81	-2.91	-1.77	-0.67	0.43	104.17	****
iShares Inter Gov	GVI	BI	-1.51	-2.04	-1.92	-1.35	-0.64	0.46	109.11	****
Wtree Dryfs Chns Yuan	CYB	BF	4.62	2.26	2.23	0.54	0.42	0.42	26.16	****
Currency Euro	FXE	BF	4.69	1.36	1.04	1.60	-0.68	1.85	130.84	***
iShares 10-20yr Trsry	TLH	BL	-8.69	-8.69	-6.33	-4.80	-0.97	1.55	123.42	**
iShares 7-10yr Trsry	IEF	BI	-6.40	-6.61	-5.56	-4.27	-1.42	1.08	100.26	**
iShares High Yld	HYG	BH	5.38	2.88	0.18	-0.17	-1.27	1.56	90.87	**
iShares Intrntl Tbond	IGOV	BW	-1.59	-3.73	-1.85	-0.50	-0.73	1.54	97.93	**
iShares Long Corp Bond	LQD	BL	-2.90	-4.84	-4.30	-3.17	-1.00	1.39	112.68	**
iShares Trsry Inflt	TIP	BI	-7.29	-8.84	-7.78	-4.71	-1.83	1.18	110.64	**
PS 1-30 Ldr Trsry	PLW	BI	-8.64	-8.31	-5.99	-4.31	-0.96	1.45	29.88	**
PS Bld America	BAB	BI	-5.98	-7.40	-8.54	-7.83	-1.41	1.59	27.14	**
PS DB Dollar Bearish	UDN	BF	-1.27	-2.51	0.04	1.65	-0.49	1.29	26.42	**
PS DB Dollar Bullish	UUP	BF	-0.49	1.23	-0.80	-1.86	0.41	1.28	22.19	**
PS DB G10 Currency	DBV	BF	-0.76	-4.00	-7.09	-6.64	-2.44	1.72	24.75	**
PS Fdmntl Hi Yield Corp	PHB	BH	3.25	1.31	-0.10	-0.99	-0.88	1.23	18.71	**
PS Insr CA Muni	PWZ	BI	-6.48	-9.21	-8.53	-7.65	-2.25	1.29	22.72	**
PS Insr NY Muni	PZT	BI	-9.02	-11.54	-10.28	-8.91	-2.61	1.51	21.68	**
PS Prfd	PGX	BF	-0.95	-2.38	-4.30	-4.81	-1.65	1.18	13.68	**
SPDR High Yield	JNK	BH	5.27	2.46	0.00	-0.75	-1.03	1.56	39.46	**
SPDR Intrntl TBond	BWX	BW	-4.13	-5.75	-2.63	-0.53	-1.15	1.48	56.79	**
Vngrd Intrmdt Bond	BND	BI	-2.94	-3.28	-2.96	-2.12	-0.86	0.62	79.99	**
Wtree Dryfs Comdty Cur	CCX	BF	-6.19	-7.08	-8.09	-3.79	-2.15	1.55	19.55	**
Wtree Dryfs Emrg Crrncy	CEW	BF	-3.44	-5.57	-6.78	-3.77	-2.82	1.44	19.65	**
iShares 20+ yr Trsry	TLT	BL	-14.79	-13.35	-9.34	-6.72	-1.34	2.46	105.71	**
PS Emrg Mrkt Svrgn Debt	PCY	BW	-8.80	-13.37	-11.06	-7.86	-3.36	2.67	26.24	**
PS Insr Natl Muni	PZA	BI	-8.56	-11.75	-10.49	-9.01	-1.56	1.56	22.52	**
Wtree Dryfs Brazil Real	BZF	BF	-10.67	-7.36	-15.28	-9.16	-3.29	2.37	16.75	**
Wtree Emrg Mrkt Lcl Debt	ELD	BF	-7.81	-11.12	-12.85	-8.94	-4.35	2.09	45.45	**
Wtree Dryfs Indn Rupee	ICN	BF	-11.22	-13.71	-15.13	-13.34	-5.23	2.58	18.12	*

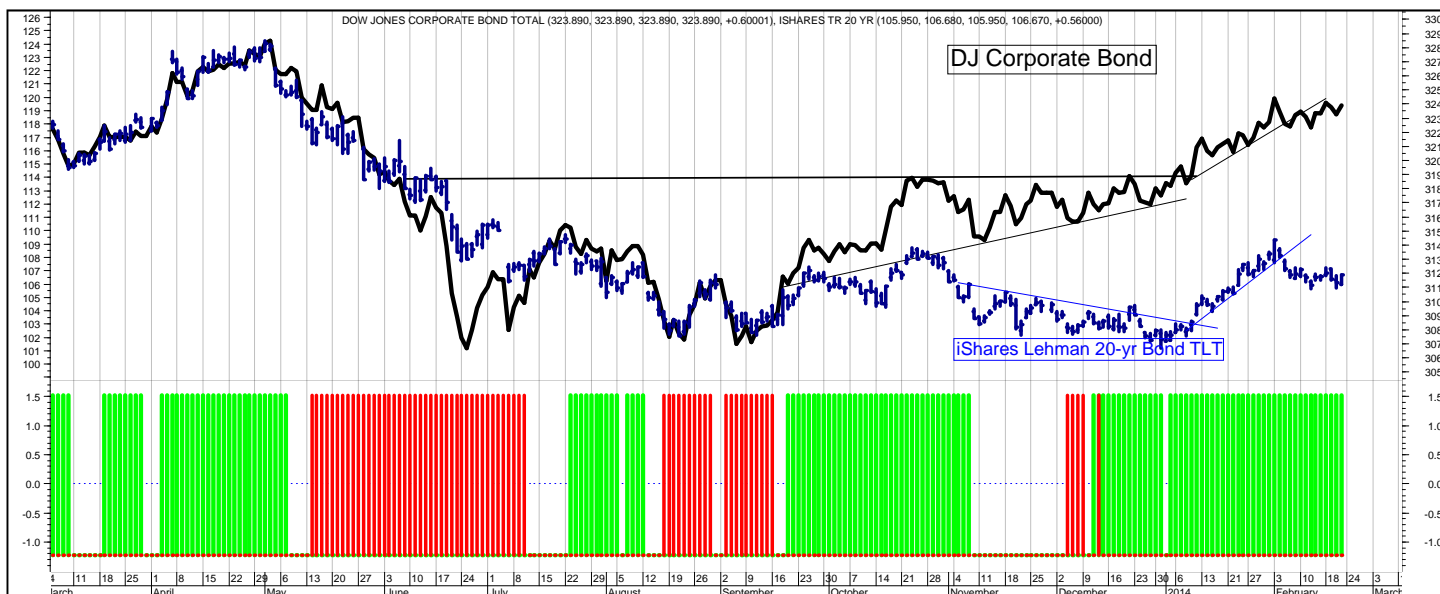
This is the ETF Income Database and Ranking. It shows performance over the last 12, 9, 6, 3, and 1 months through the previous month's end. V is Volatility. NAV is price. CS is Comet Strength (not shown). C is Comet (not shown), which is an ETF's risk-adjusted performance; the higher the better. V, CS, and C are proprietary tools. Rank column shows the number of comets.

ETF LEGEND for pages 3 (Bond), and 7, 8, 9, and 10 (Equity):

Column headings: The first column shows the ETF name, the second column shows its symbol. The third column shows the ETF Style. The first letter is always either B (Bond) or E (Equity) or H (Hybrid). The next letter(s) is the style. So, BS-bond short, BI-bond intermediate, BL-bond long, BF-flexible, BW-world, BH-high yield. And for Equity, EA-equity aggressive, EC-equity contrary, EG-equity gold (precious metals), ESC-small cap, EMC-mid cap, ELC-large cap, EW-world, EGI-growth/income, ERE-real estate, EV-value. Columns 4-8 show percentage returns for the periods shown (12 months, 9, 6, 3, and 1 month). Column 9 is V (volatility); a measure of risk; the lower the V, the less risk. Column 10 is the NAV. Column 11 is the C (comet) ranking. C is the risk-adjusted (V) relative performance (CS). The higher the C indicates the most return for the amount of risk taken.

Generally, our ETF strategy is to own the top ranked ETFs (shown in green) and avoid or short the lower ranked ETFs (shown in red).

SLM Bond Timing Model



The SLM Bond Timing Model is based on the expected direction of the Corporate Bond market. The green bars are bullish (expect higher prices and lower yields) and the red bars are bearish (expect lower prices and higher yields). White spaces indicate that the previous signal is still in effect.

WEEKLY REVIEW

2/24 No changes.

2/18 Consolidation phase. With the economy stronger than expected, even accounting for the horrific winter weather, can't see bonds rallying further.

2/10 The bond market has broke its uptrend from what could be a valid breakout zone. This is drawn on the chart above by the last trend lines. Will watch for subsequent action and economic news to decide whether to buy on the pullback or continue to stand aside.

2/3 The corporate and Treasury bond markets are doing better than foreign and junk. Unfortunately, don't own any. I was expecting more weakness, rather than strength.

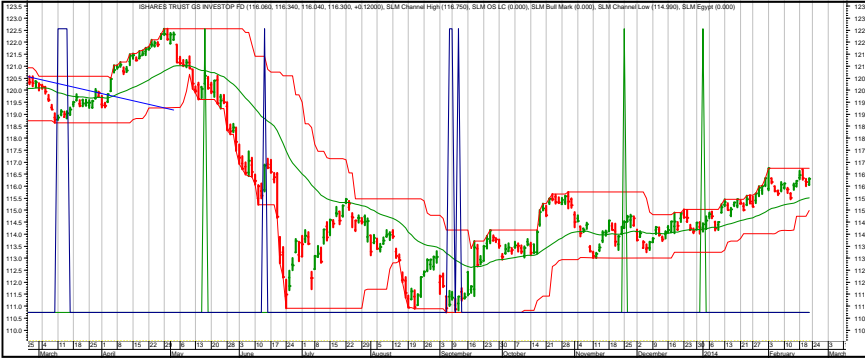
1/27 No changes.

1/20 No changes.

1/13 Bond prices look like they've broken to the upside (lower rates). If we get a pullback, I expect to reenter.

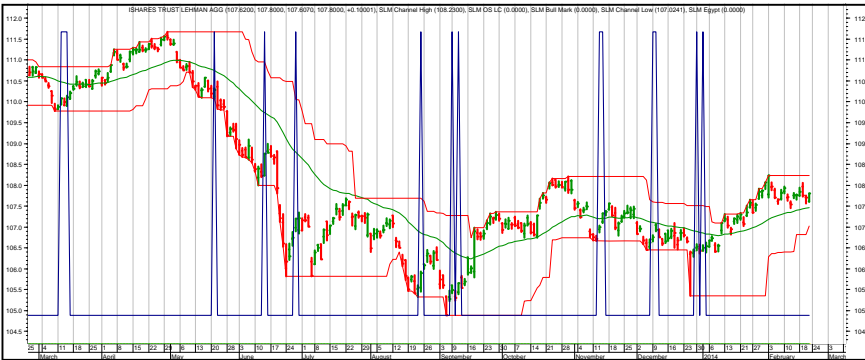
1/6 Corporates rallied back to resistance. As you can see on the chart above, the "spring" is tightening. Which way will it go? Best estimate is downward for prices and up for yields.

Income Charts (DAILY)



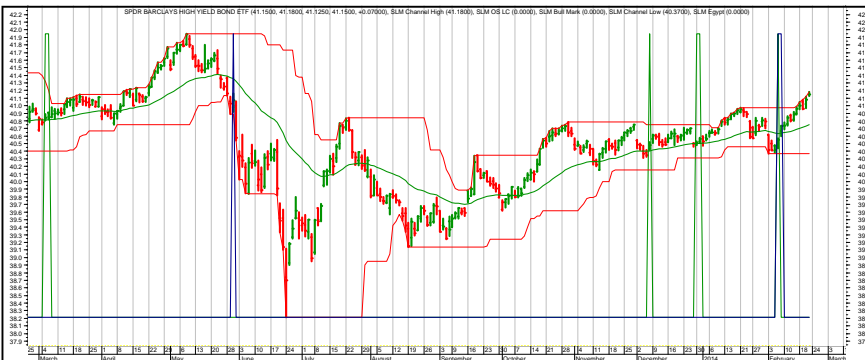
LQD—Investment Grade Corporate

2/24/ No changes.
 2/18 No changes.
 2/10 No changes.
 2/3 No changes.
 1/27 Watching for a pullback.
 1/20 No changes.
 1/13 No changes.
 1/6 No changes.



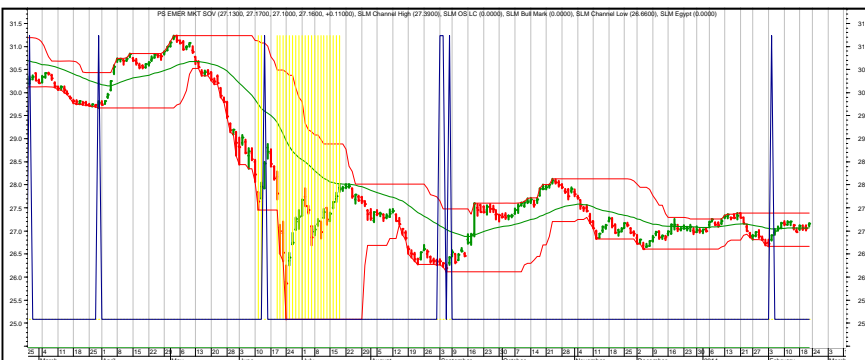
AGG—Aggregate Bond Market

2/24 No changes.
 2/18 No changes.
 2/10 No changes.
 2/3 No changes.
 1/27 Watching for a pullback.
 1/20 No changes.
 1/13 No changes.
 1/6 No changes.



JNK—hi-yield bonds

2/24 No changes.
 2/18 Since JNK is the only bond ETF notching recovery highs here of the 4 shown, I've put a very tight stop on the position. See page 2.
 2/10 No changes.
 2/3 No changes.
 1/27 Will nibble on JNK on its pullback.



PCY—International Bonds

2/24 No changes.
 2/18 No changes.
 2/10 The last blue spike is the 'buy' from last week's comment. I am standing aside, however.
 2/3 Watch for PCY to go below December lows and then possible reversal.
 1/27 Watch the stop level.

Each chart shows daily (or weekly if noted in page title at top) prices, a moving average (smoothed green line on price portion), and blue or green spikes. The spikes show potential buy signals. The red lines are price channels. The charts do not show sell signals.

Growth Portfolio (changed as of 12/10/12, 9/23/13)

ACTION FOR			PORTFOLIO DETAILS			Value as of date:				2/21/2014			
Action Date	Action	Symbol	Action Price	# of Shares	Action Value	Symbol	Stop Loss	Description	Start Price	Ending Price	# of Shares	Current Value	Percent of Total
13-Feb	buy	EEM	39.13	539.00	21,101	World Growth							
13-Feb	buy	EFA	66.28	318.00	21,087	EEM		Emrg Mrkt	39.13	39.44	539.000	21,258.16	15.0%
13-Feb	buy	IWM	113.68	185.00	21,041	EFA		Euro Asia	66.28	66.96	318.000	21,293.28	15.0%
13-Feb	buy	QQQ	89.54	235.00	21,052	IWM		Rusl 2000	113.68	115.73	185.000	21,410.05	15.1%
13-Feb	buy	SPY	182.85	115.00	21,038	QQQ		Nsdq 100	89.54	89.94	235.000	21,135.90	14.9%
13-Feb	buy	DFE	60.48	93.00	5,635	SPY		S&P 500	182.85	183.93	115.000	21,151.95	14.9%
13-Feb	buy	PXN	8.34	674.00	5,631	C-lect 5							
13-Feb	buy	GULF	22.09	254.00	5,621	DFE			60.48	61.28	93.000	5,699.04	4.0%
13-Feb	buy	PJP	56.88	99.00	5,641	PXN			8.34	8.40	674.000	5,661.60	4.0%
13-Feb	buy	PPA	31.71	177.00	5,623	GULF			22.09	22.52	254.000	5,720.08	4.0%
to be liquidated		PXN				PJP			56.88	59.40	99.000	5,880.60	4.1%
24-Feb	buy	UNG		215.00	about 4%	PPA			31.71	32.41	177.000	5,736.57	4.0%
Two potential ways to sell: stop loss about 5% lower or timing model signals sell Two potential ways to buy: "lower-risk window" may open or timing model signals buy.													
C-lect Short													
(under construction)													
Cash from short													
									1.00	-	-	0.0%	
Money Market									1.00	7,174	7,174.00	5.0%	
									Total Valuation=		142,121.23	100.0%	

WEEKLY REVIEW

2/24 PXN will be liquidated this week and was deleted from the database. UNG is the new buy.

2/18 Moved back into positions last week as noted above. The stop is about 5% away.

2/10 The portfolio is in cash, but see page 7 for the new C-lect 5 recommendation to buy/sell. Currently the C-lect 5 timing is based on the World Growth Model timing. It is on a sell, so we are fully in cash. I may do some further testing to see if direct timing on the C-lect 5 model may provide more timely entry and exit points in order to boost profits.

2/3 C-lect 5 has a new buy/sell as noted above. Stop loss on portfolio has narrowed further to 6%. The timing model itself, however, is much closer to a sell signal. If one is triggered between issues, we will send an emailed hotline. You should have received an email from us last Wednesday. If you didn't, send me an email at SMcKee@InvestmentST.com to update yours. The "window to buy" is open if you are inclined to add to positions or start your investing. I am standing pat for now.

	2010	2011	2012	2013	ytd 2014	Incptn
ETF Growth Portfolio	8.1%	6.9	-2.1	25.7	0.0	42.1
World Growth Index	17.2%	-4.1	15.1	30.5	0.3	69.3

The ETF Growth Portfolio changed as of 12/10/12 and again 9/23/13. It is following the new World Growth Model (WGM), which uses the same 5 etfs (EEM, EFA, IWM, QQQ, SPY) as the World Growth Index (WGI). The difference between the two is WGM uses timing and WGI is always fully invested and WGI is rebalanced to 20% in each position daily (this accounts for the different returns when WGM is invested and held). Based on the successful back testing strategy, C-lect 5 was added to the portfolio. Returns are of previous years (to last Friday in year), year to date (ytd) (from last Friday in previous year), and from inception (incptn). It also shows standard deviation (SD). The green highlight (2013, 2014) is to highlight the aforementioned changes.

ETF Rankings by C to previous week's end

Fund Name	Symbol	Style	C
Wtree Middle East Div	GULF	EW	18.60
PS Dynmc Pharma	PJP	EA	13.14
Wtree Eur SC Div	DFE	EW	11.02
PS Aerospace & Def	PPA	EA	8.96
US Natural Gas	UNG	EA	8.63
PS Dynmc Biotech	PBE	EA	8.44
PS Dynmc Healthcare	PTH	EA	7.88
Vngrd Health	VHT	EA	7.70
PS QQQ	QQQ	ELC	7.26
Vngrd Tech	VGT	EA	7.04
Select SPDR Health	XLV	EA	6.87
PS Dynmc Software	PSJ	EA	6.84
PS NASDAQ Intrnt	PNQI	EA	6.17
PS S&P SmICap Hlth Care	PSCH	EA	5.90
Guggnhm Shipping	SEA	EA	5.49
Select SPDR Technlgy	XLK	EA	5.31
Select SPDR Indl	XLI	EA	5.31
PS Fincl Pfd	PGF	EGI	5.23
PS Dynmc Lrg Cap Grth	PWB	ELC	5.19
PS Dynmc Media	PBS	EA	5.05
PS Gbl Clean Enrgy	PBD	EW	4.95
PS Dynmc Networking	PXQ	EA	4.87
PS Dynmc Semicndctr	PSI	EA	4.82
PS Dyn Mrkt	PWC	ELC	4.74
iShares DJ US Home Constr.	ITB	EA	4.71
PS S&P SmICap Industrls	PSCI	EA	4.53
SPDR S&P Regional Banking	KRE	EA	4.51
iShares Prfrd	PFF	EGI	4.44
PS Dynmc Fncl	PFI	EA	4.17
iShares Germany Indx	EWG	EW	4.11
PS Dynmc Bldg Cnstrctn	PKB	EA	4.06
PS S&P SmICap Cnsmr Dis	PSCD	EA	4.03
PS Gbl Water	PIO	EW	3.96
Guggnhm RJ All	RYJ	ELC	3.87
Vngrd Grth	VUG	ELC	3.80
PS Water Resources	PHO	EA	3.74
iShares Italy Indx	EWI	EW	3.74
iShares Russell 1000 Grwth Indx	IWF	ELC	3.73
PS Cleantech	PZD	EA	3.71
iShares Spain	EW P	EW	3.66

This page and the next three show the equity ETF database rankings from high to low based on C. C is Comet, which is the risk-adjusted relative performance; the higher the C ranking, the better. Comets, not stars, because comets come into and out of prominence over time. We want the metaphor to match reality.

The first column shows the name. The second column shows the symbol. The third column shows the style; it begins with E for Equity and then the style (A is aggressive, W is world, WR is world regional, SC is small cap, MC is mid cap, LC is large cap, GI is growth/income, V is value). The fourth column shows the C level.

ETF Rankings by C to previous week's end

PS DB Agriculture	DBA	EA	3.59
PS S&P SmICap Mtrls	PSCM	EA	3.55
Guggnhm Gbl Wtr	CGW	EW	3.46
PS DWA Dvlpd Mrkt T Ldrs	PIZ	ELC	3.33
PS Dynmc Utilities	PUI	EA	3.26
SPDR S&P Metals & Mining	XME	EA	3.09
Vngrd Extnd 4500	VXF	ELC	3.06
Guggnhm Solar	TAN	EA	3.06
PS Gbl Listd Prvt Eqty	PSP	EW	3.01
PS DWA Tech Ldr	PDP	ELC	2.92
PS Zacks Micro Cap	PZI	ESC	2.85
PS S&P SmICap Info Tech	PSCT	EA	2.84
PS Dynmc Basic Matr	PYZ	EA	2.80
Select SPDR Cnsmr Disc	XLY	EA	2.75
Market Vectors Semiconductor	SMH	EA	2.72
Wtree S&P 500	EPS	ELC	2.69
Vngrd Small Cap Grth	VBK	ESC	2.64
SPDR S&P Bank	KBE	EA	2.63
Vngrd Small Cap Value	VBR	ESC	2.62
Guggnhm Insdr Sent	NFO	EMC	2.55
Guggnhm Spin Off	CSD	EMC	2.55
Vngrd MidCap Val	VO	EMC	2.53
Vngrd Materials	VAW	EA	2.52
Vngrd Consmr Dis	VCR	EA	2.50
Wtree MidCap Earn	EZM	EMC	2.49
Vngrd Utilities	VPU	EA	2.34
Vngrd Small Cap	VB	ESC	2.27
Select SPDR Matr	XLB	EA	2.22
Wtree Ttl Earn	EXT	ELC	2.21
Vngrd TTL Stock	VTI	ELC	2.19
iShares Core S&P 500	IVV	ELC	2.11
Vngrd Large Cap	VV	ELC	2.11
Select SPDR Utilities	XLU	EA	2.08
SPDR S&P 500	SPY	ELC	2.08
PS Dynmc Technology	PTF	EA	1.91
iShares Russel MidVal	IWS	EMC	1.91
SPDR S&P Homebuilders	XHB	EA	1.91
PS Buyback Achievers	PKW	EGI	1.83
Alerian MLP	AMLP	EGI	1.81
Select SPDR Financls	XLF	EA	1.76
PS Dyn MagniQuant	PIQ	ELC	1.75
iShares S&P 100 Indx	OEF	ELC	1.69
iShares Russell 2000	IWM	ESC	1.63
Wtree Intrntl SC Div	DLS	EW	1.57
PS WilderHill Prgsv Enrgy	PUW	EA	1.57

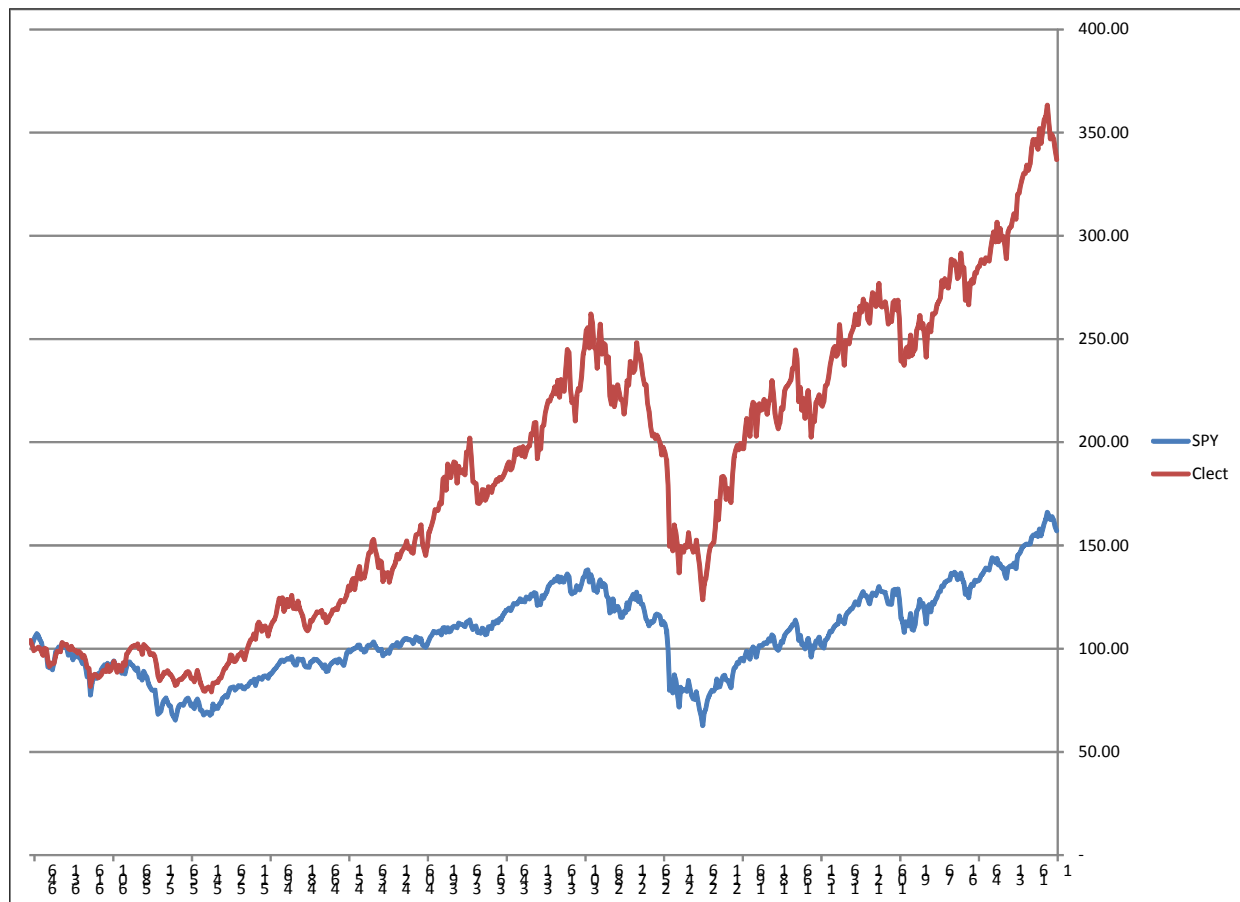
ETF Rankings by C to previous week's end

iShares Core S&P Mid Cap	IJH	EMC	1.53
PS S&P 500 BuyWrite	PBP	ELC	1.52
SPDR DJ Industrials	DIA	ELC	1.49
SPDR Mid Cap Trust	MDY	EMC	1.47
iShares EMU Indx	EZU	EW	1.36
Guggnhm China Sml	HAO	EWR	1.32
PS Dynmc Lrg Cap Value	PWV	ELC	1.31
PS S&P SmlCap Utilities	PSCU	EA	1.29
PS FTSE RAFI US 1500 Sml-Mid	PRFZ	EMC	1.28
Vngrd Fincl Srv	VFH	EA	1.16
Vngrd European Indx	VGK	EW	1.10
iShares REIT	IYR	ERE	1.07
PS BLDR Europe 100 ADR	ADRU	EW	1.03
iShares Russell 1000 Value Indx	IWD	ELC	1.00
iShares Russell 2000 Value Indx	IWN	ESC	0.98
iShares Europe 350	IEV	EW	0.95
PS Dynmc Energy Explor	PXE	EA	0.85
PS Dynmc Energy	PXI	EA	0.84
Guggnhm Timber	CUT	EA	0.77
Wtree MidCap Div	DON	EMC	0.76
Vngrd REIT	VNQ	ERE	0.73
iShares Telecomm	IYZ	EA	0.71
Guggnhm MidCap Core	CZA	EMC	0.69
Wtree Sml Cap Div	DES	ESC	0.67
PS WilderHill Cln Enrgy	PBW	EA	0.65
Wtree Japan Hedge Eqty	DXJ	EC	0.65
iShares DJ Slct Div	DVY	EGI	0.59
SPDR Euro Stoxx 50	FEZ	EW	0.58
Wtree Intrntl Div Ex Fincl	DOO	EW	0.58
PS S&P SmlCap Fincl	PSCF	EA	0.55
PS Hi Yld Eqty Div	PEY	EGI	0.53
PS Dynmc Leisure & Enter	PEJ	EA	0.51
iShares Cohen&Str REIT	ICF	ERE	0.51
Wtree LrgCap Div	DLN	ELC	0.43
SPDR Wlsh REIT	RWR	ERE	0.36
Wtree Div Ex Fincl	DTN	ELC	0.32
PS Gldn Drgn USX China	PGJ	EW	0.31
Vngrd Div Apprctn	VIG	EGI	0.30
Wtree Intrntl MC Div	DIM	EW	0.24
PS DB Oil	DBO	EA	0.19
Select SPDR Div	SDY	EGI	0.09
Guggnhm Intrntl A Incm	HGI	EW	0.09
Select SPDR Cnsmr Stpl	XLP	EA	0.07
Vngrd Consmr Stpls	VDC	EA	0.03
PS BLDR Dvlpd Mrkt 100 ADR	ADRD	EW	0.02

ETF Rankings by C to previous week's end

PS US REIT	PSR	ERE	-0.01
PS DB Energy	DBE	EA	-0.03
Guggnhm Multi Ast In	CVY	EV	-0.07
W tree DEFA Eqty Incm	DTH	EW	-0.07
PS FTSE RAFI Dvlp Mrkt xUSA	PXF	EW	-0.07
SPDR S&P Retail	XRT	EA	-0.08
W tree Eqty Income	DHS	EGI	-0.11
SPDR DJ Gbl Titans	DGT	EW	-0.11
PS Dividend Achievers	PFM	EGI	-0.17
PS S&P 500 Low Volatility Portfolio	SPLV	ELC	-0.20
W tree DEFA	DWM	EW	-0.24
W tree Intrntl LC Div	DOL	EW	-0.45
PS Intrntl Dvdnd	PID	EW	-0.45
PS DB Commodity	DBC	EA	-0.46
iShares EAFE Indx	EFA	EW	-0.47
iShares Slct Div	IDV	ELC	-0.52
PS Dynmc Consmr Staples	PSL	EA	-0.55
PS S&P SmICap Cnsmr Stpl	PSCC	EA	-0.56
Guggnhm Dfnsv Eqty	DEF	EV	-0.59
W tree India	EPI	EW R	-0.61
Vngrd Europe Pacific	VEA	EW	-0.61
PS FTSE RAFI Dvlp Mrkt xUSA SmI	PDN	EW	-0.69
iShares Canada	EW C	EW	-0.74
PS Gbl Agriculture	PAGG	EA	-0.74
Select SPDR Enrgy	XLE	EA	-0.84
Vngrd TTL Intrntl Stk	VXUS	EW	-0.89
PS Dynmc Food & Bev	PBJ	EA	-1.03
PS Dynmc Consmr Discr	PEZ	EA	-1.06
W tree Gbl Eqty Incm	DEW	EW	-1.14
Guggnhm Gbl Div	LVL	EW	-1.20
W tree Japan SC Div	DFJ	EW R	-1.25
Guggnhm Candn Enrg Incm	ENY	EW R	-1.25
Pro Shares Short S&P 500	SH	EC	-1.36
W tree Intrntl Utilities	DBU	EW	-1.39
PS Dynmc Oil & Gas Svcs	PXJ	EA	-1.44
Market Vectors Oil Services	OIH	EA	-1.44
PS India	PIN	EW	-1.44
Guggnhm China All	YAO	EW R	-1.48
iShares Taiwan Indx	EW T	EW	-1.58
PS DB Base Metals	DBB	EG	-1.62
iShares Japan	EW J	EW	-1.63
US Oil Fund	USO	EA	-1.72
W tree World Ex US Grth	DNL	EW	-1.81
iShares Hong Kong Indx	EW H	EW	-1.88
iShares Mexico	EW W	EW	-1.92
PS Dynmc Retail	PMR	EA	-1.97
PS S&P SmICap Energy	PSCE	EA	-2.11
iShares Pacific ex Jpn	EPP	EW	-2.25
iShares Gold	IAU	EG	-2.31
SPDR Gold	GLD	EG	-2.36
iShares Malaysia Indx	EW M	EW	-2.37
SPDR S&P Oil & Gas Expl. & Prod.	XOP	EA	-2.47
PS BLDR Asia 50 ADR	ADRA	EW	-2.54
PS Emrg Mrkt Infrastrctr	PXR	EW	-2.54
iShares Singapore	EW S	EW	-2.63
Pro Shares Short Russell 2000	RWM	ESC	-2.67
PS DB Gold	DGL	EG	-2.72
PS FTSE RAFI Asia Pac xJpn	PAF	EW	-2.75
W tree Intrntl REIT	DRW	ERE	-2.78
Guggnhm Frntr	FRN	EW	-2.80
iShares Australia	EW A	EW	-2.82
iShares South Korea Indx	EW Y	EW	-3.01
Vngrd Emrg Mrkt	VWO	EW	-3.18

C-lect 5 Backtesting Chart w/out timing (reiteration)



The chart shows the result from evolving through the top 5 ETFs out of a basket of 214 ETFs. No timing was employed.

As you can see, the idea of staying with the risk-adjusted relative performance leaders works over time. \$100,000 of a buy/hold of SPY grew to about \$160,000, while a C-lect 5 portfolio grew from \$100,000 to nearly \$350,000.

Overflow from Page 1, Definitions, and Newsletter Updates

(Continued from page 1) **REVIEW**

correction in January, the market has reversed course and is heading higher. Again, however, the background is negative and the rally is setting up further negatives.

The bottom line is simply to hang on and watch the stop levels carefully. I've also noted that the timing model may signal a sell before the stop is hit.

In the meantime, see the portfolios for more information.

Just to clarify a couple of terms that I use regularly.

Short-term is days to weeks.

Intermediate-term is weeks to months.

Long-term is months to years.

Cyclical is 1-5 years.

Secular is 5 years to decades.

Bull market is a series of higher highs and higher lows.

Bear market is a series of lower lows and lower highs.

Neutral market is sideways without a discernible pattern.

Oddly, bull and bear markets may occur simultaneously, but only over different time periods. For example, we may be in a secular bear market, but there are cyclical bull and bear markets within that.

Closing stops are "mental". I look at the position at quarter to the close. If it is trading below the stop (or above if short), then I act with the assumption the security will trigger that closing stop on that day. I sell (or cover) at the close that day.

Portfolio stops for the World Growth Model are internally maintained; they are based on the World Growth Index, not the individual ETFs. Stops will be emailed when close or if triggered.

2/24 Couple of database changes. Deleted PXN that suspended trading. Deleted another that changed symbols, but was not very liquid. Deleted VXX too volatile (doesn't trend well).

2/18 Still working on the World Income Model.

2/10 No changes.

2/3 Made an ETF database change. Deleted a low volume ETF and added a larger volume ETF.

1/27 Work continues on that combined timing model (trends and contraries). See comment/letter 12/2.

1/21 No changes.

1/13 No updates.

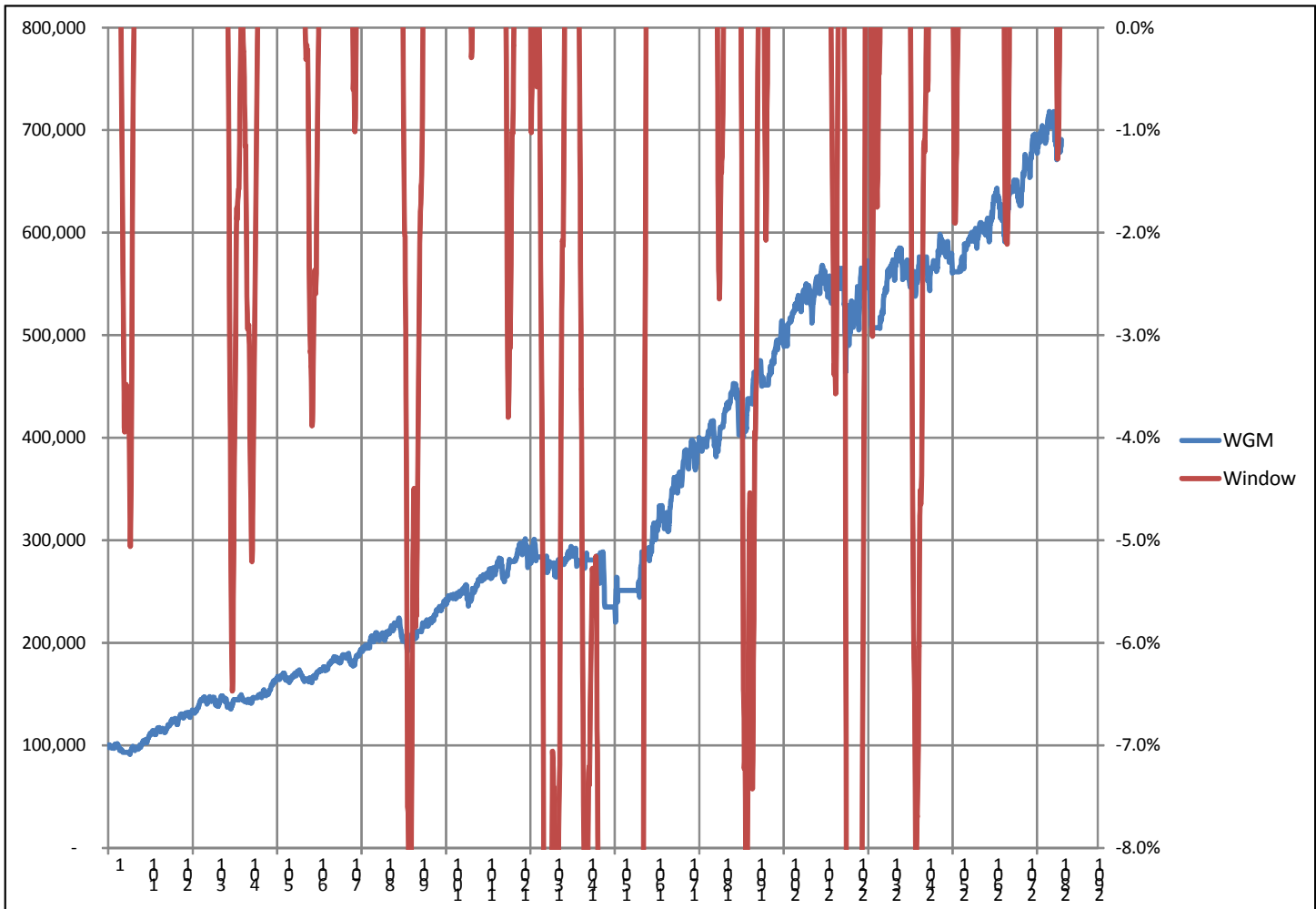
1/6 No changes.

12/30 Happy New Year.

12/23 Correction to 10/21 comment [changed to WGI]. No other changes.

12/16 No changes.

Window to Buy (reiteration)



The chart above shows the World Growth Model (WGM-blue line) and the Window to buy (Window-red spikes). The chart covers the period from 12/5/2002 through the present. The vertical lines mark off about 1 year increments.

The Window to Buy is to answer the question if I missed the initial timing model buy signal, then when do I either take my initial position or increase my position with additional money?

Being risk-averse, I wanted a way to answer this sensibly, which is try to buy on measured corrections, rather than chase the market higher and higher. In a strong, early bull market, the problem is this approach may miss the early gains, unless you are already following the World Growth Model strategy. But the rest of the time, the Window is a solid approach to managing portfolio risk.

The base line for the Window is 0%. When the WGM is above that level, the window is closed. It doesn't mean the market can't or won't go higher. It just means that the downside risk to the potential stop or sell signal is too large. When the WGM drops enough, then the window to buy opens. This may be mitigated by early stage bull markets.

As you can see, the window to buy is open right now. If the market recovers to new highs, the window will close again. If the market continues lower, either the sell stop will be triggered or the timing model will signal a sell. The timing model sell signal overrides the window to buy.

What normally happens in up markets is the timing model remains on a buy, while the market corrects and opens the window to buy. It then reverses and heads higher with more investment on board.

Descriptions & Disclosures

PORTFOLIO DESCRIPTIONS (pages 2 and 6)

Our guiding goal is to provide the most return with the least risk consistently over time through bull and bear markets.

Income Portfolio, page 2: Uses a proprietary selection methodology on all of the monitored bond-oriented ETFs to pick the top ETFs. I then use a proprietary timing model to decide whether to buy, sell, hold, or avoid. From time to time, timing considerations may take precedence over selections; in other words, we may own lower ranked funds because of anticipated timing changes.

Growth Portfolio, page 6: As of 12/10/12, it is based on the World Growth Index (WGI), which is made up of a static fully invested 20% in each of five ETFs (EEM, EFA, IWM, QQQ, SPY). The Portfolio will buy and sell the WGI based on proprietary timing signals. On 9/23/13, the new C-lect 5 is also part of this portfolio. It too uses timing.

Both portfolios were started on 1/1/10 with \$100,000. As mentioned, the Growth Portfolio strategy was changed on 12/10/12 to the World Growth Model and again on 9/23/13 to incorporate the C-lect 5 model.

Portfolio changes will usually be made at the close on Monday, unless otherwise noted in any emailed hotline update or triggered stop orders. Issues are normally posted on Mondays by 1:35pm cst (Tuesday if Monday is a holiday, defined as market closed).

Portfolios are updated through the Friday close the week before.

Dividends are reinvested in additional shares.

Commissions of \$10 per trade are applied. Interest is currently zero for the money market (cash) position.

SUBSCRIPTIONS: To receive *ETF Selections & Timing*, you may subscribe in one of three ways. You may subscribe on the web site InvestmentST.com using PayPal or call 1-800-800-6563 for Amex, Visa, MasterCard, or Discover orders or send a check to the address on the front page. Subscriptions may be tax deductible.

The recurring monthly subscription is \$24.00. An annual subscription is \$240.00. Subscribers receive this weekly eNewsletter. There is no mailed issue. Subscribers retrieve the current weekly issue at the web site InvestmentST.com by logging in with a user name and password. There may also be emailed Hotline reports sent between issues.

Unless otherwise noted, the weekly eNewsletter is posted by 1:35 PM central time each Monday, except for holidays (closed stock market) and then on Tuesday. It may contain actionable, specific buy or sell advice to take that day at the Monday (or Tuesday) close in each portfolio. We may also use stop orders. For stops, check the ETF at quarter to the close. If it is below (or above) a stop level, assume it will close there and act on that. Portfolio data will be updated through the previous Friday's close. Fund symbols, rather than names, are the official identification used for activity.

GUARANTEE: Subscriptions may be cancelled at any time. Annual subscriptions are refundable for the weekly term remaining with a four-week minimum charge, using a 52-week count. Monthly subscriptions just expire.

PUBLISHER: Watercourse Way Holdings, LLC publishes this newsletter.

REPRINTS: This eNewsletter is intended for subscribers only, reprints are not permitted.

DISCLAIMER: The information contained herein is assembled from sources who are believed reliable, but the accuracy of data or advice cannot be guaranteed. Past performance does not guarantee future performance. Portfolio values include a commission of \$10/trade, dividend reinvestment for additional shares, and short-term redemption charges. The World Growth Index and World Income Index are equity and bond indexes and may or may not be useful in comparing returns. Security values fluctuate. Information is provided without consideration for a subscriber's personal situation. Watercourse Way Holdings, LLC its members and associates may or may not invest identically to or at the same time as portfolios or activity shown herein.

COPYRIGHT: Copyright, 2009-14, Watercourse Way Holdings, LLC. All rights reserved.