

ETF Selections & Timing

Watercourse Way Holdings, LLC

P.O. Box 830396
Richardson, TX 75083-0396
972-680-2366

InvestmentST.com

February 11, 2013 (data through previous Friday close)

Volume 4
Issue 6

Built In Correction

Bullish sentiment is increasing along with the rising stock market. At some point, the bullishness becomes excessive, which is then a trigger for a correction. What happens is everyone who wants to buy has bought. Without more buyers, then the sellers

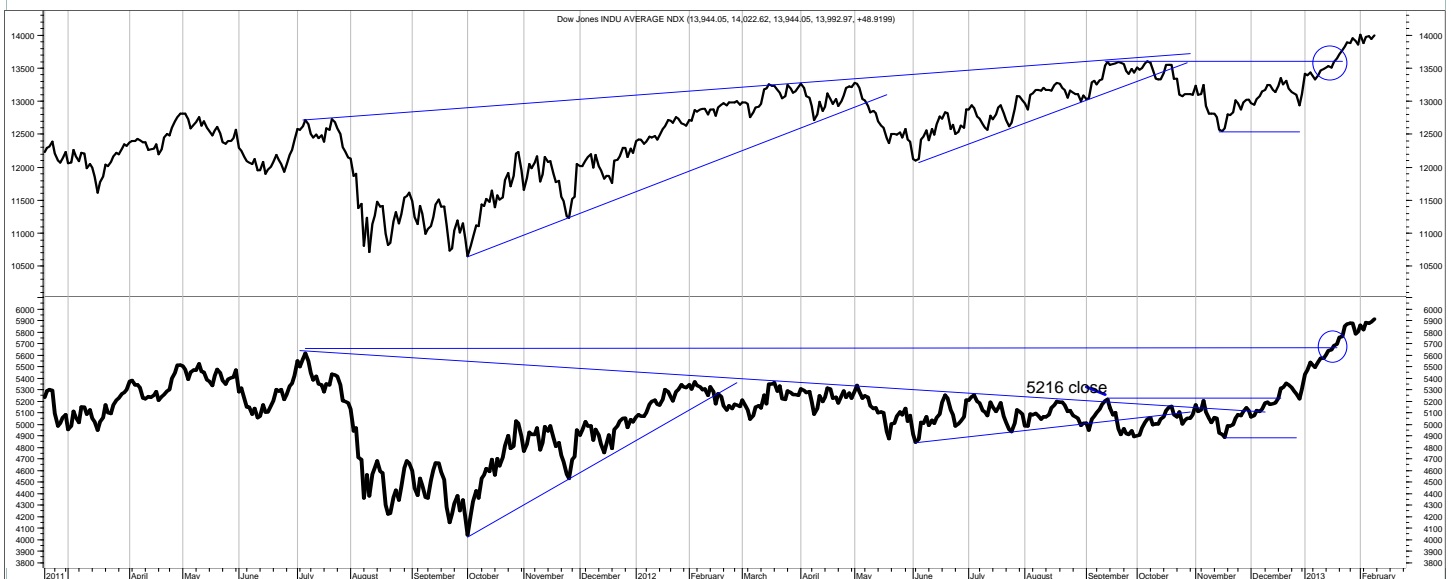
dominate, pushing prices lower. After all, behind every trade, there are always two parties, the buyer and the seller. When one side increases, the other side decreases, thus pushing around stock prices. Currently the percentage of bullish advisors is nearing its peak that preceded

the correction last year.

In addition to rising stock prices, is there anything else that supports bullishness?

The economy itself continues to muddle along. Job growth also is mediocre. The

(Continued on bottom right on page 12 see REVIEW on top)



This is the daily chart of the Dow Industrials (top) and Transports (bottom).

SCOREBOARD (returns year to date and past weeks to date)

Model	YTD	52-week	26-week	13-week	4-week	1-week
ETF Income Portfolio	-0.4%	2.7%	1.6	-0.8	-0.4	0.1%
ETF Growth Portfolio	6.8%	3.8%	6.6	7.7	2.3	-0.3%
Aggrgt Bond (AGG)	-0.9%	-0.1%	-1.4	-1.6	-0.6	0.3%
S&P 500 TtlRtm	8.4%	15.5%	9.1	10.7	3.2	0.4%
World Growth Index	7.0%	12.7%	9.8	11.0	2.2	-0.1%

CONTENTS

Pages 2-5Income
Page 4Bond Model
Pages 6-11Growth
Page 12Overflow
Page 13Disclaimers

Income Portfolio

ACTION FOR			PORTFOLIO DETAILS			Value as of date:		2/8/2013						
Action Date	Action	Symbol	Action Price	# of Shares	Action Value	Symbol	Stop Loss as of 12/24	Description	Start Price	End Price	# of Shares	Current Value	Percent of Total	
18-Sep	buy	MBB	108.93	125	13,626									
22-Oct	sell	BSV	81.23	404.3	32,831	CSJ	99.10	1-3 yr crdt	105.43	105.56	400.0	42,224.00	37.2%	
22-Oct	buy	TLH	133.89	250	33,483	BSV	76.15	shrt trm	81.01	80.62	372.1	29,999.67	26.5%	
17-Dec	sell	MBB	107.87	125	13,517									
17-Dec	sell	TLH	135.23	250.8	33,906									
17-Dec	buy	CSJ	105.43	400.0	42,182									
21-Jan	sell	LQD	120.67	250	30,158									
	reducing risk by selling 1/2 of LQD													
21-Jan	buy	BSV	81.01	370	29,984									
29-Jan	sell	LQD	119.73	262	31,383									
	stopped out													
						Money Market					1.00	41,143	41,143.00	36.3%
												Total Valuation=	113,366.67	100.0%

WEEKLY REVIEW

2/11 No changes.

2/4 Cautious. Stopped out of LQD.

1/21 Given the whipsawing, the inconclusiveness of the trend in the SLM Bond Model on page 4, I'll reduce exposure to the longer dated corporate bond market by selling half of LQD. I'll buy a different short-term corporate bond fund as noted above.

1/14 No changes.

1/7 No changes. Caution is warranted.

	2010	2011	2012	ytd 2013	Incptn	SD
ETF Income Portfolio	4.8%	3.6	4.8	-0.4	13.4	4.0
Aggregate Bond	2.5%	4.3	0.9	-0.9	6.8	2.6

This shows the returns of previous years, year to date (ytd), and from inception (incptn). It also shows standard deviation (SD).

ETF Income Database and Ranking to 1/31/13

Fund Name	Symbol	Style	12m	9m	6m	3m	1m	V	NAV	Rank
iShares High Yld	HYG	BH	80.66	52.43	45.27	14.62	10.73	6.17	23.43	*****
PS Fdmntl Hi Yield Corp	PHB	BH	30.34	17.84	11.53	11.20	7.47	3.28	37.11	*****
iShares Inter Gov	GVI	BI	19.54	16.72	21.98	11.37	4.58	3.90	41.10	*****
iShares Intrntl Tbond	IGOV	BW	24.18	17.52	27.21	12.07	4.09	5.17	25.71	****
PS DB G10 Currency	DBV	BF	16.57	15.08	19.09	12.07	4.76	3.48	22.03	****
PS Emrg Mrkt Svrgn Debt	PCY	BW	11.09	11.96	19.19	19.13	12.54	4.81	22.89	****
SPDR High Yield	JNK	BH	19.97	23.62	29.47	13.19	3.69	5.14	35.94	****
Wtree Dryfs S Africa Rand	SZR	BF	17.09	16.47	18.67	10.73	4.48	3.54	42.24	****
Currency Euro	FXE	BF	3.42	2.29	10.16	4.68	2.87	2.12	134.72	***
iShares 10-20yr Trsry	TLH	BL	1.08	1.70	-4.15	-2.37	-1.99	1.78	132.17	**
iShares 20+ yr Trsry	TLT	BL	-0.31	1.94	-8.39	-4.29	-3.19	2.89	117.32	**
iShares Inter Bond	MBB	BI	6.99	6.71	13.76	8.14	-0.29	3.86	44.22	**
iShares Long Corp Bond	LQD	BL	6.54	4.45	12.07	11.21	2.26	3.49	9.97	**
iShares Trsry Infltn	TIP	BI	7.22	6.71	12.32	8.41	-1.62	4.14	13.40	**
PS DB Dollar Bullish	UUP	BF	12.80	8.68	13.30	6.43	1.48	2.41	21.25	**
PS Insrdr CA Muni	PWZ	BI	13.14	9.17	14.41	11.96	4.94	3.76	18.90	**
PS Insrdr Natl Muni	PZA	BI	-13.07	-2.24	23.34	14.18	8.70	5.91	6.12	**
PS Insrdr NY Muni	PZT	BI	-7.46	-6.37	16.92	5.90	2.66	4.81	19.67	**
PS Low Duration	PLK	BS	3.31	2.42	5.22	0.87	0.34	2.39	11.66	**
PS Prfd	PGX	BF	20.18	13.70	13.82	8.49	5.98	2.88	24.64	**
PS VRDO Tax Free Wkly	PVI	BS	12.72	6.53	3.58	6.61	3.57	2.92	58.86	**
SPDR Intrntl TBond	BWX	BW	-4.79	-0.42	3.01	-3.37	-0.51	3.58	161.20	**
Vngrd Intrmdt Bond	BND	BI	14.94	6.33	8.95	6.59	4.40	2.73	74.31	**
Vngrd ShrtTrm Bond	BSV	BS	14.71	7.25	4.35	7.32	3.74	3.12	68.26	**
Wtree Dryfs Brazil Real	BZF	BF	1.93	1.29	4.39	2.92	0.38	2.02	21.17	**
Wtree Dryfs Chns Yuan	CYB	BF	13.33	11.30	21.92	1.01	2.63	4.05	22.83	**
Wtree Dryfs Comdty Cur	CCX	BF	-0.05	3.28	8.05	2.60	3.08	2.97	21.74	**
Wtree Dryfs Euro	EU	BF	-9.49	-10.49	-6.76	-2.27	0.00	2.77	21.94	**
Wtree Dryfs Indn Rupee	ICN	BF	7.28	6.07	6.13	3.02	-0.18	2.18	53.19	**
Wtree Dryfs Jpn Yen	JYF	BF	16.55	13.97	17.86	11.04	4.11	3.62	48.38	**
Wtree Emrg Mrkt Lcl Debt	ELD	BF	6.61	3.91	12.32	8.13	-0.21	2.95	57.07	**
iShares 3-7yr Trsry	IEI	BI	0.82	0.84	-0.50	-0.26	-0.39	0.50	122.74	**
iShares 7-10yr Trsry	IEF	BI	1.45	1.68	-2.11	-1.26	-1.29	1.16	106.10	**
iShares Agg Bond	AGG	BI	2.37	2.05	-0.38	-0.60	-0.62	0.52	110.39	**
PS 1-30 Ldr Trsry	PLW	BI	0.64	1.68	-4.17	-2.15	-1.66	1.73	32.00	**
PS Bld America	BAB	BI	0.66	-0.29	4.34	0.96	0.77	1.36	27.42	**
Wtree Dryfs Emrg Crrncy	CEW	BF	-9.75	-3.79	-4.98	-2.61	0.00	1.95	30.93	**
iShares 1-3yr Trsry	SHY	BS	0.21	0.22	0.04	0.09	0.01	0.08	84.43	**
PS DB Dollar Bearish	UDN	BF	0.05	0.00	0.03	0.02	-0.04	0.04	24.98	**

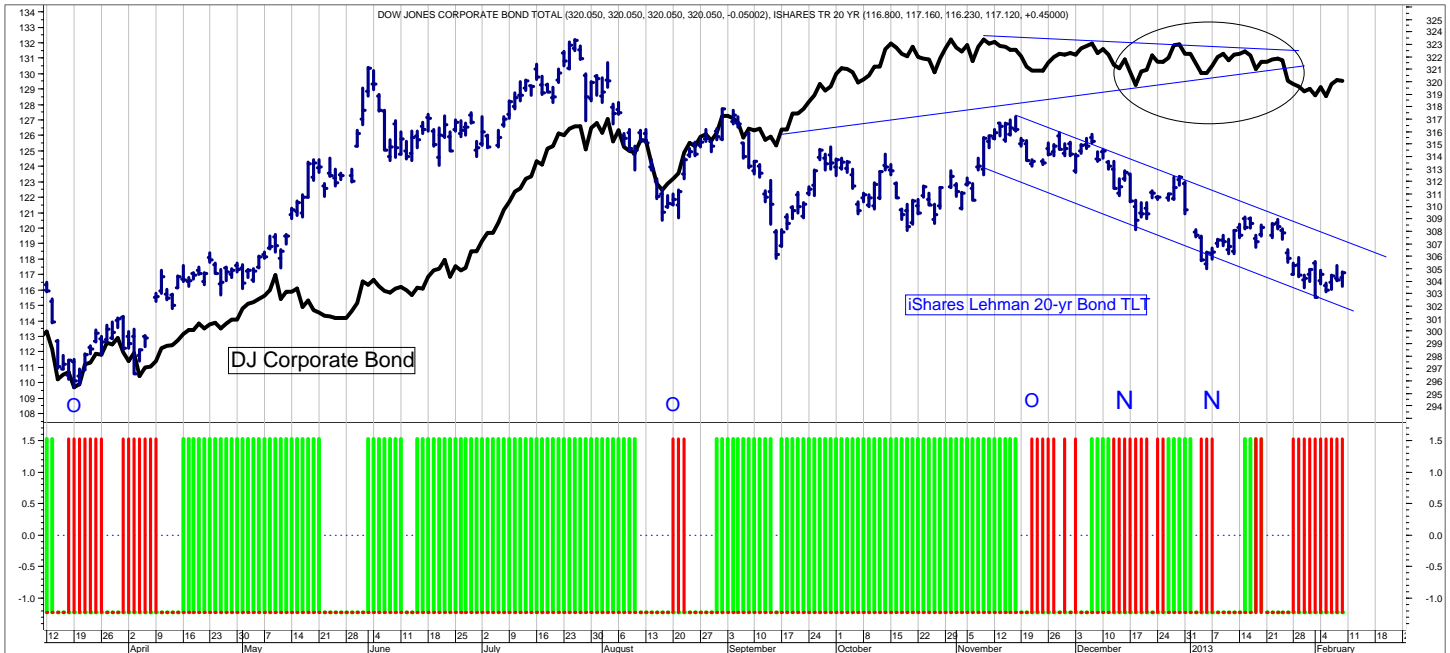
This is the ETF Income Database and Ranking. It shows performance over the last 12, 9, 6, 3, and 1 months through the previous month's end. V is Volatility. NAV is price. CS is Comet Strength (not shown). C is Comet (not shown), which is an ETF's risk-adjusted performance; the higher the better. V, CS, and C are proprietary tools. Rank column shows the number of comets.

ETF LEGEND for pages 3 (Bond), and 7, 8, 9, and 10 (Equity):

Column headings: The first column shows the ETF name, the second column shows its symbol. The third column shows the ETF Style. The first letter is always either B (Bond) or E (Equity) or H (Hybrid). The next letter(s) is the style. So, BS-bond short, BI-bond intermediate, BL-bond long, BF-flexible, BW-world, BH-high yield. And for Equity, EA-equity aggressive, EC-equity contrary, EG-equity gold (precious metals), ESC-small cap, EMC-mid cap, ELC-large cap, EW-world, EGI-growth/income, ERE-real estate, EV-value. Columns 4-8 show percentage returns for the periods shown (12 months, 9, 6, 3, and 1 month). Column 9 is V (volatility); a measure of risk; the lower the V, the less risk. Column 10 is the NAV. Column 11 is the C (comet) ranking. C is the risk-adjusted (V) relative performance (CS). The higher the C indicates the most return for the amount of risk taken.

Generally, our ETF strategy is to own the top ranked ETFs (shown in green) and avoid or short the lower ranked ETFs (shown in red).

SLM Bond Timing Model



The SLM Bond Timing Model is based on the expected direction of the Corporate Bond market. The green bars are bullish (expect higher prices and lower yields) and the red bars are bearish (expect lower prices and higher yields). White spaces indicate that the previous signal is still in effect.

WEEKLY REVIEW

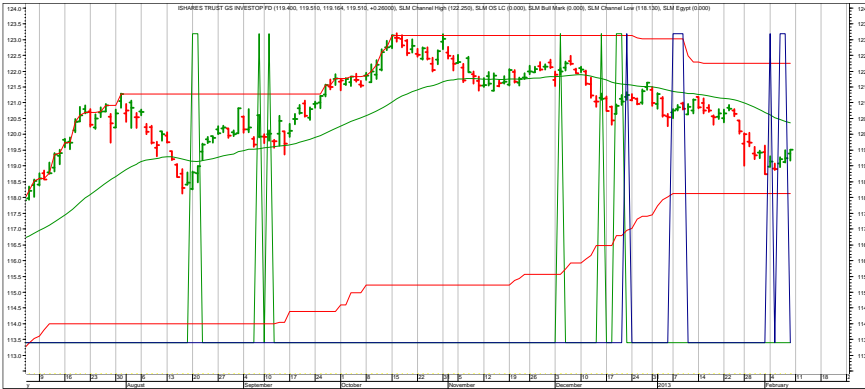
2/11 Intermediate-term trend is down (lower prices and higher yields) for now.

2/4 The whipsawing continues, suggesting a battle between bulls and bears over interest rates. Is the secular bull market in bonds over? Will the economies of the world recover in 2013? Will the Fed continue its policies? We know the answer to the last question is yes. It will do so until inflation pops above the 2% area or unemployment drops below 6.5%. Neither of which are anywhere near happening. So, whipsaws may continue, but at some point, if it pulls back further (prices down and yields up), a good buying area may emerge.

1/28 Again with the whipsawing, but the breakdown through the lower line as shown on the chart above strongly suggests further bond weakness ahead. The economy is coming in stronger than anticipated. The leading indicators from the Conference Board jumped and the previous month's was adjusted from -0.4 to flat. Still, it's hard to anticipate much of a sell off given the Fed's buying proclivity.

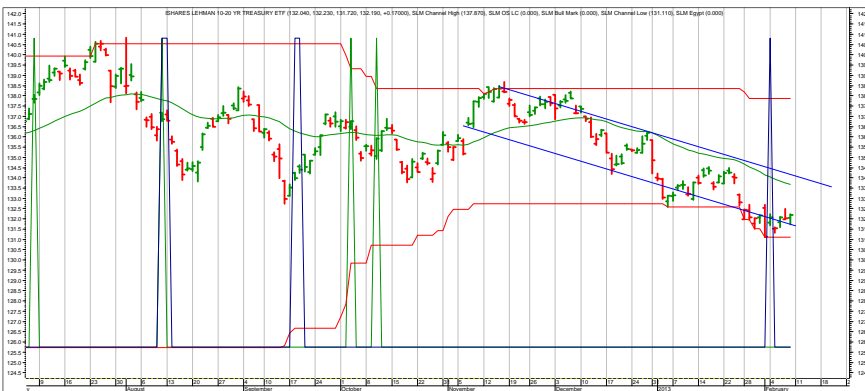
1/21 The whipsawing (short-term buys and sells and buys and sells) continues, so as noted on page 2 I'll reduce some risk by selling the longer-dated ETF and buying a shorter-dated one. The economies of the world seem to be getting stronger, so rates may rise through 2013.

Income Charts



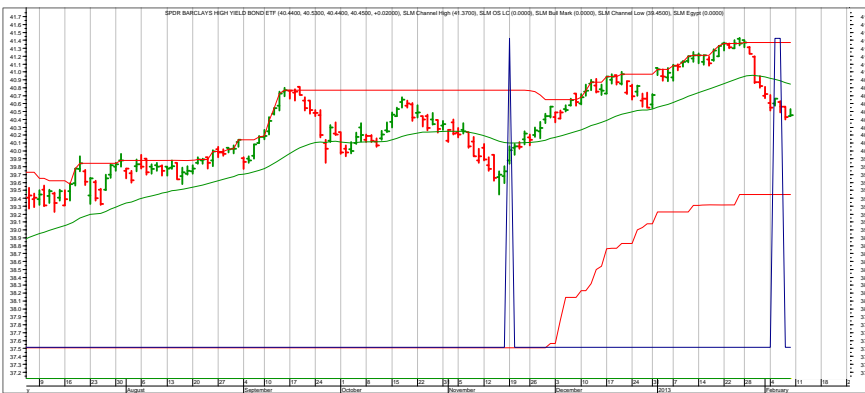
LQD—Investment Grade Corporate

2/11 Buy signals showing up, but I remain cautious.
 2/4 Trend turn down.
 1/28 Is the secular bull market in bonds over?
 1/21 Weakness.
 1/14 No changes.
 1/7 Weakness is apparent.



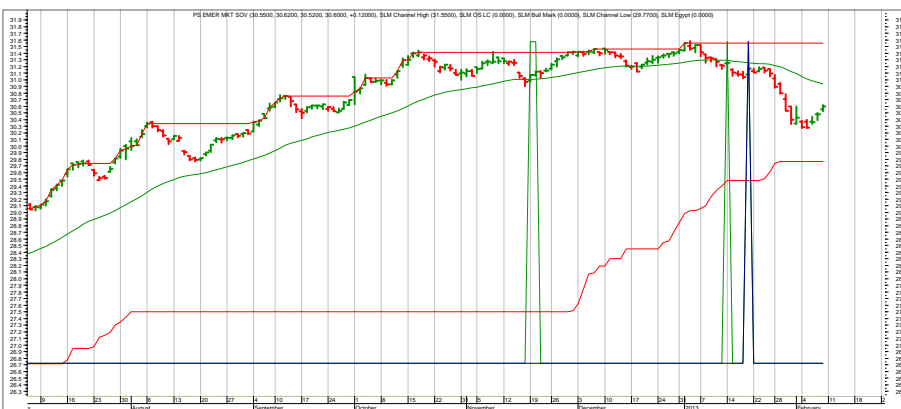
TLH—10-20 year Treasuries

2/11 Could be a bounce trade is due.
 2/4 Nearing the bottom of a down channel.
 1/28 No changes.
 1/21 No changes.
 1/14 No changes.
 1/7 Weakness in dropping to lows.



JNK—hi-yield bonds

2/11 Fairly hard selloff that should lead to a rebound for nimble traders.
 2/4 It was overbought. Will watch for a buy area to emerge.
 1/28 Overbought?
 1/21 Strong rally with the moderate economic risk and zero rate policy.



PCY—International Bonds

2/11 No changes.
 2/4 Watching for a buying area.
 1/28 No changes.
 1/21 Pulling back some.
 1/14 Been a heck of a rally. Will look to capture these better.

Each chart shows daily prices, a moving average (smoothed red line on price portion), and spikes. The spikes show potential buy and sell short signals. Generally speaking, if the moving average is trending down, the spike shows a potential sell short. If the moving average is trending up, the spike shows a potential buy. The charts do not show selling or covering signals.

Top ETF Growth Ranking to 1/31/13 (month end)

<i>Fund Name</i>	<i>Symbol</i>	<i>Style</i>	<i>12m</i>	<i>9m</i>	<i>6m</i>	<i>3m</i>	<i>1m</i>	<i>V</i>	<i>NAV</i>	<i>Rank</i>
Guggnhm Airline	FAA	EA	19.56	25.85	28.47	23.94	7.68	5.44	37.59	*****
Guggnhm China REIT	TAO	EWR	45.44	34.49	31.22	19.18	4.46	6.53	23.87	*****
Guggnhm Spin Off	CSD	EMC	29.76	16.37	18.66	12.17	5.53	2.83	31.28	*****
Guggnhm Timber	CUT	EA	22.39	21.38	30.02	15.98	5.87	4.48	21.64	*****
PS Dynmc Leisure & Enter	PEJ	EA	42.96	32.61	37.23	14.43	7.87	4.85	18.78	*****
PS Dynmc Media	PBS	EA	21.67	19.56	22.24	16.36	11.35	3.94	47.76	*****
PS Dynmc Networking	PXQ	EA	29.26	26.23	29.33	18.50	12.57	5.19	30.36	*****
PS S&P SmlCap Info Tech	PSCT	EA	20.06	18.28	24.47	15.28	7.37	3.49	34.39	*****
SPDR S&P Homebuilders	XHB	EA	56.12	35.21	37.55	11.00	8.35	4.81	28.82	*****
Wtree Eur SC Div	DFE	EW	26.25	19.18	32.52	16.89	5.70	4.95	43.42	*****
Wtree Japan Hedge Eqty	DXJ	EC	24.74	18.40	29.10	26.00	8.05	5.16	39.85	*****
Guggnhm China Sml	HAO	EWR	20.15	14.84	33.79	18.34	3.71	6.00	24.88	****
Guggnhm MidCap Core	CZA	EMC	18.02	11.70	14.13	10.62	7.47	2.32	36.27	****
iShares Germany Indx	EWG	EW	18.53	11.69	17.15	12.03	7.28	2.71	109.10	****
iShares Japan	EWJ	EW	23.72	19.14	21.96	10.43	4.48	4.18	20.29	****
iShares Latin Amr	ILF	EW	12.83	21.76	35.35	14.41	5.58	6.68	14.20	****
iShares Prfrd	PFF	EGI	28.15	20.54	18.76	12.62	4.38	4.39	73.62	****
iShares Russell 1000 Grwth Indx	IRF	ELC	21.16	14.95	17.39	11.55	7.46	2.68	53.99	****
iShares EMU Indx	EZU	EW	20.19	20.56	28.21	13.07	3.77	5.01	34.72	****
PS DB Oil	DBO	EA	17.98	17.31	20.86	10.31	5.62	3.65	22.00	****
PS Dynmc Consmr Staples	PSL	EA	20.37	12.54	16.06	11.87	7.99	3.03	29.21	****
PS Dynmc Energy	PXI	EA	23.79	14.15	15.08	12.79	7.65	3.47	52.51	****
PS Dynmc Food & Bev	PBJ	EA	19.40	14.53	22.58	14.42	6.33	3.78	43.01	****
PS Dynmc Semicndctr	PSI	EA	26.74	11.87	16.73	11.05	7.63	3.31	24.70	****
PS Dynmc Technology	PTF	EA	21.40	14.28	12.95	7.70	6.09	2.45	23.18	****
PS Dynmc Utilities	PUI	EA	25.61	18.08	16.39	7.22	4.31	3.62	17.41	****
PS Hi Yld Eqty Div	PEY	EGI	26.35	20.76	25.36	14.26	7.31	4.75	10.86	****
PS S&P SmlCap Cnsmr Stpl	PSCC	EA	21.59	12.51	17.61	10.79	7.03	3.56	35.30	****
PS S&P SmlCap Utilities	PSCU	EA	19.66	19.94	25.40	14.25	6.95	4.02	34.18	****
PS Water Resources	PHO	EA	22.05	18.67	19.97	13.17	6.36	3.27	22.07	****
PS Zacks Micro Cap	PZI	ESC	18.87	14.04	18.17	12.57	7.35	3.63	12.70	****
Select SPDR Div	SDY	EGI	23.34	11.40	16.28	9.52	5.67	2.99	50.13	****
Select SPDR Indl	XLI	EA	25.91	14.36	19.80	10.00	6.04	4.31	17.38	****
Select SPDR Matrls	XLB	EA	22.37	16.21	12.94	7.78	7.60	2.46	42.91	****
SPDR Mid Cap Trust	MDY	EMC	18.36	11.43	16.89	12.05	7.08	2.69	198.86	****
SPDR S&P Retail	XRT	EA	23.62	10.25	14.85	8.61	7.49	2.88	67.05	****
Vngrd Div Apprctn	VIG	EGI	24.11	12.31	17.92	9.87	6.05	3.00	80.46	****
Vngrd Fincl Srv	VFH	EA	20.21	16.87	22.23	11.46	4.28	3.98	50.93	****
Vngrd Health	VHT	EA	24.33	13.76	17.91	9.54	5.98	3.90	36.14	****
Vngrd Large Cap	VV	ELC	22.95	16.48	13.09	8.53	7.60	2.63	77.12	****
Vngrd Small Cap Value	VBR	ESC	18.40	13.87	16.83	11.12	6.46	2.83	77.34	****
Wtree Intrntl REIT	DRW	ERE	29.23	22.57	17.83	9.93	2.20	4.11	30.63	****
Wtree Intrntl SC Div	DLS	EW	19.73	15.69	25.05	13.93	4.24	3.80	54.34	****
Wtree MidCap Div	DON	EMC	18.57	12.63	14.25	9.23	7.10	2.32	61.34	****
Wtree MidCap Earn	EZM	EMC	17.21	13.16	20.30	13.14	6.85	3.12	66.65	****

This page shows the top ranked ETF Growth Database. It shows performance over the last 12, 9, 6, 3, and 1 months through the previous month's end. V is Volatility. NAV is price. CS is Comet Strength (not shown). C is Comet, which is an ETF's risk-adjusted performance; the higher the better (not shown). This gives us the Rank column (shown).

Generally speaking, we want to own the top-ranked ETFs with 5 and 4 comets. (Comets, not stars, because unlike stars that are fixed, comets come into and out of prominence. We want our thinking, our metaphor aligning with reality.

Middle ETF Growth Ranking to same month end

Fund Name	Symbol	Style	12m	9m	6m	3m	1m	V	NAV	Rank
iShares Brazil Indx	EWZ	EW	-10.84	-2.94	9.25	7.41	1.48	5.04	56.77	***
Alerian MLP	AMPLP	EGI	9.11	7.67	8.41	5.79	8.40	2.34	17.29	***
Guggnhm BRIC	EEB	EW	-5.15	-1.46	10.03	6.95	1.30	4.51	36.49	***
Guggnhm China All	YAO	EWR	13.31	11.30	22.96	11.67	3.33	4.76	26.39	***
Guggnhm Dfnsv Eqty	DEF	EV	14.96	9.44	6.71	5.77	6.51	1.88	30.43	***
Guggnhm Frntr	FRN	EW	4.86	-0.16	9.61	6.45	3.39	3.62	20.43	***
Guggnhm Glbl Div	LVL	EW	6.08	8.67	16.68	7.89	3.50	3.51	13.60	***
Guggnhm Glbl Wtr	CGW	EW	19.68	11.51	14.15	10.72	4.32	2.94	23.20	***
Guggnhm Insdrr Sent	NFO	EMC	18.11	10.92	15.84	10.02	7.80	3.11	37.46	***
Guggnhm Intrntl A Incm	HGI	EW	6.05	5.40	13.31	9.35	3.92	3.46	17.50	***
Guggnhm Multi Ast In	CVY	EV	15.58	11.23	9.84	6.57	6.39	2.31	23.32	***
Guggnhm RJ All	RYJ	ELC	14.74	7.36	13.96	10.85	6.99	2.88	25.11	***
Guggnhm Shipping	SEA	EA	7.21	-1.54	11.82	13.25	7.27	5.48	17.27	***
Guggnhm Solar	TAN	EA	-35.31	-11.51	28.11	33.61	14.58	11.83	17.92	***
iShares DJ Slct Div	DVY	EGI	18.05	15.97	16.74	10.09	3.90	4.16	26.12	***
iShares DJ US Home Constr.	ITB	EA	4.96	4.04	11.27	2.68	1.65	2.99	28.87	***
iShares EAFE Indx	EFA	EW	9.71	12.32	21.49	12.97	2.52	4.98	41.47	***
iShares Emrg Mrkt Stk	EEM	EW	11.95	5.00	2.10	6.03	2.88	3.12	80.80	***
iShares Europe 350	IEV	EW	16.61	9.05	9.98	7.03	5.11	2.63	150.46	***
iShares Gold	IAU	EG	16.03	9.09	6.85	4.97	5.05	1.78	60.13	***
iShares Hong Kong Indx	EAH	EW	17.08	13.57	19.24	11.27	3.73	3.55	58.98	***
iShares Malaysia Indx	EWM	EW	0.56	2.14	9.50	8.72	3.76	3.93	45.49	***
iShares Russel MidVal	IWS	EMC	15.35	8.37	4.93	6.41	4.02	2.90	67.27	***
iShares Russell 1000 Value Indx	IWD	ELC	13.25	4.84	7.85	6.08	4.23	2.56	68.26	***
iShares Russell 2000	IWM	ESC	20.34	13.71	14.02	8.65	6.37	2.70	77.46	***
iShares Russell 2000 Value Indx	IWN	ESC	15.71	11.89	15.77	10.69	6.24	3.15	89.58	***
iShares S&P 100 Indx	VOX	ELC	17.21	13.79	16.86	11.00	5.96	3.05	80.01	***
iShares Silver	SILV	EG	16.23	8.15	7.47	5.12	4.58	2.60	67.65	***
iShares Singapore	EWS	EW	-5.70	1.10	12.24	-2.65	3.64	7.53	30.44	***
iShares Slct Div	IDV	ELC	15.96	10.43	7.46	5.85	0.58	4.13	13.77	***
iShares South Korea Indx	EWY	EW	17.83	14.75	16.79	8.33	3.77	3.70	34.94	***
iShares Spain	EWP	EW	4.46	1.15	7.79	4.06	-5.97	4.30	59.57	***
iShares Taiwan Indx	EWT	EW	7.00	27.14	40.38	13.36	3.73	7.25	31.39	***
Market Vectors Oil Services	OIH	EA	6.49	7.93	12.70	14.31	12.87	5.15	43.60	***
Market Vectors Russia	RSX	EW	4.44	5.52	19.48	13.47	3.08	6.88	30.82	***
Market Vectors Semiconductor	SMH	EA	4.45	1.22	8.59	12.61	6.09	3.87	34.30	***
PS BLDR Dvlpd Mrkt 100 ADR	ADR	EW	8.39	7.34	6.61	4.68	1.80	2.06	26.62	***
PS DB Energy	DBE	EA	10.87	8.94	16.68	13.25	3.17	3.85	27.01	***
PS DB Gold	DGL	EG	-1.32	1.73	9.42	6.04	1.44	3.84	40.80	***
PS DB Precious Metals	DBP	EG	15.77	8.15	11.39	6.88	5.57	2.36	31.46	***
PS DB Silver	DBS	EG	6.91	7.91	20.24	14.59	6.01	3.80	24.51	***
PS DWA Dvlpd Mrkt T Ldrs	PIZ	ELC	-6.98	-3.52	8.78	8.72	0.88	4.43	19.45	***
PS DWA Tech Ldr	PDP	ELC	3.72	-1.97	10.60	7.17	4.90	4.07	29.31	***
PS Dyn Mrkt	PWC	ELC	-4.32	-9.08	9.84	10.91	5.82	4.82	27.45	***
PS Dynmc Banking	PJB	EA	-6.20	0.37	12.52	-2.68	3.38	7.72	54.12	***
PS Dynmc Basic Matrl	PYZ	EA	16.00	10.70	7.36	6.09	6.06	1.98	17.14	***
PS Dynmc Biotech	PBE	EA	15.64	10.32	18.25	7.94	3.87	3.55	20.92	***
PS Dynmc Bldg Cnstrctn	PKB	EA	10.66	5.12	11.99	7.44	0.91	3.00	18.76	***
PS Dynmc Consmr Discr	PEZ	EA	17.82	5.82	11.14	7.34	4.73	2.42	29.24	***
PS Dynmc Energy Explor	PXE	EA	7.31	0.39	5.85	8.92	5.65	3.44	50.82	***
PS Dynmc Fncl	PFI	EA	13.45	6.39	6.33	3.30	4.51	3.32	13.91	***
PS Dynmc Healthcare	PTH	EA	13.29	11.56	8.39	11.36	8.58	4.25	24.80	***
PS Dynmc Lrg Cap Grth	PWB	ELC	18.57	6.24	12.06	7.49	5.38	3.07	31.34	***
PS Dynmc Lrg Cap Value	PWV	ELC	15.42	10.04	8.27	7.02	5.72	2.19	35.12	***
PS Dynmc Oil & Gas Svcs	PXJ	EA	20.74	12.78	15.64	7.56	5.44	2.92	22.30	***
PS Dynmc Pharma	PJP	EA	11.66	8.55	8.05	8.02	6.18	1.79	21.14	***
PS Dynmc Retail	PMR	EA	20.90	10.71	13.78	9.23	8.07	3.32	35.47	***
PS Dynmc Software	PSJ	EA	19.34	6.87	9.84	7.47	4.60	2.59	19.80	***
PS Emrg Mrkt Infrastrctr	PXR	EW	-1.82	-5.12	11.94	13.88	3.47	4.94	26.21	***
PS Fincl Pfd	PGF	EGI	16.54	3.36	9.08	5.32	4.00	2.61	26.23	***
PS FTSE RAFI Asia Pac xJpn	PAF	EW	-1.26	-3.46	2.73	11.76	4.44	3.69	15.04	***
PS FTSE RAFI Dvlp Mrkt xUSA	PXF	EW	15.83	6.10	9.56	5.47	5.12	3.43	28.53	***
PS FTSE RAFI Dvlp Mrkt xUSA Sml	PDN	EW	9.96	1.87	7.75	10.05	5.50	3.97	27.61	***

This shows the ETF Growth Database and Ranking. It shows performance over the last 12, 9, 6, 3, and 1 months through the previous month's end. V is Volatility. NAV is price. Rank shows the number of comets from 5 to 1. The larger the better.

Middle ETF Growth Ranking to same month end

Fund Name	Symbol	Style	12m	9m	6m	3m	1m	V	NAV	Rank
PS FTSE RAFI Emrg Mrkt	PXH	EW	13.86	10.41	4.67	2.63	3.81	1.94	17.97	***
PS FTSE RAFI US 1500 Sml-Mid	PRFZ	EMC	5.89	5.40	18.19	10.52	1.43	4.66	43.83	***
PS Gbl Clean Enrgy	PBD	EW	16.33	14.15	15.24	9.13	1.03	4.00	57.76	***
PS Gbl Coal	PKOL	EA	13.99	13.47	22.06	11.73	4.25	4.32	38.00	***
PS Gbl Gold Precious Mtls	PSAU	EG	12.72	11.20	19.00	10.22	3.32	3.70	24.28	***
PS Gbl Listd Prvt Eqty	PSP	EW	3.29	4.96	13.93	8.78	0.13	4.23	22.85	***
PS Gbl Nuclr Enrgy	PKN	EW	16.65	12.29	18.09	11.83	6.30	3.36	73.92	***
PS Gbl Steel	PSTL	EA	12.50	10.26	11.21	9.62	5.30	3.59	32.36	***
PS Gbl Water	PIO	EW	-5.20	2.69	21.73	14.72	6.59	6.28	8.41	***
PS Ibtstn Altrntv	PTO	ELC	0.49	3.72	9.30	7.47	6.14	4.26	16.77	***
PS India	PIN	EW	-12.20	-5.05	15.41	13.52	0.82	6.02	14.69	***
PS Intrntl Dvdnd	PID	EW	13.28	10.61	9.26	5.30	6.49	1.70	9.99	***
PS Lux Nanotech	PXN	EA	2.50	11.07	19.42	10.34	6.75	6.96	19.60	***
PS Mega Cap	PMA	ELC	14.53	10.38	13.88	8.73	4.55	2.60	16.55	***
PS MENA Frntr Countries	PMNA	EW	0.06	2.11	5.59	9.89	7.38	3.61	6.40	***
PS Mrngstr Stk	PYH	ELC	12.51	5.99	7.89	4.26	4.99	3.03	30.28	***
PS QQQ	QQQ	ELC	21.33	9.28	15.67	13.59	8.25	4.15	44.88	***
PS RvrFrnt Tac Bal	PAO	EGI	11.85	1.24	4.07	3.53	2.67	3.46	66.87	***
PS RvrFrnt Tac G&I	PCA	EGI	12.65	7.88	10.56	9.42	4.05	2.50	13.09	***
PS S&P SmlCap Cnsmr Dis	PSCD	EA	16.06	9.64	4.78	3.92	4.86	1.77	28.95	***
PS S&P SmlCap Energy	PSCE	EA	14.65	7.56	6.60	7.08	5.49	2.71	36.33	***
PS S&P SmlCap Fincl	PSCF	EA	-1.74	-2.38	11.81	9.21	5.02	4.30	35.33	***
PS S&P SmlCap Hlth Care	PSCH	EA	17.88	11.33	11.37	9.25	5.60	2.75	32.62	***
PS S&P SmlCap Indstrils	PSCI	EA	15.38	8.86	9.05	10.32	6.45	3.69	37.63	***
PS S&P SmlCap Mtrls	PSCM	EA	7.37	6.02	12.46	10.72	5.60	2.94	32.41	***
PS US REIT	PSR	ERE	5.50	9.12	2.19	2.75	5.14	2.30	31.08	***
PS WilderHill Cln Enrgy	PBW	EA	-20.09	-9.76	11.98	12.98	8.82	6.81	4.44	***
PS WilderHill Prgsv Enrgy	PUW	EA	10.60	6.58	16.33	12.64	6.92	4.03	27.35	***
Select SPDR Enrgy	XLE	EA	18.67	10.62	5.39	5.36	5.64	2.29	36.87	***
Select SPDR Financls	XLF	EA	16.70	12.14	11.61	7.90	6.43	1.87	61.90	***
Select SPDR Health	XLV	EA	11.42	10.14	12.13	8.07	8.30	3.68	77.35	***
Select SPDR Technlgy	XLK	EA	13.25	10.32	13.48	10.65	5.75	2.47	40.08	***
Select SPDR Utilities	XLU	EA	7.42	8.50	13.59	9.26	3.94	3.09	39.02	***
SPDR DJ Gbl Titans	DGT	EW	10.63	-0.05	1.48	2.42	1.91	3.16	29.40	***
SPDR Euro Stoxx 50	FEZ	EW	13.04	11.41	16.46	10.52	5.04	3.21	59.01	***
SPDR Gold	GLD	EG	12.60	7.10	8.11	6.70	6.11	2.36	138.41	***
SPDR S&P 500	SPY	ELC	16.53	8.93	10.07	6.66	5.12	2.60	149.70	***
SPDR S&P Bank	KBE	EA	23.27	11.60	18.85	8.67	6.92	3.99	25.48	***
SPDR S&P Oil & Gas Expl. & Prod.	XOP	EA	7.72	4.11	14.30	8.68	7.43	4.63	58.10	***
SPDR S&P Regional Banking	KRE	EA	17.91	8.06	12.22	7.63	6.65	3.45	29.83	***
SPDR Wish REIT	RWR	ERE	13.66	6.00	3.37	6.75	3.43	3.13	75.47	***
US Natural Gas	UNG	EA	-10.67	14.32	-14.88	-13.71	-0.74	10.17	18.76	***
US Oil Fund	USO	EA	-6.72	-11.09	7.96	11.01	5.72	5.31	35.28	***
Vngrd Emrg Mrkt	VWO	EW	18.81	10.76	5.96	5.70	5.88	2.21	93.08	***
Vngrd Europe Pacific	VEA	EW	15.27	10.25	10.66	7.96	5.93	2.14	63.10	***
Vngrd European Indx	VGK	EW	7.67	7.09	13.92	8.47	0.07	3.81	44.56	***
Vngrd Extnd 4500	VXF	ELC	16.56	13.47	19.09	11.16	3.83	3.57	36.58	***
Vngrd Grth	VUG	ELC	17.76	11.61	17.23	11.80	6.79	3.02	64.61	***
Vngrd Materials	VAW	EA	16.66	8.99	10.57	7.08	5.29	2.62	68.61	***
Vngrd MidCap Val	VO	EMC	8.95	9.42	15.37	9.16	3.94	3.16	87.53	***
Vngrd REIT	VNQ	ERE	16.11	9.90	15.36	11.05	6.57	2.74	87.86	***
Vngrd Small Cap	VB	ESC	17.63	12.46	16.40	10.93	6.35	3.00	86.04	***
Vngrd Small Cap Grth	VBK	ESC	16.58	10.86	15.47	10.78	6.10	3.23	94.46	***
Vngrd Tech	VGX	EA	7.93	-1.67	3.46	4.16	2.21	3.53	70.64	***
Vngrd TTL Intrntl Stk	VXUS	EW	13.16	11.13	17.24	9.61	2.40	3.53	48.20	***
Vngrd TTL Stock	VTI	ELC	16.84	9.47	11.22	7.60	5.42	2.66	77.25	***
Wtree Emrg Mrkt Eincl	DEM	EW	15.68	11.25	8.85	6.15	5.53	2.20	58.51	***
Wtree Emrg Mrkt SC Div	DGS	EW	13.48	8.64	17.27	10.15	1.25	3.35	50.06	***
Wtree Eqty Income	DHS	EGI	17.46	10.55	5.05	4.62	5.82	2.18	48.31	***
Wtree Gbl Eqty Incm	DEW	EW	15.81	12.49	13.49	7.13	3.44	2.74	44.76	***
Wtree India	EPI	EWR	6.05	11.14	22.16	11.50	4.28	8.00	20.20	***
Wtree Intrntl Div Ex Fincl	DOO	EW	12.04	11.28	15.10	8.05	3.13	3.12	43.21	***
Wtree Intrntl LC Div	DOL	EW	16.26	14.39	17.24	10.07	3.96	3.45	46.71	***
Wtree Intrntl MC Div	DIM	EW	17.72	14.51	20.94	12.07	3.68	3.87	52.14	***
Wtree Intrntl Utilities	DBU	EW	5.59	4.32	12.96	5.91	0.87	3.03	18.56	***
Wtree Japan SC Div	DFJ	EWR	3.69	2.26	7.87	6.38	1.26	2.64	44.25	***
Wtree LrgCap Div	DLN	ELC	15.44	8.89	6.96	5.26	4.94	2.21	56.17	***
Wtree Middle East Div	GULF	EW	14.68	9.49	16.67	10.43	7.40	2.42	16.10	***
Wtree S&P 500	EPS	ELC	15.71	8.78	10.43	7.09	5.65	2.85	52.15	***
Wtree Sml Cap Div	DES	ESC	17.68	14.86	15.33	9.25	5.81	2.74	53.74	***
Wtree Ttl Earn	EXT	ELC	15.67	9.13	10.78	7.34	6.33	2.76	53.58	***
Wtree World Ex US Grth	DNL	EW	10.80	8.31	15.50	9.47	0.87	3.65	53.40	***

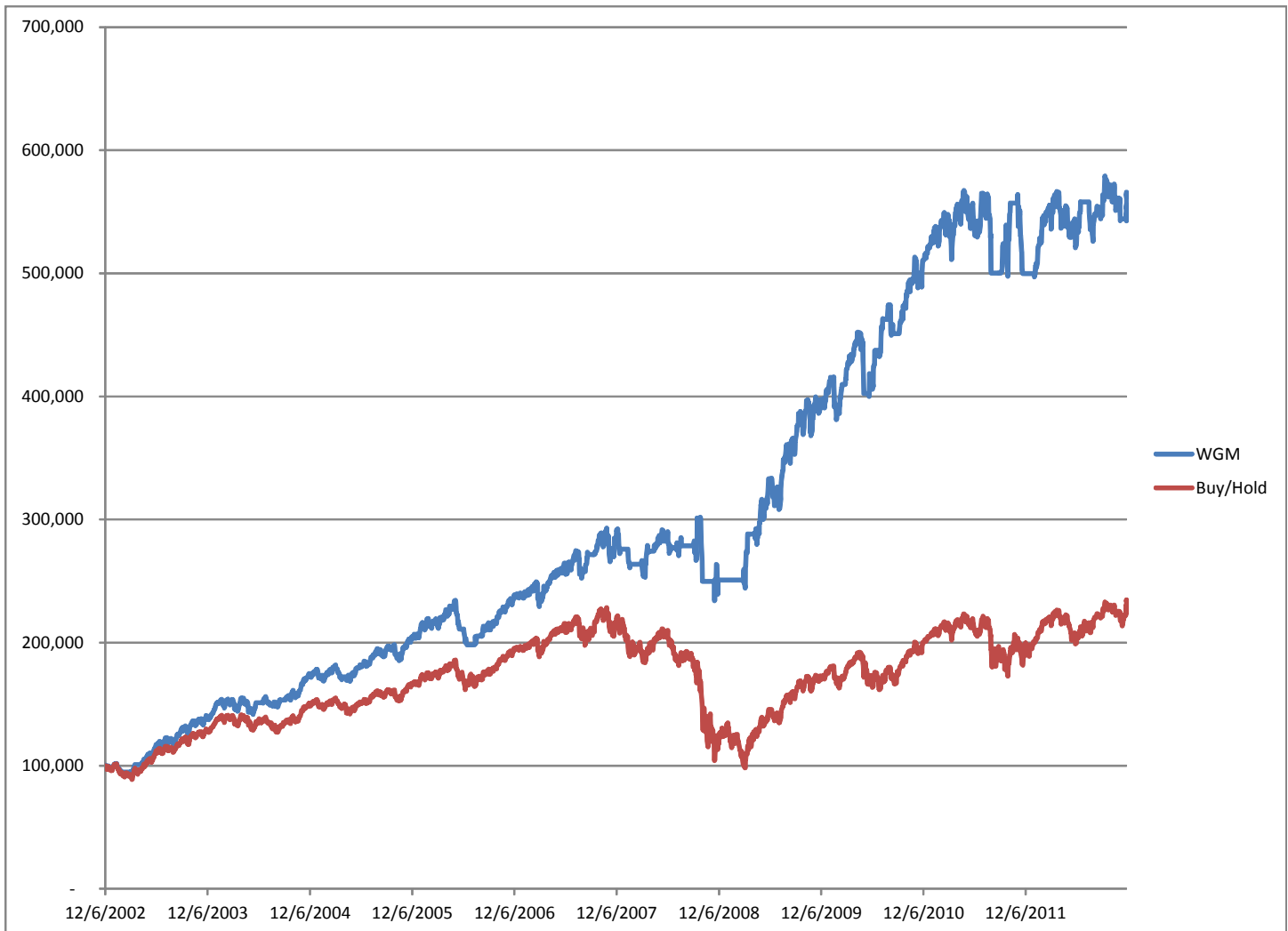
This shows the ETF Growth Database and Ranking. It shows performance over the last 12, 9, 6, 3, and 1 months through the previous month's end. V is Volatility. NAV is price. Rank shows the number of comets from 5 to 1. The larger the better.

Bottom ETF Growth Ranking to same month end

Fund Name	Symbol	Style	12m	9m	6m	3m	1m	V	NAV	Rank
Guggnm Candn Enrg Incm	ENY	EWR	-9.15	-7.66	0.97	-3.93	0.39	3.71	15.58	**
iPath S&P 500 VIX Shrt Trm	VXX	EC	-77.35	-63.23	-55.39	-34.23	-23.48	15.96	24.34	**
iShares Australia	EWA	EW	10.43	7.97	5.52	2.81	0.34	1.79	93.67	**
iShares Cohen&Str REIT	ICF	ERE	6.81	3.82	5.31	-0.11	0.16	1.68	103.09	**
iShares Core S&P 500	IVV	ELC	6.85	5.51	0.32	-2.03	-1.30	1.51	119.42	**
iShares Italy Indx	EWI	EW	-4.59	-0.18	3.05	-3.34	-0.49	3.60	16.20	**
iShares Mexico	EWV	EW	4.11	1.25	1.33	-2.52	-4.49	2.39	14.45	**
iShares REIT	IYR	ERE	11.87	8.13	5.24	1.91	1.34	1.60	40.15	**
Market Vectors Gold Minors	GDX	EG	-25.53	-9.37	-1.84	-20.52	-10.28	7.02	41.62	**
Market Vectors Junior Gold Minors	GDXJ	EG	-33.80	-15.76	2.13	-18.69	-4.50	8.38	18.90	**
PS Aerospace & Def	PPA	EA	7.37	5.83	0.56	0.79	-0.27	1.26	30.04	**
PS BLDR Emrg Mkt 50 ADR	ADRE	EW	16.48	10.59	3.82	-1.17	-2.97	2.03	30.40	**
PS BLDR Europe 100 ADR	ADRU	EW	9.36	6.62	4.59	1.60	0.40	1.27	19.25	**
PS Buyback Achievers	PKW	EGI	6.23	4.91	1.87	1.00	0.66	1.08	25.35	**
PS Cleantech	PZD	EA	6.57	5.82	2.06	0.88	0.36	1.26	25.76	**
PS DB Agriculture	DBA	EA	4.77	4.60	1.09	0.38	0.98	1.19	24.73	**
PS DB Commodity	DBC	EA	10.93	8.04	3.64	1.27	1.28	1.25	14.79	**
PS Dividend Achievers	PFM	EGI	-3.76	2.27	-7.37	-3.53	-0.14	2.80	27.91	**
PS DWA Emrg Mrkt T Ldrs	PIE	EW	2.30	0.21	4.48	3.30	2.48	3.33	28.47	**
PS Dyn MagniQuant	PIQ	ELC	-5.99	-1.25	2.43	-3.72	-0.66	3.62	56.97	**
PS Dyn OTC	PWO	ESC	-5.97	-0.85	4.23	-3.49	0.14	4.04	57.17	**
PS Gbl Agriculture	PAGG	EA	13.30	8.46	4.11	1.38	1.34	1.77	18.43	**
PS Gbl Wind Energy	PWND	EW	-22.65	-15.38	9.34	1.74	1.87	5.75	20.13	**
PS Gldn Drgn USX China	PGJ	EW	-22.99	-8.06	1.47	-18.26	-8.87	6.84	33.79	**
PS NASDAQ Intrnt	PNQI	EA	3.56	-2.20	5.01	2.93	0.46	2.38	10.88	**
PS S&P 500 BuyWrite	PBP	ELC	10.46	7.28	6.43	3.63	2.19	1.73	13.53	**
PS S&P 500 LowVolatility Portfolio	SPLV	ELC	4.68	0.80	0.57	-0.20	2.09	1.76	20.06	**
Select SPDR Cnsmr Disc	XLY	EA	10.82	8.19	5.81	2.85	0.27	1.88	40.82	**
SPDR DJ Industrials	DIA	ELC	9.81	5.81	-1.41	0.26	4.75	2.31	36.58	**
SPDR S&P Metals & Mining	XME	EA	-17.96	-8.40	11.09	-0.95	-2.79	5.76	43.87	**
Vngrd Utilities	VPU	EA	11.12	7.14	0.21	1.32	5.19	2.26	79.21	**
Wtree DEFA	DWM	EW	-6.71	0.31	5.95	3.43	3.60	3.10	19.59	**
Wtree Div Ex Fincl	DTN	ELC	1.74	1.64	4.19	2.37	0.74	2.08	21.64	**
Wtree LrgCap Grth	ROI	ELC	4.42	-1.06	2.04	0.51	0.00	2.63	39.65	**
iShares Canada	EWC	EW	1.52	0.84	-0.36	-0.48	-0.18	0.27	107.80	*
iShares China	FXI	EW	1.99	1.76	0.22	-0.27	-0.26	0.45	112.12	*
iShares Core S&P Mid Cap	IJH	EMC	3.47	3.14	0.10	-0.79	-0.52	0.92	120.78	*
PS BLDR Asia 50 ADR	ADRA	EW	-2.26	-0.87	-4.80	-1.23	-0.87	1.40	21.62	*
PS DB Base Metals	DBB	EG	0.59	0.55	0.43	0.20	0.34	0.20	25.33	*
Pro Shares Short Russell 2000	RWM	ESC	-17.52	-13.54	-15.18	-10.77	-6.29	3.35	22.79	*
Pro Shares Short S&P 500	SH	EC	-16.36	-10.03	-10.05	-6.91	-5.05	2.69	32.31	*
Select SPDR Cnsmr Stpl	XLP	EA	2.07	1.49	2.15	-0.63	-0.93	1.22	60.44	*
Vngrd Cnsmr Dis	VCR	EA	2.61	1.88	-0.36	-0.60	-0.69	0.50	83.45	*
Vngrd Cnsmr Stpls	VDC	EA	1.47	1.11	0.42	0.13	-0.02	0.19	80.97	*
Wtree DEFA Eqty Incm	DTH	EW	1.69	1.85	2.62	0.90	0.39	0.42	25.63	*

This shows the ETF Growth Database and Ranking. It shows performance over the last 12, 9, 6, 3, and 1 months through the previous month's end. V is Volatility. NAV is price. Rank shows the number of comets from 5 to 1. The larger the better.

World Growth Model vs. World Growth Index (buy hold)



The chart above compares the past ten years of the backtested World Growth Model with a buy/hold of the same five underlying indexes (EEM, EFA, IWM, QQQ, SPY), which is the fully invested always World Growth Index. Dividends are reinvested. No commissions included to buy/sell. Past performance does not guarantee future performance.

The five ETF indexes are static; that is, they were the only ETFs used over the period. So, the selecting model was static. No attempt was made to buy the top-ranked by C (risk-adjusted relative performance) ETFs. Presumably, if the top ETFs had been picked, the performance would be greater.

What was used for this Model was a newish timing model that combines a number of features, including two timing models with two stop orientations. The clearest use of stops is shown in the 2008 bear market. While the bear erased all of the gains of the buy/hold index from 12/6/2002, the WG Model was stopped out back to cash, thus preventing further losses.

I've begun to implement this Model in this Newsletter based on these results as of 12/10/12.

As mentioned, the next step is to incorporate the selecting model (buy the top ETFs by C) with the timing model.

Overflow from Page 1, Definitions, and Newsletter Updates

(Continued from page 1) **REVIEW**

strong spot is now housing. The continued strong support remains the Fed's easy money policy. This will continue for at least another 1-2 years. But there is nothing really new here in this news.

The increase in stock prices seems simply to be a function of the fact that they are increasing, but that's not without an underlying reason; to wit, cash is paying nothing, so out the risk plank into stocks we walk.

It's not a real great reason to buy. And the excessive bullishness will give rise to a correction of up to 15% (more likely 3-5%). So, waiting for that seems reasonable, rather than chase the market higher.

Lastly as a follow up to the short-term trade mentioned last week that there was the very minor negative divergence between the Industrials and Transports. If they were to close below certain levels, aggressive traders could jump out of the market. Two

things. The market didn't close below those levels and in fact both indexes moved a bit higher, thus negating the divergence.

Please see the individual portfolio pages for any changes.

Just to clarify a couple of terms that I use regularly.

Short-term is days to weeks.

Intermediate-term is weeks to months.

Long-term is months to years.

Cyclical is 1-5 years.

Secular is 5 years to decades.

Bull market is a series of higher highs and higher lows.

Bear market is a series of lower lows and lower highs.

Neutral market is sideways without a discernible pattern.

Oddly, bull and bear markets may occur simultaneously, but only over different time periods. For example, we may be in a secular bear market, but there are cyclical bull and bear markets within that.

Closing stops are "mental". I look at the position at quarter to the close. If it is trading below the stop (or above if short), then I act with the assumption the security will trigger that closing stop on that day. I sell (or cover) at the close that day.

New portfolio stops are being implemented. These are internal and will be emailed if triggered.

2/11 No changes.

2/4 The ETF selection tables on pages 3 and 7-10 are updated through 1/31/13.

Work continues on the new model that combines the top ETFs with the newish timing model.

1/28 The ETF selections tables on pages 3 (income) and 7-10 (equity) have been updated through 12/31/12.

The next step is to integrate the top selections into the newish timing model that is now used in the World Growth Model (static five ETFs).

1/21 35 new ETFs were added to the database. More additions are planned.

The updated selections have been delayed pending those additions and a slight reworking of the selecting model.

Descriptions & Disclosures

PORTFOLIO DESCRIPTIONS (pages 2 and 6)

Our guiding goal is to provide the most return with the least risk consistently over time through bull and bear markets.

Income Portfolio, page 2: Uses a proprietary selection methodology on all of the monitored bond-oriented ETFs to pick the top ETFs. I then use a proprietary timing model to decide whether to buy, sell, hold, or avoid. From time to time, timing considerations may take precedence over selections; in other words, we may own lower ranked funds because of anticipated timing changes.

Growth Portfolio, page 6: As of 12/10/12, it is based on the World Growth Index, which is made up of a static fully invested 20% in each of five ETFs (EEM, EFA, IWM, QQQ, SPY). The Portfolio will buy and sell the WGI based on proprietary timing signals.

Both portfolios were started on 1/1/10 with \$100,000. However, the Growth Portfolio strategy was changed on 12/10/12 to the World Growth Model.

Portfolio changes will usually be made at the close on Monday, unless otherwise noted in any emailed hotline update or triggered stop orders. Issues are normally posted on Mondays by 1:35pm cst (Tuesday if Monday is a holiday).

Portfolios are updated through the Friday close the week before.

Dividends are reinvested in additional shares.

Commissions of \$10 per trade are applied. Interest is zero for the money market (cash) position.

SUBSCRIPTIONS: To receive *ETF Selections & Timing*, you may subscribe in one of three ways. You may subscribe on the web site InvestmentST.com using PayPal or call 1-800-800-6563 for Amex, Visa, MasterCard, or Discover orders or send a check to the address on the front page. Subscriptions may be tax deductible.

The recurring monthly subscription is \$24.00. An annual subscription is \$240.00. Subscribers receive this weekly eNewsletter. There is no mailed issue. Subscribers retrieve the current weekly issue at the web site InvestmentST.com by logging in with a user name and password.

Unless otherwise noted, the weekly eNewsletter is posted by 1:35 PM central time each Monday, except for holidays and then on Tuesday. It may contain actionable, specific buy or sell advice to take that day at the Monday close in each portfolio. We may also use stop orders. For stops, check the ETF at quarter to the close. If it is below (or above) a stop level, assume it will close there and act on that. Portfolio data will be updated through the previous Friday's close. Fund symbols, rather than names, are the official identification used for activity.

GUARANTEE: Subscriptions may be cancelled at any time. Annual subscriptions are refundable for the weekly term remaining with a four-week minimum charge, using a 52-week count. Monthly subscriptions just expire.

PUBLISHER: Watercourse Way Holdings, LLC publishes this newsletter.

REPRINTS: This eNewsletter is intended for subscribers only, reprints are not permitted.

DISCLAIMER: The information contained herein is assembled from sources who are believed reliable, but the accuracy of data or advice cannot be guaranteed. Past performance does not guarantee future performance. Portfolio values include a commission of \$10/trade, dividend reinvestment, and short-term redemption charges. The World Growth Index and DJ Aggregate Bond Index are equity and bond indexes and may or may not be useful in comparing returns. Security values fluctuate. Information is provided without consideration for a subscriber's personal situation. Watercourse Way Holdings, LLC its members and associates may or may not invest identically to or at the same time as portfolios or advice shown herein.

COPYRIGHT: Copyright, 2009-13, Watercourse Way Holdings, LLC. All rights reserved.